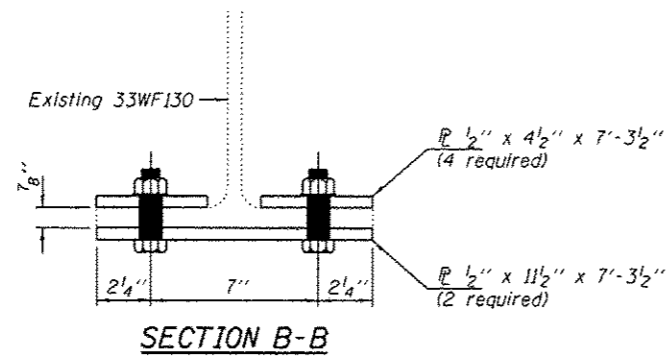
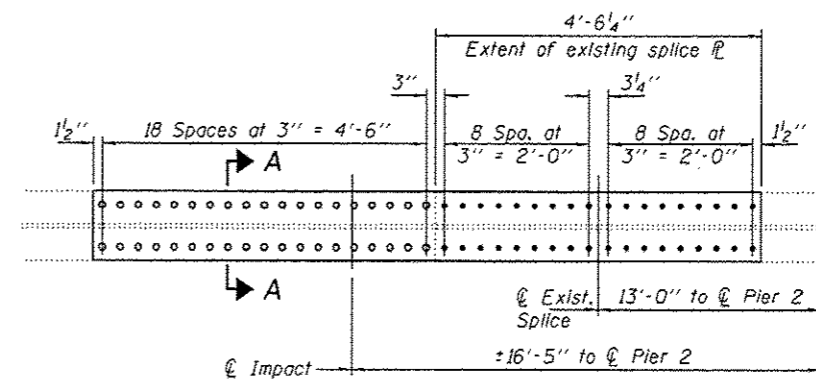


STRENGTHENING DETAIL BEAMS 10 & 13



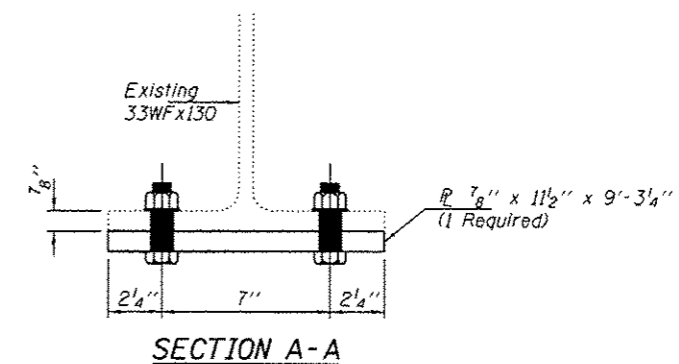
SECTION B-B

- - Use holes in existing plates as template for drilling holes in new plate.
- - Use holes in new plate as template for drilling holes in existing beam flange.



STRENGTHENING DETAIL BEAM 1

Existing Splice to be removed and replaced as shown in detail.



SECTION A-A

| Item | Unit | Quantity |
|-------|------|----------|
| Q | (k) | 95.6 |
| L | (k) | 44.5 |
| Imp. | (k) | 12.6 |
| Total | (k) | 152.7 |

BILL OF MATERIAL

| ITEM | UNIT | QUANTITY |
|--------------------------------|-------|----------|
| Structural Steel Repair | Pound | 950 |
| Temporary Shoring and Cribbing | L.S. | 1 |