

F.A.P. RTE.	SECTION	COUNTY	TOTAL SHEETS	SHEET NO.
VAR.	2013-036TS	COOK	76	01
FED. ROAD DIST. NO.	ILLINOIS	CONTRACT NO. 60W82		

D-91-381-13

**STATE OF ILLINOIS**  
**DEPARTMENT OF TRANSPORTATION**  
**DIVISION OF HIGHWAYS**  
**PROPOSED**  
**HIGHWAY PLANS**

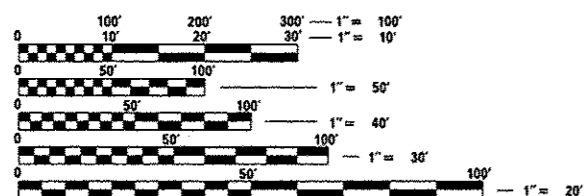
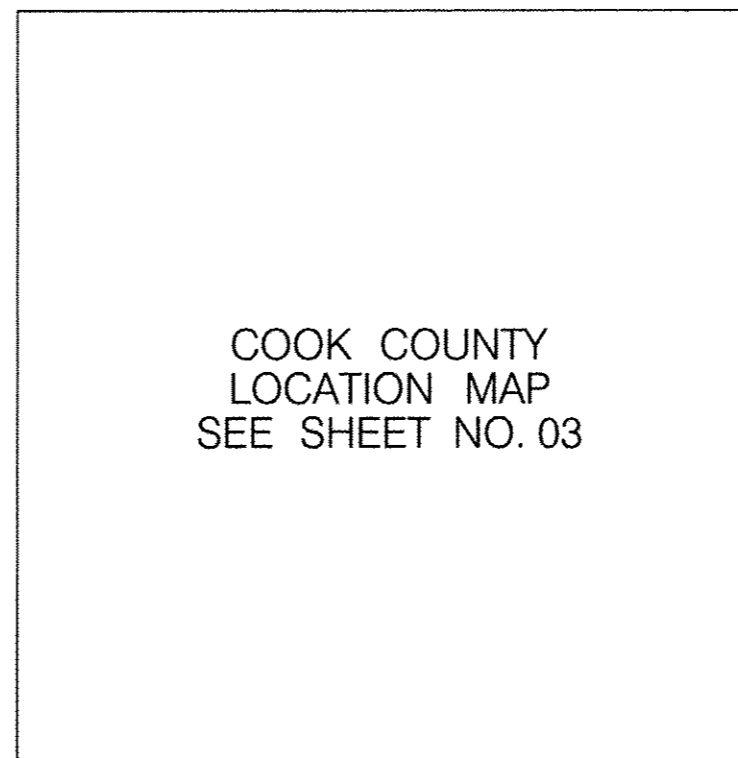
FOR INDEX OF SHEETS, SEE SHEET NO. 2

**IDOT STANDARDS:**

STD. NO.	TITLE
000001-06	STANDARD SYMBOLS, ABBREVIATIONS, AND PATTERNS
701001-02	OFF-RD OPERATIONS, 2L, 2W MORE THAN 15' (4.5m) AWAY
701006-04	OFF-RD OPERATIONS, 2L, 2W, 15' (4.5m) TO 24" (600mm) FROM PAVEMENT EDGE
701101-03	OFF-RD OPERATIONS, MULTILANE, 15' (4.5 m) TO 24" (600 mm) FROM PAVEMENT EDGE
701106-02	OFF-RD OPERATIONS, MULTILANE, MORE THAN 15' (4.5m) AWAY
701501-06	URBAN LANE CLOSURE, 2L, 2W, UNDIVIDED
701502-05	URBAN LANE CLOSURE 2L, 2W WITH BIDIRECTIONAL LEFT TURN LANE
701801-08	URBAN LANE CLOSURE, MULTILANE, 1W OR 2W WITH NONTRAVERSABLE MEDIAN
701608-08	URBAN LANE CLOSURE, MULTILANE, 2W WITH MOUNTABLE MEDIAN
701701-08	URBAN LANE CLOSURE, MULTILANE INTERSECTION
701901-02	TRAFFIC CONTROL DEVICES
720001-01	SIGN PANEL MOUNTING DETAILS
857001-01	STANDARD PHASE DESIGNATION DIAGRAMS AND PHASE SEQUENCES
862001-01	UNINTERRUPTABLE POWER SUPPLY (UPS)
880008-01	TRAFFIC SIGNAL MOUNTING DETAILS

**VARIOUS LOCATIONS IN CENTRAL COOK COUNTY**  
**LIGHT EMITTING DIODE (LED) INSTALLATION**

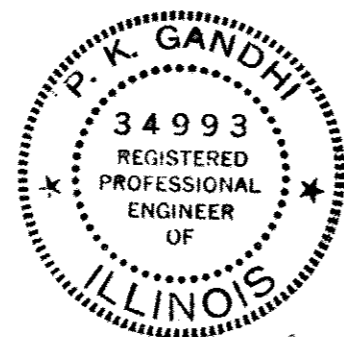
**SECTION: 2013-036TS**  
**COOK COUNTY**  
**C-91-381-13**



FULL SIZE PLANS HAVE BEEN PREPARED USING STANDARD ENGINEERING SCALES. REDUCED SIZED PLANS WILL NOT CONFORM TO STANDARD SCALES. IN MAKING MEASUREMENTS ON REDUCED PLANS, THE ABOVE SCALES MAY BE USED.

J.U.L.I.E.  
 JOINT UTILITY LOCATION INFORMATION FOR EXCAVATION  
 1-800-892-0123  
 OR 811

DIGGERS  
 CHICAGO - UTILITY ALERT NETWORK  
 1-312-744-7000



*P.K. Gandhi. 7/11/2013*  
*Exp. 11/30/2013*

STATE OF ILLINOIS  
 DEPARTMENT OF TRANSPORTATION  
 DIVISION OF HIGHWAYS

SUBMITTED *July 12, 2013*  
*John Bertman, PE*  
 DEPUTY DIRECTOR OF HIGHWAYS, REGION ENGINEER

*Aug 16, 2013*  
*John D. Baramelli, PE*  
 ENGINEER OF DESIGN AND ENVIRONMENT

*Aug 16, 2013*  
*Omer Osman, PE*  
 DIRECTOR OF HIGHWAYS, CHIEF ENGINEER

**PRINTED BY THE AUTHORITY**  
**OF THE STATE OF ILLINOIS**

**CONTRACT NO. 60W82**

BUREAU OF TRAFFIC - SUJUD MAHMOUD - (847) 705-4420