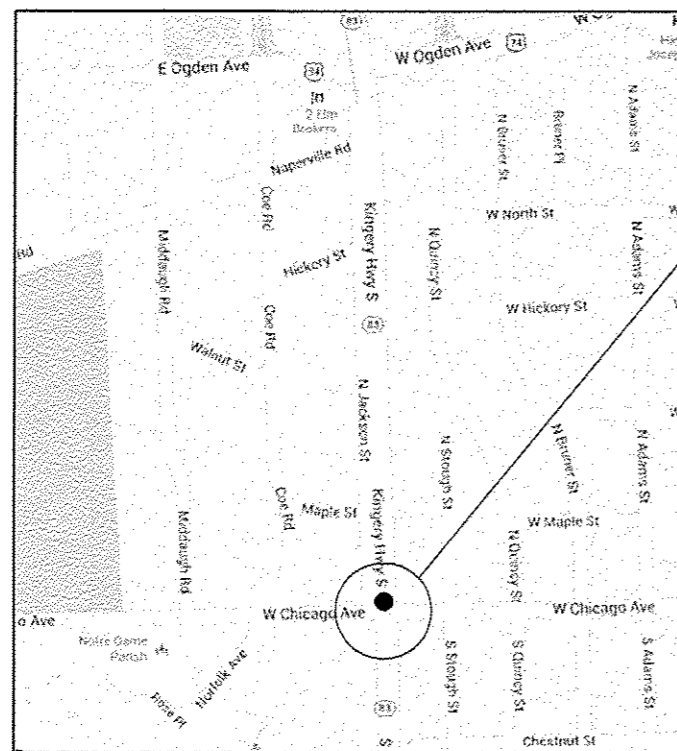




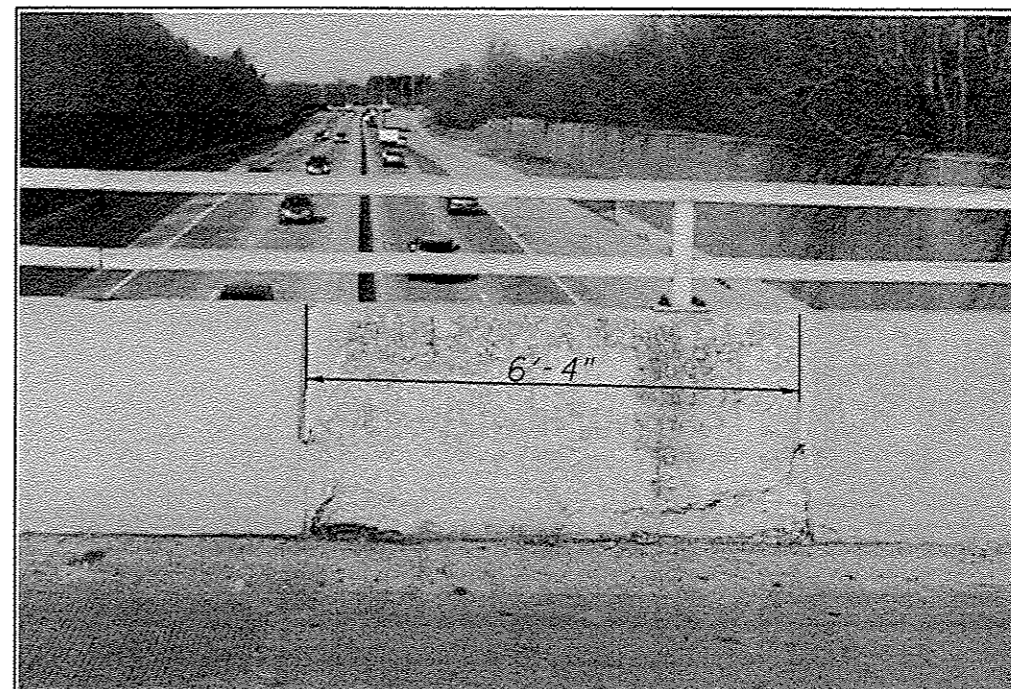
R11E

T38N



**LOCATION 1: CHICAGO AVENUE AT IL 83 (KINGERY HIGHWAY), WB**  
5TH PANEL FROM THE WEST OF NORTH PARAPET  
(SN 022-0211)

**VILLAGE OF HINSDALE  
DOWNER'S GROVE TOWNSHIP  
DUPAGE COUNTY**



(022-0211) NORTH PARAPET REPAIR (LOOKING NORTH)  
FOR MORE DETAIL SEE SHEET #7

**TRAFFIC DATA:**

SPEED LIMIT: 30 MPH  
2012 ADT: 6350



*David Carl Puzey* 8/7/13  
Expires 11/30/14

FILE NAME :	USER NAME : SEYMORECP	DESIGNED - <i>JAM</i>	REVISED -
c:\pwwork\pwwork\seymorecp\0346982\01	9813-ahs-plan.dgn	DRAWN -	REVISED -
Default	PLOT SCALE * 100.0000' / in.	CHECKED - <i>VAV</i>	REVISED -
	PLOT DATE * 7/11/2013	DATE -	REVISED -

**STATE OF ILLINOIS  
DEPARTMENT OF TRANSPORTATION**

**LOCATION 1 (SN 022-0211), NORTH PARAPET  
CHICAGO AVENUE AT IL 83 (KINGERY HIGHWAY)**

SCALE: SHEET 1 OF 2 SHEETS STA. TO STA.

F.A. RTE.	SECTION	COUNTY	TOTAL SHEETS	SHEET NO.
VAR.	2013-0411	VARIOUS	44	8
CONTRACT NO. 60W86			ILLINOIS FED. AID PROJECT	