

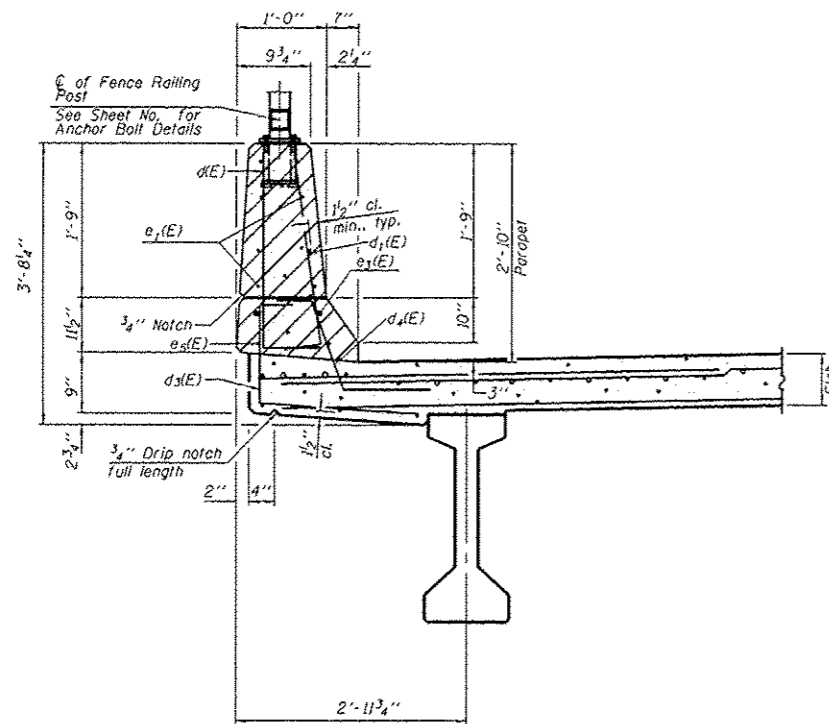
**LEGEND**

HATCHED AREA INDICATES CONCRETE REMOVAL

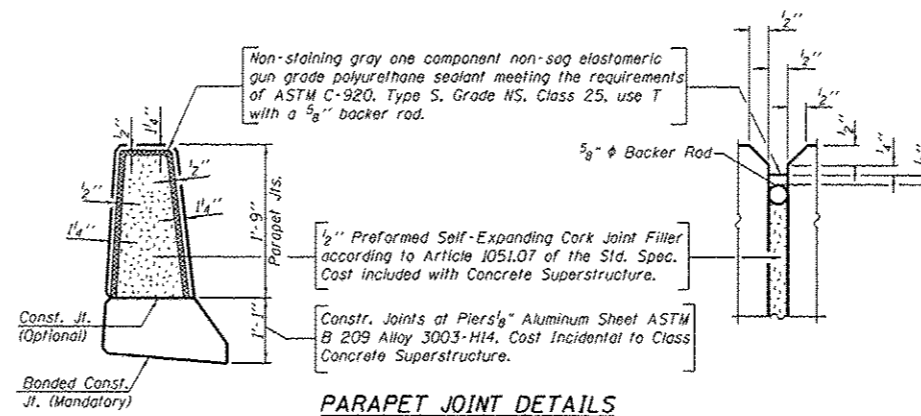
**ELEVATION**

**SUPERSTRUCTURE  
BILL OF MATERIAL**

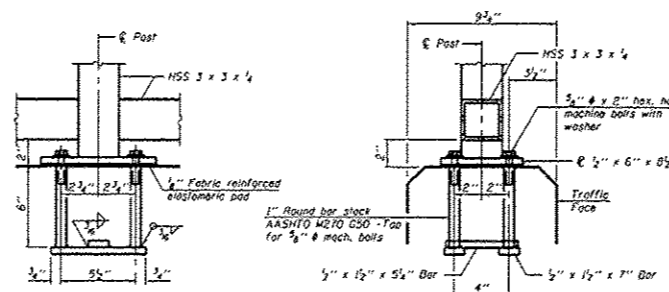
Bar	No.	Size	Length	Shape	
d1(E)	7	#4	3'-0"		
d1(E)	7	#5	3'-0"		
d1(E)	6	#4	6'-1"		
d3(E)	2	#8	6'-1"		
d5(E)	2	#5	6'-1"		
<b>REINFORCEMENT BARS, EPOXY COATED</b>				Pound	106
<b>CONCRETE SUPERSTRUCTURE</b>				Cu. Yds.	1.6
<b>CONCRETE REMOVAL</b>				Cu. Yds.	1.6
<b>SAW CUTS</b>				Foot	6
<b>PROTECTIVE COAT</b>				Sq. Yds.	6.08



**EXISTING SECTION THRU PARAPET**



**PARAPET JOINT DETAILS**



**EXISTING ANCHOR BOLT DETAILS**

**NOTES:**

- 1) IN LIEU OF THE CAST-IN-PLACE ANCHOR DEVICE SHOWN, THE CONTRACTOR HAS THE OPTION OF DRILLING AND SETTING 3/8" DIAMETER ANCHOR RODS ACCORDING TO ARTICLE 509.05 OF THE STANDARD SPECIFICATIONS. EMBEDMENT SHALL BE ACCORDING TO THE MANUFACTURER SPECIFICATIONS.
- 2) THREADED RODS, NUTS AND WASHERS SHALL CONFORM TO AASHTO M164.
- 3) NUTS FOR 3/8" DIAMETER THREADED ANCHOR RODS CONNECTING THE BASE PLATE TO THE CONCRETE TO BE TIGHTENED TO A SNUG FIT AND GIVEN AN ADDITIONAL 1/8" TURN.
- 4) ALL STEEL ELEMENTS SHALL BE GALVANIZED ACCORDING TO ARTICLE 509.05 OF THE STANDARD SPECIFICATIONS.

**NORTH PARAPET DETAILS  
STRUCTURE NO. 022-0211**

**BAR d1(E) &  
BAR d3(E)**

**BENT BAR DIAGRAM**

**NOTES:**

- All edges shall have 3/4" chamfer.
- Bar length shall be verified in field prior to ordering the reinforcement.

FILE NAME =	USER NAME = SEYMORECP	DESIGNED -	REVISED -	<b>STATE OF ILLINOIS DEPARTMENT OF TRANSPORTATION</b>	<b>LOCATION 1 (SN 022-0211), NORTH PARAPET CHICAGO AVENUE AT IL 83 (KINGERY HIGHWAY)</b>	F.A. RTE.	SECTION	COUNTY	TOTAL SHEETS	SHEET NO.	
Default	9813-shr-plan.dgn	DRAWN -	REVISED -			VAR.	2013-0411	VARIOUS	44	9	
	PLOT SCALE = 100.0000' / 1"	CHECKED -	REVISED -			SCALE: SHEET 2 OF 2 SHEETS STA. TO STA.					
	PLOT DATE = 7/23/2013	DATE -	REVISED -			CONTRACT NO. 60W86 ILLINOIS FED. AID PROJECT					