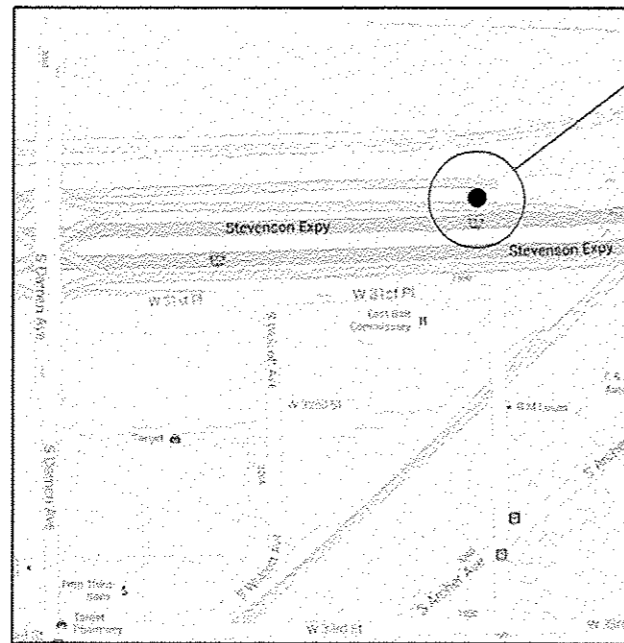




R14E

T39N



LOCATION 6: I-55 (STEVENSON EXPRESSWAY), WB
1/4 MILE EAST OF DAMEN AVE. OVERPASS, RIGHT SIDE
(SN 016-1083)

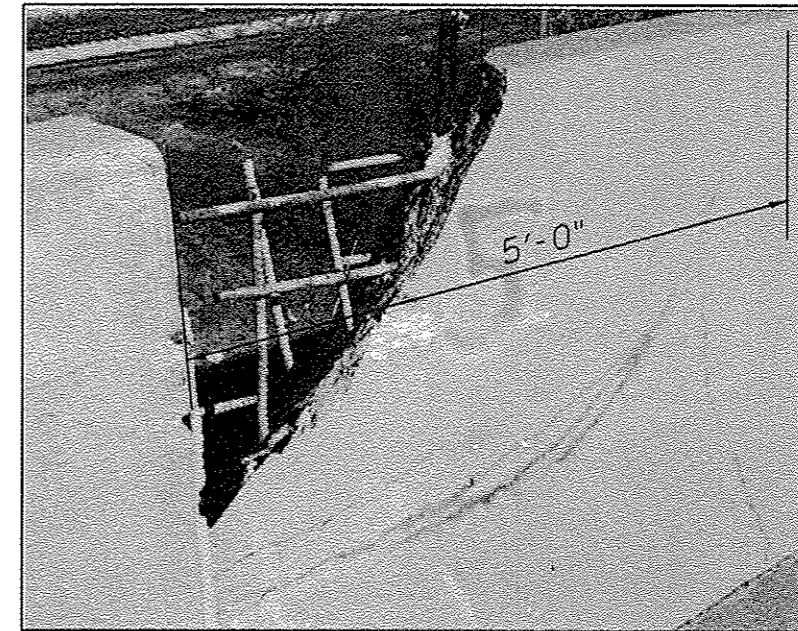
**CITY OF CHICAGO
SOUTH CHICAGO TOWNSHIP
COOK COUNTY**

TRAFFIC DATA:

SPEED LIMIT: 55 MPH
2012 ADT: 132100



David Carl Puzey 8/7/13
Expires 11/30/14



WB NORTH PARAPET REPAIR
FOR MORE DETAILS, SEE SHEET #7

FILE NAME =	USER NAME = SEYMORECP	DESIGNED - JAH	REVISED -	STATE OF ILLINOIS DEPARTMENT OF TRANSPORTATION	LOCATION 6 (SN 016-1083), WB NORTH PARAPET I-55 (STEVENSON EXPRESSWAY)	F.A. RTE.	SECTION	COUNTY	TOTAL SHEETS	SHEET NO.	
0:\pwork\p\1013\seymorecp\0348902\019013-ah-plot.dgn	19013-ah-plot.dgn	DRAWN -	REVISED -			VAR.	2013-0411	VARIOUS	44	19	
Default	PLOT SCALE = 100.0000 1/1 in.	CHECKED - VAD	REVISED -			CONTRACT NO. 60W06					
	PLOT DATE = 7/11/2013	DATE -	REVISED -			SCALE:	SHEET 1 OF 2 SHEETS	STA.	TO STA.	ILLINOIS FED. AID PROJECT	