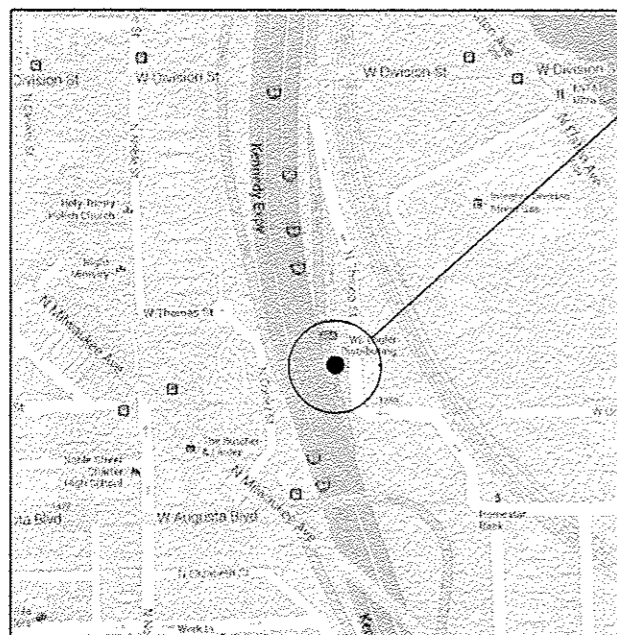




R14E

T39N

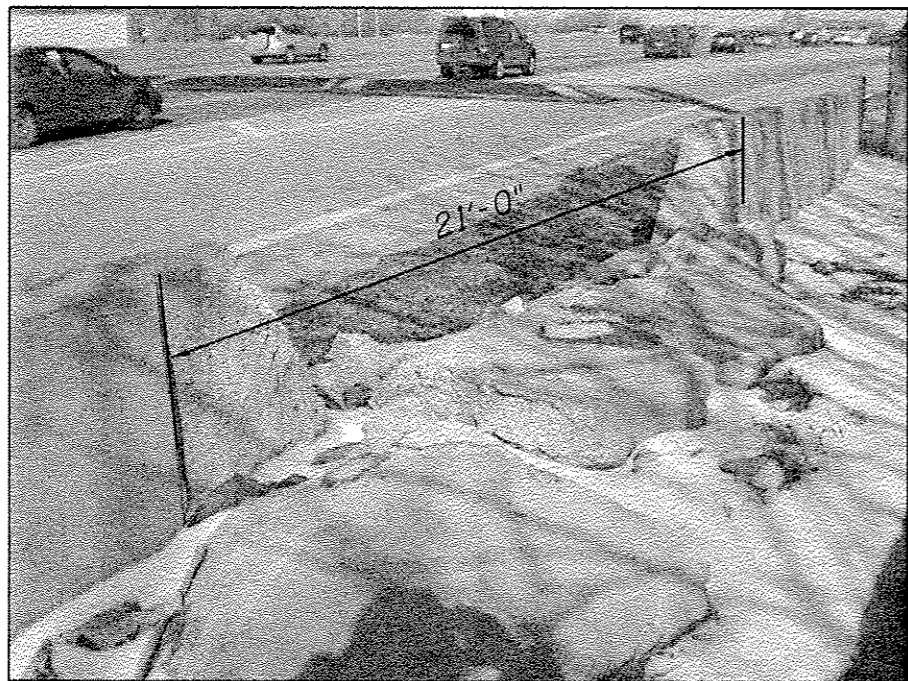
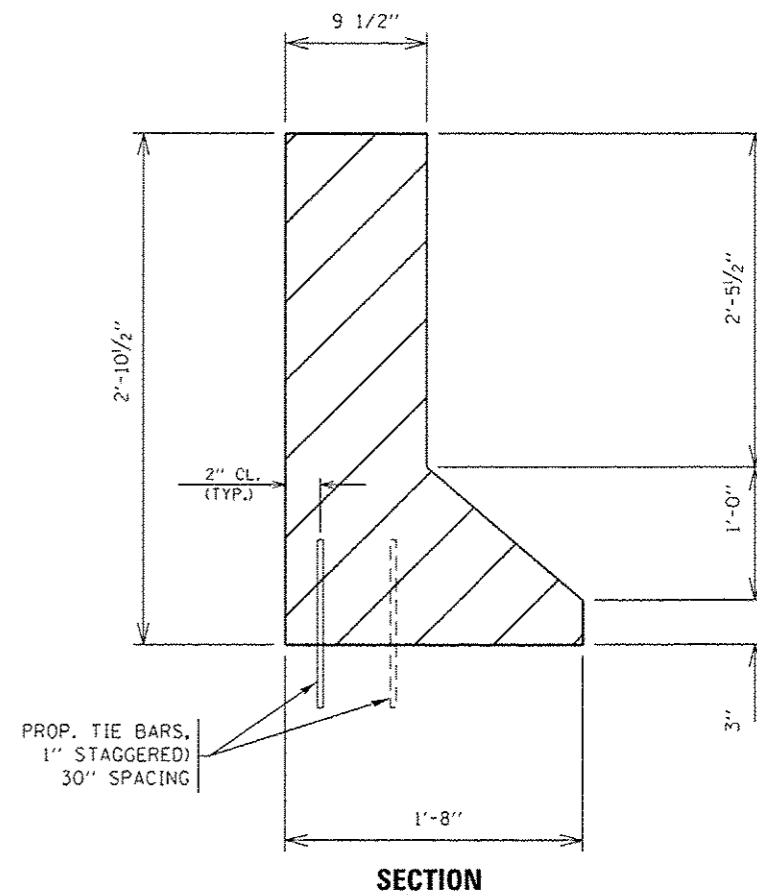


LOCATION 11: I-90/I-94 (KENNEDY EXPRESSWAY), NB
0.2 MILES SOUTH OF DIVISION ST. OVERPASS, RIGHT SIDE

**CITY OF CHICAGO
WEST CHICAGO TOWNSHIP
COOK COUNTY**

BILL OF MATERIAL

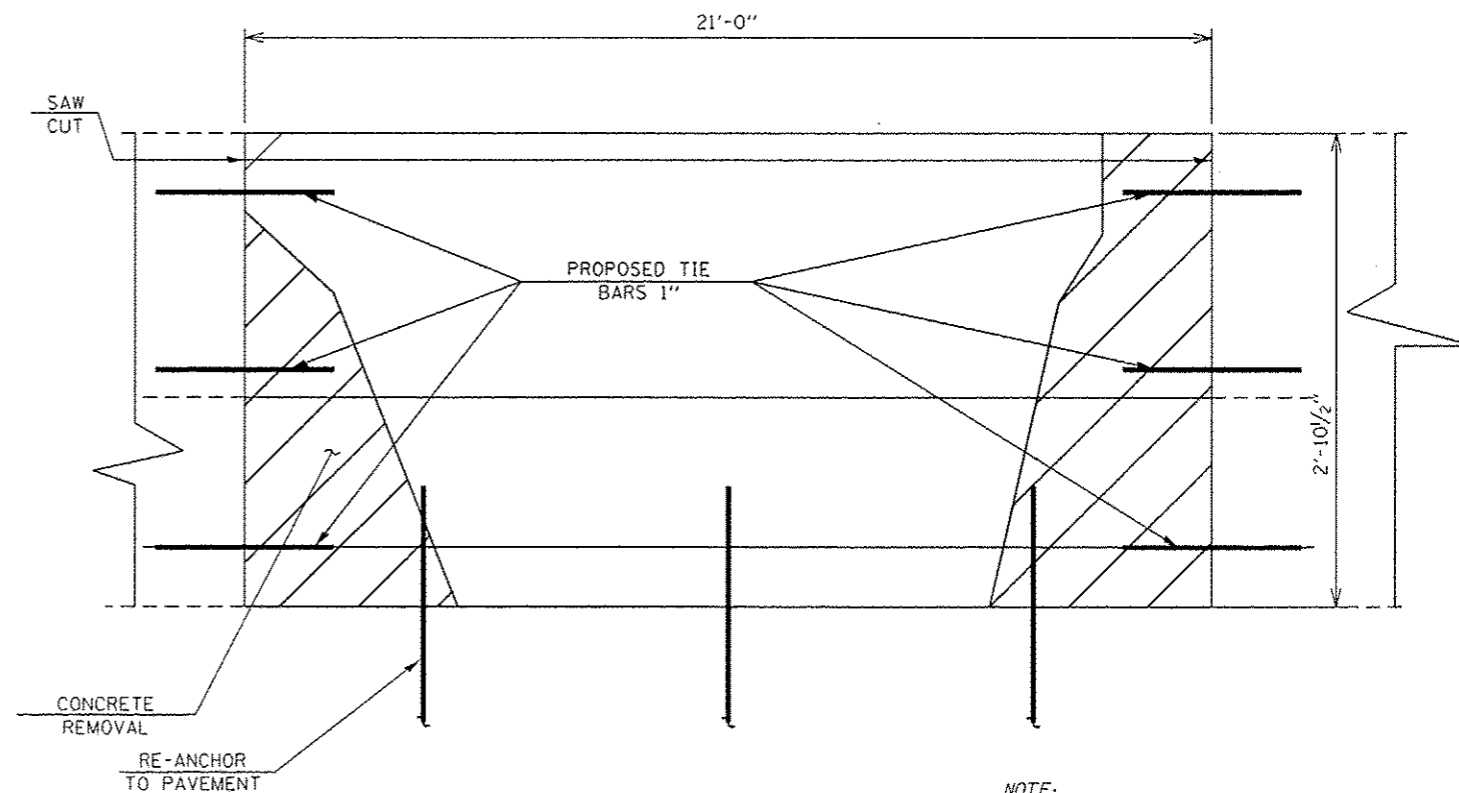
ITEM	UNIT	QUANTITY
CONCRETE REMOVAL	Cu. Yds.	0.3
CONCRETE STRUCTURE	Cu. Yds.	2.2
TIE BARS	Each	15
SAW CUTS	Foot	5
PROTECTIVE COAT	Sq. Yds.	9.5



FULL DEPTH REPAIR
REPLACE 21' OF BARRIER WALL
FOR MORE DETAILS, SEE SHEET #5

TRAFFIC DATA:

SPEED LIMIT: 55 MPH
2012 ADT: 292500



ELEVATION

NOTE:
VERIFY LOCATION OF ELECTRICAL CONDUIT IN BARRIER WALL IN FIELD.

FILE NAME =	USER NAME = SEYMDRECP	DESIGNED -	REVISED -
ci:\pwwork\p\idat\seymdrecp\08348982\01	0813-shc-plan.dgn	DRAWN -	REVISED -
Default	PLOT SCALE = 100.0000' / 1"	CHECKED -	REVISED -
	PLOT DATE = 7/23/2013	DATE -	REVISED -

**STATE OF ILLINOIS
DEPARTMENT OF TRANSPORTATION**

LOCATION 11		F.A. RTE.	SECTION	COUNTY	TOTAL SHEETS	SHEET NO.
I-90/I-94 (KENNEDY EXPRESSWAY)		VAR.	2013-0411	VARIOUS	44	27
SCALE: SHEET OF SHEETS STA. TO STA.		CONTRACT NO. 60W86		ILLINOIS FED. AID PROJECT		