

F.A.P. RTE.	SECTION	COUNTY	TOTAL SHEETS	SHEET NO.
344	(39&41)I-2	LAKE	9	1
		ILLINOIS	CONTRACT NO. 62916	

STATE OF ILLINOIS
DEPARTMENT OF TRANSPORTATION
DIVISION OF HIGHWAYS
**PROPOSED
HIGHWAY PLANS**

FOR INDEX OF SHEETS, SEE SHEET NO. 2

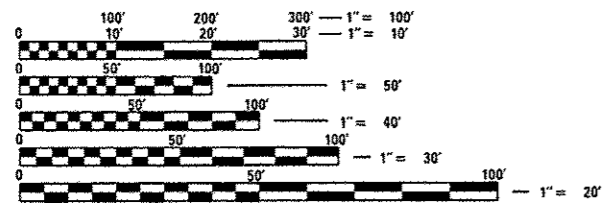
IMPROVEMENT IS LOCATED
IN THE VILLAGE OF OLD
MILL CREEK

FAP ROUTE 344: US 45 (MCHENRY RD.)
N. OF GRASS LAKE ROAD
SECTION (39&41)I-2
RETAINING WALL REMOVAL
LAKE COUNTY

C-91-140-05

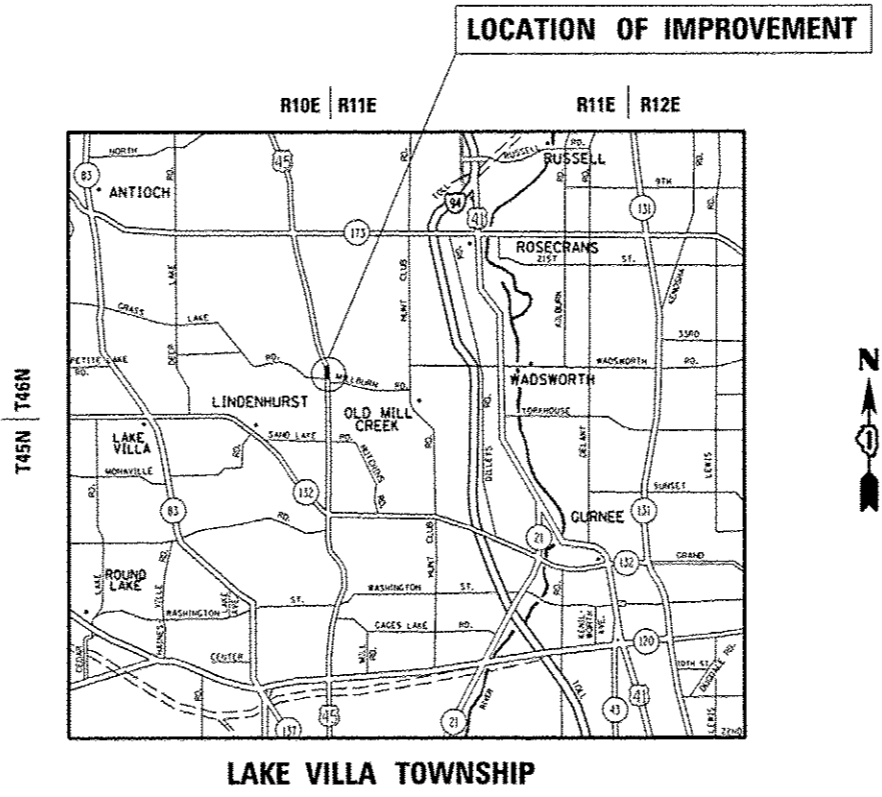
TRAFFIC DATA

2011 ADT = 7000
POSTED SPEED = 40 MPH



FULL SIZE PLANS HAVE BEEN PREPARED USING STANDARD ENGINEERING SCALES. REDUCED SIZED PLANS WILL NOT CONFORM TO STANDARD SCALES. IN MAKING MEASUREMENTS ON REDUCED PLANS, THE ABOVE SCALES MAY BE USED.

J.U.L.I.E.
JOINT UTILITY LOCATION INFORMATION FOR EXCAVATION
1-800-892-0123
OR 811



GROSS LENGTH = 94.00 FT. = 0.018 MILE
NET LENGTH = 94.00 FT. = 0.018 MILE

PROJECT ENGINEER: J. ALAIN MIDY (847)-221-3056
PROJECT MANAGER: ISSAM RAYYAN
CONTRACT NO. 62916

STATE OF ILLINOIS
DEPARTMENT OF TRANSPORTATION
DIVISION OF HIGHWAYS

SUBMITTED July 9 2013
John F. ...
DEPUTY DIRECTOR OF HIGHWAYS, REGION ENGINEER

Aug 16 2013
John D. Baranzelli PE
ENGINEER OF DESIGN AND ENVIRONMENT

Aug 16 2013
Osman ...
DIRECTOR OF HIGHWAYS, CHIEF ENGINEER

**PRINTED BY THE AUTHORITY
OF THE STATE OF ILLINOIS**