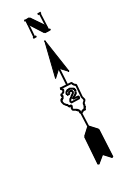
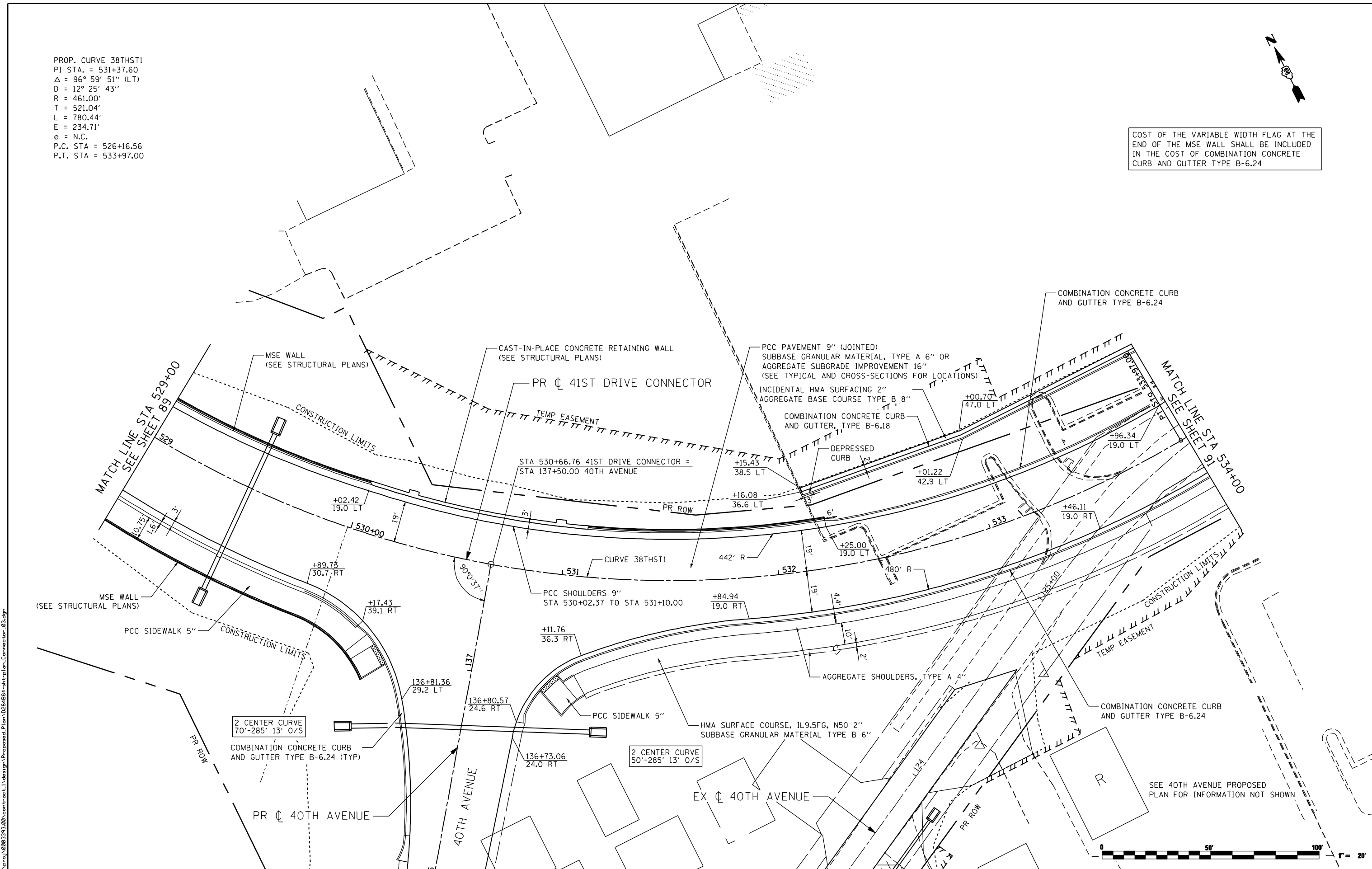


PROP. CURVE 38THST1
 PI STA. = 531+37.60
 $\Delta = 96^\circ 59' 51''$ (LT)
 $D = 12^\circ 25' 43''$
 $R = 461.00'$
 $T = 521.04'$
 $L = 780.44'$
 $E = 234.71'$
 $e = N.C.$
 P.C. STA = 526+16.56
 P.T. STA = 533+97.00



COST OF THE VARIABLE WIDTH FLAG AT THE END OF THE MSE WALL SHALL BE INCLUDED IN THE COST OF COMBINATION CONCRETE CURB AND GUTTER TYPE B-6.24



FILE NAME: c:\projects\0803193\08\contract\1\design\proposed\plan\0264884-41st-plan-Connector_03.dgn

SEE 40TH AVENUE PROPOSED PLAN FOR INFORMATION NOT SHOWN



Ciorba Group, Inc.
 CONSULTING ENGINEERS
 5507 North Cumberland Avenue, Suite 402
 Chicago, Illinois 60656
 Tel. 773.776.4009 Fax 773.776.4014

USER NAME = espino	DESIGNED -	REVISD -
	DRAWN -	REVISD -
PLOT SCALE = 48.0000 "/>		

**STATE OF ILLINOIS
 DEPARTMENT OF TRANSPORTATION**

**41ST DRIVE CONNECTOR
 PROPOSED PLAN**

SCALE: SHEET NO. OF SHEETS STA. TO STA.

F.A.P. RTE.	SECTION	COUNTY	TOTAL SHEETS	SHEET NO.
595	(142-1)R & 142-1)B	ROCK ISLAND	507	90
CONTRACT NO. 64B84				
ILLINOIS FED. AID PROJECT				