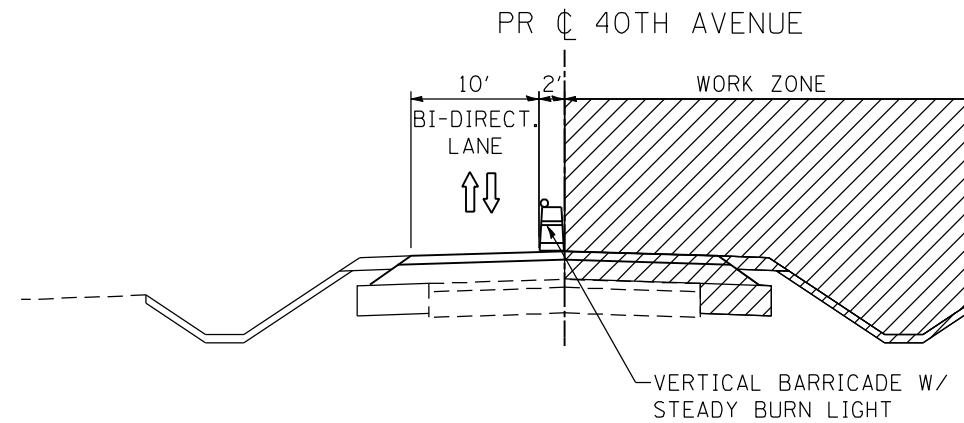


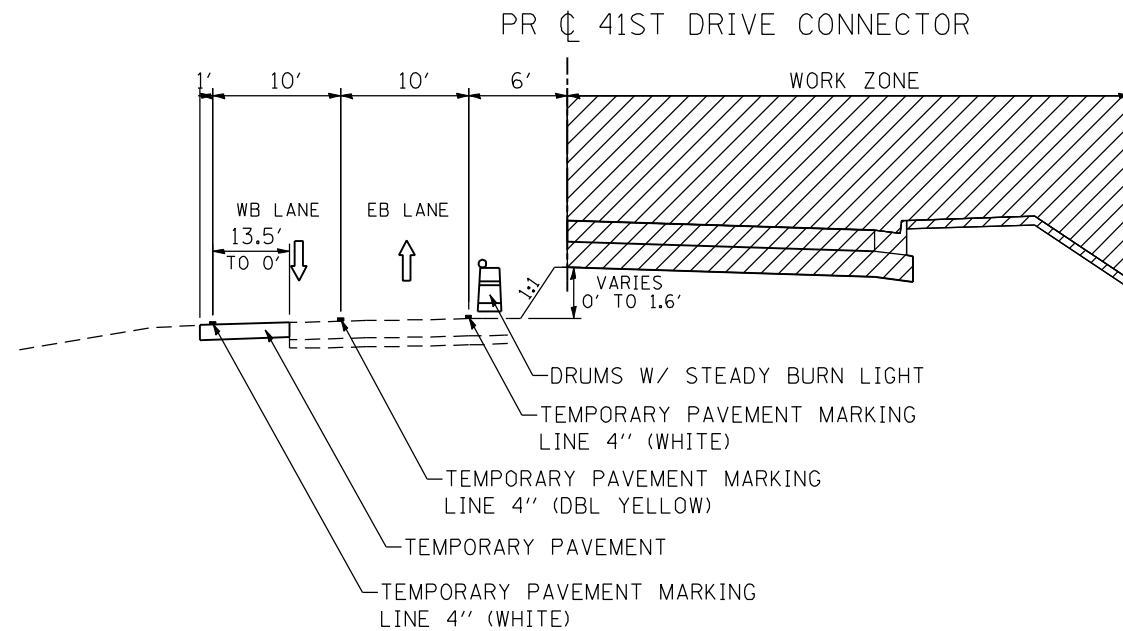
**40TH AVENUE
STAGE 3A**
STA 131+35.0 TO STA 134+50.0



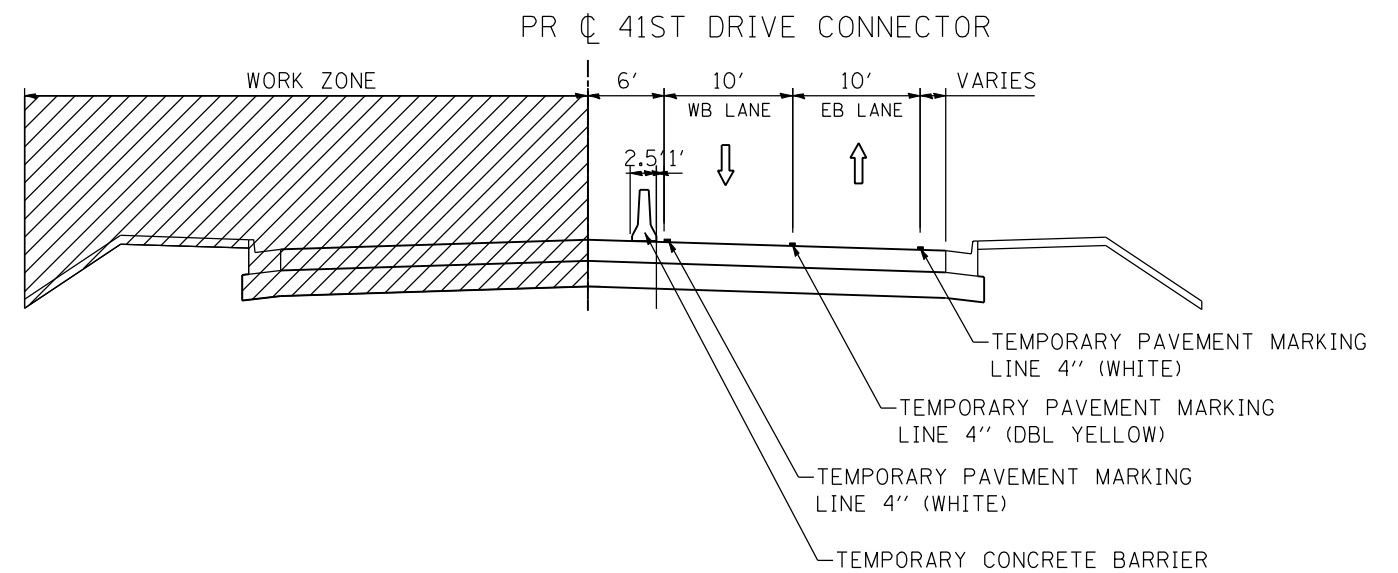
**40TH AVENUE
STAGE 3B**
STA 131+35.0 TO STA 134+50.0

CONTRACTOR SHALL MAINTAIN AN ADEQUATE LANE WIDTH FOR TRAFFIC IN AREAS WHERE THE SEPERATION BETWEEN THE WORKZONE AND BI-DIRECTIONAL TRAVEL LANE IS 0'.

STA 134+50.0 TO STA 136+97.3
FULL WIDTH OF ROADWAY TO BE CONSTRUCTED AT ONE TIME IN STAGE 2.



**41ST DRIVE CONNECTOR
STAGE 4**
STA 537+20.0 TO STA 540+65.5



**41ST DRIVE CONNECTOR
STAGE 5**
STA 537+20.0 TO STA 540+65.5

FILE NAME: c:\projects\08031308\contract\act\1\design\1\01\typical\Sections\0264884-int-401-TYPB.dgn

USER NAME = espino	DESIGNED -	REVISED -
PLOT SCALE = 15.0000 "/>		
PLOT DATE = 3/11/2013	DATE = 3/11/2013	REVISED -

F.A.P. RTE.	SECTION	COUNTY	TOTAL SHEETS	SHEET NO.
595	(142-1)R & 142-1HB	ROCK ISLAND	507	118
CONTRACT NO. 64B84				
ILLINOIS FED. AID PROJECT				