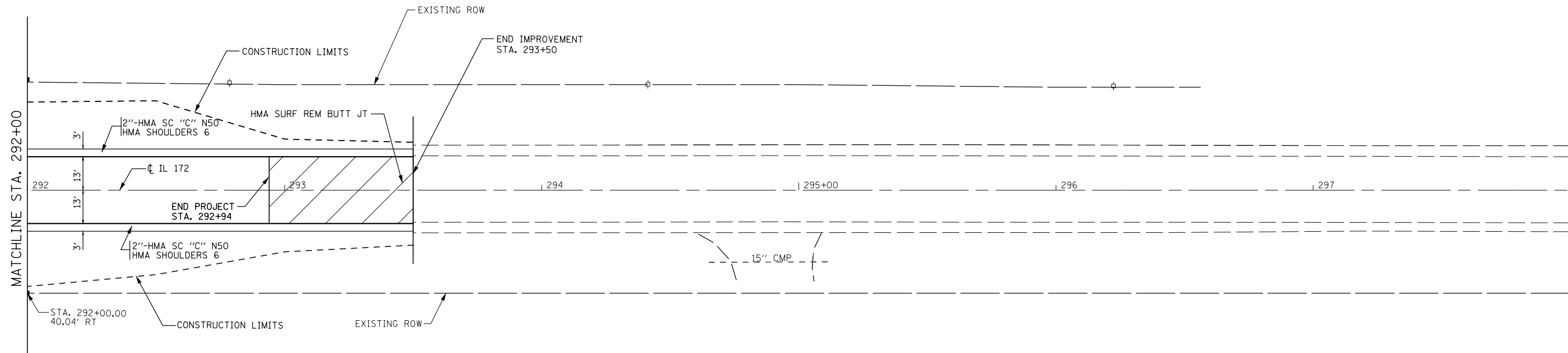


LUTHER A STULZMAN



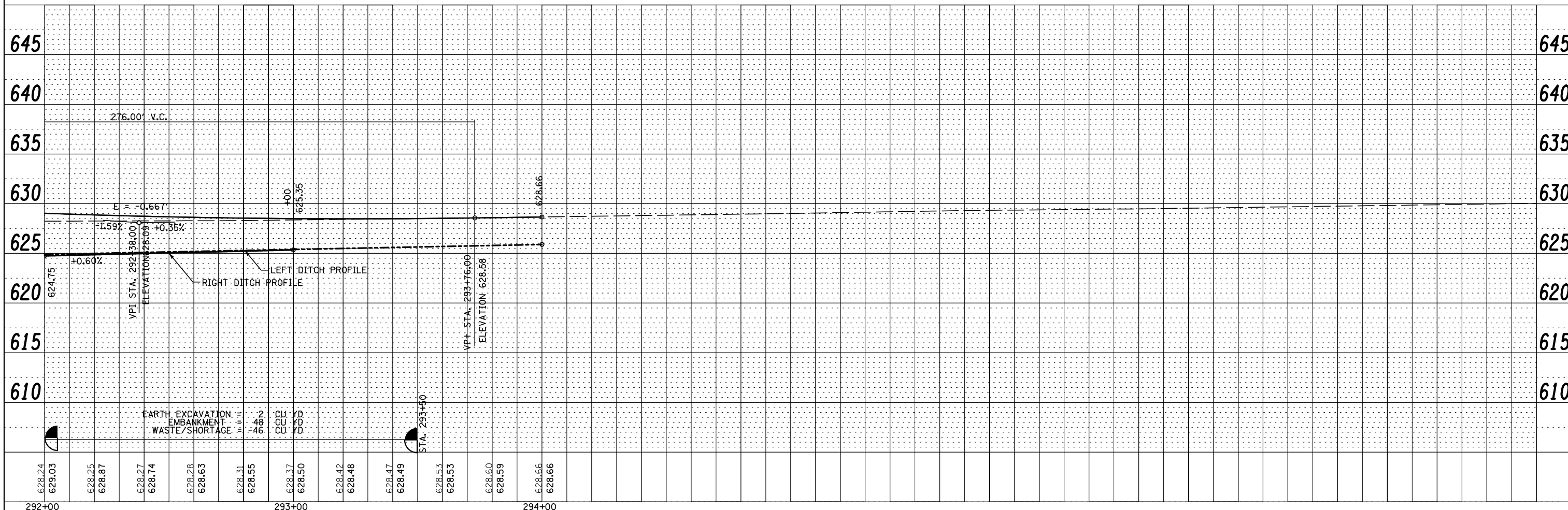
PLAN	SURVEYED	BY	DATE
	PLOTTED		
	ALIGNED		
	CHECKED		
	FILED		
NOTE BOOK NO.	CARD FILE NAME		



JAMES & NORMA MEADER



PROFILE	SURVEYED	BY	DATE
	PLOTTED		
	GRADES CHECKED		
	STRUCTURE NOTATIONS CHECKED		
NOTE BOOK NO.			



628.24	629.03	628.25	628.87	628.27	628.74	628.28	628.63	628.31	628.55	628.37	628.50	628.42	628.48	628.47	628.49	628.53	628.53	628.60	628.59	628.66	628.66
292+00			293+00						294+00												

FILE NAME =	USER NAME = *USER*	DESIGNED - RAC	REVISED -
FILEL		DRAWN - LCR	REVISED -
	PLOT SCALE = *SCALE*	CHECKED - DAZ	REVISED -
	PLOT DATE = *DATE*	DATE - 6-21-13	REVISED -

STATE OF ILLINOIS
DEPARTMENT OF TRANSPORTATION

ZROKA
engineering
Zroka Engineering, P.C.
4216 North Hermitage
Chicago, IL 60613

PLAN AND PROFILE

SCALE: 1" = 20' SHEET 3 OF 3 SHEETS STA. 292+00 TO STA. 293+50

F.A.S. RTE.	SECTION	COUNTY	TOTAL SHEETS	SHEET NO.
200	141B-2	WHITESIDE	77	17
CONTRACT NO. 64D81				
ILLINOIS FED. AID PROJECT				