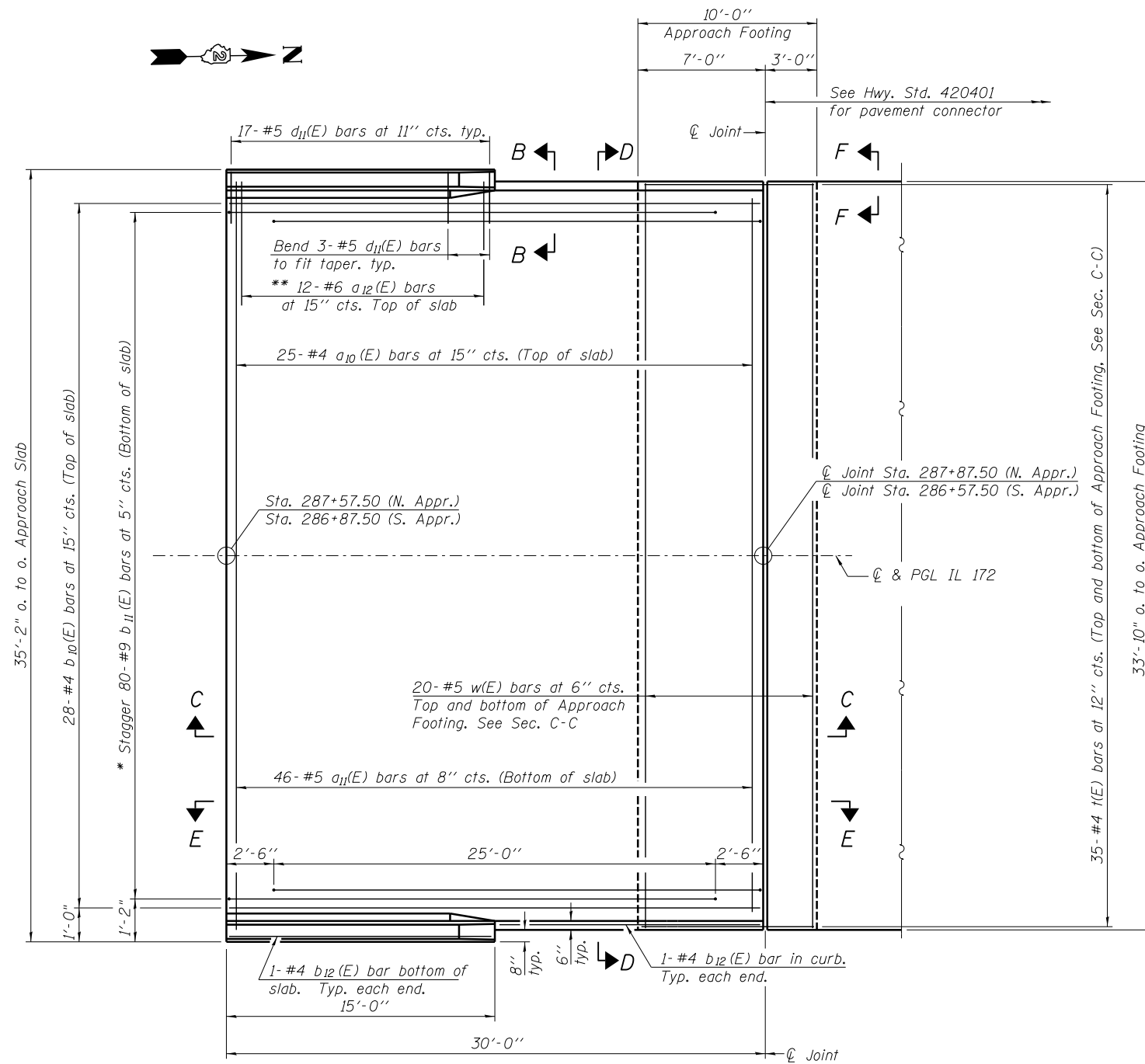
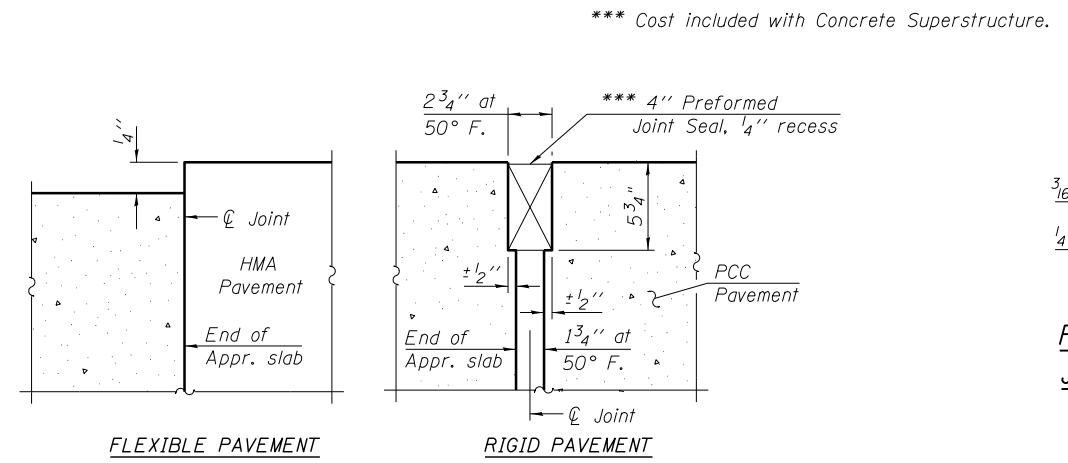


Notes:
See sheet 11 of 19 for Sections C-C & D-D and View E-E.
 $a_{10}(E)$ and $a_{11}(E)$ bar spacings measured along \varnothing Rdwy.

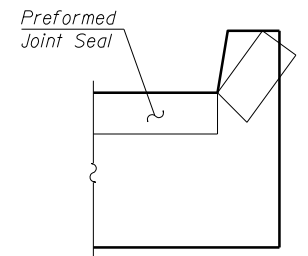


NORTH APPROACH SLAB PLAN
(South Approach Slab Similar)

* Tilt #9 $b_{11}(E)$ bars as required to maintain clearance.
** Space between $a_{10}(E)$ bars, typ. ea. parapet.

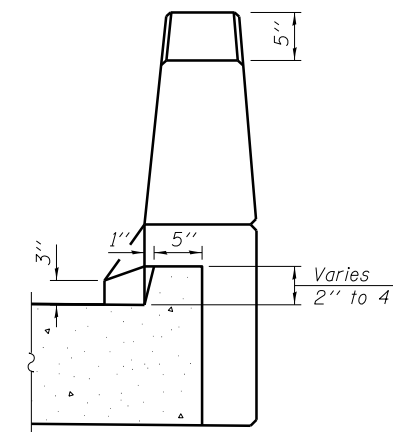


DETAIL A



VIEW F-F

Angle Preformed Joint Seal at 45° at curbs when req'd for drainage.



VIEW B-B

FILE NAME = ...E4081-SN0980119-010-Appr-Slab1.dgn



Zroka Engineering, P.C.
4216 North Hermitage
Chicago, IL 60613

USER NAME = SAW	DESIGNED - PMM	REVISED -
PLOT SCALE = 0:2.0000 '1' / in.	CHECKED - DAZ	REVISED -
PLOT DATE = 5/2/2013	DRAWN - SAW	REVISED -
	CHECKED - LAS	REVISED -

STATE OF ILLINOIS
DEPARTMENT OF TRANSPORTATION

BRIDGE APPROACH SLAB DETAILS 1
S.N. 098-0119

SHEET NO. 10 OF 19 SHEETS

F.A.S. RTE.	SECTION	COUNTY	TOTAL SHEETS	SHEET NO.
200	141B-2	WHITESIDE	77	35
CONTRACT NO. 64081				

ILLINOIS FED. AID PROJECT