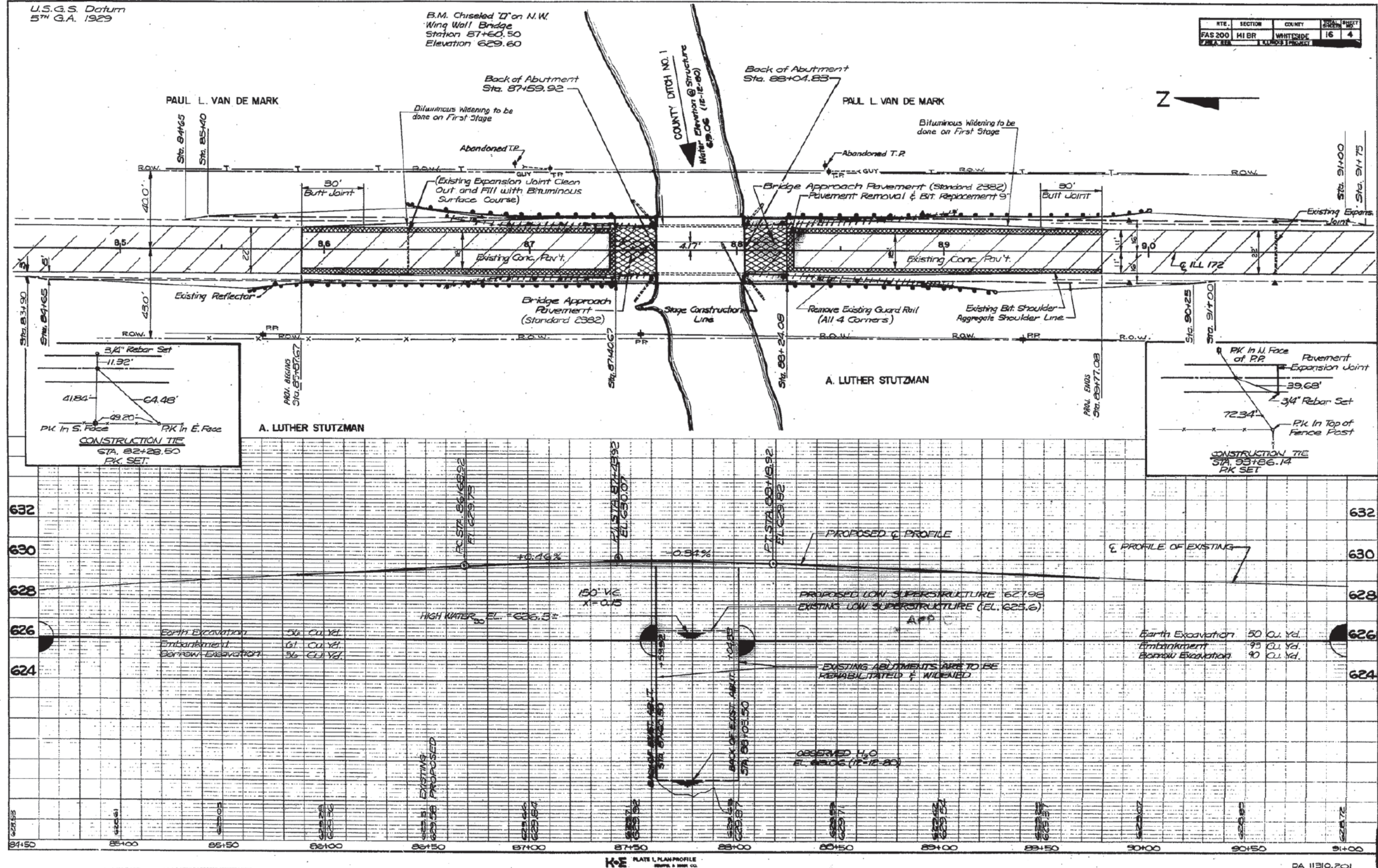


U.S.G.S. Datum
5TH G.A. 1929

B.M. Chiseled 'D' on N.W.
Wing Wall Bridge
Station 87+60.50
Elevation 629.60

ROUTE	SECTION	COUNTY	SHEET NO.	TOTAL SHEETS
FAS 200	141B-2	WHITESIDE	16	4



FOOTED
NOTE BOOK
No. 21

REVISIONS
DATE
BY
REASON

FILE NAME =
FILE

USER NAME = *USER*	DESIGNED - RAC	REVISED -
PLOT SCALE = *SCALE*	DRAWN - LCR	REVISED -
PLOT DATE = *DATE*	CHECKED - DAZ	REVISED -
	DATE - 06-21-13	REVISED -

STATE OF ILLINOIS
DEPARTMENT OF TRANSPORTATION

ZROKA
engineering
Zroka Engineering, P.C.
4216 North Hermitage
Chicago, IL 60613

EXISTING BRIDGE PLANS - 1982
FOR INFORMATION ONLY
SCALE: SHEET OF SHEETS STA. 283+43 TO STA. 293+50

F.A.S. RTE.	SECTION	COUNTY	TOTAL SHEETS	SHEET NO.
200	141B-2	WHITESIDE	77	49

CONTRACT NO. 64D81
ILLINOIS FED. AID PROJECT