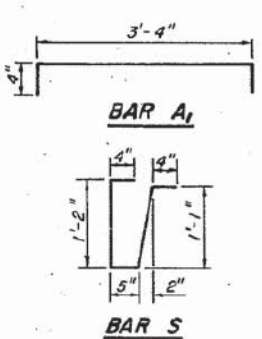
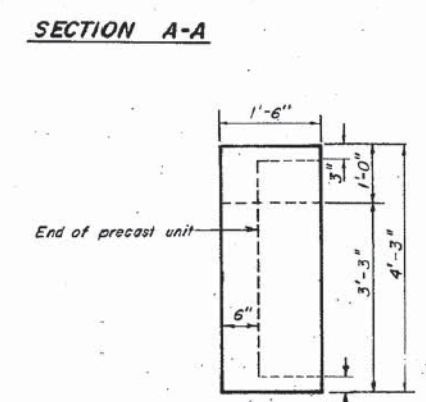
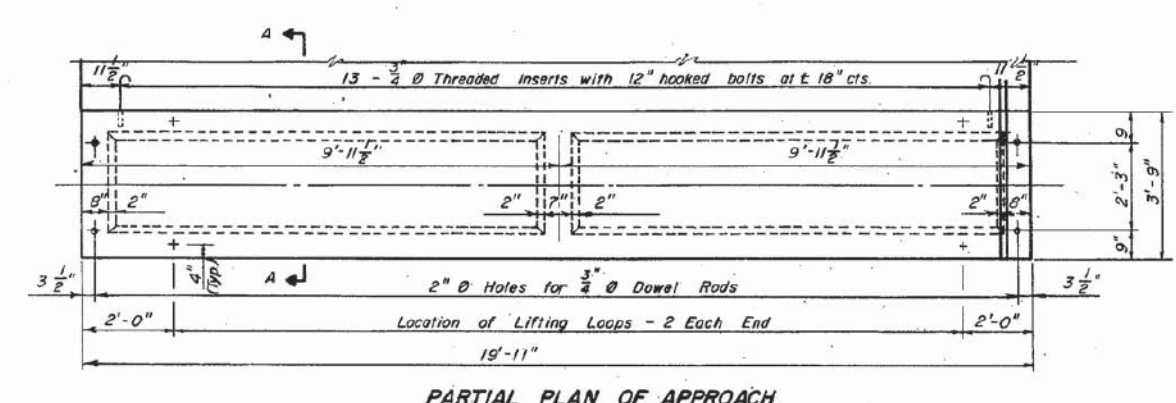
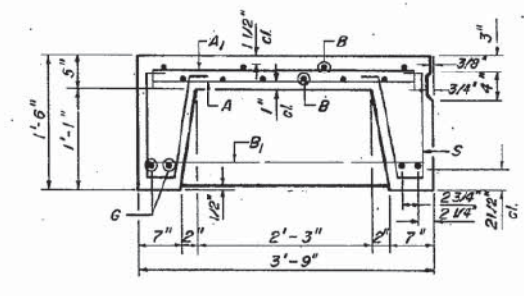
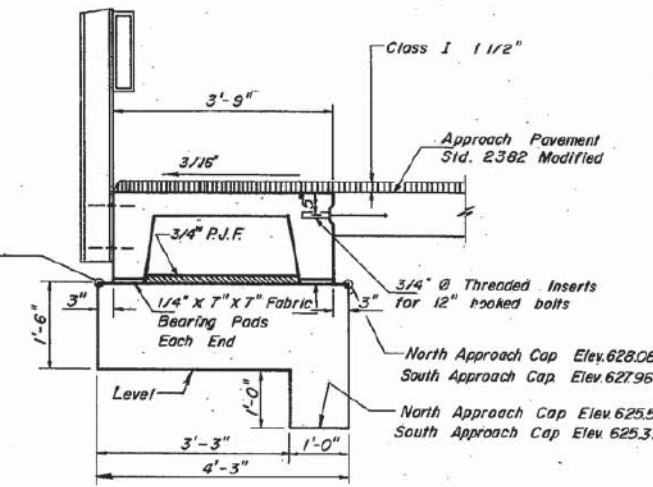
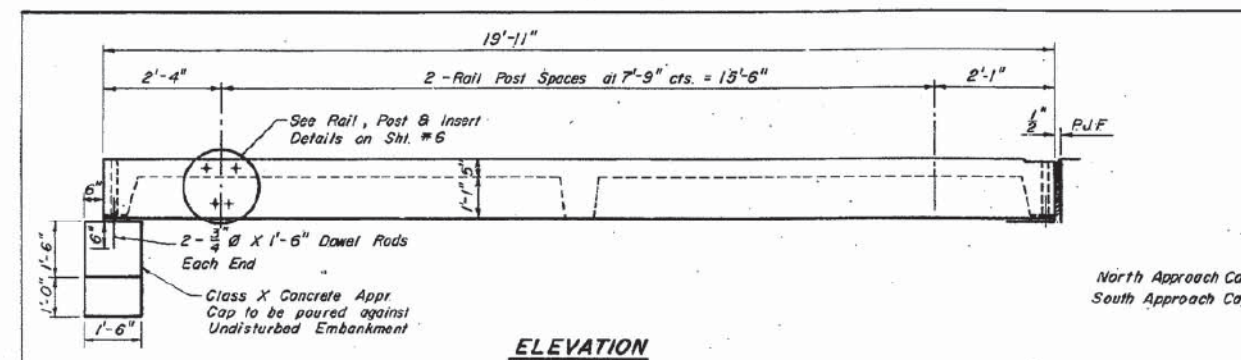


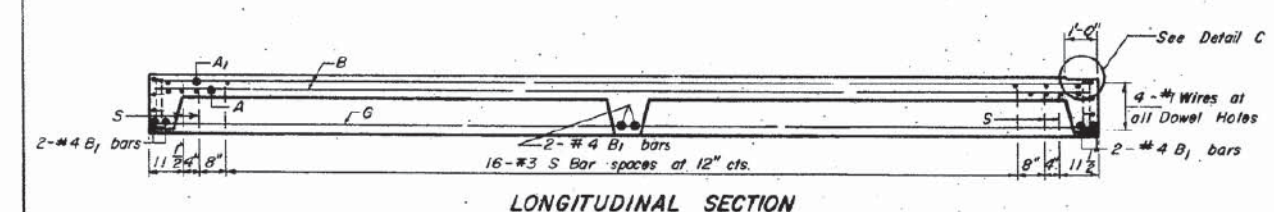
ROUTE NO.	SECTION	LEVEE	TOTAL SHEETS	SHEET NO.
200	141B	WHITESIDE	16	9
9 SHEETS				



**BAR LIST - ONE UNIT**

Reinforcement to be cast into slab

Bar	No.	Size	Length	Shape
A	51	#4	3'-5"	
A1	26	#4	4'-0"	
B	10	#4	19'-7"	
B1	6	#4	3'-6"	
S	4	#10	19'-7"	
S	42	#3	3'-4"	

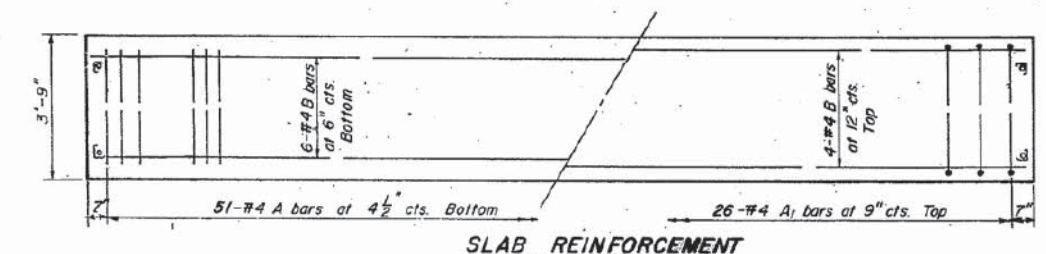
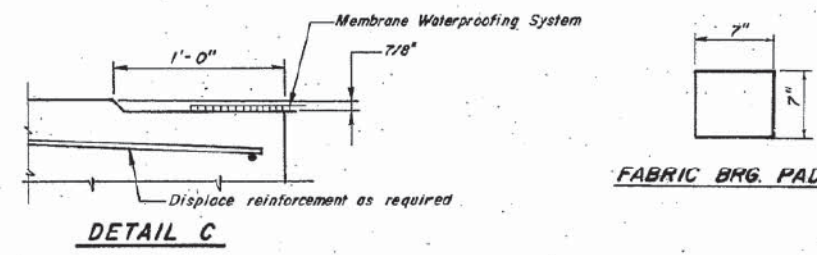


**NOTES**

Unless otherwise approved by the Engineer, lifting loops shall be 1/2" Ø, 6x25 class wire rope with fiber core and shall have a minimum ultimate strength of 21,000 lbs. Loops shall be burned off after slab has been erected.

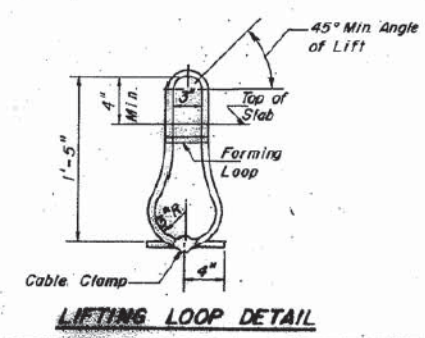
Holes shall be drilled and anchor dowels grouted in place. Cost of reinforcement and accessories cast into the slab unit, bearing pads, furnishing, drilling for, placing and grouting anchor dowels and 3/4" Ø hooked bolts is included in Unit bid price for "Precast Concrete Bridge Slab."

The Precast Concrete Bridge Slab shall be erected and aligned with the exterior face of the exterior Deck Beam after Deck Beams are in final position.



**BILL OF MATERIAL**

Item	Unit	Quan
Precast Concrete Bridge Slab	Sq. Ft.	259
Class X Concrete	Cu. Yds.	1.7



**PRECAST CONCRETE BRIDGE SLAB**

F.A.S. RTE. 200 (ILL. 172)  
 OVER COUNTY DITCH NO. 1  
 F.A.S. RTE. 200 SECTION 141 BR  
 WHITESIDE COUNTY  
 STA. 87+ 82.00

**DONOHUE**  
 ENGINEERS & ARCHITECTS

DESIGN	DESIGN CHKD.	DRAWN	CHECKED
BY: R.D.Z.	BY: J.T.T.	BY: J.A.R.	BY: L.M.F.
PROJECT NUMBER 11310.201			

**REVISIONS**

NAME	DATE