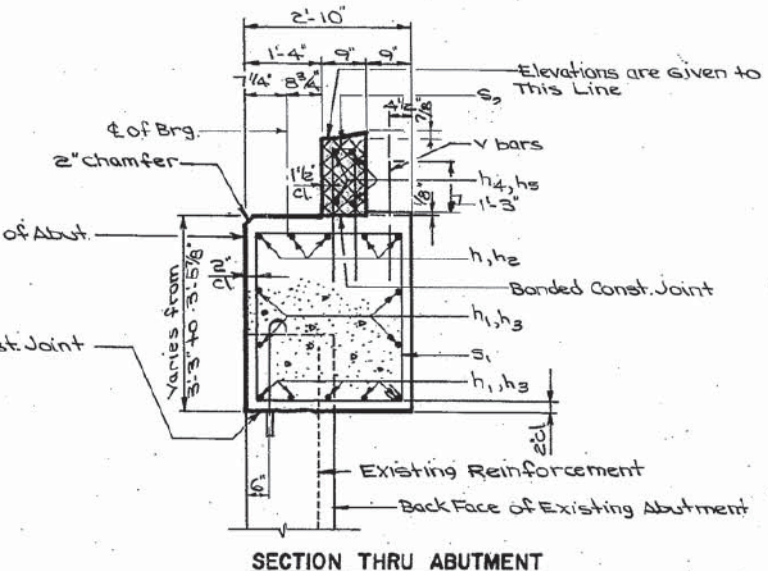
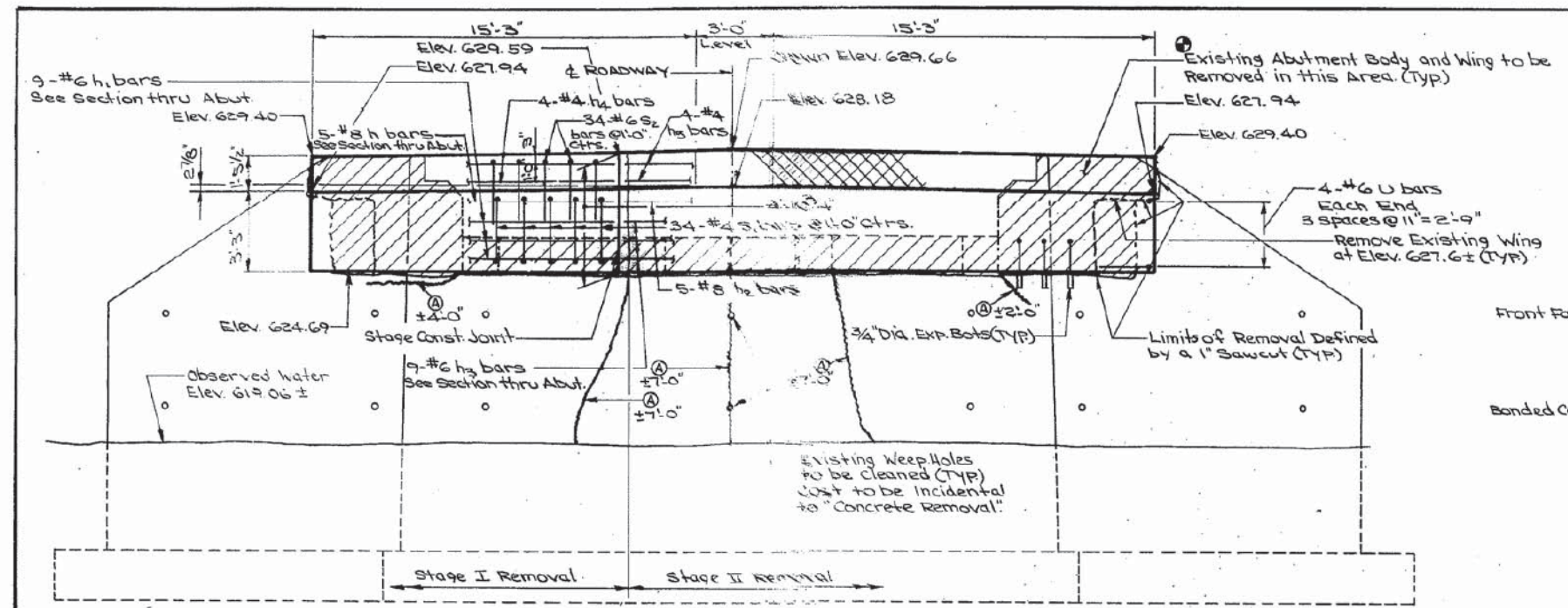


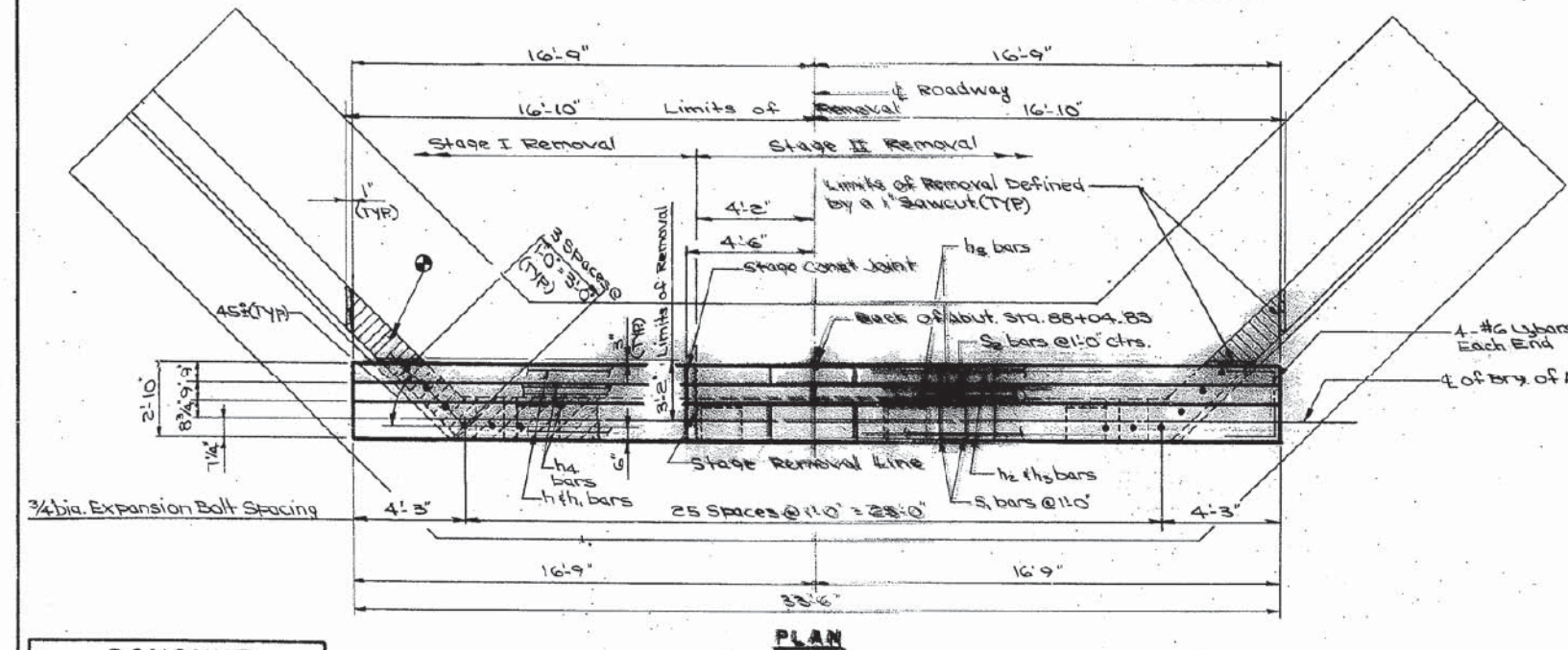
PROJECT NO.	SECTION	COUNTY	TOTAL SHEETS	SHEET NO.
F.A.S. 200	141B-2	WHITESIDE	16	13
9 SHEETS				



ELEVATION
(Looking South)

- Ⓐ Existing Cracks - Clean Area Thoroughly and Seal with Epoxy Sealant.
- ⓧ Cross hatched areas to be poured after beams have been erected and joints grouted.

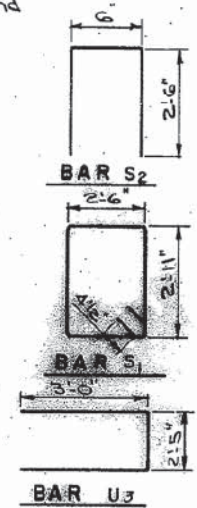
Notes:
Reinforcement extending into removed area shall be cleaned and incorporated into new construction.
Expansion bolts shall be anchored in sound concrete.
All edges shall have 3/4" chamfer except as noted.
For Reinforcement Splicer: (Notes See sheet 2.)



PLAN

SOUTH ABUTMENT BILL OF MATERIALS

BAR	NUMBER	SIZE	LENGTH	SHAPE
h	5	#8	11'-11"	
h	9	#6	11'-11"	
h ₂	4	#4	11'-11"	
h ₂	5	#8	20'-11"	
h ₂	4	#6	20'-11"	
h ₂	4	#4	20'-11"	
s ₁	24	#4	11'-11"	□
s ₂	24	#4	8'-6"	□
v	2	#2	8'-6"	□
u ₃	5	#6	8'-5"	□
Expansion Bolts	3		EACH	3E
Concrete Removal			C.Y.	5
Clear & Clean			C.Y.	13.3
Reinforcement Bars			Lbs	1620
Epoxy Crack Sealing			L.F.	27



DONOHUE
ENGINEERS & ARCHITECTS

DESIGN	DESIGN CHK'D	DRAWN	CHECKED
BY: PDZ	BY: J.T.T.	BY: J.A.R.	BY: L.N.F.
PROJECT NUMBER 11310.201			

SOUTH ABUTMENT

F.A.S. RTE. 200 (ILL 172)
OVER COUNTY DITCH NO. 1
F.A.S. RTE. 200 SECTION 141 BR
WHITESIDE COUNTY
STA. 87+ 82.00

REVISIONS	
NAME	DATE