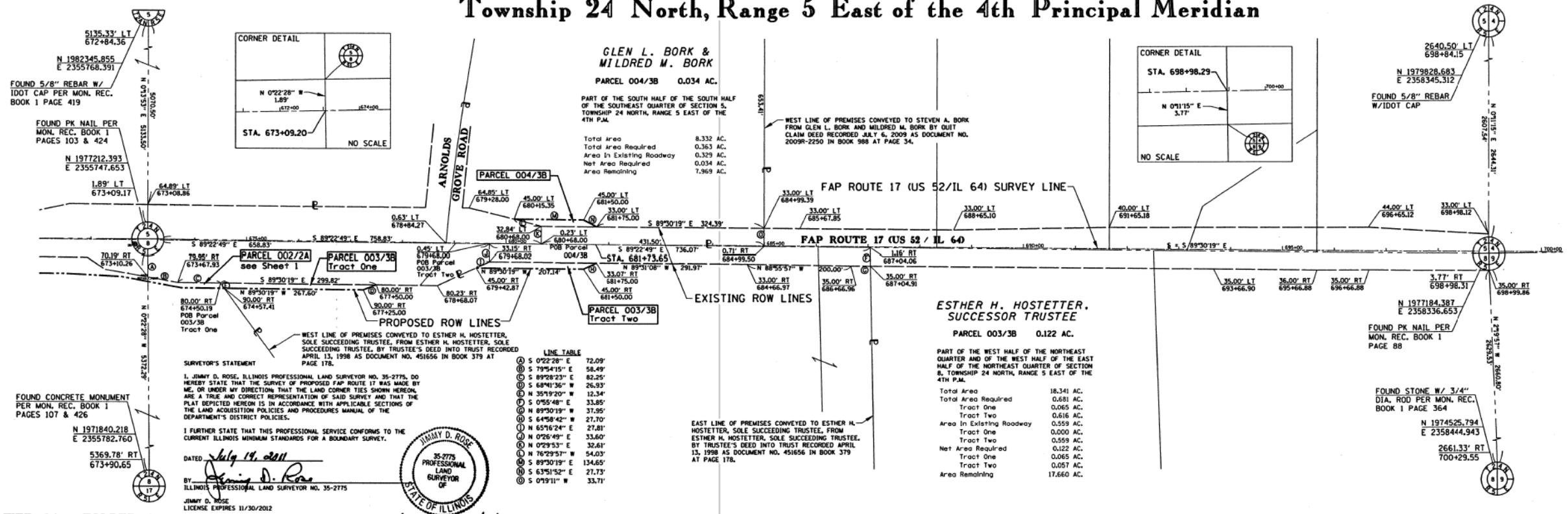


Township 24 North, Range 5 East of the 4th Principal Meridian



FOR THE PURPOSE OF THIS PLAT THE WEST LINE OF THE SOUTHWEST QUARTER OF SECTION 5 HAS BEEN ASSIGNED A BEARING OF N 0°13'3" E.
ALL COORDINATES, BEARINGS AND DISTANCES SHOWN ARE BASED ON SURVEY CONTROL DATA AS PROVIDED BY THE ILLINOIS DEPARTMENT OF TRANSPORTATION DISTRICT #2, AND BY GROUND MEASUREMENTS.
DISTANCES SHOWN ARE GRID DISTANCES. DIVIDE GRID DISTANCE BY 0.99994333 TO OBTAIN GROUND DISTANCE.



SURVEYOR'S STATEMENT
I, JIMMY D. ROSE, ILLINOIS PROFESSIONAL LAND SURVEYOR NO. 35-2775, DO HEREBY STATE THAT THE SURVEY OF PROPOSED F&P ROUTE 17 WAS MADE BY ME, OR UNDER MY DIRECTION, THAT THE LAND CORNER TIES SHOWN HEREON ARE A TRUE AND CORRECT REPRESENTATION OF SAID SURVEY AND THAT THE PLAT DEPICTED HEREON IS IN ACCORDANCE WITH APPLICABLE SECTIONS OF THE LAND ACQUISITION POLICIES AND PROCEDURES MANUAL OF THE DEPARTMENT'S DISTRICT POLICIES.
I FURTHER STATE THAT THIS PROFESSIONAL SERVICE CONFORMS TO THE CURRENT ILLINOIS MINIMUM STANDARDS FOR A BOUNDARY SURVEY.
DATED: July 14, 2011
BY: Jimmy D. Rose
ILLINOIS PROFESSIONAL LAND SURVEYOR NO. 35-2775
JIMMY D. ROSE
35-2775
PROFESSIONAL
LAND
SURVEYOR
OF
STATE OF ILLINOIS
License Expires 11/30/12

PREPARED BY: AMENT, INC.
4715 - 15TH STREET A
MOLINE, IL 61205
309-762-3611
IL PROF DESIGN FIRM NO. 184-002495
STATE OF ILLINOIS
RIGHT OF WAY PLAT
F&P RTE 17 SEC 4BR-5 & 4BR-6
COUNTY OF CARROLL
STA 672+00 TO STA 700+00
SHEET NUMBER 3B
SCALE 1 IN. = 100 FT.
DATE MARCH 26, 2011
JOB NO. R-92-020-09

FILE NAME =	USER NAME = \$USER*	DESIGNED - RAC	REVISED -	STATE OF ILLINOIS DEPARTMENT OF TRANSPORTATION		Zroka Engineering, P.C. 4216 North Hermitage Chicago, IL 60613	RIGHT-OF-WAY PLANS	F.A.P. RTE.	SECTION	COUNTY	TOTAL SHEETS	SHEET NO.
*FILEL\$		DRAWN - LCR	REVISED -					17	4BR-5 & 4BR-6	CARROLL	150	37
PLOT SCALE = \$SCALE*		CHECKED - DAZ	REVISED -					CONTRACT NO. 64D83				
PLOT DATE = \$DATE*		DATE - 06-28-13	REVISED -					ILLINOIS FED. AID PROJECT				

SCALE: SHEET 3 OF 3 SHEETS STA. TO STA.