

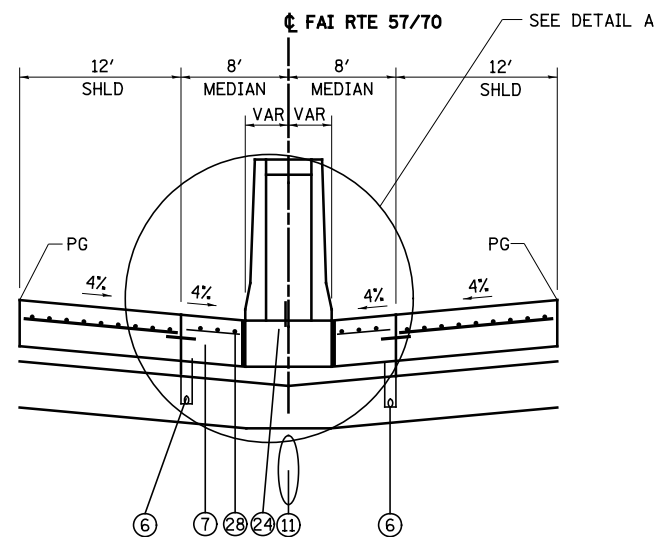
**PROPOSED MAINLINE TANGENT SECTION**

① DOUBLE FACE BARRIER ENDS STA 2289+28.62

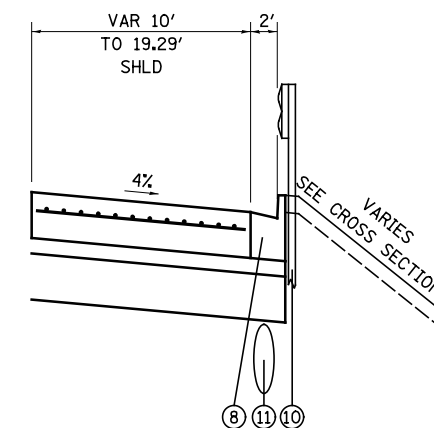
STA 2282+60.26 TO STA 2289+77.65 (FAI RTE 57/70)

② 10' SHOULDER ENDS, RT STA 2286+55.98

③ GUARD RAIL BEGINS, RT STA 2283+35.33



SINGLE FACE BARRIER DETAIL  
STA 2289+51.62 TO STA 2289+82.98



SHOULDER AND CURB & GUTTER DETAIL  
RT STA 2286+75.09 TO STA 2289+82.98

**LEGEND**

- |  |   |
|--|---|
| ① PROPOSED LIME MODIFIED SOIL 12", 24" (SEE SCHEDULE)      | ⑮ PROPOSED COARSE AGGREGATE - COST INCLUDED IN PORTLAND CEMENT CONCRETE SHOULDERS 13"     |
| ② PROPOSED STABILIZED SUB-BASE 4"                          | ⑯ PROPOSED BITUMINOUS MATERIALS (PRIME COAT)  |
| ③ PROPOSED CONTINUOUSLY REINFORCED PCC PAVEMENT 13"        | ⑰ PROPOSED AGGREGATE (PRIME COAT)   |
| ④ PROPOSED PAVEMENT REINFORCEMENT 13"                      | ⑱ PROPOSED LEVELING BINDER (MACHINE METHOD), N105 VARIES 0" TO 6"                         |
| ⑤ PROPOSED AGGREGATE SHOULDERS, TYPE B 6"                  | ⑲ PROPOSED POLYMERIZED HOT-MIX ASPHALT SURFACE COURSE, STONE MATRIX ASPHALT, N80 & VARIES |
| ⑥ PROPOSED PIPE UNDERDRAINS 6"                             | ⑳ PROPOSED HOT-MIX ASPHALT SHOULDERS, 2" & VARIES   |
| ⑦ PROPOSED PORTLAND CEMENT CONCRETE SHOULDERS 13"          | ㉑ PROPOSED CONCRETE MEDIAN, TYPE SM (DOWELLED)  |
| ⑧ PROPOSED COMBINATION CONCRETE CURB & GUTTER, TYPE B-6.24 | ㉒ PROPOSED PORTLAND CEMENT CONCRETE SIDEWALK 4"   |
| ⑨ PROPOSED CONCRETE BARRIER, DOUBLE FACE, 42 INCH HEIGHT   | ㉓ PROPOSED BRIDGE APPROACH SLAB   |
| ⑩ PROPOSED STEEL PLATE BEAM GUARD RAIL, TYPE A             | ㉔ PROPOSED CONCRETE BARRIER BASE  |
| ⑪ PROPOSED STORM SEWERS, CLASS A                           | ㉕ PROPOSED PIPE UNDERDRAIN 4"   |
| ⑫ PROPOSED TOPSOIL 4"                                      | ㉖ PROPOSED AGGREGATE WEDGE SHOULDER, TYPE B   |
| ⑬ PROPOSED PCC PAVEMENT 10" (JOINTED)                      | ㉗ PROPOSED HOT-MIX ASPHALT SHOULDERS, 8"  |
| ⑭ PROPOSED PCC PAVEMENT 9 3/4" (JOINTED)                   | ㉘ PROPOSED PAVEMENT FABRIC  |
|  | ㉙ SLAG MODIFIED CEMENT, 12"   |

SEE LEGEND NOS. ③-④ FOR PAVEMENT COMPOSITION OF SHOULDERS AND DRIVING LANES

NOTES  
PROPOSED SIDE SLOPES/DITCHES  
VARY - SEE CROSS SECTIONS  
  
LIMITS OF PROPOSED TOPSOIL  
VARIES - SEE CROSS SECTIONS

FILE NAME = *FILEL*	USER NAME = *USER*	DESIGNED - JWS	REVISED -	<b>STATE OF ILLINOIS DEPARTMENT OF TRANSPORTATION</b>	<b>PROPOSED TYPICAL SECTIONS MAINLINE FAI ROUTES 57 / 70</b>		F.A.I RTE. 57/70	SECTION (25-4R)	COUNTY EFFINGHAM	TOTAL SHEETS 1760	SHEET NO. 48
	PLOT SCALE = *SCALE*	CHECKED - BRM	REVISED -		SCALE: 1"=50'	SHEET NO. 3 OF 35 SHEETS	STA.	TO STA.	CONTRACT NO. 74295		
	PLOT DATE = *DATE*	DATE - 01/22/09	REVISED -						ILLINOIS FED. AID PROJECT		