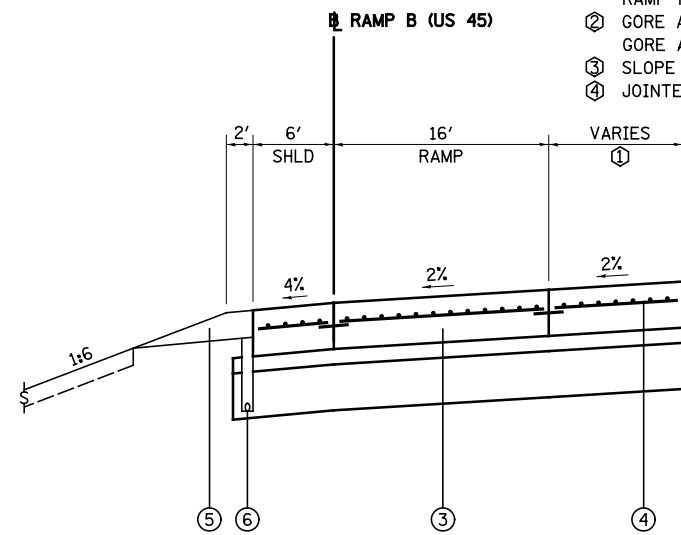


PROPOSED MAINLINE TANGENT SECTION

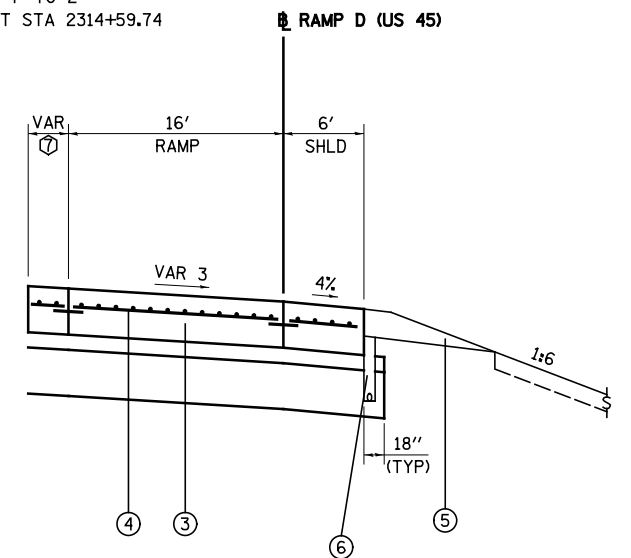
STA 2310+82.77 TO STA 2315+36.98 (FAI RTE 57/70)
 STATION EQUATION - STA 2315+36.98, FAI 57/70 = STA 10+00.00, RAMP B

- ① RAMP RECOVERY AREA, VARIES 9.20' TO 18' TO 1' RAMP RECOVERY AREA ENDS, LT STA 2314+65.92
- ② GORE AREA, VARIES 18.58' TO 6' GORE AREA ENDS, LT STA 2312+22.82
- ③ SLOPE VARIES, SEE CROSS SECTIONS
- ④ JOINTED PAVEMENT ENDS, LT STA 2312+22.82

- ⑤ GORE AREA VARIES, 18' TO 4'
- ⑥ JOINTED PAVEMENT ENDS, RT STA 2313+59.74
- ⑦ GORE AREA, VARIES 4' TO 2' GORE AREA ENDS, RT STA 2314+59.74



RAMP AND RAMP RECOVERY AREA DETAIL
 LT STA 2312+22.82 TO STA 2314+65.92



GORE AND RAMP DETAIL
 RT STA 2313+59.74 TO STA 2315+36.98

LEGEND

- ① PROPOSED LIME MODIFIED SOIL 12"; 24" (SEE SCHEDULE)
- ② PROPOSED STABILIZED SUB-BASE 4"
- ③ PROPOSED CONTINUOUSLY REINFORCED PCC PAVEMENT 13"
- ④ PROPOSED PAVEMENT REINFORCEMENT 13"
- ⑤ PROPOSED AGGREGATE SHOULDERS, TYPE B 6"
- ⑥ PROPOSED PIPE UNDERDRAINS 6"
- ⑦ PROPOSED PORTLAND CEMENT CONCRETE SHOULDERS 13"
- ⑧ PROPOSED COMBINATION CONCRETE CURB & GUTTER, TYPE B-6.24
- ⑨ PROPOSED CONCRETE BARRIER, DOUBLE FACE, 42 INCH HEIGHT
- ⑩ PROPOSED STEEL PLATE BEAM GUARD RAIL, TYPE A
- ⑪ PROPOSED STORM SEWERS, CLASS A
- ⑫ PROPOSED TOPSOIL 4"
- ⑬ PROPOSED PCC PAVEMENT 10" (JOINTED)
- ⑭ PROPOSED PCC PAVEMENT 9 3/4" (JOINTED)
- ⑮ PROPOSED COARSE AGGREGATE - COST INCLUDED IN PORTLAND CEMENT CONCRETE SHOULDERS 13"
- ⑯ PROPOSED BITUMINOUS MATERIALS (PRIME COAT)
- ⑰ PROPOSED AGGREGATE (PRIME COAT)
- ⑱ PROPOSED LEVELING BINDER (MACHINE METHOD), N105 VARIES 0" TO 6"
- ⑲ PROPOSED POLYMERIZED HOT-MIX ASPHALT SURFACE COURSE, STONE MATRIX ASPHALT, N80 & VARIES
- ⑳ PROPOSED HOT-MIX ASPHALT SHOULDERS, 2" & VARIES
- ㉑ PROPOSED CONCRETE MEDIAN, TYPE SM (DOWELLED)
- ㉒ PROPOSED PORTLAND CEMENT CONCRETE SIDEWALK 4"
- ㉓ PROPOSED BRIDGE APPROACH SLAB
- ㉔ PROPOSED CONCRETE BARRIER BASE
- ㉕ PROPOSED PIPE UNDERDRAIN 4"
- ㉖ PROPOSED AGGREGATE WEDGE SHOULDER, TYPE B
- ㉗ PROPOSED HOT-MIX ASPHALT SHOULDERS, 8"
- ㉘ PROPOSED PAVEMENT FABRIC
- ㉙ SLAG MODIFIED CEMENT, 12"

SEE LEGEND NOS. ③-④ FOR PAVEMENT COMPOSITION OF SHOULDERS AND DRIVING LANES

NOTES
 PROPOSED SIDE SLOPES/DITCHES VARY - SEE CROSS SECTIONS
 LIMITS OF PROPOSED TOPSOIL VARIES - SEE CROSS SECTIONS

FILE NAME =	USER NAME = *USER*	DESIGNED - JWS	REVISED -	STATE OF ILLINOIS DEPARTMENT OF TRANSPORTATION	PROPOSED TYPICAL SECTIONS MAINLINE FAI ROUTES 57 / 70		F.A.I. RTE.	SECTION	COUNTY	TOTAL SHEETS	SHEET NO.
FILEL		DRAWN - RCB	REVISED -		57/70	(25-4R)	EFFINGHAM	1760	53		
	PLOT SCALE = *SCALE*	CHECKED - BRM	REVISED -		CONTRACT NO. 74295						
	PLOT DATE = *DATE*	DATE - 01/22/09	REVISED -		SCALE: 1"=50'	SHEET NO. 8 OF 35 SHEETS	STA.	TO STA.	FED. ROAD DIST. NO.	ILLINOIS FED. AID PROJECT	