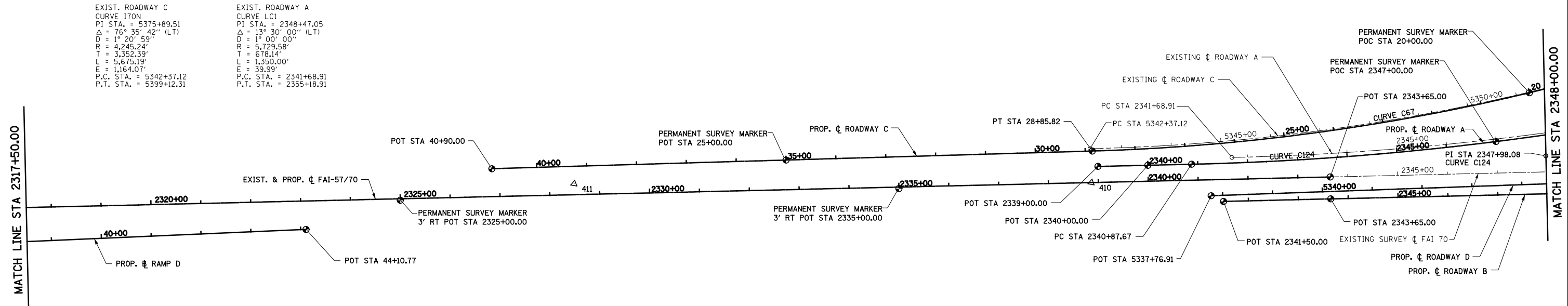


PROP. ROADWAY A
CURVE C124
 PI STA. = 2347+98.08
 $\Delta = 13^\circ 30' 18''$ (LT)
 $D = 0^\circ 57' 18''$
 $R = 6,000.00'$
 $T = 710.41'$
 $L = 1,414.23'$
 $E = 41.91'$
 $e = 3.22\%$
 $T.R. = 45.00'$
 $S.E. RUN = 96.60'$
 P.C. STA. = 2340+87.67
 P.T. STA. = 2355+01.91
 SE ATTAINED STA. 2339+63.27 TO
 STA 2341+19.87 (2.00% TO 3.22%)
 SE REMOVED STA. 2354+69.71 TO
 STA 2355+79.92 (3.22% TO 0.00%)

PROP. ROADWAY C
CURVE C67
 PI STA. = 19+58.36
 $\Delta = 25^\circ 09' 26''$ (RT)
 $D = 1^\circ 20' 02''$
 $R = 4,295.00'$
 $T = 958.36'$
 $L = 1,885.82'$
 $E = 105.62'$
 $e = 4.30\%$
 $T.R. = NA$
 $S.E. RUN = NA$
 P.C. STA. = 10+00.00
 P.T. STA. = 28+85.82
 SE REMOVED STA. 25+97.18
 TO STA 30+89.99 (4.30% TO 1.50%)

EXIST. ROADWAY C
CURVE I70N
 PI STA. = 5375+89.51
 $\Delta = 76^\circ 35' 42''$ (LT)
 $D = 1^\circ 20' 59''$
 $R = 4,245.24'$
 $T = 3,352.39'$
 $L = 5,675.19'$
 $E = 1,164.07'$
 P.C. STA. = 5342+37.12
 P.T. STA. = 5399+12.31

EXIST. ROADWAY A
CURVE LC1
 PI STA. = 2348+47.05
 $\Delta = 13^\circ 30' 00''$ (LT)
 $D = 1^\circ 00' 00''$
 $R = 5,729.58'$
 $T = 678.14'$
 $L = 1,350.00'$
 $E = 39.99'$
 P.C. STA. = 2341+68.91
 P.T. STA. = 2355+18.91



CONTROL POINTS

CONTROL POINT	COORDINATE	
	NORTHING	EASTING
411	903249.41	930740.84
410	903431.80	931761.76

BENCHMARK * 503:

CHISELED SQUARE ON SIGN BASE ON
 S. SIDE OF I-57/70
 STA. 2333+48.00 87.4' RT
 ELEV 598.14

BENCHMARK * 502:

CHISELED SQUARE ON DRAIN S.
 SIDE OF I-57 ON RAMP (N. TRI-LEVEL)
 STA. 2347+50.00 55.6' LT
 ELEV 594.54

BENCHMARK * 501:

CHISELED SQUARE ON LIGHT POLE
 BASE N. SIDE I-57/70
 STA. 2345+08.00 44.0' LT
 ELEV 590.10

EXISTING NORTH TRI LEVEL ROADWAY A

DESCRIPTION	COORDINATE	
	NORTHING	EASTING
PC STA 2341+68.91	903530.29	932030.56
PI STA 2348+47.05	903663.74	932695.44
PT STA 2355+18.91	903948.72	933310.79
PC STA 2356+60.34	904007.71	933438.16
PI STA 2370+35.89	904585.77	934686.35
PT STA 2383+60.34	904534.15	936060.93
PC STA 2385+00.69	904528.89	936201.19
PI STA 2391+78.84	904503.44	936878.85
PT STA 2398+50.69	904636.90	937543.73

GROUND COORDINATES FOR PERMANENT SURVEY MARKERS

DESCRIPTION	COORDINATE	
	NORTHING	EASTING
I-57/70		
POT STA 2325+00.00	903156.21	930403.46
POT STA 2335+00.00	903352.93	931383.93
POT STA 2343+65.00	903526.02	932231.43
US 45 RAMP D		
POT STA 44+10.77	903065.84	930227.51
ROADWAY A		
POT STA 2339+00.00	903465.93	931769.23
POT STA 2340+00.00	903485.60	931867.27
PC STA 2340+87.67	903502.84	931953.23
POC STA 2347+00.00	903653.69	932546.41
ROADWAY B		
POT STA 2341+50.00	903440.59	932029.29
POT STA 2343+65.00	903482.88	932240.09
ROADWAY C		
POC STA 20+00.00	903761.75	932595.39
PT STA 28+85.82	903494.42	931752.51
POT STA 35+00.00	903369.99	931151.07
POT STA 40+90.00	903250.47	930573.30
ROADWAY D		
POT STA 5337+76.91	903447.53	932002.87

PROPOSED US 45 RAMP D

DESCRIPTION	COORDINATE	
	NORTHING	EASTING
POT STA 10+00.00	901919.62	927155.12
PC STA 17+82.53	901991.41	927934.35
PI STA 21+09.24	902021.38	928259.68
PT STA 23+99.65	902278.09	928461.78
PC STA 27+39.67	902545.25	928672.11
PI STA 30+11.02	902758.46	928839.96
PT STA 32+60.93	902817.15	929104.89
POT STA 44+10.77	903065.84	930227.51

PROPOSED NORTH TRI LEVEL ROADWAY A

DESCRIPTION	COORDINATE	
	NORTHING	EASTING
POT STA 2339+00.00	903465.93	931769.23
POT STA 2340+00.00	903485.60	931867.27
PC STA 2340+87.67	903502.84	931953.23
PI STA 2347+98.08	903642.59	932649.76
PT STA 2355+01.91	903941.13	933294.39

PROPOSED NORTH TRI LEVEL ROADWAY C

DESCRIPTION	COORDINATE	
	NORTHING	EASTING
PC STA 10+00.00	904263.26	933457.93
PI STA 19+58.36	903688.57	932691.00
PT STA 28+85.82	903494.42	931752.51
POT STA 40+90.00	903250.47	930573.30

EXISTING SURVEY ϕ FAI 70 EAST

DESCRIPTION	COORDINATE	
	NORTHING	EASTING
POT STA 2295+42.88	902577.46	927503.53
POT STA 2372+66.30	904096.74	935076.05
POT STA 2397+00.73	904575.79	937462.87

EXISTING & PROPOSED FAI-57/70

DESCRIPTION	COORDINATE	
	NORTHING	EASTING
POT STA 2343+65.00	903526.02	932231.43

PROPOSED NORTH TRI LEVEL ROADWAY B

DESCRIPTION	COORDINATE	
	NORTHING	EASTING
POT STA 2341+50.00	903440.59	932029.29
POT STA 2343+65.00	903482.88	932240.09
POT STA 2372+66.30	904053.60	935084.70
POT STA 2397+00.73	904532.65	937471.53

PROPOSED NORTH TRI LEVEL ROADWAY D

DESCRIPTION	COORDINATE	
	NORTHING	EASTING
POT STA 5337+76.91	903447.53	932002.87
PC STA 5354+76.91	903801.91	933665.52
PI STA 5360+57.16	903922.87	934233.02
PT STA 5366+03.90	904337.89	934638.55

EXISTING NORTH TRI LEVEL ROADWAY C

DESCRIPTION	COORDINATE	
	NORTHING	EASTING
PC STA 5342+37.12	903498.25	931747.32
PI STA 5375+89.51	904157.70	935034.21
PT STA 5399+12.31	907507.92	935154.73

PERMANENT SURVEY MARKER ϕ



FILE NAME =	USER NAME = *USER*	DESIGNED - JWS	REVISED -
S:\Projects\03-2007\257-70.dgn\11 Trk.dwg		DRAWN - PDB	REVISED -
	PLOT SCALE = *SCALE*	CHECKED - BRM	REVISED -
	PLOT DATE = *DATE*	DATE - 10-16-08	REVISED -

**STATE OF ILLINOIS
 DEPARTMENT OF TRANSPORTATION**

HORIZONTAL CONTROL, FAI ROUTES 57/70

SCALE: 1"=100' SHEET NO. 5 OF 12 SHEETS STA. 2317+50.00 TO STA. 2348+00.00

F.A.I. RTE.	SECTION	COUNTY	TOTAL SHEETS	SHEET NO.
57/70	(25-4R)	EFFINGHAM	1760	95
CONTRACT NO. 74295				
FED. ROAD DIST. NO. ILLINOIS FED. AID PROJECT				