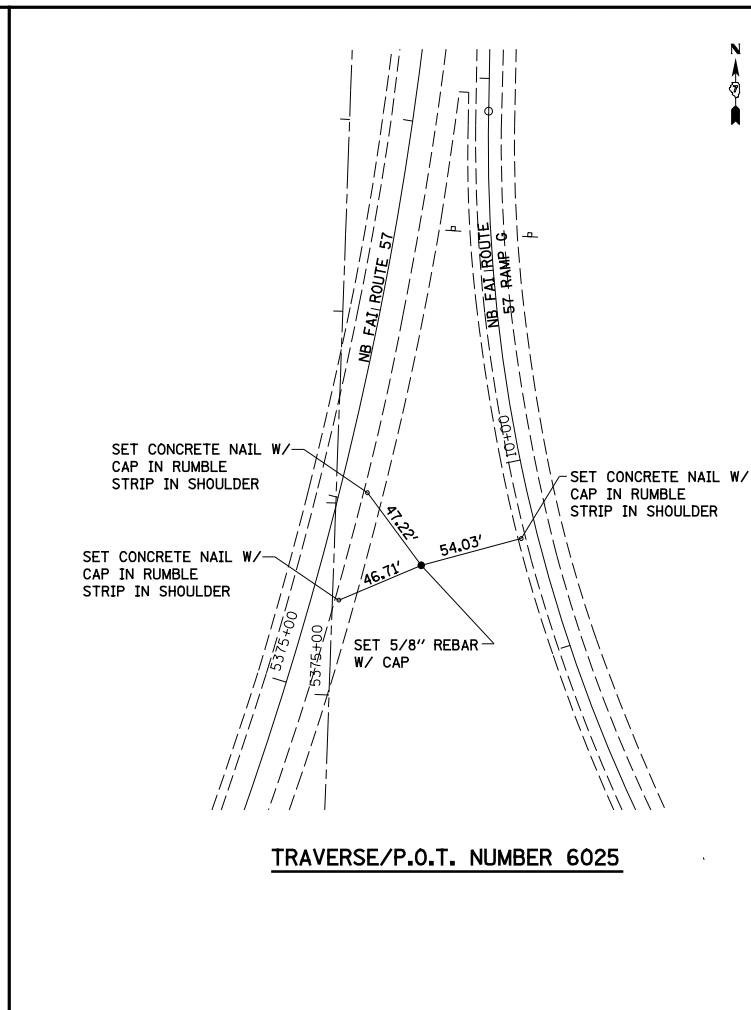
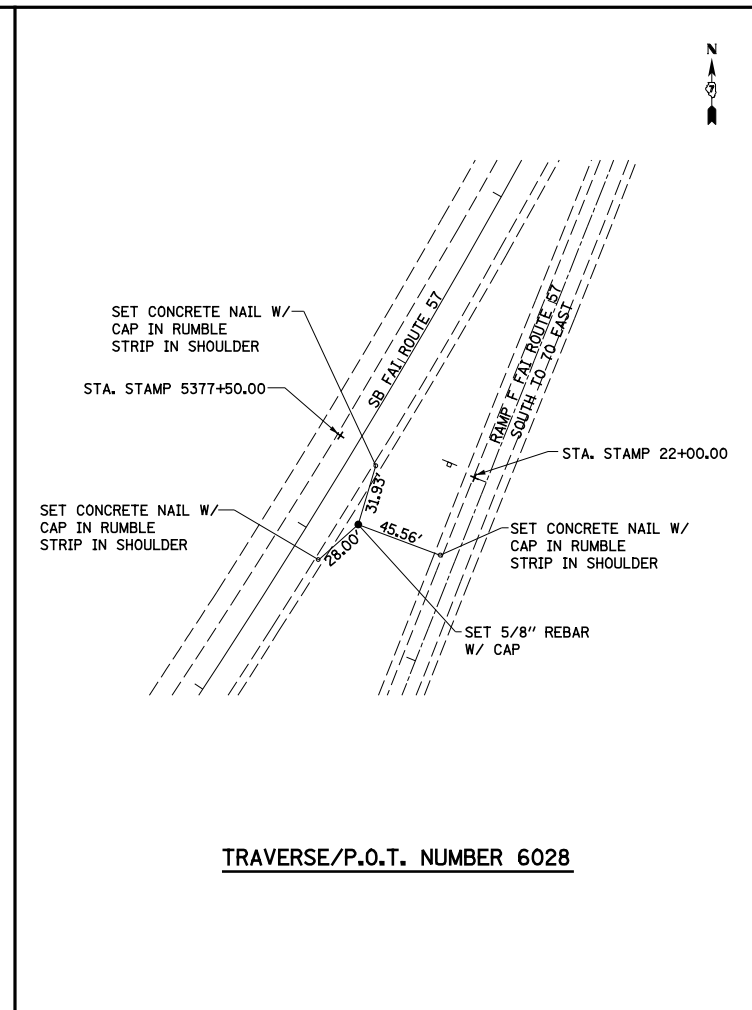


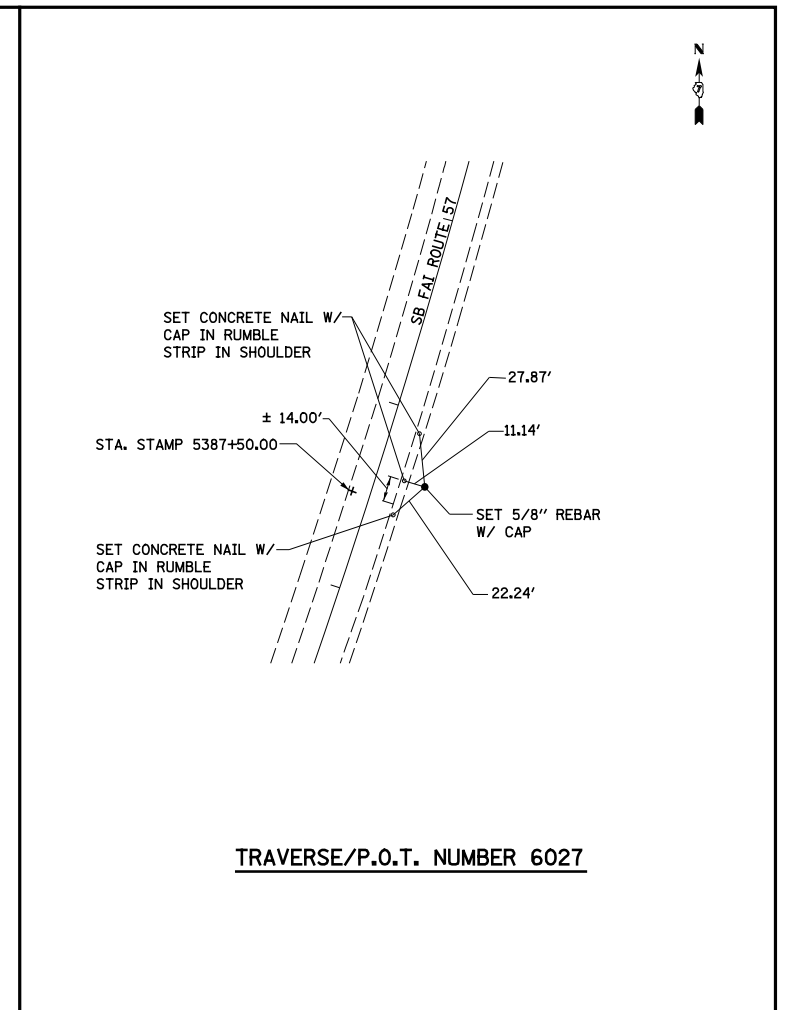
TRAVERSE/P.O.T. NUMBER 6024



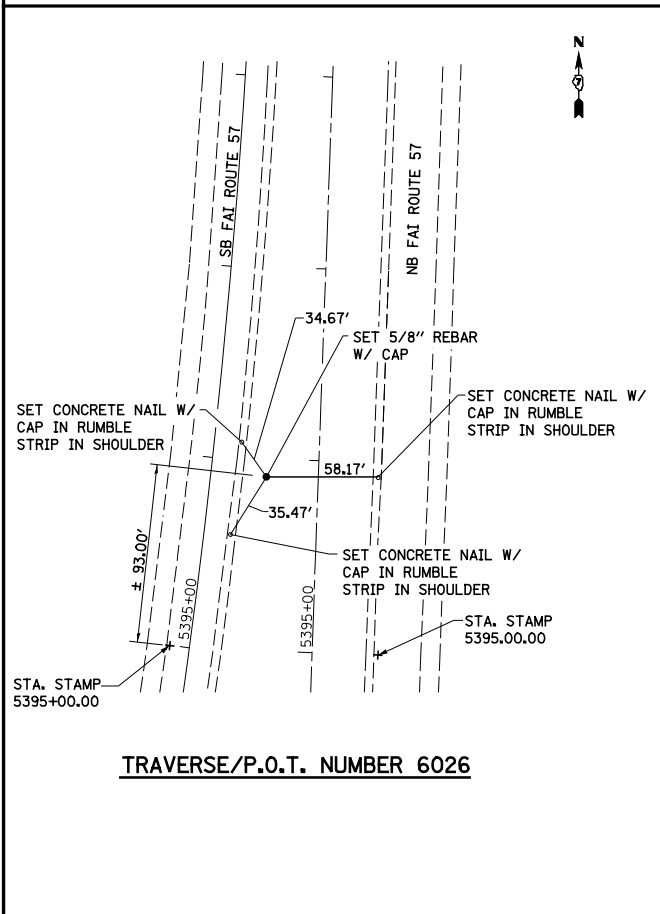
TRAVERSE/P.O.T. NUMBER 6025



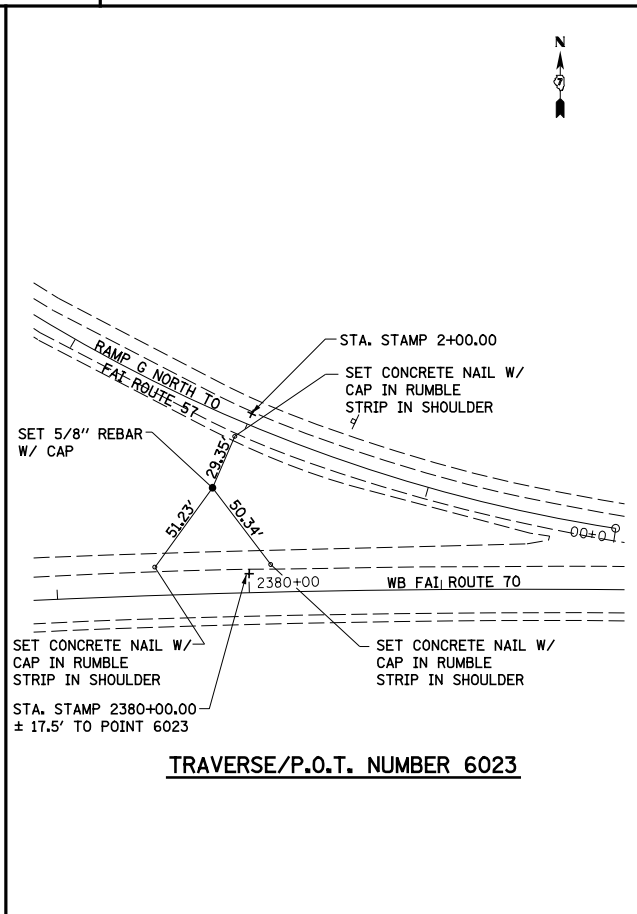
TRAVERSE/P.O.T. NUMBER 6028



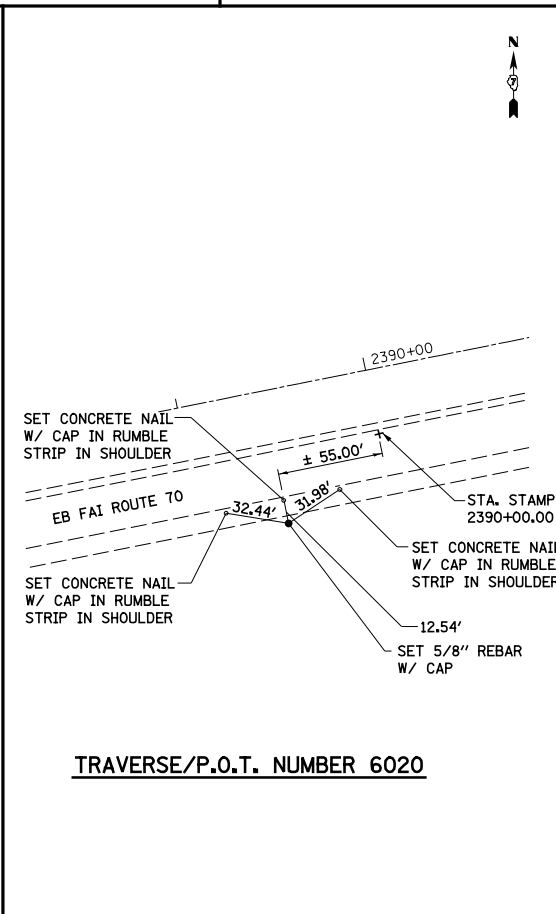
TRAVERSE/P.O.T. NUMBER 6027



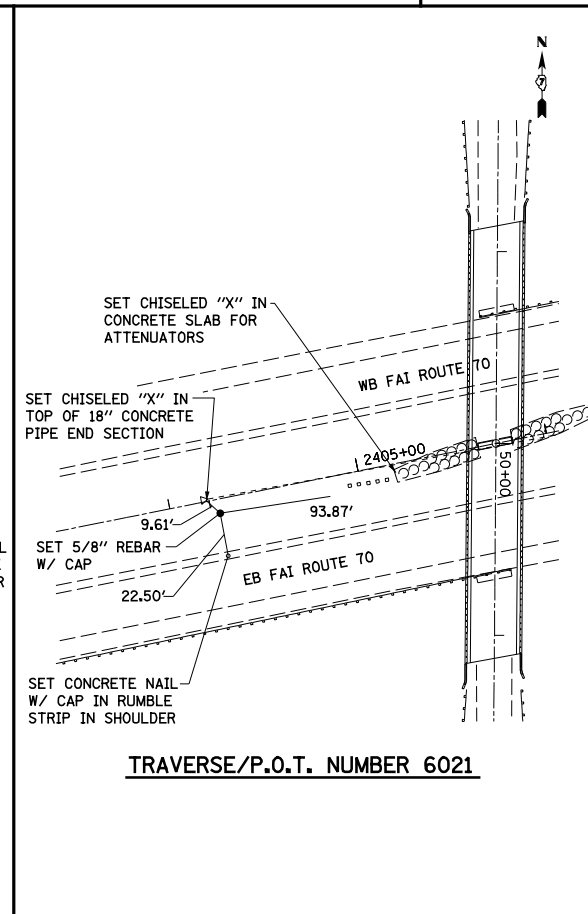
TRAVERSE/P.O.T. NUMBER 6026



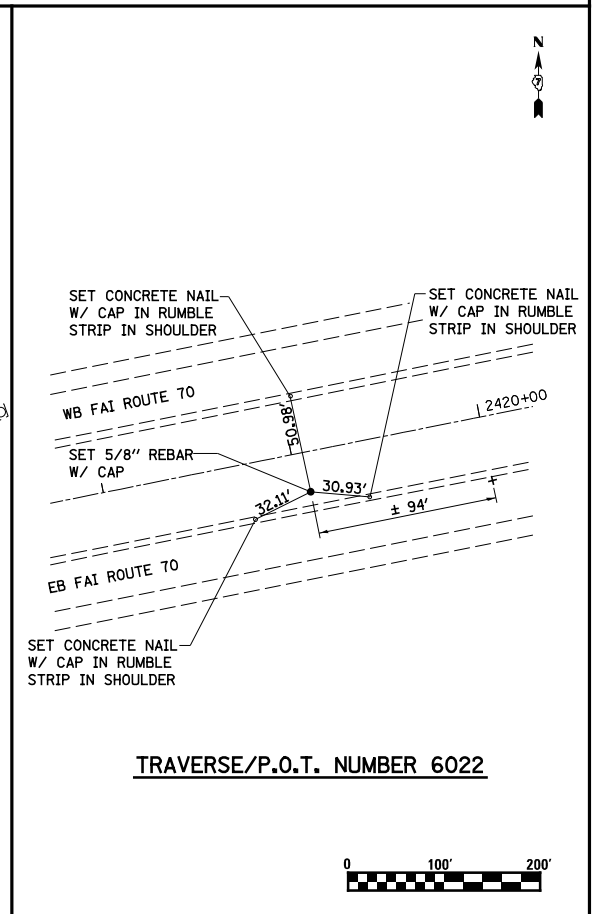
TRAVERSE/P.O.T. NUMBER 6023



TRAVERSE/P.O.T. NUMBER 6020



TRAVERSE/P.O.T. NUMBER 6021



TRAVERSE/P.O.T. NUMBER 6022



FILE NAME = S:\Project\03\000725170.dgn
 USER NAME = *USER*

DESIGNED - JWS
 DRAWN - PDB
 CHECKED - BRM
 DATE - 12-17-08

REVISED -
 REVISED -
 REVISED -
 REVISED -

STATE OF ILLINOIS
 DEPARTMENT OF TRANSPORTATION

TIE POINTS, FAI ROUTES 57/70

SCALE: 1"=100' SHEET NO. 12 OF 12 SHEETS STA. 2407+00.00 TO STA. 2437+00.92

F.A.I. RTE.	SECTION	COUNTY	TOTAL SHEETS	SHEET NO.
57/70	(25-4R)	EFFINGHAM	1760	102
CONTRACT NO. 74295				
FED. ROAD DIST. NO. ILLINOIS FED. AID PROJECT				