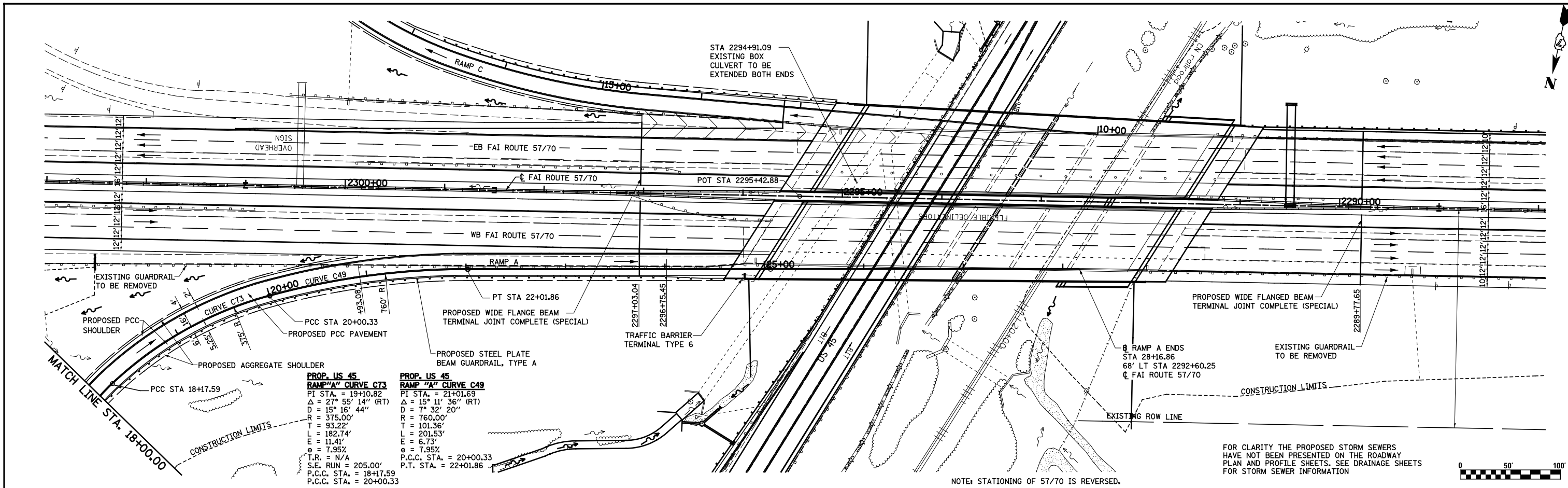


DATE	
BY	
PLAN	SURVEYED
	PLOTTED
	ALIGNED
	CHECKED
	DESIGNED
	NO. _____
	NOTE BOOK
	NO. _____
	FILE NAME
	NO. _____

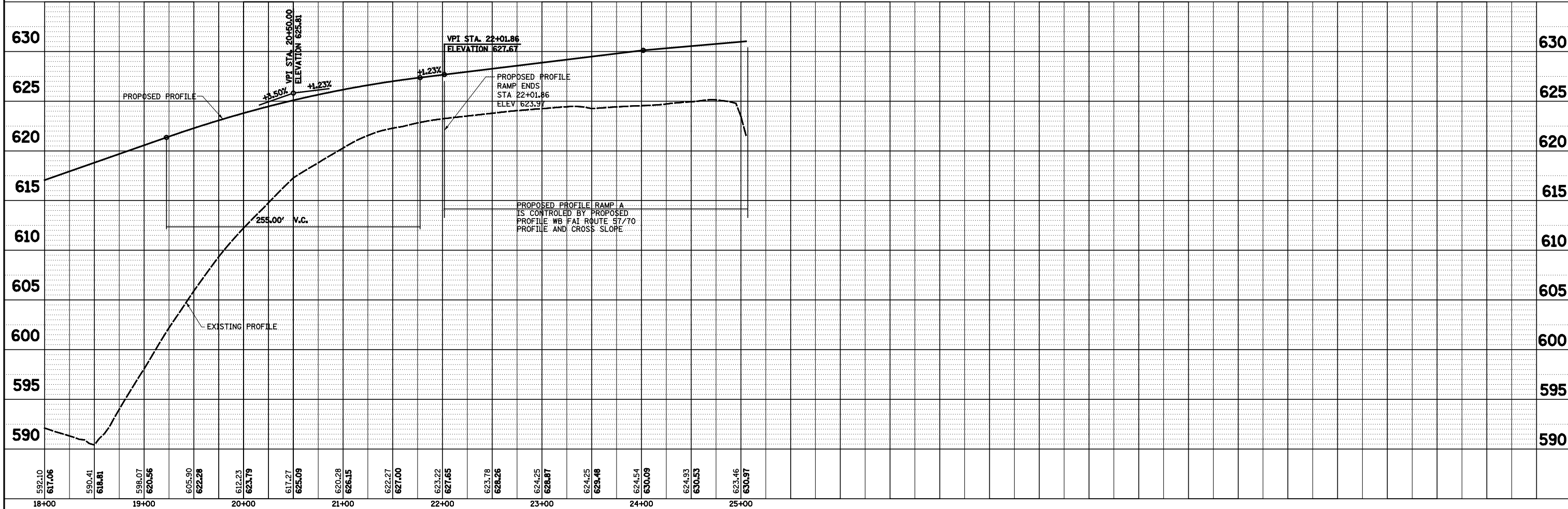
DATE	
BY	
PROFILE	SURVEYED
	PLOTTED
	GRADES CHECKED
	STRUCTURE NOTATIONS CHECKED
	NO. _____
	NOTE BOOK
	NO. _____
	FILE NAME
	NO. _____



PROP. US 45 RAMP "A" CURVE C73
 PI STA. = 19+10.82
 Δ = 27° 55' 14" (RT)
 D = 15° 16' 44"
 R = 375.00'
 T = 93.22'
 L = 182.74'
 E = 11.41'
 θ = 7.95%
 S.E. RUN = 205.00'
 P.C.C. STA. = 18+17.59
 P.C.C. STA. = 20+00.33

PROP. US 45 RAMP "A" CURVE C49
 PI STA. = 21+01.69
 Δ = 15° 11' 36" (RT)
 D = 7° 32' 20"
 R = 760.00'
 T = 101.36'
 L = 201.53'
 E = 6.73'
 θ = 7.95%
 P.C.C. STA. = 20+00.33
 P.T. STA. = 22+01.86

FOR CLARITY THE PROPOSED STORM SEWERS HAVE NOT BEEN PRESENTED ON THE ROADWAY PLAN AND PROFILE SHEETS. SEE DRAINAGE SHEETS FOR STORM SEWER INFORMATION



FILE NAME = S:\Projects\403-00072-57-70\ dgn\N Tr\lv\PP_Ntr1570.dgn	USER NAME = *USER*	DESIGNED - JWS	REVISED -	STATE OF ILLINOIS DEPARTMENT OF TRANSPORTATION	PLAN AND PROFILE, US ROUTE 45 - RAMP A	F.A.I. RTE. 57/70	SECTION (25-4)R	COUNTY EFFINGHAM	TOTAL SHEETS 1760	SHEET NO. 119	
PLOT SCALE = *SCALE*	CHECKED - BRM	REVISED -	SCALE: 1"=50'			SHEET NO. 4 OF 11 SHEETS	STA. 18+00.00 TO STA. 25+00.00	CONTRACT NO. 74295		ILLINOIS FED. AID PROJECT	
PLOT DATE = *DATE*	DATE - 6-5-08	REVISED -									