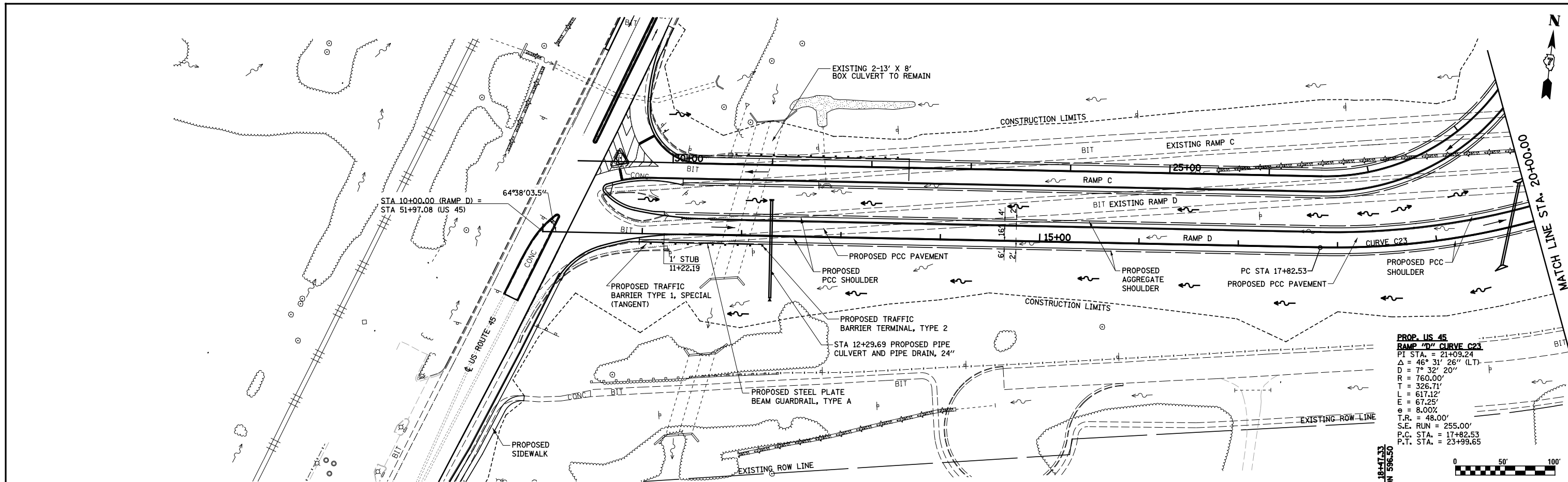
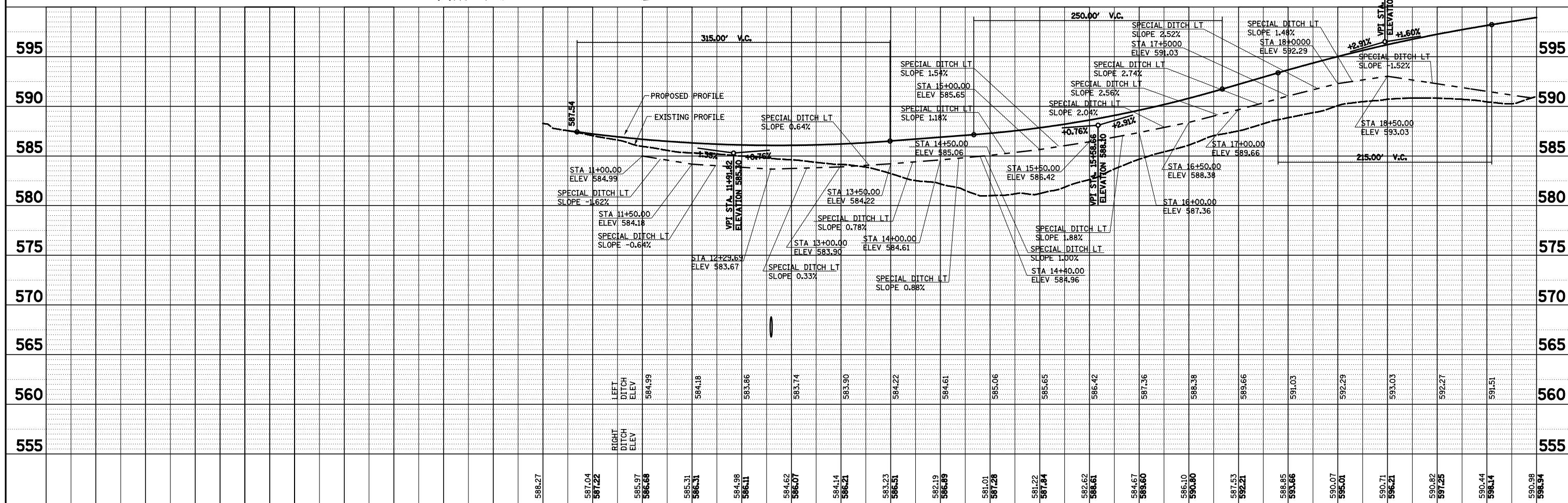


PLAN	SURVEYED	BY	DATE
	PLOTTED		
	ALIGNED		
	CHECKED		
	DESIGNED		
	NO. _____		
	FILE NAME		

PROFILE	SURVEYED	BY	DATE
	PLOTTED		
	GRADES		
	CHECKED		
	STRUCTURE		
	NOTATIONS		
	NO. _____		



**PROP. US 45
RAMP "D" CURVE C23**
 PI STA. = 21+09.24
 Δ = 46° 31' 26" (LT)
 D = 7° 32' 20"
 R = 760.00'
 T = 326.71'
 L = 617.12'
 E = 67.25'
 e = 8.00%
 T.R. = 48.00'
 S.E. RUN = 255.00'
 P.C. STA. = 17+82.53
 P.T. STA. = 23+99.65



FILE NAME =	USER NAME = *USER*	DESIGNED - JWS	REVISED -	STATE OF ILLINOIS DEPARTMENT OF TRANSPORTATION	PLAN AND PROFILE, US ROUTE 45 - RAMP D	F.A.I. RTE.	SECTION	COUNTY	TOTAL SHEETS	SHEET NO.	
S:\Projects\403-00072-57-70\dgn\N Tr\lv\PP_NTR1570.dgn	PLOT SCALE = *SCALE*	DRAWN - PDB	REVISED -			57/70	(25-4R)	EFFINGHAM	1760	124	
PLOT DATE = *DATE*	DATE - 6-5-08	CHECKED - BRM	REVISED -			SCALE: 1"=50'		SHEET NO. 9 OF 11 SHEETS		STA. 10+00.00 TO STA. 20+00.00	
		DATE - 6-5-08	REVISED -			CONTRACT NO. 74295		FED. ROAD DIST. NO. ILLINOIS FED. AID PROJECT			