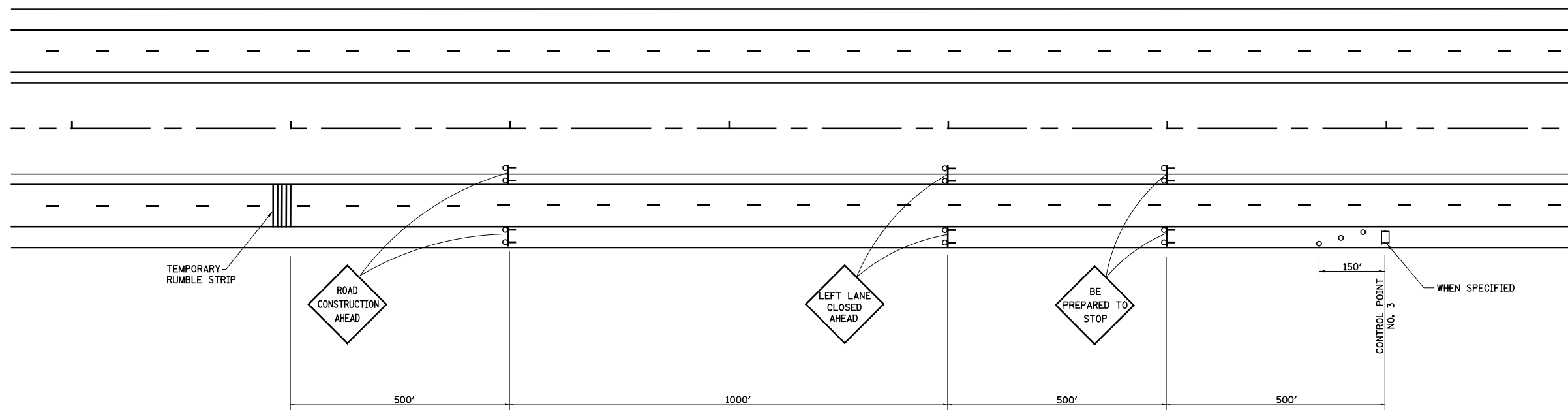


**TRAFFIC CONTROL AND PROTECTION
CASE NO. II**



**TRAFFIC CONTROL AND PROTECTION
CASE NO. III**

LEGEND

- ↑ ARROW BOARD
- ⚡ TYPE III BARRICADE WITH 2 HIGH INTENSITY FLASHING LIGHTS
- ◊ CHANGEABLE MESSAGE SIGN, SPECIAL
- TYPE I OR II BARRICADE WITH MONODIRECTIONAL FLASHING LIGHTS

FOR INFORMATION ONLY

FILE NAME =	USER NAME = \$USER\$	DESIGNED - JWS	REVISED -
S:\Projects\403-00072.57-70\dgn\W Tr\lv\Approach Stop Lane Closure.dgn		DRAWN - PDB	REVISED -
	PLOT SCALE = \$SCALE\$	CHECKED - BRM	REVISED -
	PLOT DATE = \$DATE\$	DATE - 10-19-10	REVISED -

**STATE OF ILLINOIS
DEPARTMENT OF TRANSPORTATION**

**APPROACH TO LANE CLOSURE
FAI ROUTE 57/70**

SCALE: SHEET NO. 4 OF 4 SHEETS STA. TO STA.

F.A.I. RTE.	SECTION	COUNTY	TOTAL SHEETS	SHEET NO.
57/70	(25-4)R	EFFINGHAM	1760	150
FED. ROAD DIST. NO.			ILLINOIS FED. AID PROJECT	
			CONTRACT NO. 74295	