

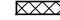






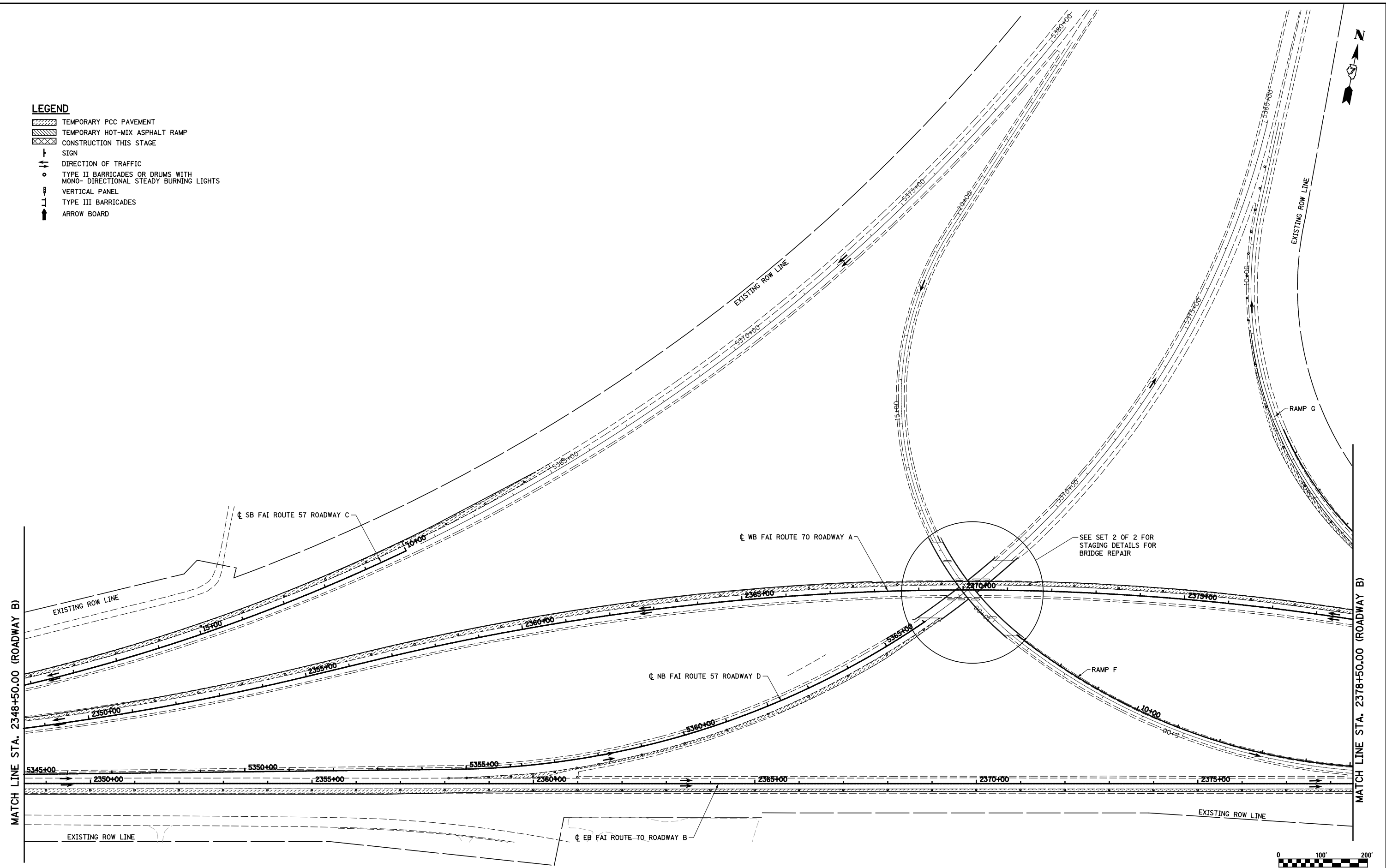


LEGEND

-  TEMPORARY PCC PAVEMENT
-  TEMPORARY HOT-MIX ASPHALT RAMP
-  CONSTRUCTION THIS STAGE
-  SIGN
-  DIRECTION OF TRAFFIC
-  TYPE II BARRICADES OR DRUMS WITH MONO-DIRECTIONAL STEADY BURNING LIGHTS
-  VERTICAL PANEL
-  TYPE III BARRICADES
-  ARROW BOARD



FILE NAME =	USER NAME = \$USER\$	DESIGNED - JWS	REVISED -	STATE OF ILLINOIS DEPARTMENT OF TRANSPORTATION	MAINTENANCE OF TRAFFIC, PRE-STAGE 1, GENERAL LAYOUT			F.A.I. RTE.	SECTION	COUNTY	TOTAL SHEETS	SHEET NO.
		DRAWN - PDB	REVISED -		SCALE: 1"=100'	SHEET NO. 4 OF 18 SHEETS	STA. 2084+00.00 TO STA. 2103+00.00	57/70	(25-4R)	EFFINGHAM	1760	159
		CHECKED - BRM	REVISED -					CONTRACT NO. 74295				
		DATE - 6-25-08	REVISED -					FED. ROAD DIST. NO. ILLINOIS FED. AID PROJECT				