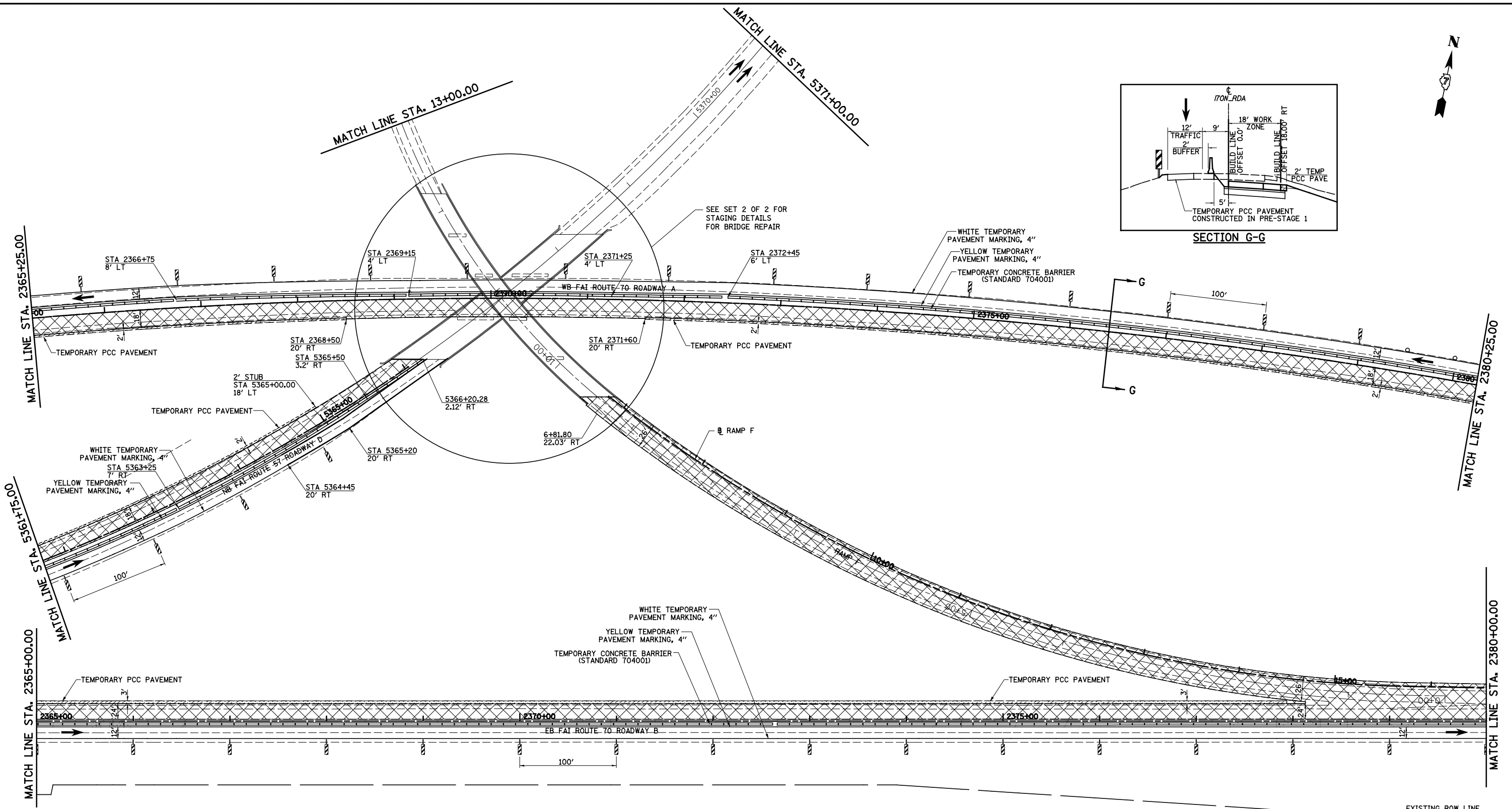


SECTION G-G



LEGEND

- TEMPORARY PCC PAVEMENT
- TEMPORARY HOT-MIX ASPHALT RAMP
- CONSTRUCTION THIS STAGE
- SIGN
- DIRECTION OF TRAFFIC
- DIRECTION INDICATOR BARRICADE WITH STEADY BURN MONODIRECTIONAL LIGHT
- TYPE II BARRICADES OR DRUMS WITH MONO-DIRECTIONAL STEADY BURNING LIGHTS
- VERTICAL PANEL
- TEMPORARY WOOD POLE, 55 FEET, CLASS 4
- TEMPORARY WOOD POLE, 55 FEET, CLASS 4 WITH 250W HPS LUMINAIRE, 45 FEET MOUNTING HEIGHT,
- TYPE III BARRICADES
- ARROW BOARD
- EXISTING HIGH MAST TOWER USED FOR TEMPORARY LIGHTING AND THEN REMOVED



FILE NAME = s:\project\0072.57-70.dgn\15 Trk\1\pik.sld.dgn	USER NAME = #USER#	DESIGNED - JWS	REVISED -	STATE OF ILLINOIS DEPARTMENT OF TRANSPORTATION	MAINTENANCE OF TRAFFIC, STAGE 1, NORTH TRI LEVEL	F.A.I. RTE. 57/70	SECTION (25-4R)	COUNTY EFFINGHAM	TOTAL SHEETS 1760	SHEET NO. 185		
PLOT SCALE = #SCALE#		CHECKED - BRM	REVISED -			SCALE: 1"=50'	SHEET NO. 12 OF 18 SHEETS	STA. 2365+00.00 TO STA. 2380+00.00	CONTRACT NO. 74295			
PLOT DATE = #DATE#		DATE - 8-06-08	REVISED -			FED. ROAD DIST. NO. ILLINOIS FED. AID PROJECT						