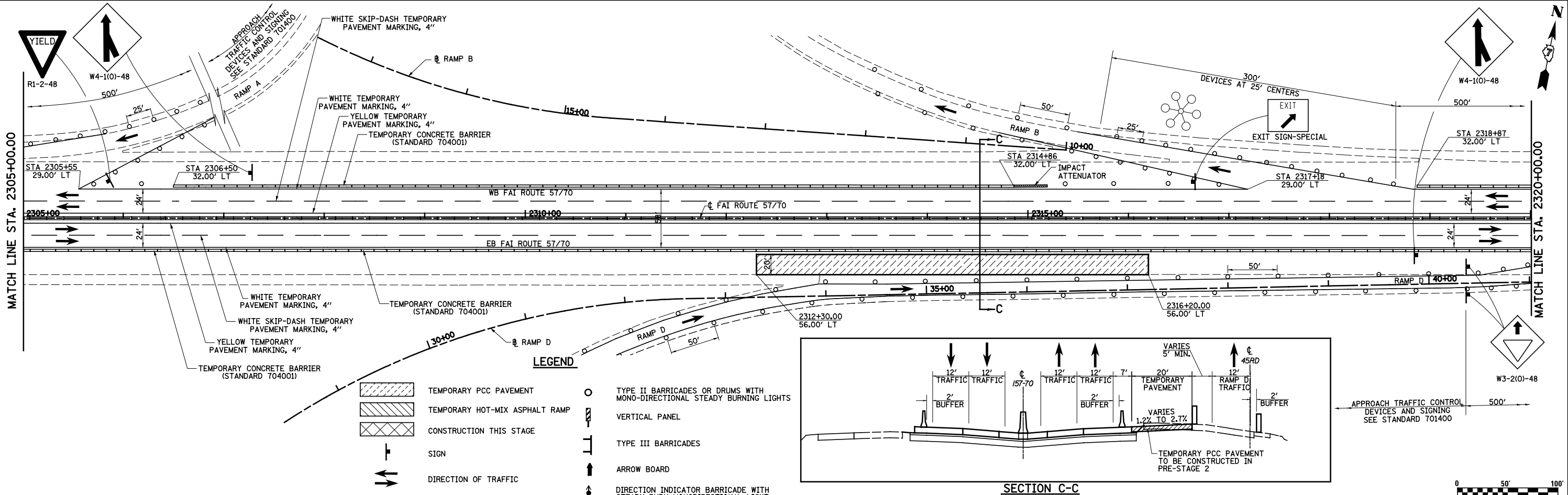
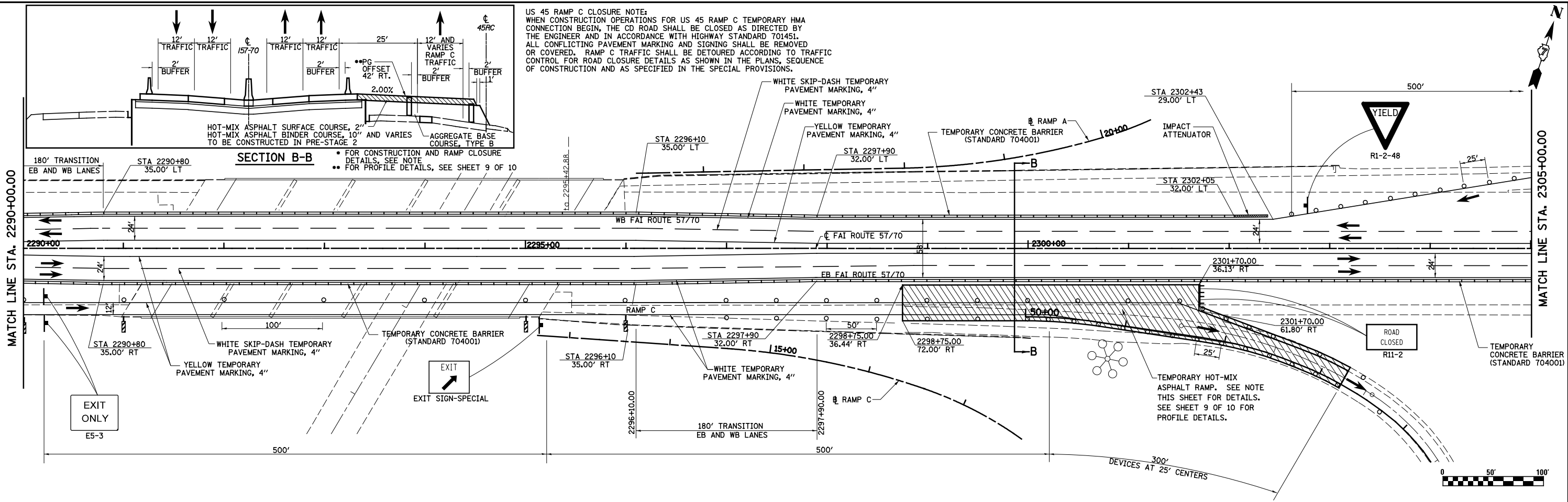


US 45 RAMP C CLOSURE NOTE:
 WHEN CONSTRUCTION OPERATIONS FOR US 45 RAMP C TEMPORARY HMA CONNECTION BEGIN, THE CD ROAD SHALL BE CLOSED AS DIRECTED BY THE ENGINEER AND IN ACCORDANCE WITH HIGHWAY STANDARD 701451. ALL CONFLICTING PAVEMENT MARKING AND SIGNING SHALL BE REMOVED OR COVERED. RAMP C TRAFFIC SHALL BE DETOURED ACCORDING TO TRAFFIC CONTROL FOR ROAD CLOSURE DETAILS AS SHOWN IN THE PLANS, SEQUENCE OF CONSTRUCTION AND AS SPECIFIED IN THE SPECIAL PROVISIONS.



FILE NAME =
 Sn\Projects\403-00072-57-70\dgn\W Tr\ILV\m01_P52.dgn

USER NAME = \$USER\$
 DESIGNED - JWS
 DRAWN - MAB
 PLOT SCALE = \$SCALE\$
 PLOT DATE = \$DATE\$

REVISOR -
 REVISION -
 CHECKED - BRM
 DATE - 3-31-08

STATE OF ILLINOIS
 DEPARTMENT OF TRANSPORTATION

MAINTENANCE OF TRAFFIC, PRE-STAGE 2, NORTH TRI LEVEL
 SCALE: 1"=50'
 SHEET NO. 5 OF 10 SHEETS
 STA. 2290+00.00 TO STA. 2320+00.00

F.A.I. RTE.	SECTION	COUNTY	TOTAL SHEETS	SHEET NO.
57/70	(25-4R)	EFFINGHAM	1736	210
CONTRACT NO. 74295		FED. ROAD DIST. NO. ILLINOIS FED. AID PROJECT		