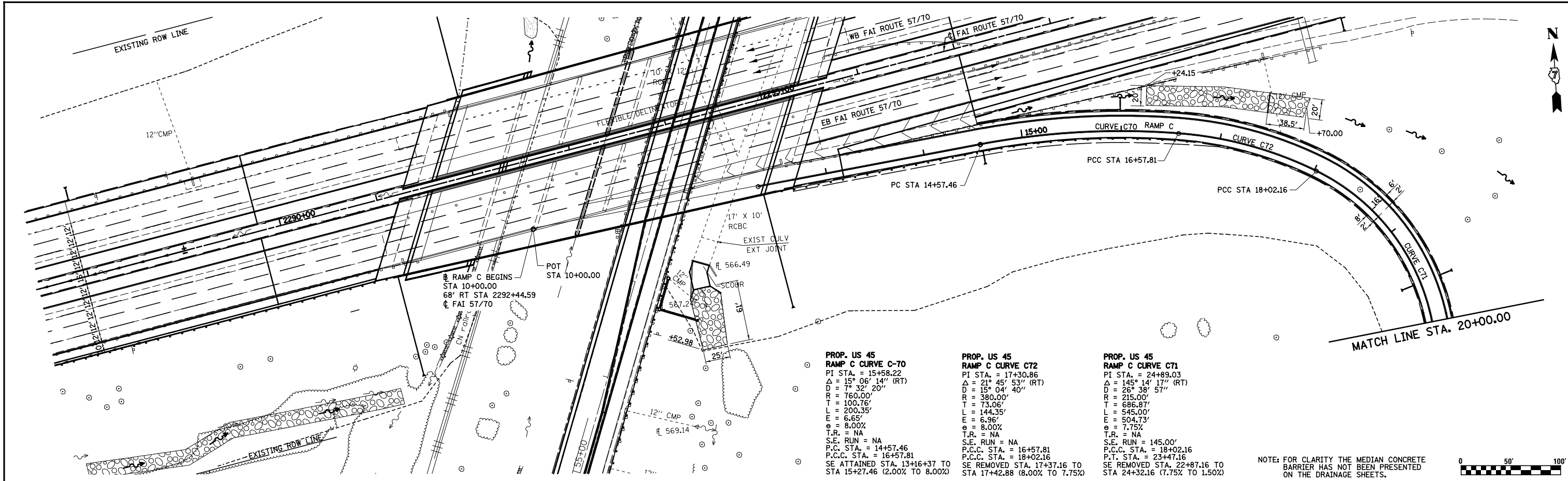


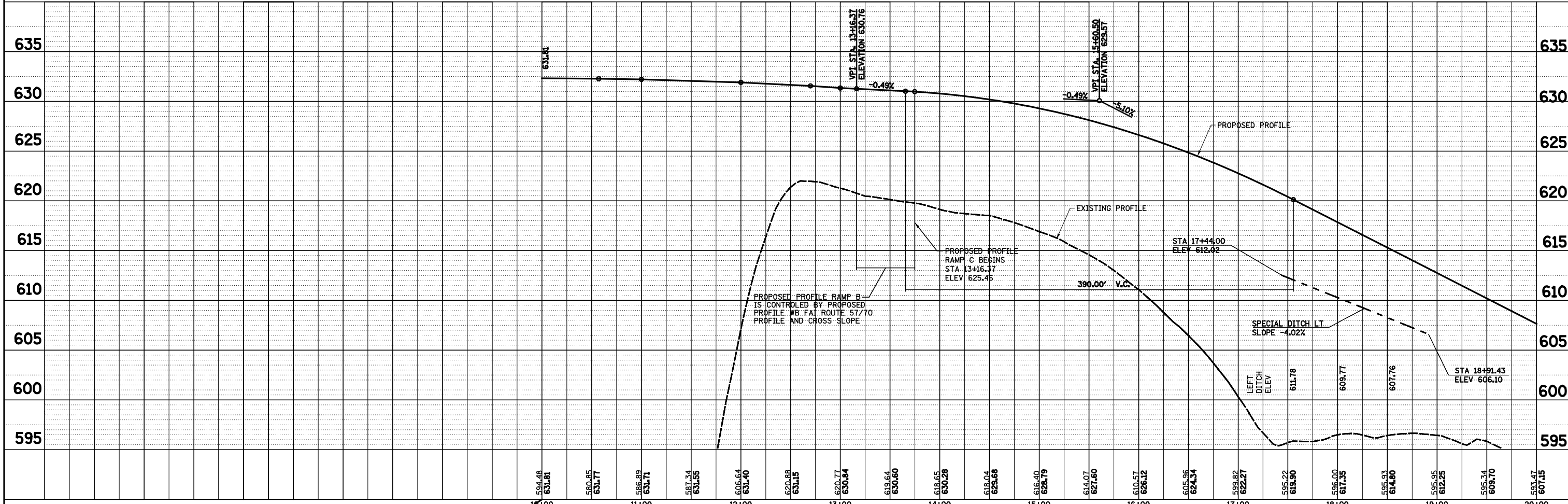
PLAN	SURVEYED	DATE
	PLOTTED	BY
	ALIGNED	CHECKED
	NOTE BOOK	NO.
	FILE NAME	

PROFILE	SURVEYED	DATE
	PLOTTED	BY
	GRADES	CHECKED
	STRUCTURE	NOTATIONS
	NO.	



<b>PROP. US 45</b> <b>RAMP C CURVE C-70</b> PI STA. = 15+58.22 $\Delta = 15^\circ 06' 14''$ (RT) $D = 7^\circ 32' 20''$ $R = 760.00'$ $T = 100.76'$ $L = 200.35'$ $E = 6.65'$ $e = 8.00\%$ $T.R. = NA$ $S.E. RUN = NA$ P.C.C. STA. = 14+57.46 P.C.C. STA. = 16+57.81 SE ATTAINED STA. 13+16+37 TO STA 15+27.46 (2.00% TO 8.00%)	<b>PROP. US 45</b> <b>RAMP C CURVE C72</b> PI STA. = 17+30.86 $\Delta = 21^\circ 45' 53''$ (RT) $D = 15^\circ 04' 40''$ $R = 380.00'$ $T = 73.06'$ $L = 144.35'$ $E = 6.96'$ $e = 8.00\%$ $T.R. = NA$ $S.E. RUN = NA$ P.C.C. STA. = 16+57.81 P.C.C. STA. = 18+02.16 SE REMOVED STA. 17+37.16 TO STA 17+42.88 (8.00% TO 7.75%)	<b>PROP. US 45</b> <b>RAMP C CURVE C71</b> PI STA. = 24+89.03 $\Delta = 145^\circ 14' 17''$ (RT) $D = 26^\circ 38' 57''$ $R = 215.00'$ $T = 686.87'$ $L = 545.00'$ $E = 504.73'$ $e = 7.75\%$ $T.R. = NA$ $S.E. RUN = 145.00'$ P.C.C. STA. = 18+02.16 P.T. STA. = 23+47.16 SE REMOVED STA. 22+87.16 TO STA 24+32.16 (7.75% TO 1.50%)
---	---	--

NOTE: FOR CLARITY THE MEDIAN CONCRETE BARRIER HAS NOT BEEN PRESENTED ON THE DRAINAGE SHEETS.



FILE NAME =	USER NAME = *USER*	DESIGNED - JWS	REVISED -	<b>STATE OF ILLINOIS</b> <b>DEPARTMENT OF TRANSPORTATION</b>	<b>DRAINAGE PLAN AND PROFILE, US ROUTE 45 - RAMP C</b>	F.A.I. RTE.	SECTION	COUNTY	TOTAL SHEETS	SHEET NO.
S:\Projects\403-00072-57-70\dgn\N Tr\lv\dnn PP.NTr\15177.dgn		DRAWN - PDB	REVISED -			57/70	(25-4R)	EFFINGHAM	1760	285
PLOT SCALE = *SCALE*		CHECKED - BRM	REVISED -			CONTRACT NO. 74295				
PLOT DATE = *DATE*		DATE - 3-25-08	REVISED -			SCALE: 1"=50'	SHEET NO. 8 OF 11 SHEETS	STA. 10+00.00 TO STA. 20+00.00	FED. ROAD DIST. NO.	ILLINOIS FED. AID PROJECT