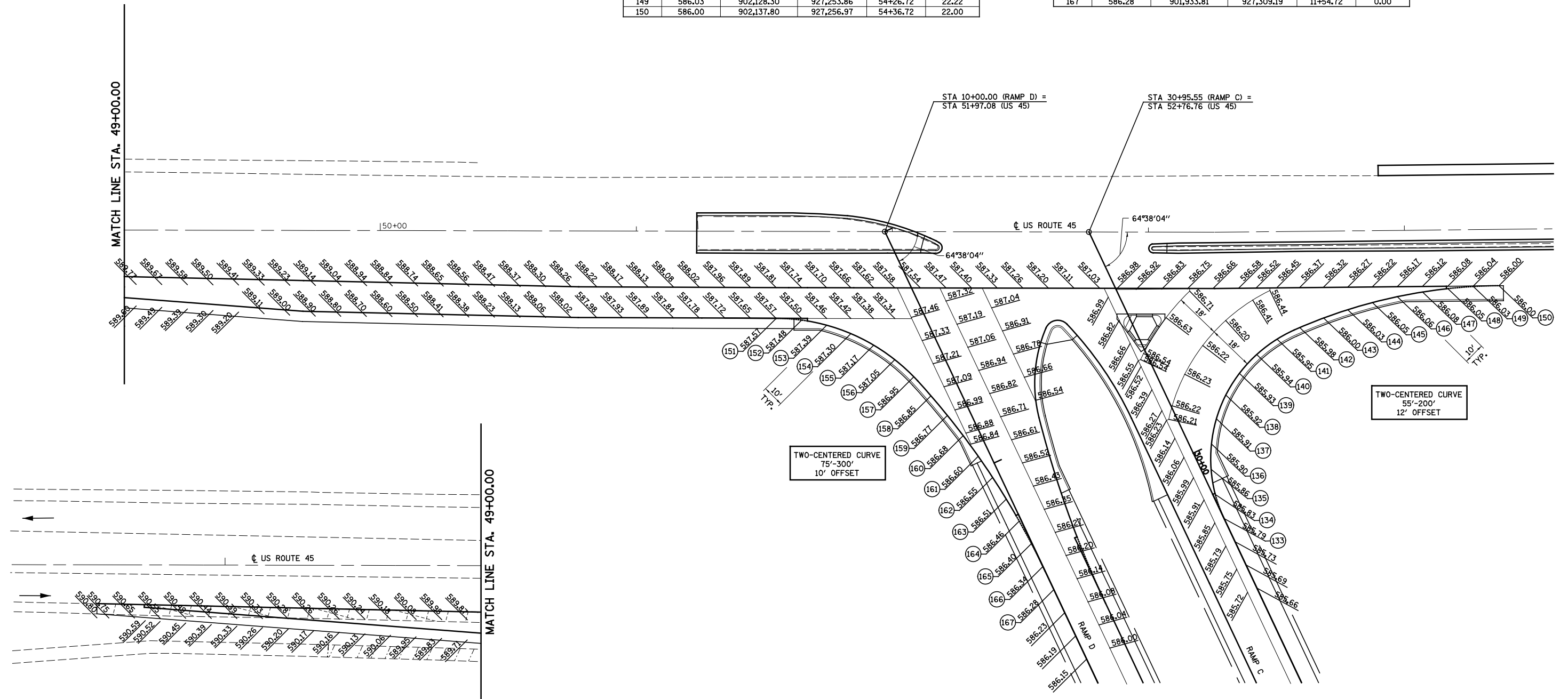


RAMP C - US 45					
POINT	ELEVATION	NORTHING	EASTING	ROADWAY STATION	CL ROADWAY OFFSET
US45 - RAMP C					
133	585.79	902,005.81	927,305.84	29+71.69	0.00
134	585.83	902,005.80	927,295.86	29+81.64	0.91
135	585.86	902,007.60	927,286.03	29+91.26	3.60
136	585.90	902,011.14	927,276.70	30+00.23	7.98
137	585.91	902,016.31	927,268.15	30+08.26	13.92
138	585.92	902,022.94	927,260.69	30+15.09	21.20
139	585.93	902,030.82	927,254.54	30+20.48	29.61
US45					
140	585.94	902,039.67	927,249.93	53+41.82	47.97
141	585.95	902,049.21	927,246.98	53+49.85	42.02
142	585.98	902,059.13	927,245.78	53+58.80	37.59
143	586.00	902,069.12	927,245.44	53+68.11	33.95
144	586.03	902,079.12	927,245.60	53+77.59	30.78
145	586.05	902,089.10	927,246.27	53+87.22	28.09
146	586.06	902,099.03	927,247.43	53+96.98	25.88
147	586.08	902,108.89	927,249.08	54+06.83	24.17
148	586.05	902,118.66	927,251.23	54+16.75	22.95
149	586.03	902,128.30	927,253.86	54+26.72	22.22
150	586.00	902,137.80	927,256.97	54+36.72	22.00

RAMP D - US 45					
POINT	ELEVATION	NORTHING	EASTING	ROADWAY STATION	CL ROADWAY OFFSET
US45					
151	587.57	901,868.12	927,172.48	51+54.69	34.00
152	587.48	901,877.26	927,176.53	51+64.66	34.67
153	587.39	901,885.77	927,181.76	51+74.45	36.65
154	587.30	901,893.52	927,188.08	51+83.90	39.92
155	587.17	901,900.35	927,195.37	51+92.82	44.42
156	587.05	901,906.16	927,203.50	52+01.07	50.06
US45 - RAMP D					
157	586.95	901,910.83	927,212.33	10+56.16	14.00
158	586.85	901,914.58	927,221.60	10+65.74	11.12
159	586.77	901,917.99	927,231.00	10+75.41	8.58
160	586.68	901,921.09	927,240.51	10+85.16	6.37
161	586.60	901,923.87	927,250.12	10+94.98	4.48
162	586.55	901,926.32	927,259.81	11+04.86	2.93
163	586.51	901,928.46	927,269.58	11+14.79	1.70
164	586.46	901,930.26	927,279.41	11+24.74	0.80
165	586.40	901,931.74	927,289.30	11+34.73	0.24
166	586.34	901,932.89	927,299.24	11+44.72	0.01
167	586.28	901,933.81	927,309.19	11+54.72	0.00



FILE NAME =	USER NAME = \$USER\$	DESIGNED - JWS	REVISED -	STATE OF ILLINOIS DEPARTMENT OF TRANSPORTATION	PAVEMENT ELEVATION DETAIL, RAMPS C & D, US ROUTE 45		F.A.I. RTE. 57/70	SECTION (25-4R)	COUNTY EFFINGHAM	TOTAL SHEETS 1760	SHEET NO. 306
S:\Projects\403-00072-57-70\dgn\W Tr\LEV\pav.elev.dwg		DRAWN - PDB	REVISED -		SCALE: 1"=20'	SHEET NO. 2 OF 2 SHEETS	STA. TO STA.	CONTRACT NO. 74295		ILLINOIS FED. AID PROJECT	
		CHECKED - BRM	REVISED -								
		DATE - 7-31-08	REVISED -								