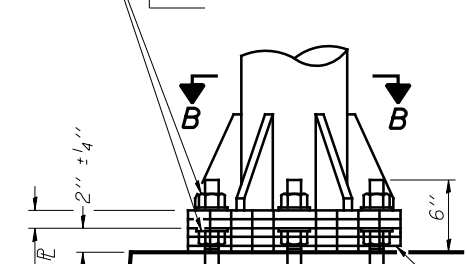
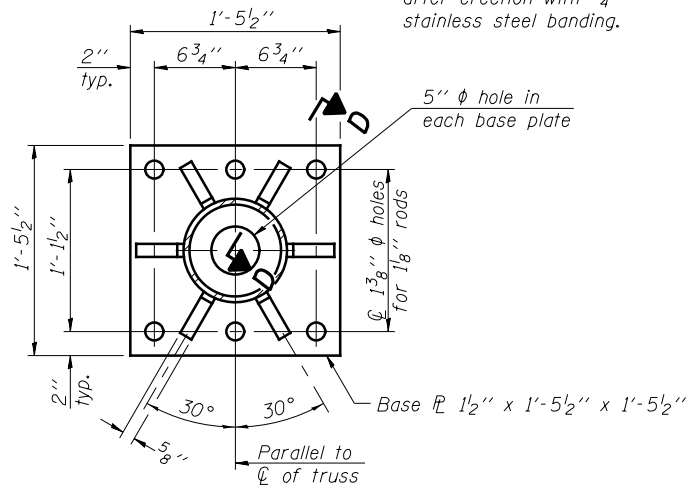


Hexagon locknut and washer (top), leveling nut and washer (bottom). Galvanize per AASHTO M232. Nuts shall each be tightened against base plate with 200 lb.-ft. minimum torque.

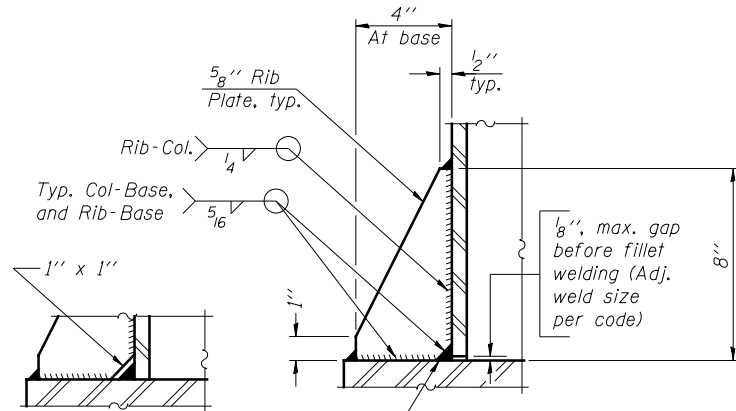


DETAIL B

Ribs shall be cut to fit slope of pipe. Stainless Steel Standard Grade Wire Cloth, 3" wide, 1/4" maximum opening with a minimum wire diameter of AWG. No. 16 with a minimum 2" lap. Secure to base plate after erection with 3/4" stainless steel banding.

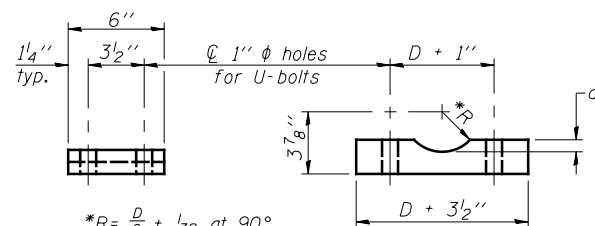


SECTION B-B



SECTION D-D

** Alternate detail if welding col. to base plate first, then snip inside corner of ribs. Terminate weld on rib 1/4" from snip. No snip req'd. at rib inside corner if placed before col. to base plate welding. **

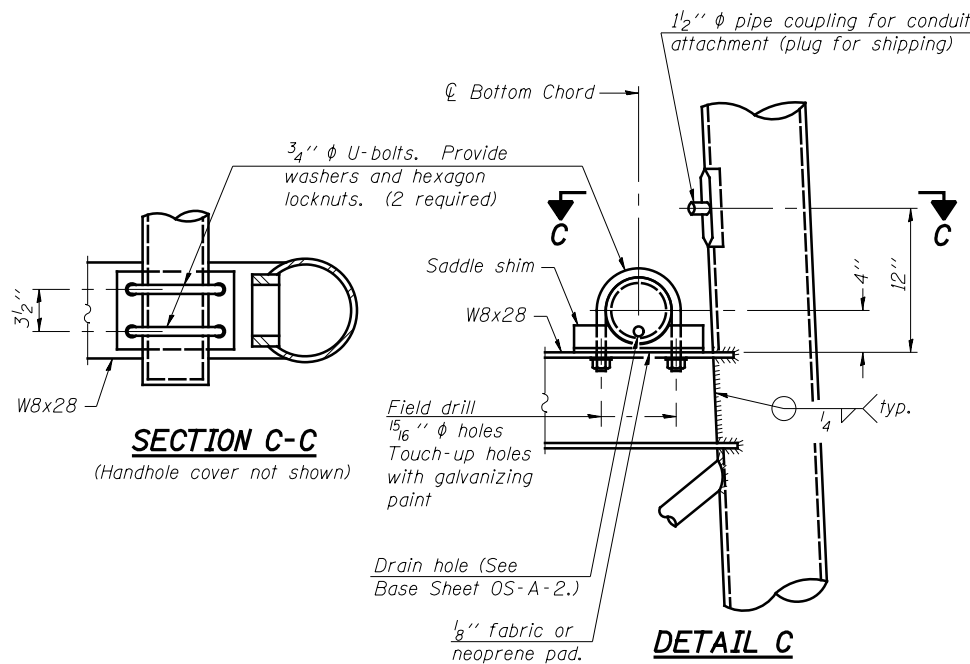


*R = $\frac{D}{2} + \frac{1}{32}$ at 90°
D = Outside Diameter of Chord.

SADDLE SHIM DETAIL

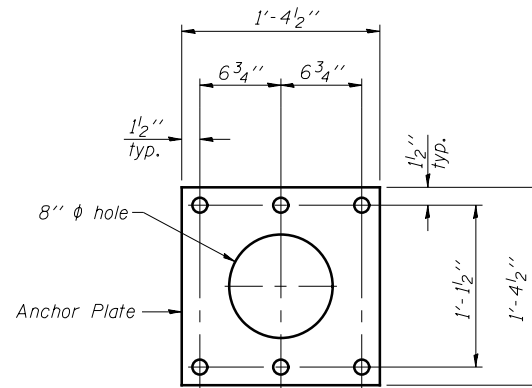
ASTM B26 Alloy 356-F
or
ASTM B209 Alloy 6061-T651
(4 required per sign truss)

Truss Chord Nominal Dia.	a
5"	3/4"
5 1/2"	13/16"
6"	7/8"
6 1/2"	15/16"

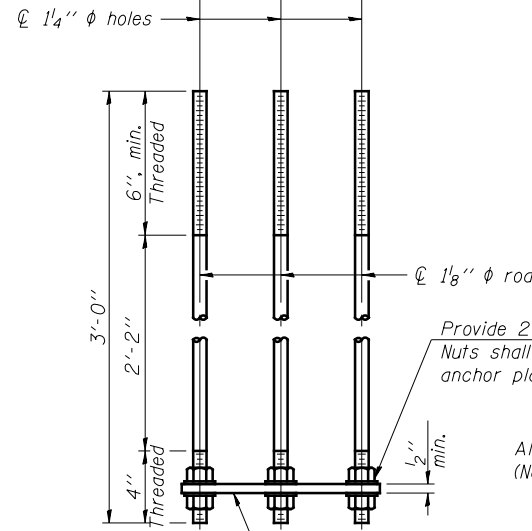


SECTION C-C

DETAIL C



Anchor Plate



ANCHOR ROD DETAIL
Spread Footing Foundation

All Thread = NC (National Coarse)

Anchor rods shall conform to ASTM F1554 Grade 105. Galvanize upper 12" minimum per AASHTO M232. No welding shall be permitted on rods.

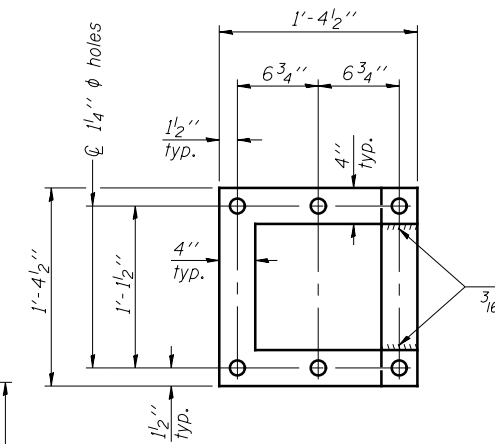
TYPE I-A TRUSS
8" Ø PIPE SUPPORT FRAME DETAILS

All Thread = NC (National Coarse)

All Thread = NC (National Coarse)

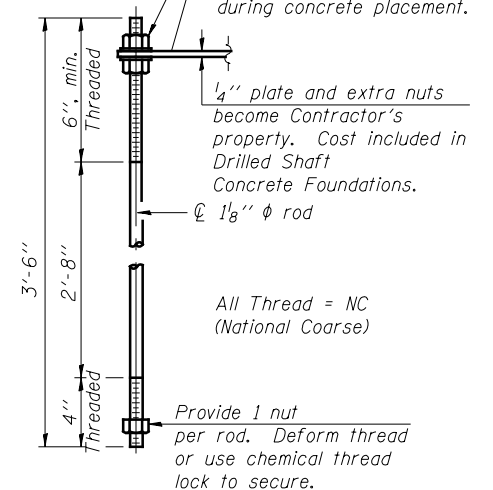
All Thread = NC (National Coarse)

POSITIONING PLATE(S)



Optionally may use four (4) separate bars. Weld to maintain perpendicularity.

At each location, provide 1/4" thick positioning plate(s) and six (6) additional nuts to be used with leveling nuts to maintain anchor bolts position during concrete placement.



ANCHOR ROD DETAIL
Drilled Shaft Foundation

OS-A-4A

6-1-12

FILE NAME =	USER NAME =	DESIGNED - ESW	REVISIONS -
		CHECKED - JWS	REVISIONS -
		DRAWN - PSB	REVISIONS -
		CHECKED - BRM	REVISIONS -

STATE OF ILLINOIS
DEPARTMENT OF TRANSPORTATION

OVERHEAD SIGN STRUCTURES
SUPPORT FRAME DETAILS - ALUMINUM TRUSS

SHEET NO. 27 OF 53 SHEETS

F.A.I. RTE.	SECTION	COUNTY	TOTAL SHEETS	SHEET NO.
57/70	(25-4R)	EFFINGHAM	1760	414
CONTRACT NO. 74295				

ILLINOIS FED. AID PROJECT