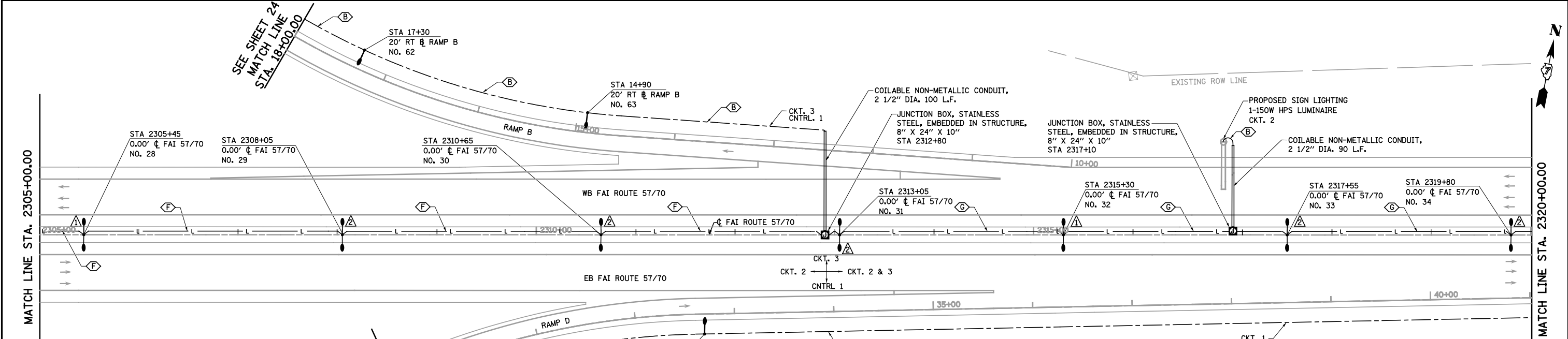


NOTES:  
 1. POLE MOUNTED ON BRIDGE PARAPET WALL  
 SEE STRUCTURAL PLANS AND BRIDGE  
 CROSSING DETAILS.



**LEGEND**

- EXISTING LIGHTING UNIT, TWIN
- PROPOSED LIGHTING UNIT, 45 FT ALUMINUM POLE, TWIN 8 FT DAVIT ARM, (2) 400W HPS LUMINAIRES, M-C-3
- PROPOSED LIGHTING UNIT, 50 FT ALUMINUM POLE, 15 FT DAVIT ARM, 400W HPS LUMINAIRE, M-C-3
- EXISTING LIGHTING CONTROLLER
- PROPOSED LIGHTING CONTROLLER
- SERVICE INSTALLATION

- COMBINATION LIGHTING UNIT, 45 FT MH, 15 FT MAST ARM, 400 HPS LUMINAIRE, PHOTO-CELL CONTROL, M-C-3
- PROPOSED LIGHTING UNIT, 50 FT ALUMINUM POLE, TWIN 15 FT DAVIT ARM, (2) 400W HPS LUMINAIRES, M-C-3

- JUNCTION BOX, STAINLESS STEEL, ATTACHED TO STRUCTURE OR EMBEDDED IN STRUCTURE, SIZE AS NOTED
- PROPOSED UNIT DUCT, SIZE AS NOTED
- PROPOSED ELECTRIC CABLE IN CONDUIT, SIZE AS NOTED
- PROPOSED UNDERGROUND COILABLE NON-METALLIC CONDUIT, SIZE AS NOTED
- EXISTING UNIT DUCT OR CABLE IN CONDUIT

**CABLE / CONDUIT SCHEDULE**

- UNIT DUCT, 600V, 2-1C NO. 8, 1/C NO. 8 GROUND, (XLP-TYPE USE), 3/4" DIA. POLYETHYLENE
- UNIT DUCT, 600V, 2-1C NO. 6, 1/C NO. 8 GROUND, (XLP-TYPE USE), 1" DIA. POLYETHYLENE
- UNIT DUCT, 600V, 2-1C NO. 4, 1/C NO. 6 GROUND, (XLP-TYPE USE), 1" DIA. POLYETHYLENE
- ELECTRIC CABLE IN CONDUIT, 600V, (XLP-TYPE USE), 2-1C NO. 8, 1/C NO. 8 GROUND IN 2" DIA. PVC CONDUIT EMBEDDED IN STRUCTURE
- ELECTRIC CABLE IN CONDUIT, 600V, (XLP-TYPE USE), 2-1C NO. 6, 1/C NO. 8 GROUND IN 2" DIA. PVC CONDUIT EMBEDDED IN STRUCTURE
- ELECTRIC CABLE IN CONDUIT, 600V, (XLP-TYPE USE), 2-1C NO. 4, 1/C NO. 6 GROUND IN 2" DIA. PVC CONDUIT EMBEDDED IN STRUCTURE
- ELECTRIC CABLE IN CONDUIT, 600V, (XLP-TYPE USE), 2-1C NO. 6, 2-1/C NO. 4, 1/C NO. 6 GROUND IN 2" DIA. PVC CONDUIT EMBEDDED IN STRUCTURE
- UNIT DUCT, 600V, 2-1C NO. 2, 1/C NO. 4 GROUND, (XLP-TYPE USE), 1 1/4" DIA. POLYETHYLENE
- ELECTRIC CABLE IN CONDUIT, 600V, (XLP-TYPE USE), 2-1C NO. 4, 1/C NO. 6 GROUND IN 2" DIA. PVC CONDUIT EMBEDDED IN STRUCTURE
- ELECTRIC CABLE IN CONDUIT, 600V, (XLP-TYPE USE), 2-1C NO. 6, 2-1/C NO. 4, 1/C NO. 6 GROUND IN 2" DIA. PVC CONDUIT EMBEDDED IN STRUCTURE
- UNIT DUCT, 600V, 2-1C NO. 8, 1/C NO. 8 GROUND, (XLP-TYPE USE), 2" DIA. PVC CONDUIT EMBEDDED IN STRUCTURE
- LIGHT POLE FOUNDATION
- LIGHT POLE FOUNDATION (SPECIAL)