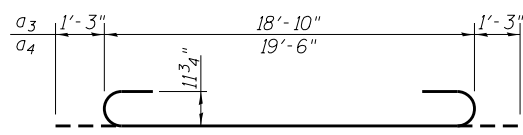
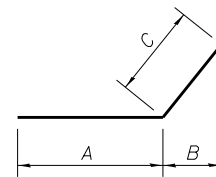


Note - Expansion Bolts shall be 3/4" hooked bolts. Hooked bolts shall extend a minimum of 9" into the new concrete

**EXPANSION BOLT LAYOUT**

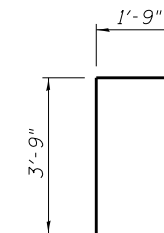


**BARS a3 & a4**

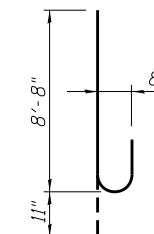


**BARS b, h9, h10, h11 & h12**

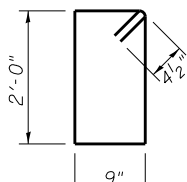
Bar	A	B	C
b	2'-0"	1'-8 3/4"	2'-0"
h9	6'-9 1/2"	11'-6 1/8"	13'-3 1/2"
h10	7'-0"	11'-8 1/4"	13'-6"
h11	11'-7 1/2"	15'-8 3/8"	18'-1 1/2"
h12	11'-10 1/2"	15'-11"	18'-4 1/2"



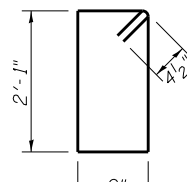
**BAR d**



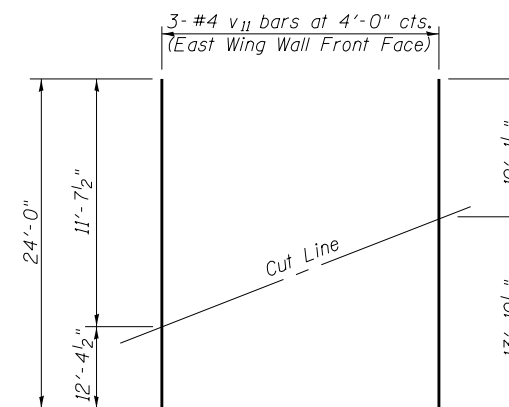
**BAR n1(E)**



**BAR s2**

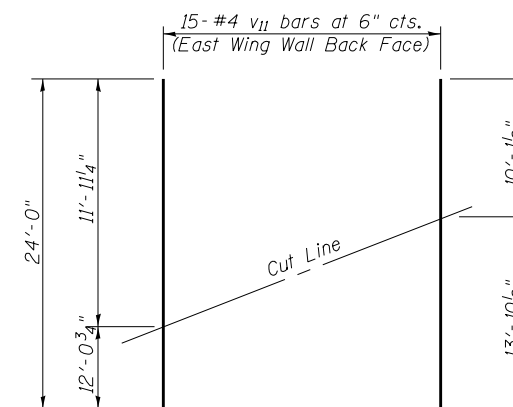


**BAR s3**



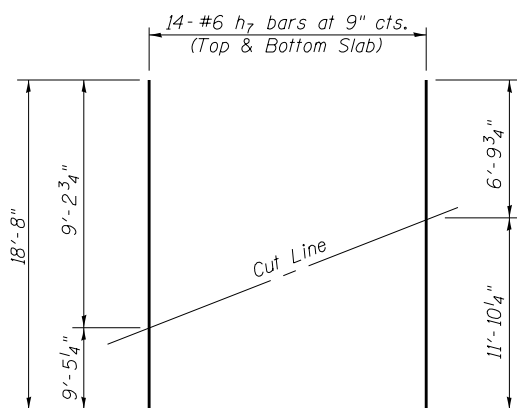
**FIELD CUTTING DIAGRAM**

(v11 bars)



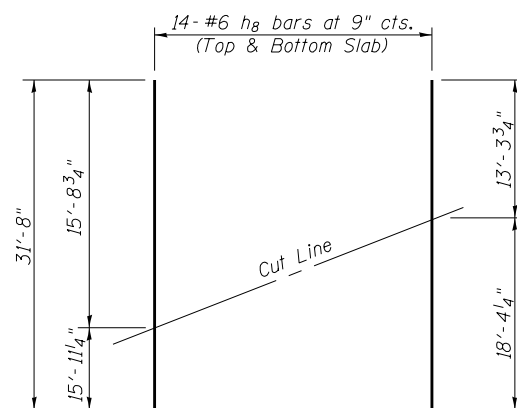
**FIELD CUTTING DIAGRAM**

(v11 bars)



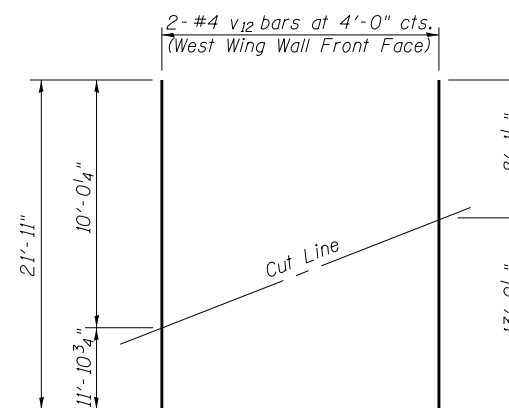
**FIELD CUTTING DIAGRAM**

(h7 bars)



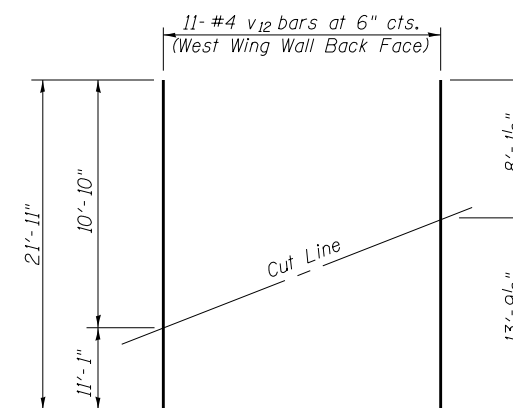
**FIELD CUTTING DIAGRAM**

(h8 bars)



**FIELD CUTTING DIAGRAM**

(v12 bars)



**FIELD CUTTING DIAGRAM**

(v12 bars)

Order h7 & h8 bars full length. Cut as shown. Use remainder of bar in opposite side of slab.

Order v11 and v12 bars full length. Cut as shown. Use remainder of bar in opposite side of wing wall.

S:\Projects\403\0002\_5770\Bridges\Bridges\_025-8648-74295-008-S\_Ext Dis 03.dwg

FILE NAME = 0258648-74295-008-S Ext Dis  
 BERNARDEN LOCHMULLER & ASSOCIATES, INC.  
 3 OAK DRIVE  
 MARYVILLE, ILLINOIS 62952  
 PHONE (618) 285-6666  
 FAX (618) 285-6666

DRAWER NAME =  
 Illinois Design Firm Number 184.001670  
 PLOT SCALE =  
 PLOT DATE = 2:54:31 PM 5/1/2013

DESIGNED - ACS  
 CHECKED - BB  
 DRAWN - WJS  
 CHECKED - CJF

REVISED -  
 REVISED -  
 REVISED -  
 REVISED -

**STATE OF ILLINOIS  
 DEPARTMENT OF TRANSPORTATION**

**SOUTH EXTENSION DETAILS  
 STRUCTURE NO. 025-8648**

SHEET NO. 8 OF 12 SHEETS

F.A.I. RE.	SECTION	COUNTY	TOTAL SHEETS	SHEET NO.
57/70	(25-4HVB-1)BY	EFFINGHAM	1760	527
CONTRACT NO. 74295			ILLINOIS FED. AID PROJECT	