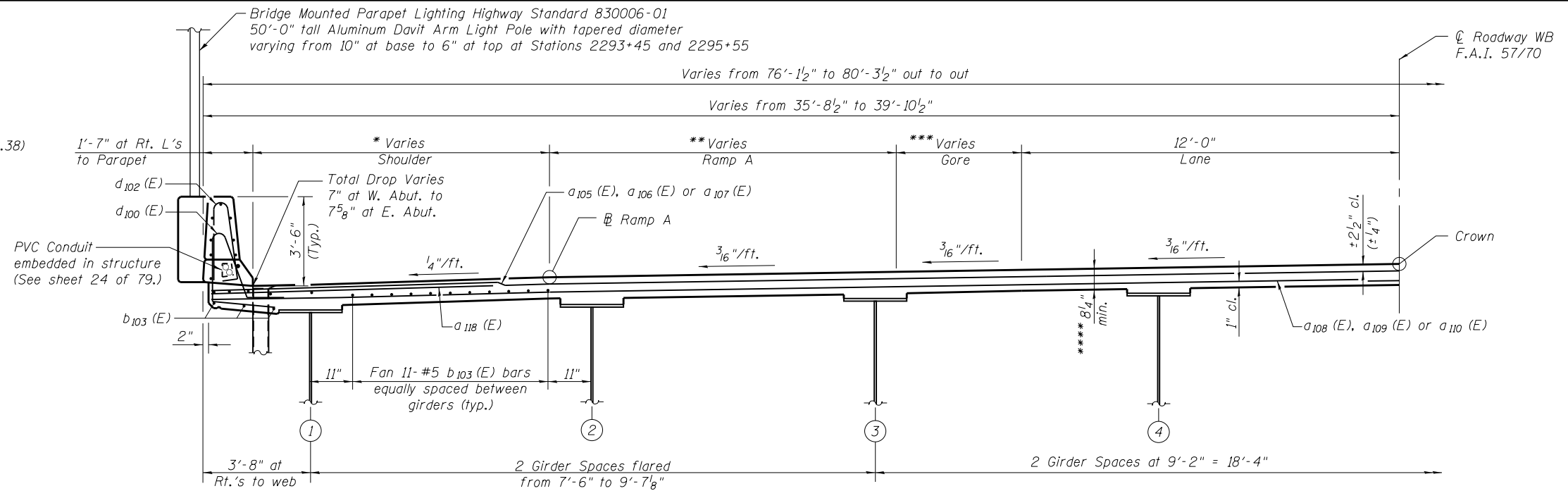


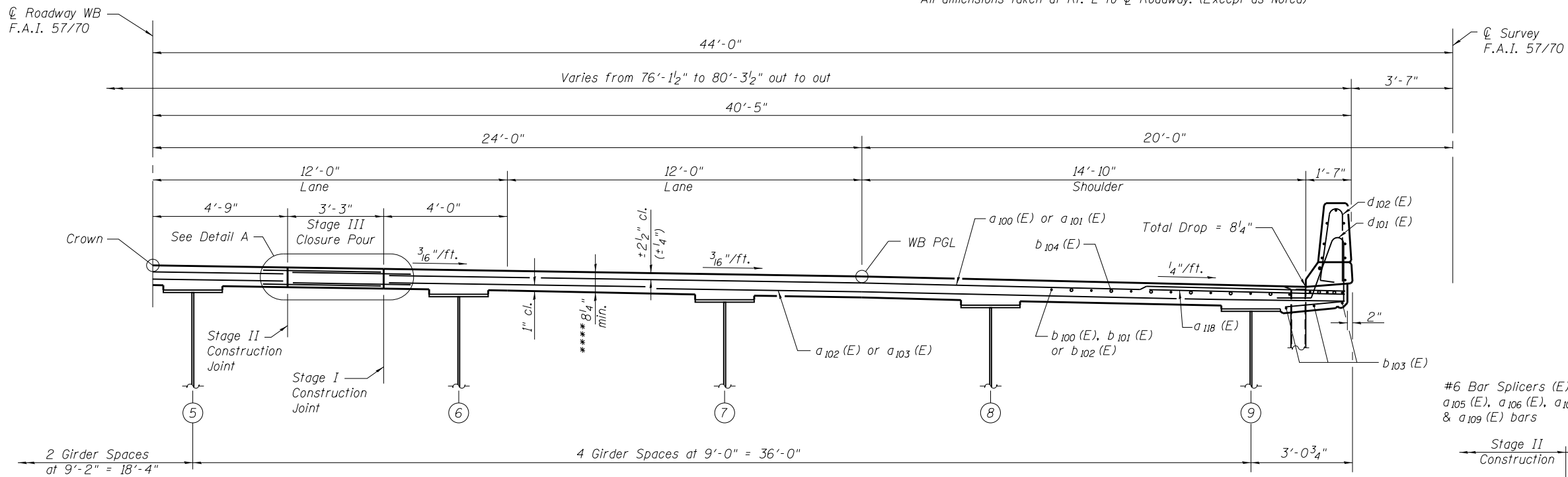
- * Shoulder Varies
 10'-1 1/2" to 10'-8 3/8" (W. Abut. to Sta. 2292+60.25)
 10'-8 3/8" to 8'-3 3/4" (Sta. 2292+60.25 to E. Abut.)
- ** Ramp A Varies
 12'-0" (W. Abut. to Sta. 2292+60.25)
 12'-0" to 16'-0" (Sta. 2292+60.25 to Sta. 2294+68.38)
 16'-0" (Sta. 2294+68.38 to E. Abut.)
- *** Gore Varies
 0" (W. Abut. to Sta. 2294+68.38)
 0" to 1'-11 3/4" (Sta. 2294+68.38 to E. Abut.)
- **** Prior to grinding according to Bridge Smoothness Specification

Notes:
 Ramp A dimension at E. Abut. taken at Rt. L's to Baseline Ramp A.
 See sheets 24 & 25 of 79 for additional Superstructure Details and Bill of Material.
 See sheet 25 of 79 for Parapet Reinforcement.



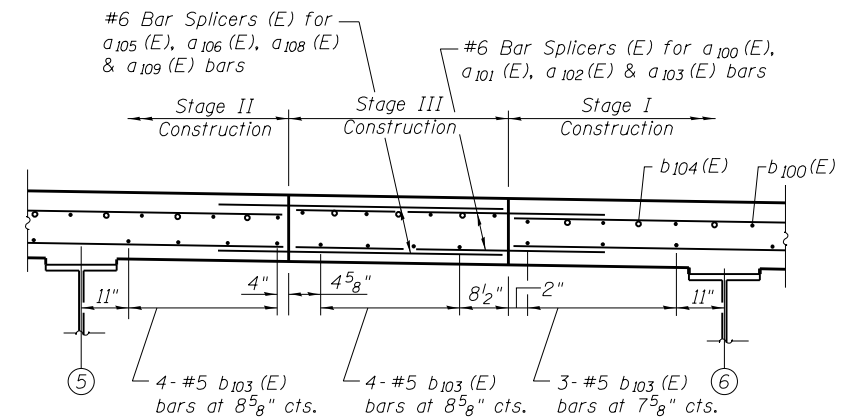
(Near Midspan)
 (Showing Reinforcement)
CROSS SECTION

(Looking East)
 All dimensions taken at Rt. L to \bar{C} Roadway. (Except as Noted)



(Near Pier)
 (Showing Reinforcement)
CROSS SECTION

(Looking East)
 All dimensions taken at Rt. L's to \bar{C} Roadway. (Except as Noted)



DETAIL A

FILE NAME = 025011-74295-023-Superstructure	DESIGNED - BB	REVISED	STATE OF ILLINOIS DEPARTMENT OF TRANSPORTATION	SUPERSTRUCTURE (WB) STRUCTURE NO. 025-0111	F.A.I. R.T.E. = 57/70	SECTION = (25-4HVB-1)BY	COUNTY = EFFINGHAM	TOTAL SHEETS = 1760	SHEET NO. = 558
DESIGNED BY NAME = bbovee	CHECKED - ACS	REVISED			SHEET NO. = 558				
ILLINOIS DESIGN FIRM NUMBER 184.001670	DRAWN - WJS	REVISED			CONTRACT NO. 74295				
PLOT SCALE =	CHECKED - CJF	REVISED			ILLINOIS FED. AID PROJECT				
PLOT DATE = 3:25:38 PM 8/14/2013			SHEET NO. 23 OF 79 SHEETS						