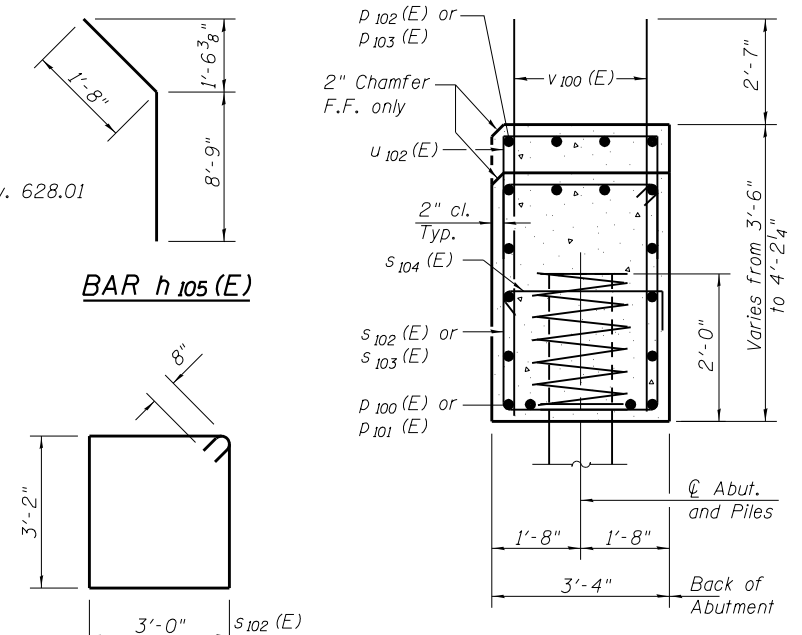
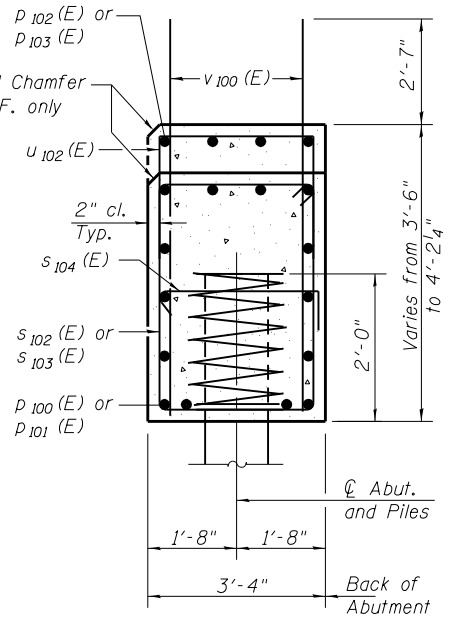
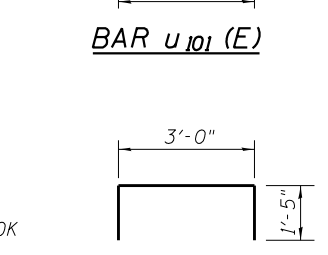
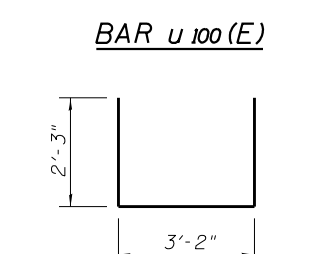
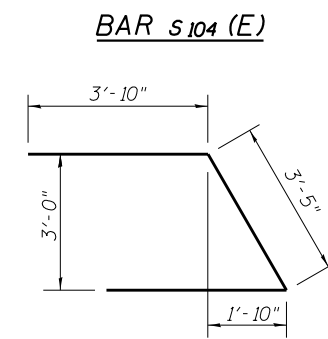
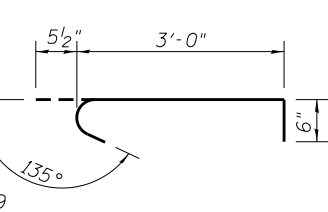


**ELEVATION**



**BAR s102(E) & s103(E)**



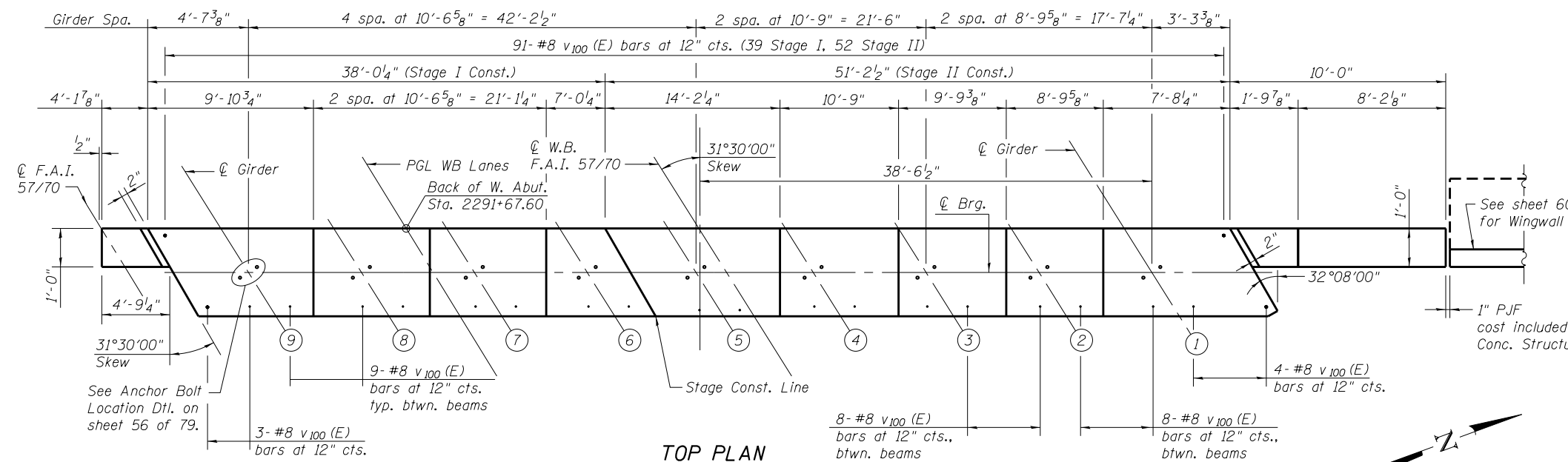
**SEC. A-A**

Dimensions at Rt. L's to Abutment

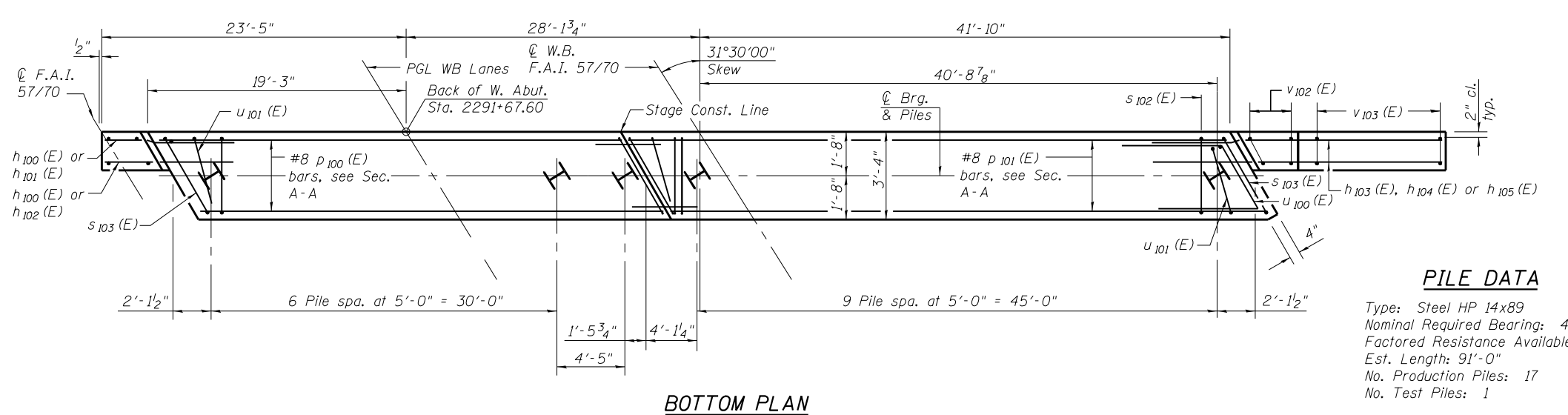
**BILL OF MATERIAL**

Bar	No.	Size	Length	Shape
h100(E)	14	#5	7'-0"	—
h101(E)	4	#5	3'-10"	—
h102(E)	4	#5	4'-6"	—
h103(E)	16	#7	12'-3"	—
h104(E)	3	#7	15'-8"	—
h105(E)	2	#7	10'-5"	—
p100(E)	14	#8	37'-8"	—
p101(E)	14	#8	50'-10"	—
p102(E)	4	#4	19'-2"	—
p103(E)	4	#4	34'-4"	—
s102(E)	103	#6	13'-8"	□
s103(E)	4	#6	14'-6"	□
s104(E)	36	#5	4'-0"	└┘
sd100(E)	18	#4	2'-0"	≡≡≡
u100(E)	10	#8	11'-1"	U
u101(E)	3	#6	7'-8"	U
u102(E)	51	#4	5'-10"	U
v100(E)	168	#8	6'-7"	—
v101(E)	10	#5	13'-4"	—
v102(E)	4	#5	10'-7"	—
v103(E)	9	#5	17'-6"	—
Structure Excavation			Cu. Yd.	234
Concrete Structures			Cu. Yd.	48.8
Reinforcement Bars, Epoxy Coated			Pound	11,220
Furnishing - Piles, HP14x89			Foot	1547
Driving Piles			Foot	1547
Test Pile, HP 14x89			Each	1

\* Length is height of spiral.  
Notes:  
Pour steps monolithically with cap.  
For details of piles see sheet 70 of 79.  
See sheet 59 of 79 for Field Cut Diagrams.  
Order p102(E) and p103(E) bars full length and cut to fit.



**TOP PLAN**



**BOTTOM PLAN**

**PILE DATA**  
Type: Steel HP 14x89  
Nominal Required Bearing: 436K  
Factored Resistance Available: 240K  
Est. Length: 91'-0"  
No. Production Piles: 17  
No. Test Piles: 1