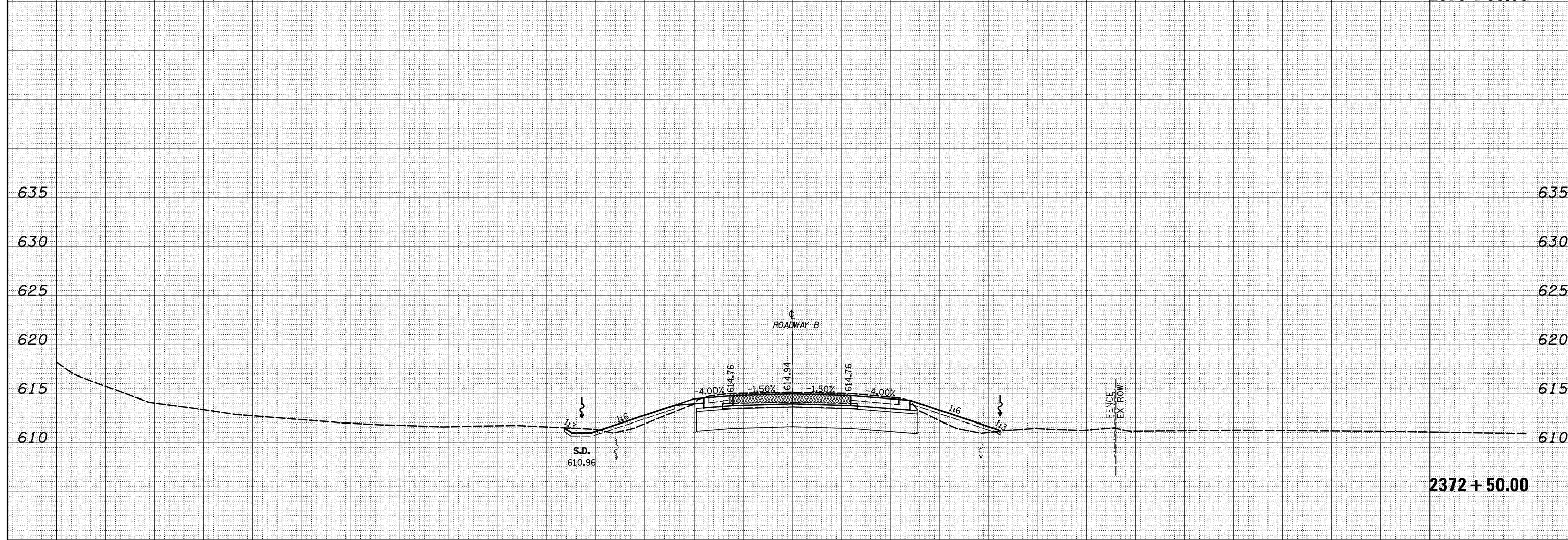
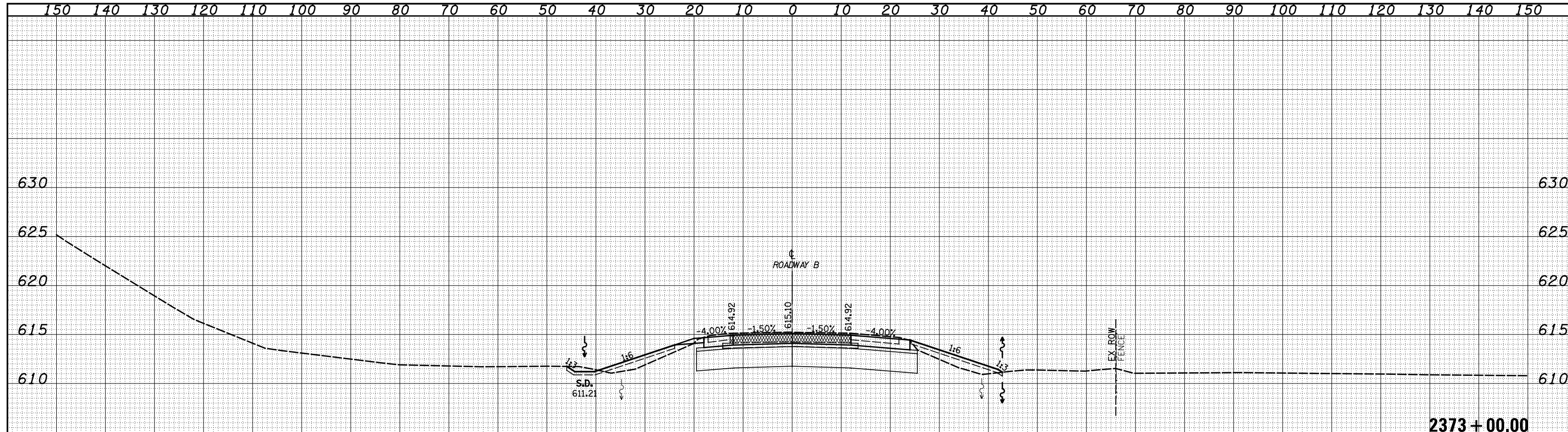


DATE	
BY	
SURVEYED	
PLOTTED	
TEMPLATE	
NOTE BOOK	
AREAS CHECKED	
NO.	

DATE	
BY	
SURVEYED	
PLOTTED	
TEMPLATE	
NOTE BOOK	
AREAS CHECKED	
NO.	



FILE NAME =	USER NAME = *USER*	DESIGNED - JWS	REVISED -	<b>STATE OF ILLINOIS</b> <b>DEPARTMENT OF TRANSPORTATION</b>	<b>CROSS SECTIONS NORTH TRI LEVEL - ROADWAY B</b>			F.A. RTE.	SECTION	COUNTY	TOTAL SHEETS	SHEET NO.
S:\Projects\43-00072-57-70\dp\11\TriLevel\110008.dgn		DRAWN - SGK	REVISED -		SCALE: 1"=10'	SHEET NO. 29 OF 56 SHEETS	STA. 2372+50.00 TO STA. 2373+00.00	57/70	(25-4)R	EFFINGHAM	1760	747
		CHECKED - BRM	REVISED -					CONTRACT NO. 74295				
		DATE - 3-25-08	REVISED -					FED. ROAD DIST. NO. ILLINOIS FED. AID PROJECT				