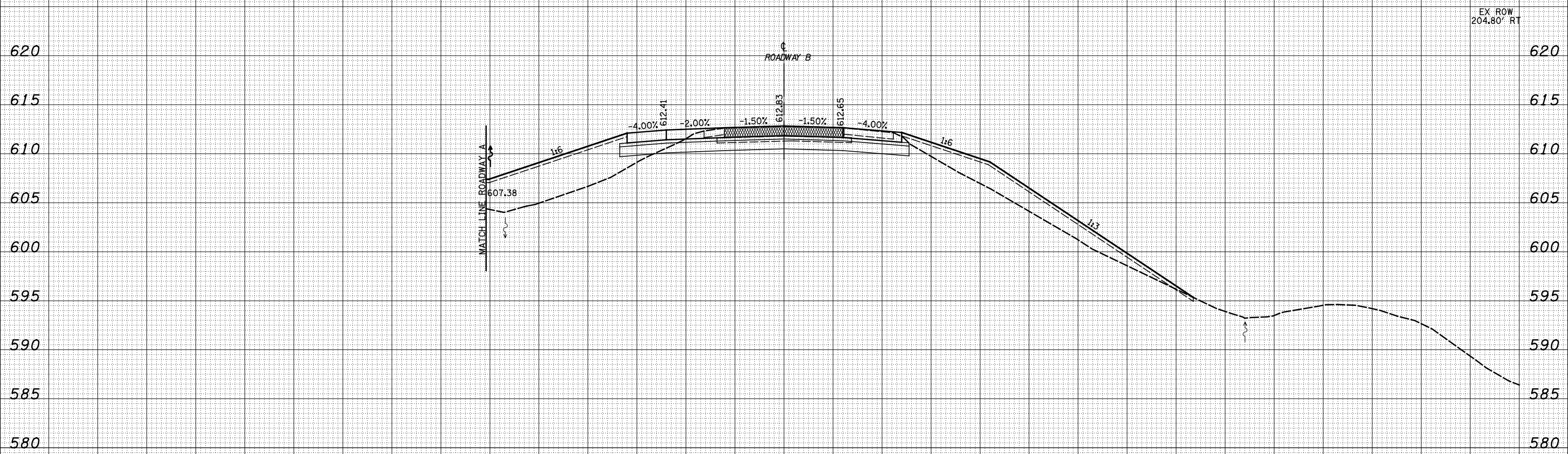


150 140 130 120 110 100 90 80 70 60 50 40 30 20 10 0 10 20 30 40 50 60 70 80 90 100 110 120 130 140 150

DATE	
BY	
SURVEYED	
PLOTTED	
TEMPLATE	
AREAS	
CHECKED	
FINAL SURVEY	
NOTE BOOK	
NO.	

DATE	
BY	
SURVEYED	
PLOTTED	
TEMPLATE	
AREAS	
CHECKED	
ORIGINAL SURVEY	
NOTE BOOK	
NO.	



2393 + 00.00

150 140 130 120 110 100 90 80 70 60 50 40 30 20 10 0 10 20 30 40 50 60 70 80 90 100 110 120 130 140 150

FILE NAME = S:\Projects\43-00072.57-70.dgn\11\Ink\level\170000.dgn

USER NAME = *USER*	DESIGNED - JWS	REVISED -
	DRAWN - SGK	REVISED -
PLOT SCALE = *SCALE*	CHECKED - BRM	REVISED -
PLOT DATE = *DATE*	DATE - 3-25-08	REVISED -

STATE OF ILLINOIS  
DEPARTMENT OF TRANSPORTATION

CROSS SECTIONS NORTH TRI LEVEL - ROADWAY B

SCALE: 1"=10' SHEET NO. 49 OF 56 SHEETS STA. 2393+00.00 TO STA. 2393+00.00

F.A. RTE.	SECTION	COUNTY	TOTAL SHEETS	SHEET NO.
57/70	(25-4)R	EFFINGHAM	1760	767
FED. ROAD DIST. NO.			ILLINOIS FED. AID PROJECT	
			CONTRACT NO. 74295	