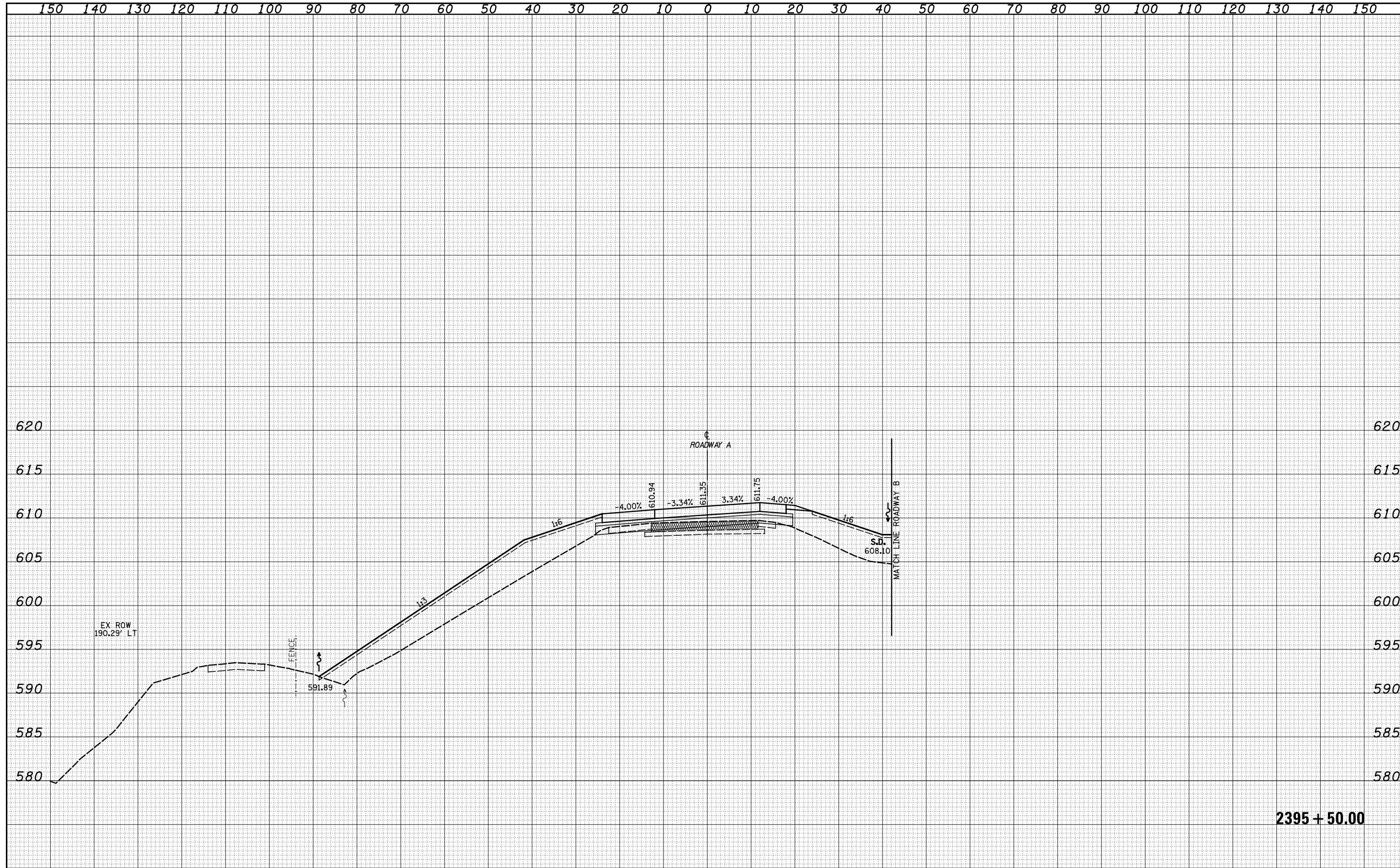


DATE	
BY	
SURVEYED	
PLOTTED	
TEMPLATE	
AREAS	
CHECKED	
FINAL	
SURVEY	
NOTE BOOK	
NO.	

DATE	
BY	
SURVEYED	
PLOTTED	
TEMPLATE	
AREAS	
CHECKED	
ORIGINAL	
SURVEY	
NOTE BOOK	
NO.	



2395 + 50.00

FILE NAME =	USER NAME = *USER*	DESIGNED - JWS	REVISED -	STATE OF ILLINOIS DEPARTMENT OF TRANSPORTATION	CROSS SECTIONS NORTH TRI LEVEL - ROADWAY A			F.A.T. RTE.	SECTION	COUNTY	TOTAL SHEETS	SHEET NO.
S:\Projects\403-00072.57-70.dgn\11700.dgn		DRAWN - SGK	REVISED -		SCALE: 1"=10'	SHEET NO. 58 OF 61 SHEETS	STA. 2395+50.00 TO STA. 2395+50.00	57/70	(25-4)R	EFFINGHAM	1760	986
		CHECKED - BRM	REVISED -					FED. ROAD DIST. NO. ILLINOIS FED. AID PROJECT				
		DATE - 3-25-08	REVISED -					CONTRACT NO. 74295				