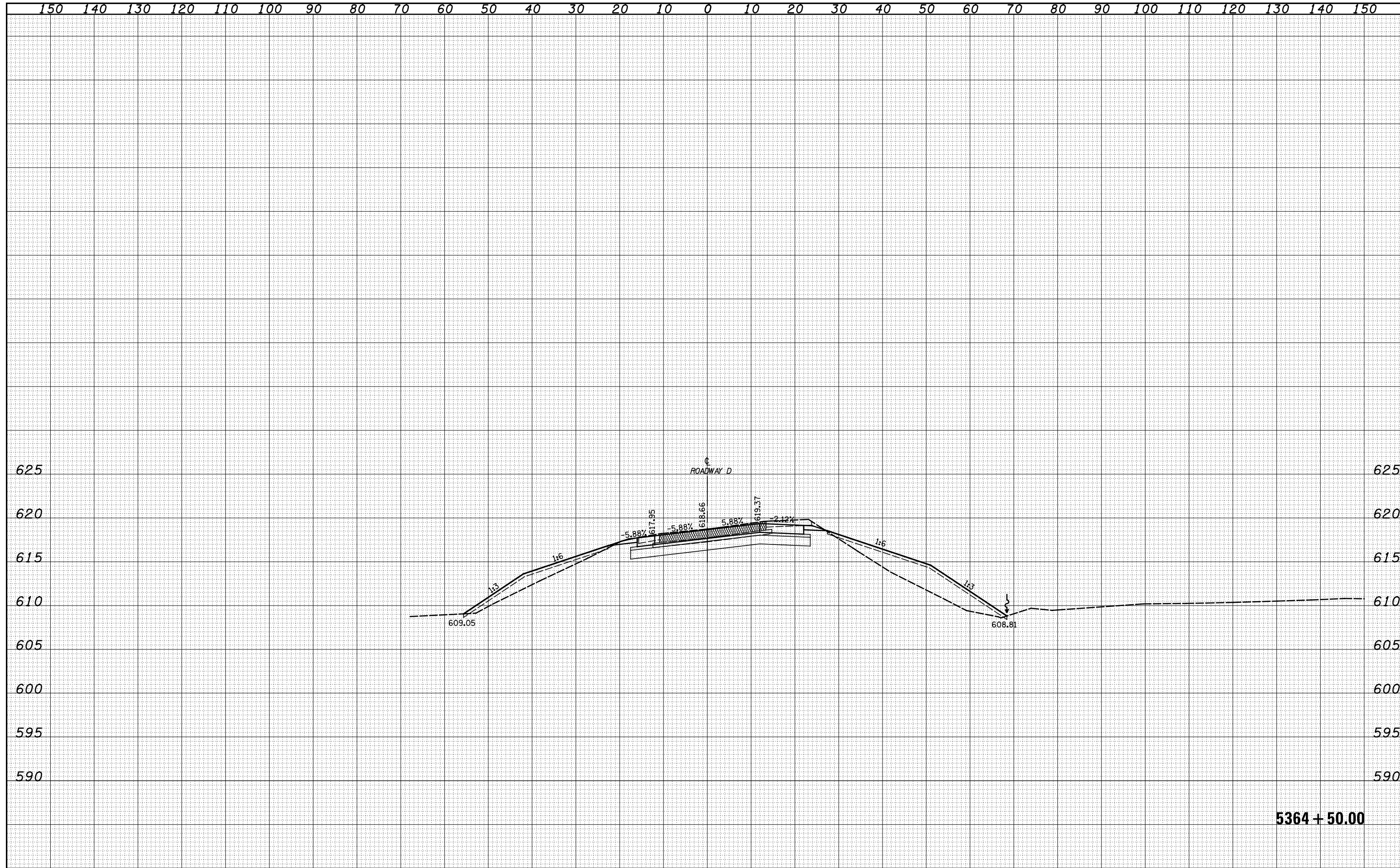


DATE	
BY	
SURVEYED	
PLOTTED	
TEMPLATE	
AREAS	
CHECKED	
FINAL SURVEY	
NOTE BOOK	
NO.	

DATE	
BY	
SURVEYED	
PLOTTED	
TEMPLATE	
AREAS	
CHECKED	
ORIGINAL SURVEY	
NOTE BOOK	
NO.	



5364 + 50.00

FILE NAME =	USER NAME = *USERS*	DESIGNED - JWS	REVISÉ -	STATE OF ILLINOIS DEPARTMENT OF TRANSPORTATION	CROSS SECTIONS NORTH TRI LEVEL - ROADWAY D			F.A.I. RTE.	SECTION	COUNTY	TOTAL SHEETS	SHEET NO.
S:\Projects\43-00072.57-70.dgn\11\Ink\vesh\170000.dgn		DRAWN - SGK	REVISÉ -		SCALE: 1"=10'	SHEET NO. 8 OF 11 SHEETS	STA. 5364+50.00 TO STA. 5364+50.00	57/70	(25-4)R	EFFINGHAM	1760	1013
		CHECKED - BRM	REVISÉ -					CONTRACT NO. 74295				
		DATE - 3-25-08	REVISÉ -					FED. ROAD DIST. NO. ILLINOIS FED. AID PROJECT				