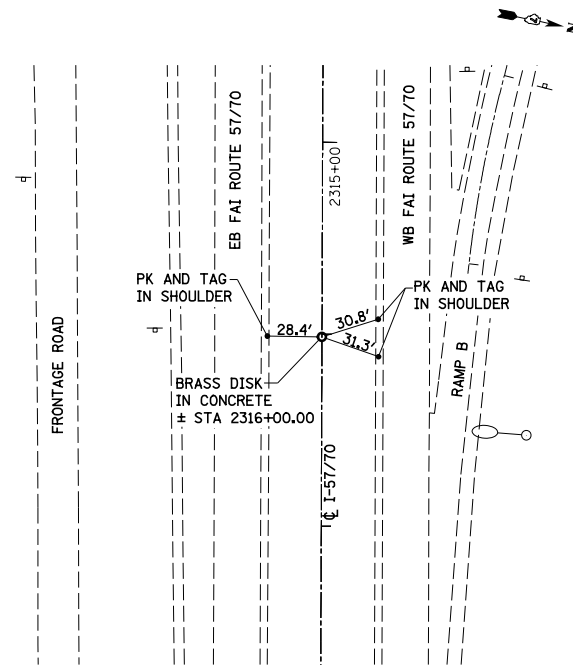
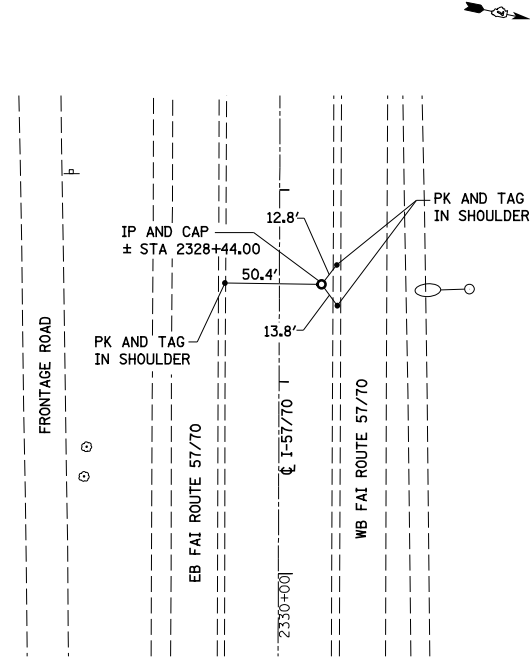


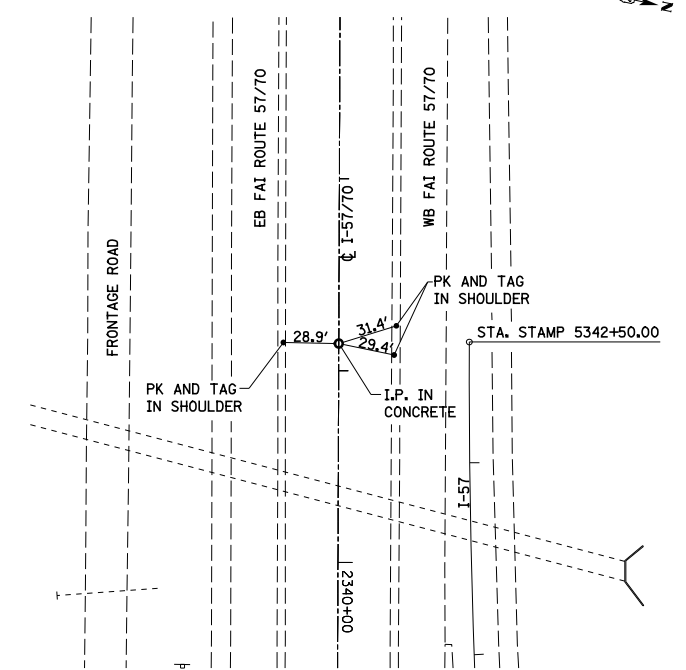
TRAVERSE/P.O.T. NUMBER 413



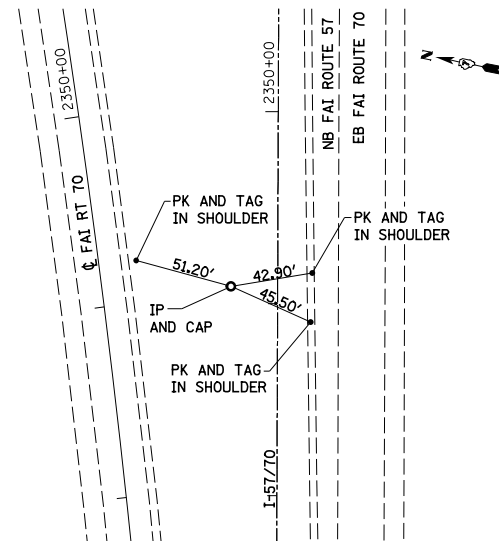
TRAVERSE/P.O.T. NUMBER 412



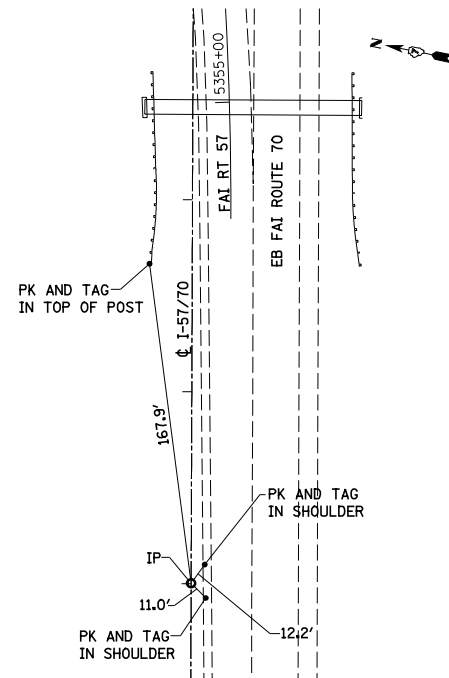
TRAVERSE/P.O.T. NUMBER 411



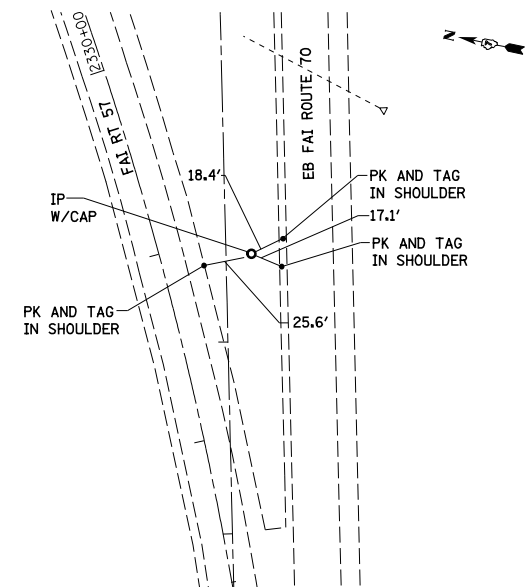
TRAVERSE/P.O.T. NUMBER 410



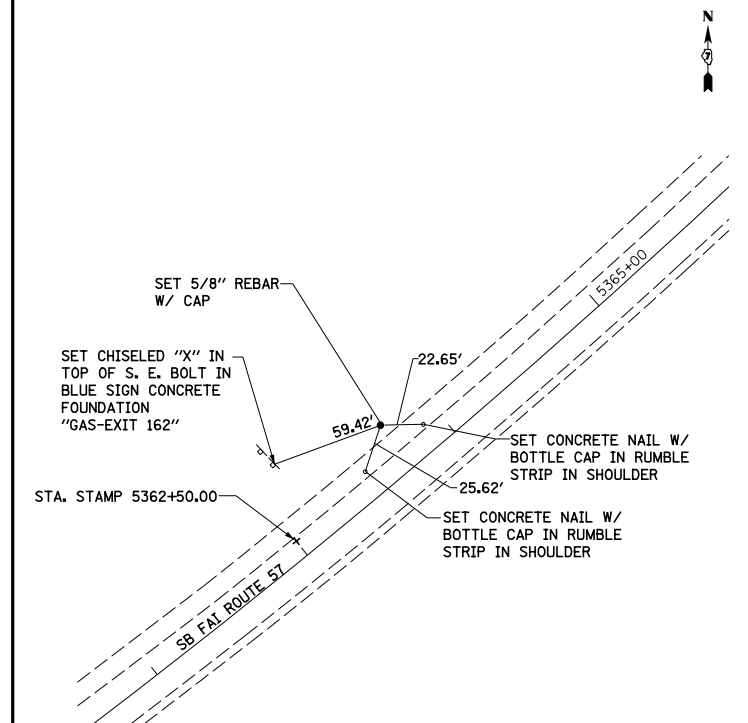
TRAVERSE/P.O.T. NUMBER 403



TRAVERSE/P.O.T. NUMBER 401



TRAVERSE/P.O.T. NUMBER 490



TRAVERSE/P.O.T. NUMBER 6029



FILE NAME = S:\Project\03-2007\257-70.dgn

USER NAME = \$USER\*  
 DESIGNED - JWS  
 DRAWN - PDB  
 CHECKED - BRM  
 DATE - 12-17-08

REVISED -  
 REVISED -  
 REVISED -  
 REVISED -

STATE OF ILLINOIS  
 DEPARTMENT OF TRANSPORTATION

TIE POINTS, FAI ROUTES 57/70

SCALE: 1"=100' SHEET NO. 4 OF 5 SHEETS STA. 2407+00.00 TO STA. 2437+00.92

F.A.I. RTE.	SECTION	COUNTY	TOTAL SHEETS	SHEET NO.
57/70	(25-4)R	EFFINGHAM	1760	1668
CONTRACT NO. 74295				
FED. ROAD DIST. NO. ILLINOIS FED. AID PROJECT				