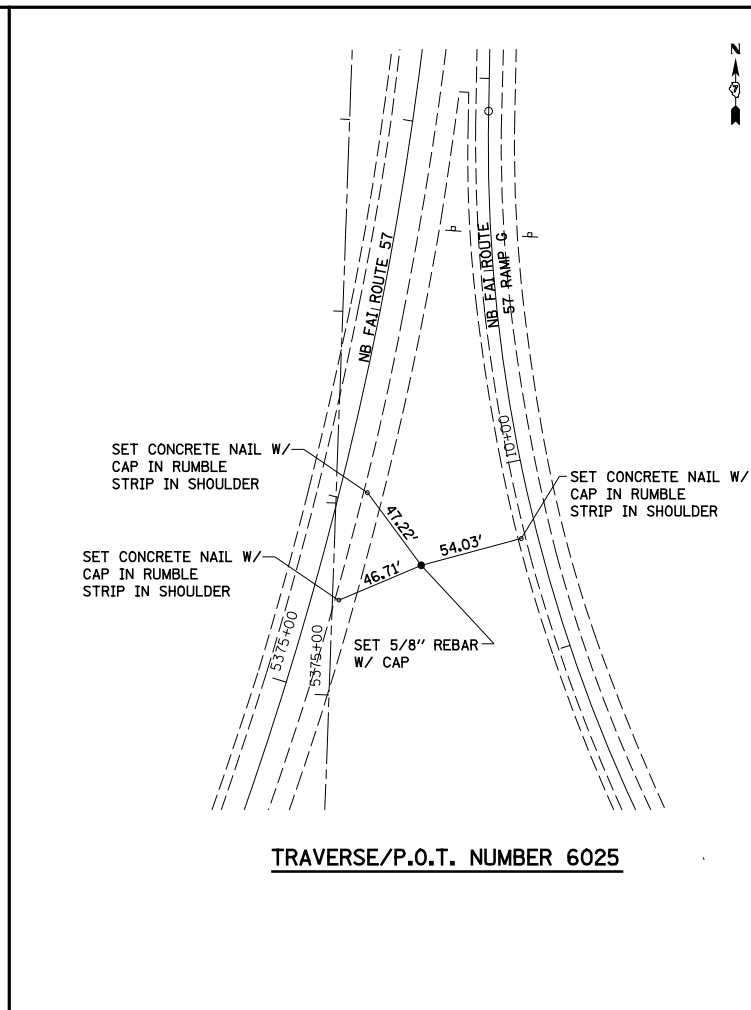
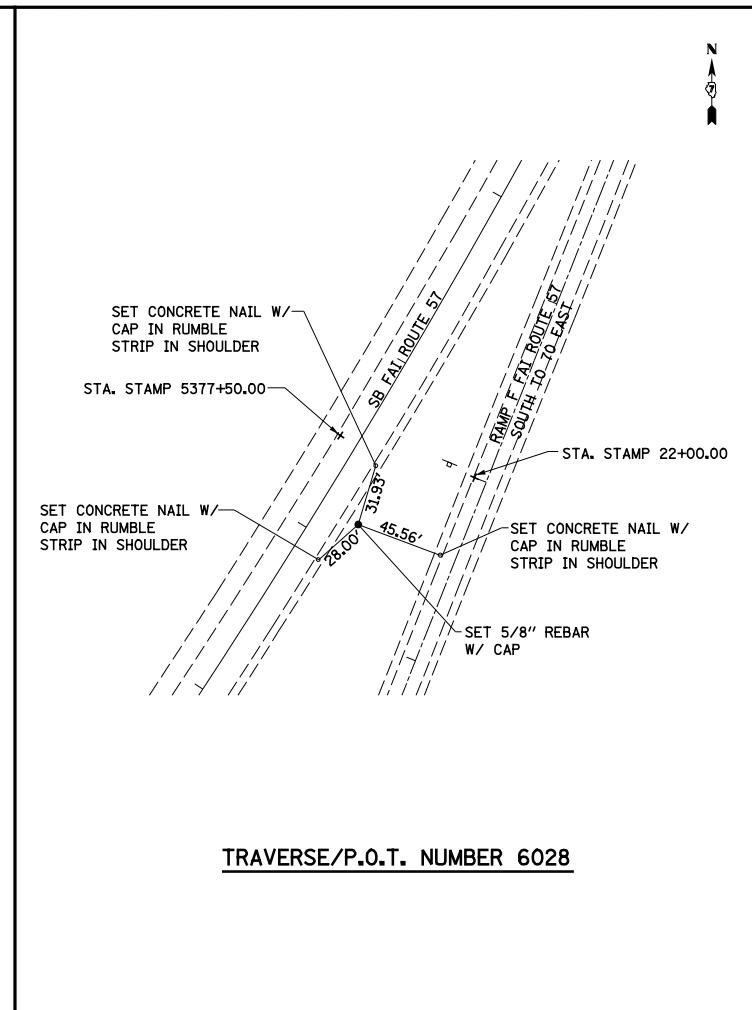


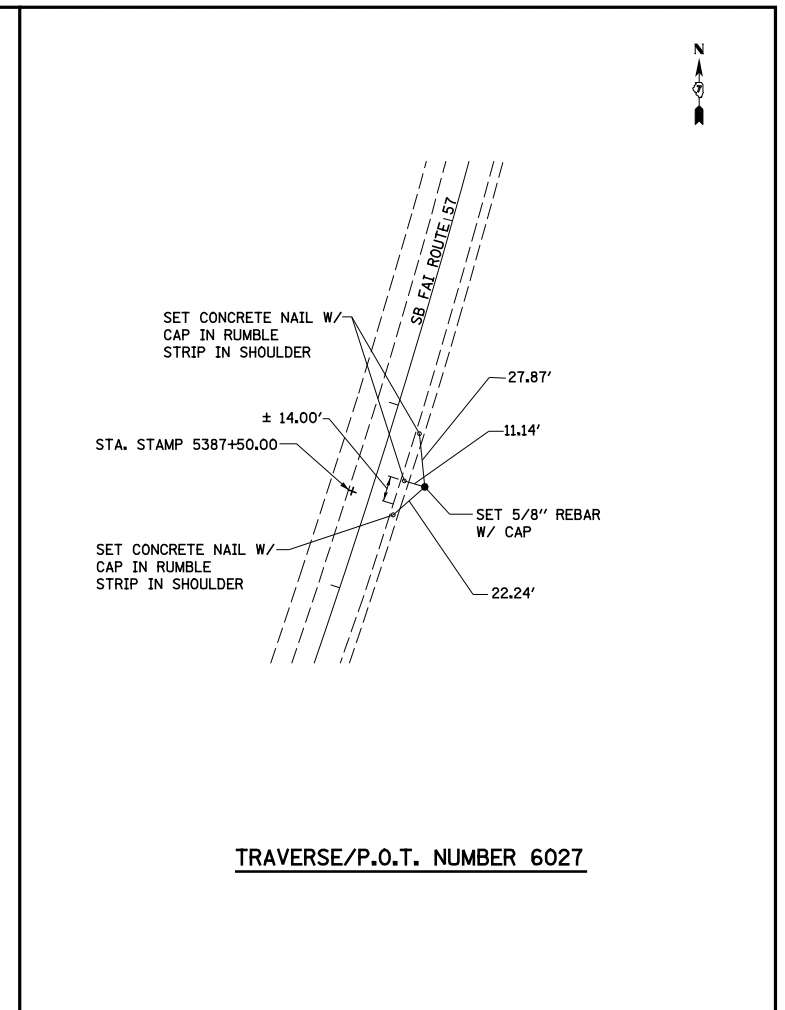
TRAVERSE/P.O.T. NUMBER 6024



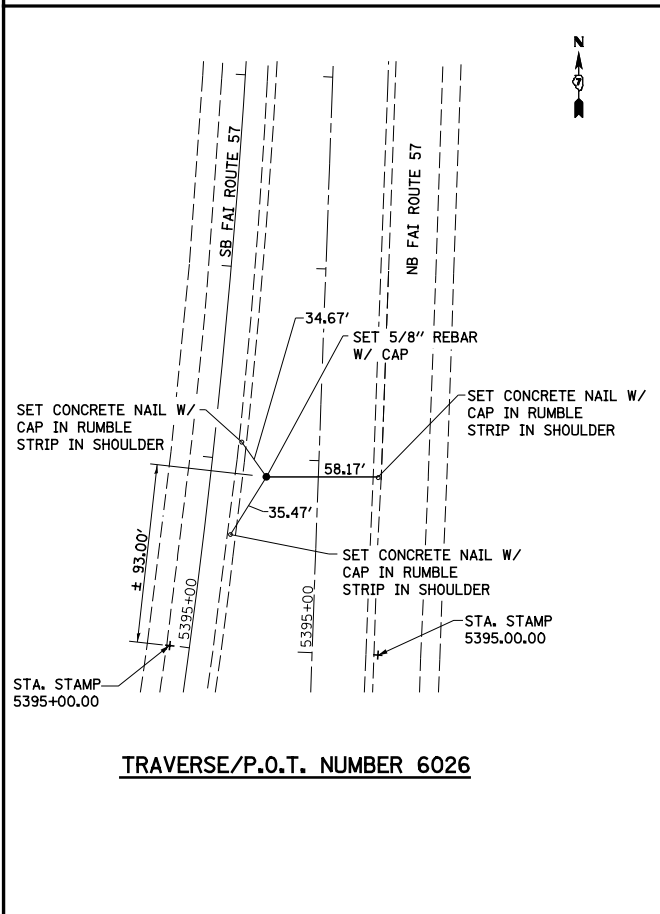
TRAVERSE/P.O.T. NUMBER 6025



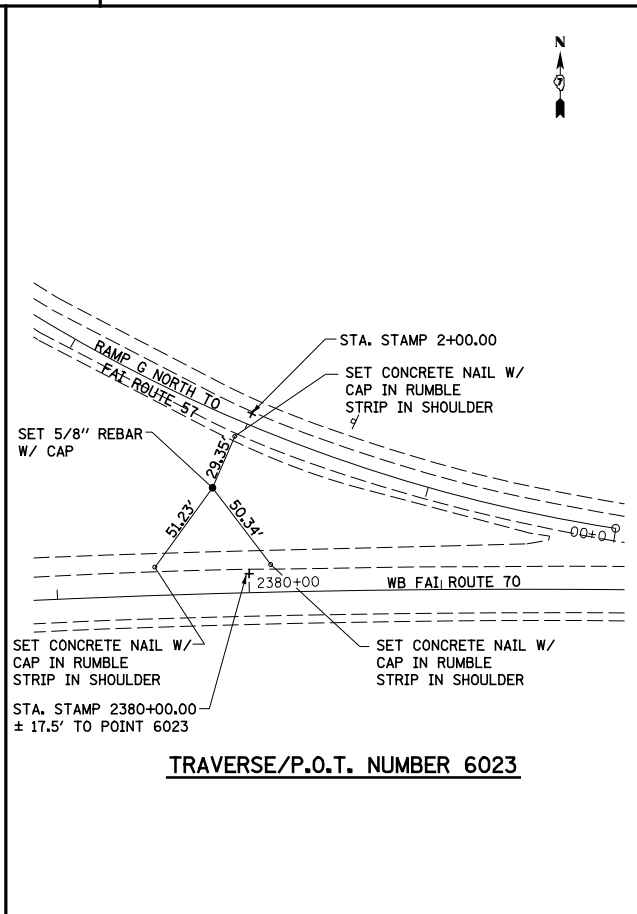
TRAVERSE/P.O.T. NUMBER 6028



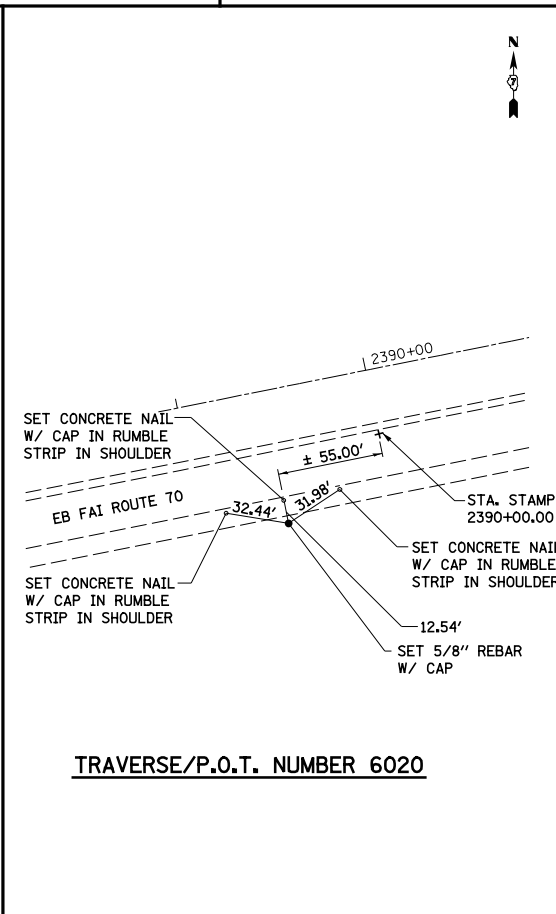
TRAVERSE/P.O.T. NUMBER 6027



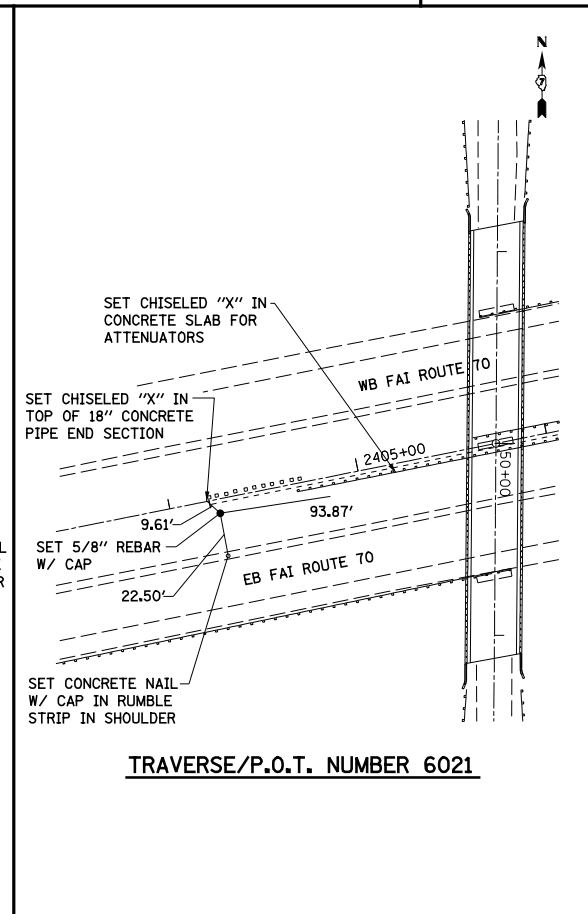
TRAVERSE/P.O.T. NUMBER 6026



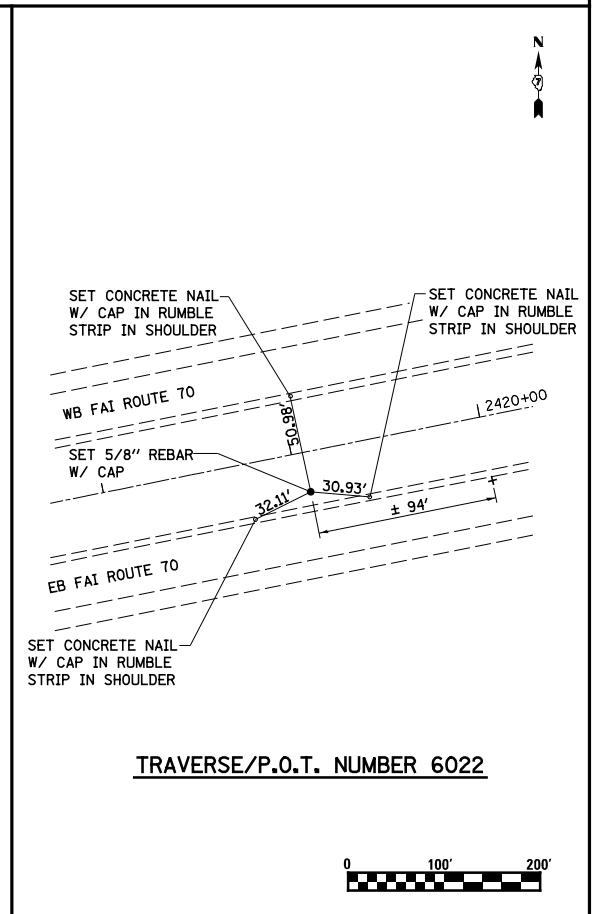
TRAVERSE/P.O.T. NUMBER 6023



TRAVERSE/P.O.T. NUMBER 6020



TRAVERSE/P.O.T. NUMBER 6021



TRAVERSE/P.O.T. NUMBER 6022



FILE NAME =	USER NAME = *USER*	DESIGNED - JWS	REVISED -
S:\Project\103\100725170.dgn\B-Repair\Nor\Nct.rvt.dgn		DRAWN - PDB	REVISED -
	PLOT SCALE = *SCALE*	CHECKED - BRM	REVISED -
	PLOT DATE = *DATE*	DATE - 12-17-08	REVISED -

STATE OF ILLINOIS  
DEPARTMENT OF TRANSPORTATION

TIE POINTS, FAI ROUTES 57/70

SCALE: 1"=100' SHEET NO. 5 OF 5 SHEETS STA. 2407+00.00 TO STA. 2437+00.92

F.A.I. RTE.	SECTION	COUNTY	TOTAL SHEETS	SHEET NO.
57/70	(25-4R)	EFFINGHAM	1760	1669
FED. ROAD DIST. NO.			ILLINOIS FED. AID PROJECT	
			CONTRACT NO. 74295	