

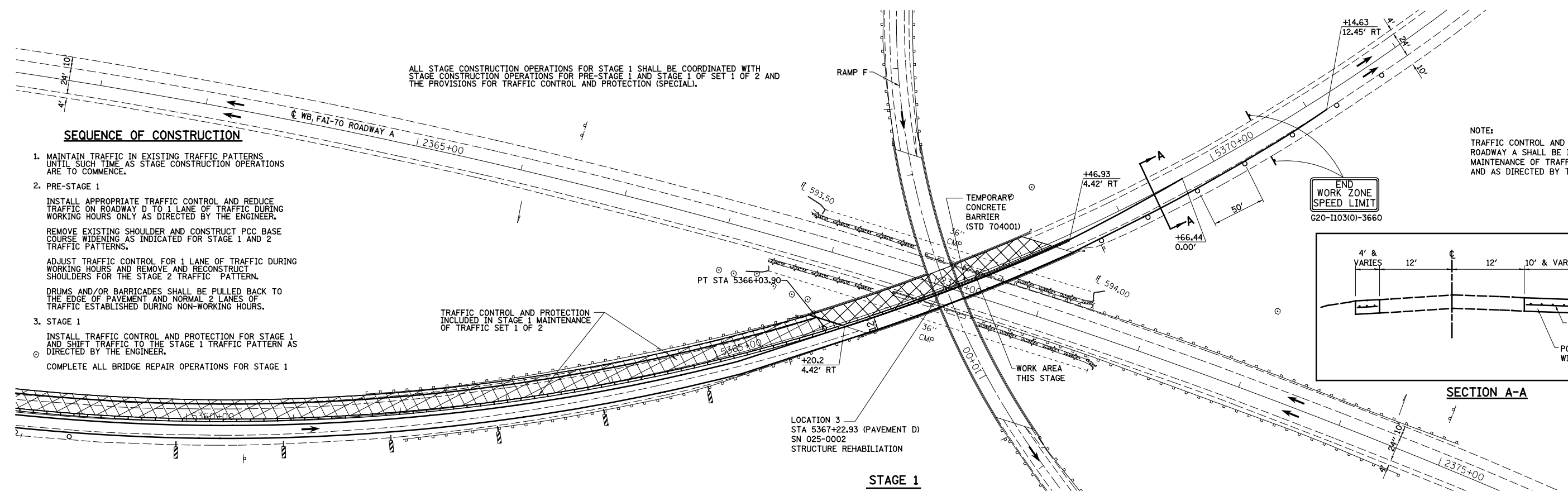


ALL STAGE CONSTRUCTION OPERATIONS FOR STAGE 1 SHALL BE COORDINATED WITH STAGE CONSTRUCTION OPERATIONS FOR PRE-STAGE 1 AND STAGE 1 OF SET 1 OF 2 AND THE PROVISIONS FOR TRAFFIC CONTROL AND PROTECTION (SPECIAL).

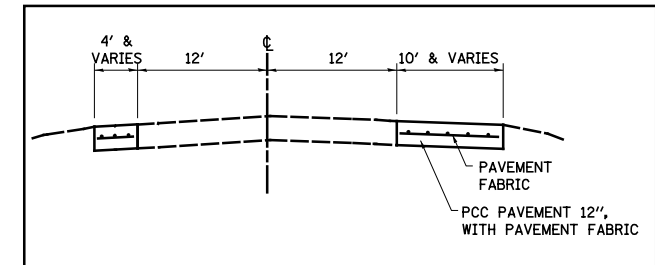
SEQUENCE OF CONSTRUCTION

1. MAINTAIN TRAFFIC IN EXISTING TRAFFIC PATTERNS UNTIL SUCH TIME AS STAGE CONSTRUCTION OPERATIONS ARE TO COMMENCE.
2. PRE-STAGE 1
INSTALL APPROPRIATE TRAFFIC CONTROL AND REDUCE TRAFFIC ON ROADWAY D TO 1 LANE OF TRAFFIC DURING WORKING HOURS ONLY AS DIRECTED BY THE ENGINEER.
REMOVE EXISTING SHOULDER AND CONSTRUCT PCC BASE COURSE WIDENING AS INDICATED FOR STAGE 1 AND 2 TRAFFIC PATTERNS.
ADJUST TRAFFIC CONTROL FOR 1 LANE OF TRAFFIC DURING WORKING HOURS AND REMOVE AND RECONSTRUCT SHOULDERS FOR THE STAGE 2 TRAFFIC PATTERN.
DRUMS AND/OR BARRICADES SHALL BE PULLED BACK TO THE EDGE OF PAVEMENT AND NORMAL 2 LANES OF TRAFFIC ESTABLISHED DURING NON-WORKING HOURS.
3. STAGE 1
INSTALL TRAFFIC CONTROL AND PROTECTION FOR STAGE 1 AND SHIFT TRAFFIC TO THE STAGE 1 TRAFFIC PATTERN AS DIRECTED BY THE ENGINEER.
COMPLETE ALL BRIDGE REPAIR OPERATIONS FOR STAGE 1

NOTE:
TRAFFIC CONTROL AND PROTECTION FOR ROADWAY A SHALL BE IN ACCORDANCE WITH MAINTENANCE OF TRAFFIC PLANS (SET 1 OF 2) AND AS DIRECTED BY THE ENGINEER.



END WORK ZONE SPEED LIMIT
G20-1103(0)-3660



SECTION A-A

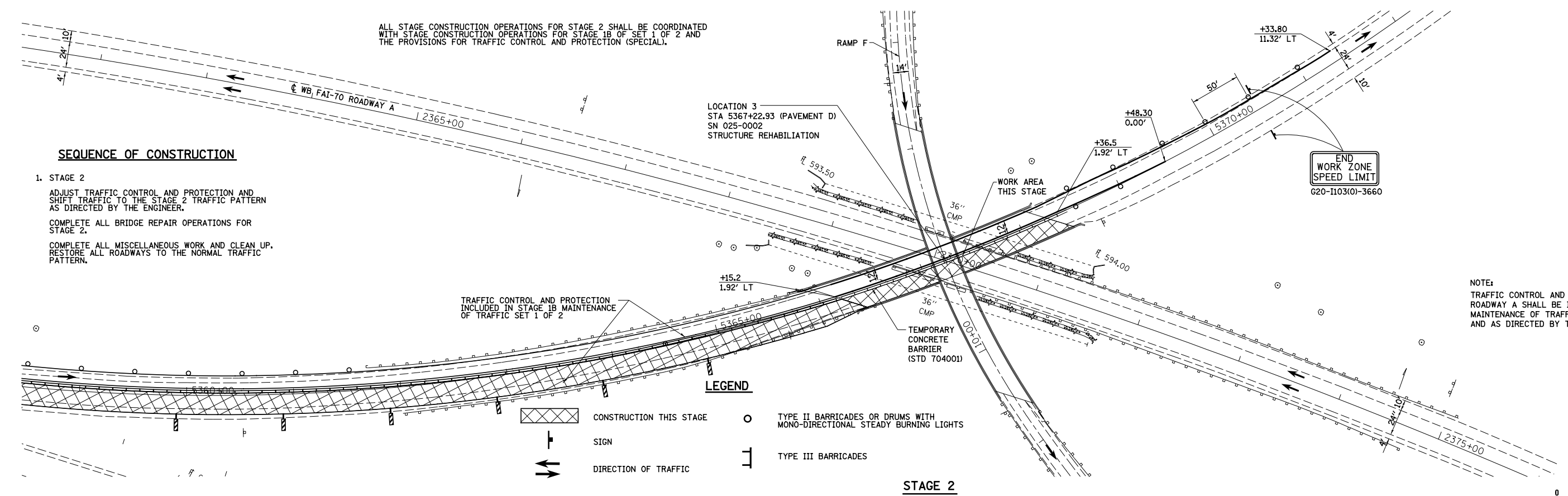
STAGE 1

ALL STAGE CONSTRUCTION OPERATIONS FOR STAGE 2 SHALL BE COORDINATED WITH STAGE CONSTRUCTION OPERATIONS FOR STAGE 1B OF SET 1 OF 2 AND THE PROVISIONS FOR TRAFFIC CONTROL AND PROTECTION (SPECIAL).

SEQUENCE OF CONSTRUCTION

1. STAGE 2
ADJUST TRAFFIC CONTROL AND PROTECTION AND SHIFT TRAFFIC TO THE STAGE 2 TRAFFIC PATTERN AS DIRECTED BY THE ENGINEER.
COMPLETE ALL BRIDGE REPAIR OPERATIONS FOR STAGE 2.
COMPLETE ALL MISCELLANEOUS WORK AND CLEAN UP. RESTORE ALL ROADWAYS TO THE NORMAL TRAFFIC PATTERN.

NOTE:
TRAFFIC CONTROL AND PROTECTION FOR ROADWAY A SHALL BE IN ACCORDANCE WITH MAINTENANCE OF TRAFFIC PLANS (SET 1 OF 2) AND AS DIRECTED BY THE ENGINEER.

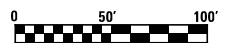


END WORK ZONE SPEED LIMIT
G20-1103(0)-3660

LEGEND

- CONSTRUCTION THIS STAGE
- SIGN
- DIRECTION OF TRAFFIC
- TYPE II BARRICADES OR DRUMS WITH MONO-DIRECTIONAL STEADY BURNING LIGHTS
- TYPE III BARRICADES

STAGE 2



FILE NAME =	USER NAME = \$USER\$	DESIGNED - JWS	REVISED -	STATE OF ILLINOIS DEPARTMENT OF TRANSPORTATION	LOCATION 3 MAINTENANCE OF TRAFFIC, NORTH TRI LEVEL ROADWAY D		F.A.I. RTE. 57/70	SECTION (25-4R)	COUNTY EFFINGHAM	TOTAL SHEETS 1760	SHEET NO. 1674
Sn\Projects\403-00072-57-70\dgn\Br Repair\Work\thmot	S2.NTr1.Pavement 0.dgn	DRAWN - PDB	REVISED -		SCALE: 1"=50'	SHEET NO. 1 OF 2 SHEETS	STA. TO STA.	FED. ROAD DIST. NO. ILLINOIS FED. AID PROJECT		CONTRACT NO. 74295	
		CHECKED - BRM	REVISED -								
		DATE - 7-21-08	REVISED -								