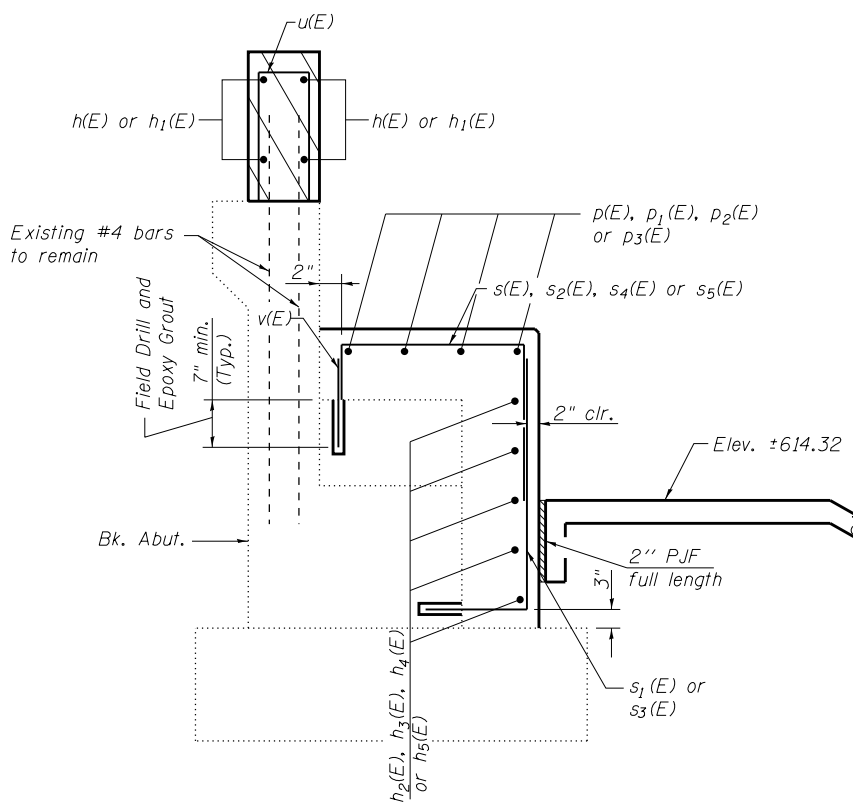
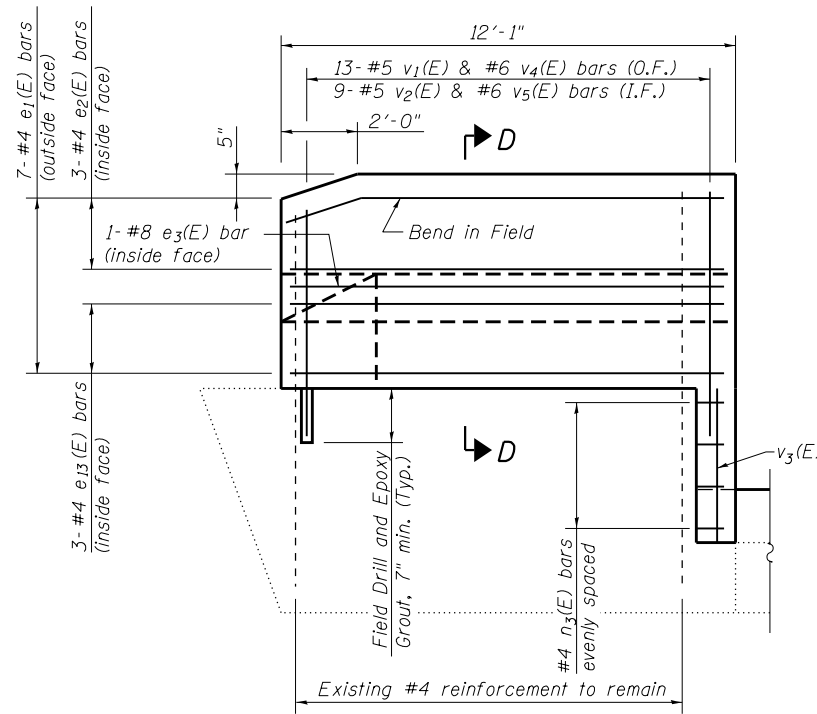


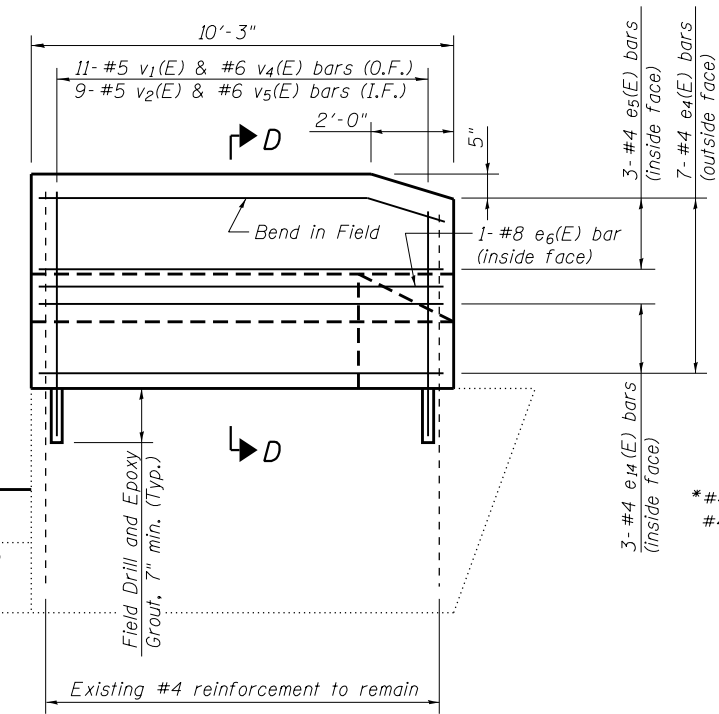
Dimensions at Rt L's  
**SECTION A-A**  
THRU ABUTMENT SHOWING OUTLINE



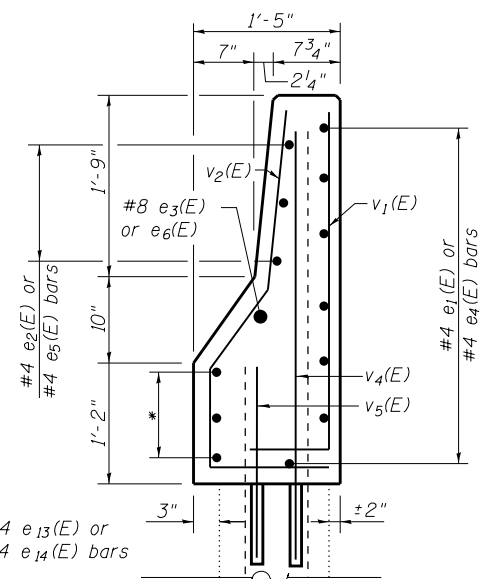
**SECTION A-A**  
THRU ABUTMENT SHOWING REINFORCEMENT



**VIEW B-B**  
(East Parapet)



**VIEW C-C**  
(West Parapet)



**SECTION D-D**  
SOUTH ABUTMENT BILL OF MATERIAL

Bar	No.	Size	Length	Shape
e <sub>1</sub> (E)	7	#4	11'-10"	
e <sub>2</sub> (E)	3	#4	10'-7"	
e <sub>3</sub> (E)	1	#8	10'-9"	
e <sub>4</sub> (E)	7	#4	9'-11"	
e <sub>5</sub> (E)	3	#4	10'-10"	
e <sub>6</sub> (E)	1	#8	11'-0"	
e <sub>13</sub> (E)	3	#4	10'-9"	
e <sub>14</sub> (E)	3	#4	11'-0"	

h(E)	4	#6	28'-0"	
h <sub>1</sub> (E)	4	#6	28'-5"	
h <sub>2</sub> (E)	5	#5	28'-10"	
h <sub>3</sub> (E)	1	#5	11'-4"	
h <sub>4</sub> (E)	3	#5	27'-8"	
h <sub>5</sub> (E)	1	#5	22'-10"	

n(E)	7	#5	5'-4"	
n <sub>1</sub> (E)	4	#5	3'-8"	
n <sub>2</sub> (E)	4	#4	2'-3"	

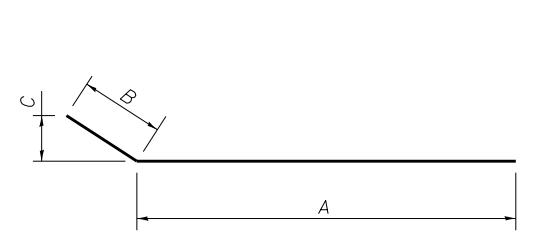
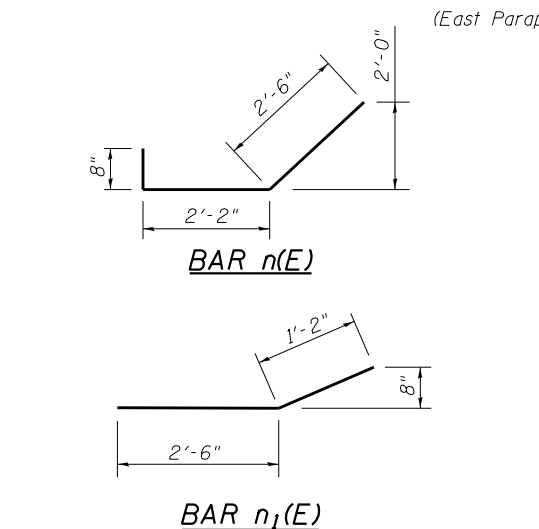
p(E)	2	#5	10'-9"	
p <sub>1</sub> (E)	2	#5	8'-5"	
p <sub>2</sub> (E)	16	#5	9'-10"	
p <sub>3</sub> (E)	4	#5	11'-5"	

s(E)	31	#5	7'-2"	
s <sub>1</sub> (E)	33	#5	5'-0"	
s <sub>2</sub> (E)	30	#5	5'-11"	
s <sub>3</sub> (E)	31	#5	3'-9"	
s <sub>4</sub> (E)	4	#5	5'-0"	
s <sub>5</sub> (E)	2	#5	6'-9"	

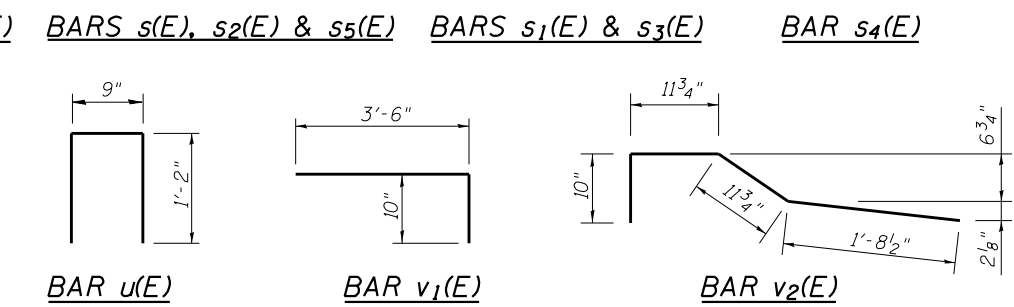
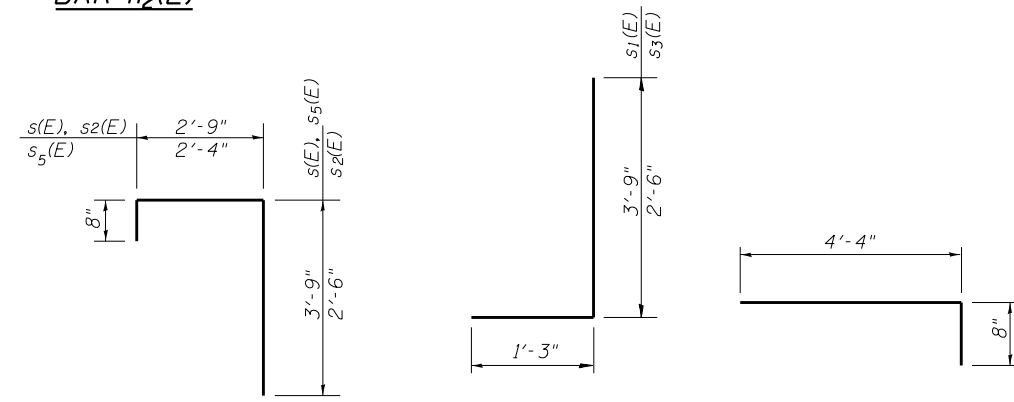
u(E)	60	#5	3'-1"	
------	----	----	-------	--

v(E)	66	#5	1'-3"	
v <sub>1</sub> (E)	24	#5	4'-4"	
v <sub>2</sub> (E)	18	#5	4'-6"	
v <sub>3</sub> (E)	1	#4	3'-8"	
v <sub>4</sub> (E)	24	#6	4'-2"	
v <sub>5</sub> (E)	18	#6	2'-3"	

Structure Excavation	Cu. Yd.	10.0
Concrete Structures	Cu. Yd.	11.9
Concrete Superstructures	Cu. Yd.	6.2
Reinforcement Bars, Epoxy Coated	Pound	2600
Bar Splicers	Each	9
Concrete Sealer	Sq. Ft.	657



Bar	A	B	C
e <sub>3</sub> (E)	8'-3 1/2"	2'-5 1/2"	8 3/4"
e <sub>6</sub> (E)	8'-6 1/4"	2'-5 3/4"	8 3/4"
e <sub>13</sub> (E)	8'-3 1/2"	2'-5 1/2"	8 3/4"
e <sub>14</sub> (E)	8'-6 1/4"	2'-5 3/4"	8 3/4"
p(E)	8'-7"	2'-2"	1'-9 1/2"



Notes:  
Hatched area quantity of concrete included with Concrete Superstructure.  
Bars shall be drilled and grouted according to Section 584 of the Standard Specifications.  
Apply Concrete Sealer to exposed horizontal and vertical faces of abutment extension.  
Per Article 501.05 of the Standard Specifications, the existing reinforcement in the Wingwall Radius section, to be removed, shall be cut flush. The ends of the existing reinforcement shall receive a two-part epoxy coating according to AASHTO M 317.