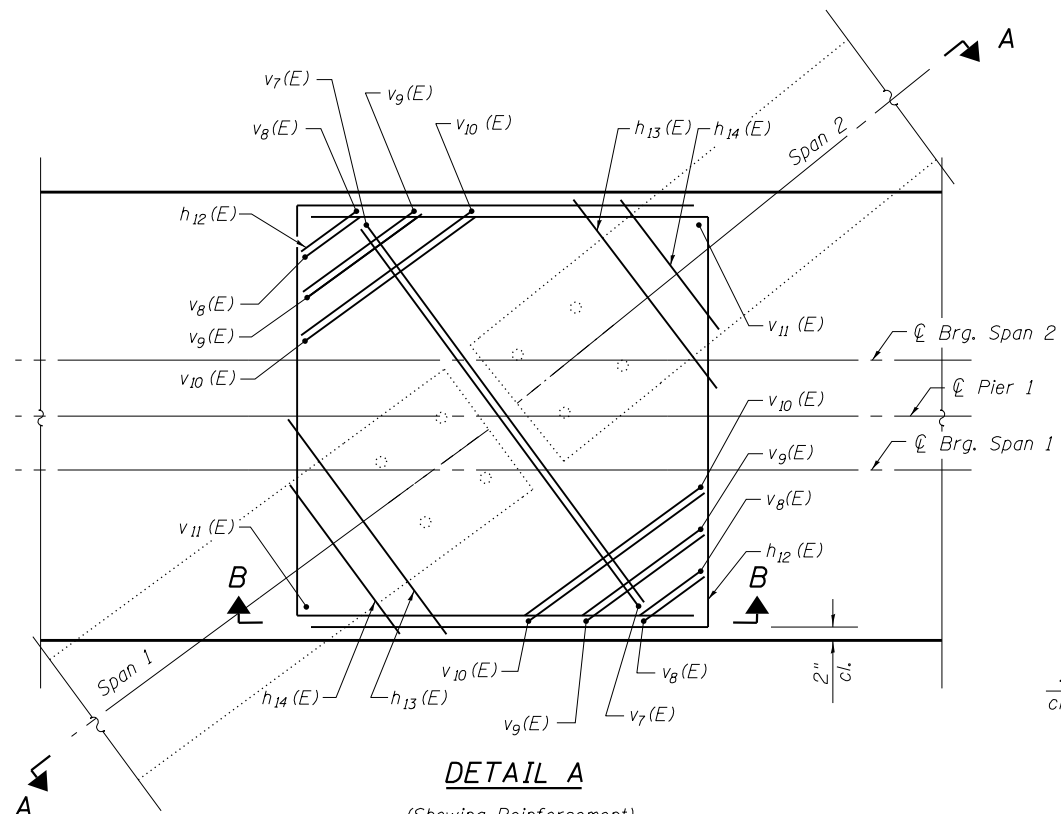
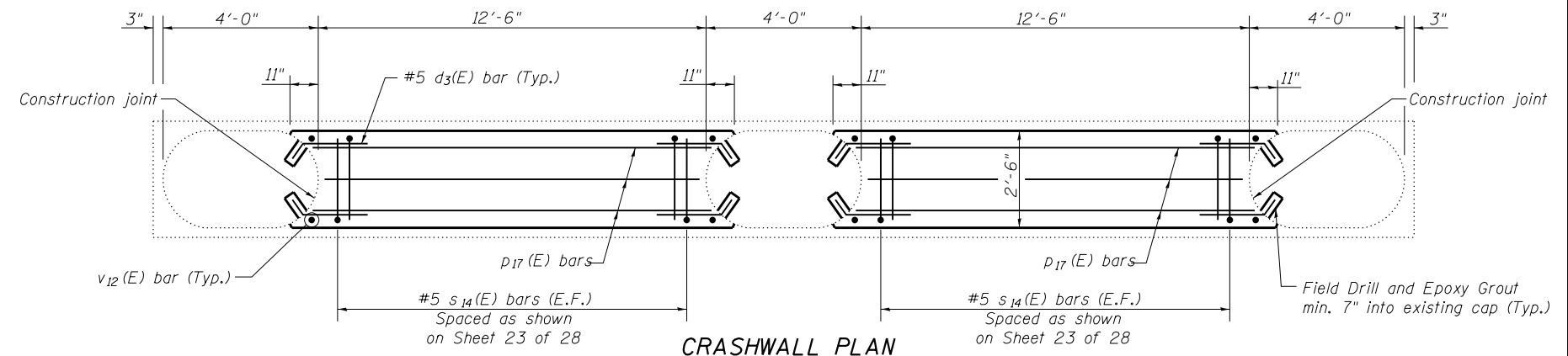


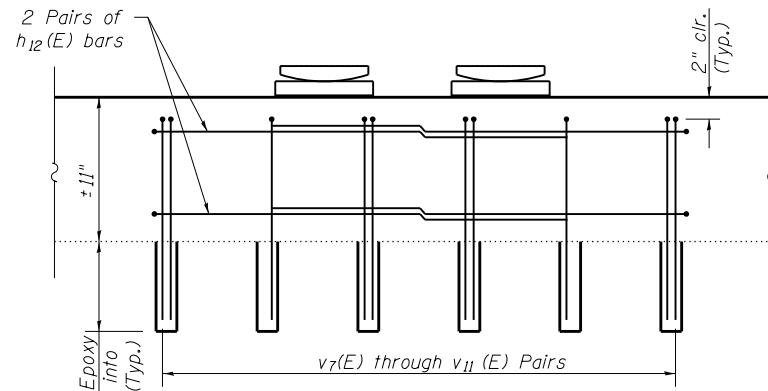
DETAIL A
(Showing Anchor Bolt Layout)



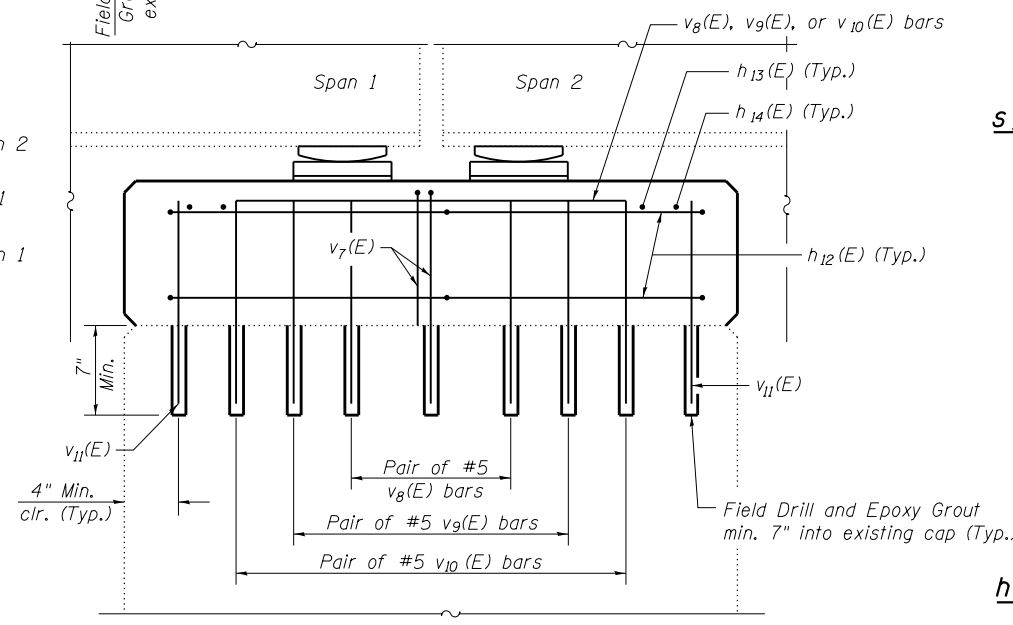
DETAIL A
(Showing Reinforcement)
(All reinforcement shown is #5 bars.)



CRASHWALL PLAN
PIER 1
VIEW D-D

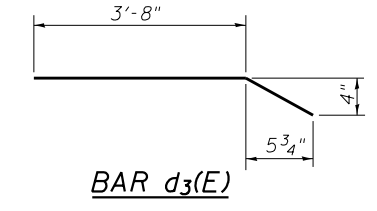


SECTION B-B

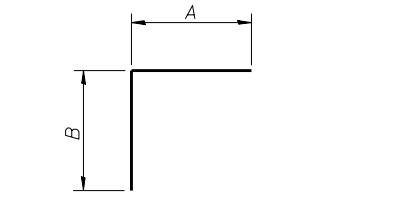


SECTION A-A

(All v(E) bars shown are drilled and grouted)
Side Retainers not shown for clarity.

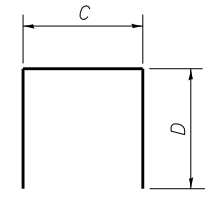


BAR d3(E)



s13(E), s14(E) & v(E) BARS

Bar	A	B
s13(E)	2'-8"	1'-4"
s14(E)	2'-2"	3'-5"
v7(E)	3'-0"	1'-4"
v8(E)	5"	1'-4"
v9(E)	11"	1'-4"
v10(E)	1'-5"	1'-4"



h12(E), s(E) & u(E) BARS

Bar	C	D
h12(E)	2'-8"	2'-9"
s15(E)	2'-8"	2'-8"
s16(E)	2'-8"	3'-8"
u1(E)	2'-4 1/2"	1'-5 1/4"
u2(E)	2'-4 1/2"	2'-8 1/4"

Notes:
Bars shall be drilled and grouted according to Section 584 of the Standard Specifications.
Concrete Sealer shall be applied only to exposed surfaces of the new concrete on Pier 1.

PIER 1
BILL OF MATERIAL

Bar	No.	Size	Length	Shape
d3(E)	32	#5	4'-3"	—
h12(E)	24	#5	8'-2"	□
h13(E)	12	#5	1'-4"	—
h14(E)	12	#5	10"	—
p8(E)	2	#5	9'-3"	—
p9(E)	10	#5	3'-10"	—
p10(E)	2	#5	2'-3"	—
p11(E)	6	#5	12'-7"	—
p12(E)	8	#5	5'-8"	—
p13(E)	2	#5	2'-10'	—
p14(E)	2	#5	9'-9"	—
p15(E)	2	#5	10'-10"	—
p16(E)	2	#5	2'-0"	—
p17(E)	18	#5	12'-2"	—
p18(E)	4	#5	1'-5"	—
p19(E)	4	#5	2'-8"	—
s13(E)	76	#5	4'-0"	┌
s14(E)	48	#5	5'-7"	┌
s15(E)	4	#5	8'-0"	┌
s16(E)	6	#5	10'-0"	□
u1(E)	2	#5	5'-3"	—
u2(E)	3	#5	7'-9"	—
v7(E)	12	#5	4'-4"	┌
v8(E)	24	#5	1'-9"	┌
v9(E)	24	#5	2'-3"	┌
v10(E)	24	#5	2'-9"	┌
v11(E)	12	#5	1'-4"	—
v12(E)	8	#5	3'-5"	—
Concrete Structures		Cu. Yd.	14.5	
Reinforcement Bars, Epoxy Coated		Pound	1870	
Concrete Sealer		Sq. Ft.	589	