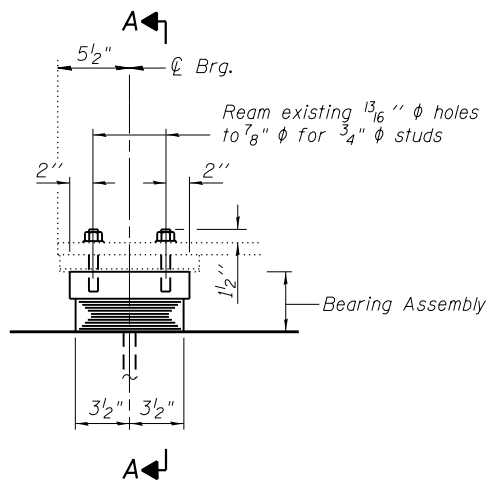


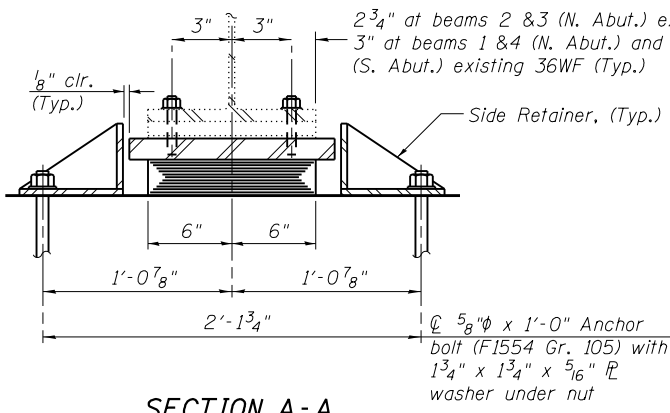
Indicates Removal of Existing Bearing and Steel Extension. Cost included with Jack and Remove Existing Bearings.

EXISTING BEARING REMOVAL DETAIL

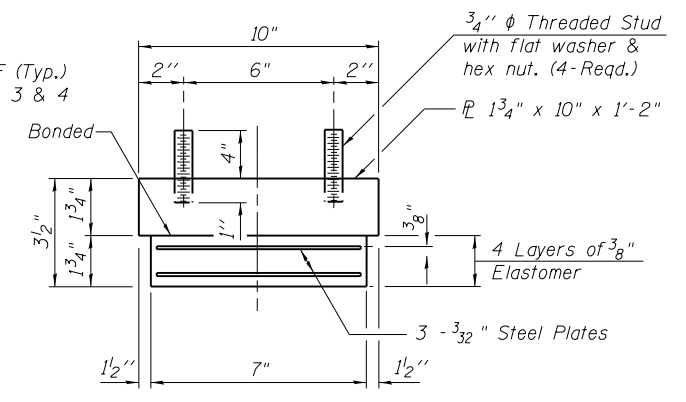
(8 Required)
4 at each Abutment



ELEVATION



SECTION A-A



BEARING ASSEMBLY

TYPE I ELASTOMERIC EXP. BRG.

(8 Required)
4 at each Abutment

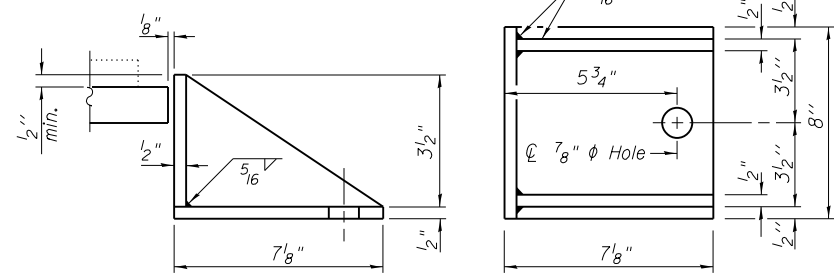
PROCEDURE TO JACK AND REMOVE EXISTING BEARINGS

(South & North Abutments)
(Minimum Jack Capacity Required 57 tons)

1. Jack and Remove Existing Bearings shall be conducted according to the Bridge Special Provision "Jack and Remove Existing Bearings. See Interior Beam Reaction Table for loads.
2. Jacking and removing existing bearings shall be done after partial deck concrete removal and before new deck concrete is poured.
3. Four beams may be lifted simultaneously.
4. Formwork and bearing seat construction shall occur.
5. The new elastomeric bearings shall be placed and the jacks shall be lowered.
6. The new holes for the side retainers shall be drilled at the locations specified.
7. No Bearing Replacement is required at Pier 1, Pier 2, Pier 3 and Pier 4. Clean and paint as specified for Structural Steel.

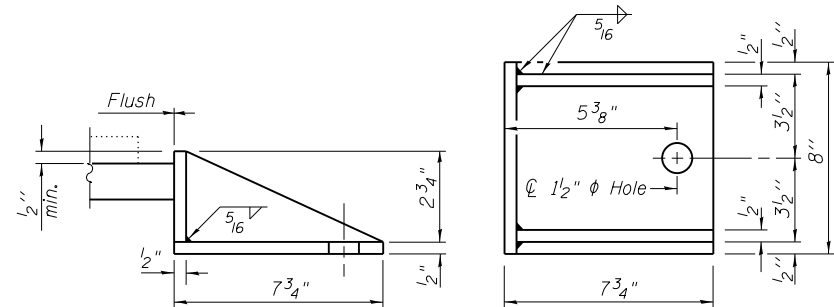
Notes:

Anchor bolts shall be ASTM F1554 all-thread (or an Engineer-approved alternate material) of the grade(s) and diameter(s) specified. The corresponding specified grade of AASHTO M314 anchor bolts may be used in lieu of ASTM F1554.
 Drilled and set anchor bolts shall be installed according to Article 521.06 of the Standard Specifications.
 Side retainers and other steel members required for the expansion bearing assemblies shall be included in the cost of Elastomeric Bearing Assembly, Type I. See Sheet 18 of 35 for Anchor Bolt location Details at South Abutment. See Sheet 21 of 35 for Anchor Bolt location Details at North Abutment. Side retainers, anchor bolts, nuts, washers and bearing plates may be galvanized according to AASHTO M111 or M232 (as applicable).
 Side Retainers at Encased Fixed Bearings (piers 1 & 4) shall be paid for as Furnishing & Erecting Structural Steel.



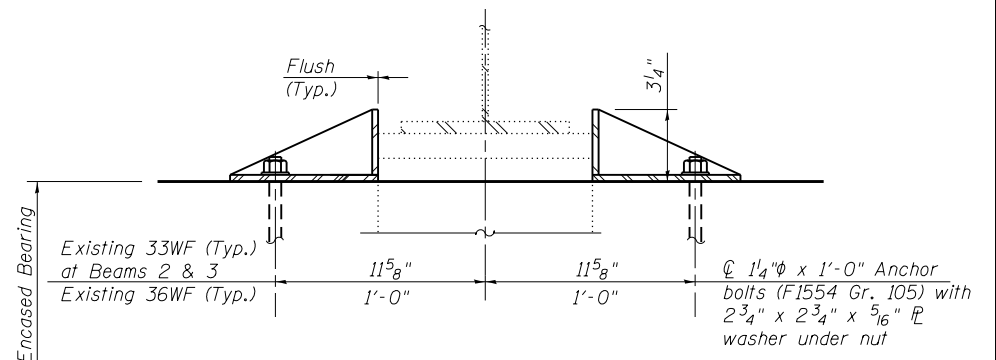
SIDE RETAINER AT ABUTMENTS

Equivalent rolled angle with stiffeners will be allowed in lieu of welded plates.



SIDE RETAINER AT ENCASED FIXED BEARINGS (PIERS 1 & 4)

(16 Required)
Equivalent rolled angle with stiffeners will be allowed in lieu of welded plates.



SIDE RETAINERS AT ENCASED FIXED BEARINGS PIER 1 & 4

BILL OF MATERIAL

Item	Unit	Total
Elastomeric Bearing Assembly Type I	Each	8
Anchor Bolts, 5/8"	Each	16
Anchor Bolts, 1/4"	Each	32
Jack & Remove Existing Bearings	Each	8
Furnishing & Erecting Structural Steel	Pound	480

INTERIOR BEAM REACTION TABLE					
	Span 1	Span 2	Span 3	Span 4	Span 5
R _l	(k) 28.2	29.4	28.6	24.3	23.9
R _r	(k) 36.2	36.5	36.4	35.2	35.0
Imp.	(k) 10.5	10.6	10.5	10.2	10.2
R _{Total}	(k) 74.9	76.5	75.5	69.7	69.1