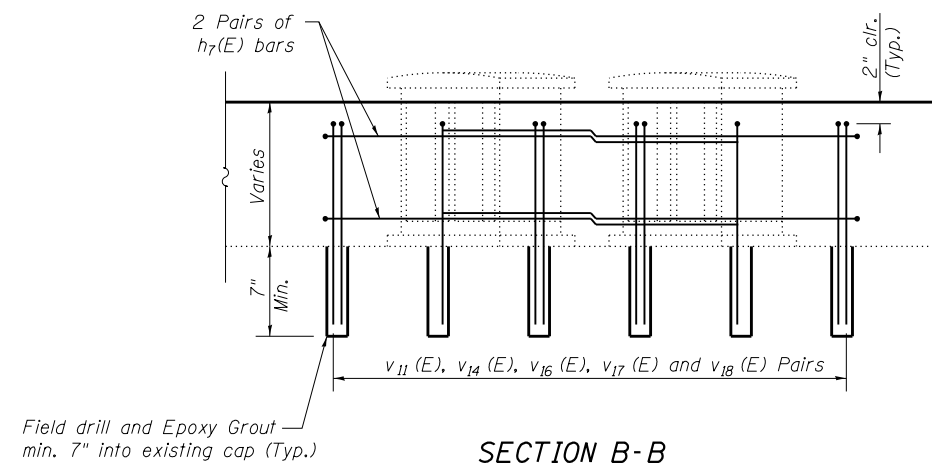
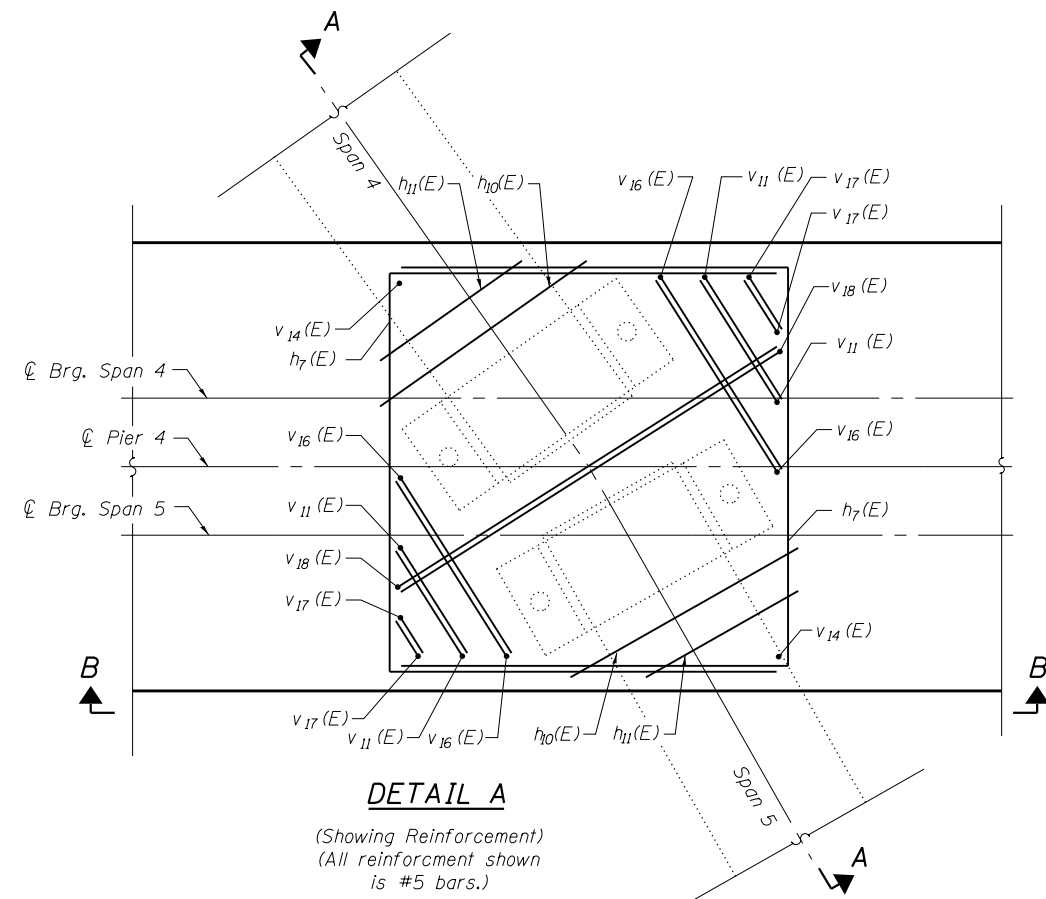


Bar	A	B
$v_{14}(E)$	1'-8"	1'-4"
$v_{15}(E)$	6"	1'-4"
$v_{16}(E)$	3'-2"	1'-4"

Notes:  
 See Sheet 24 of 35 for additional Bar Bend Details.  
 Bars shall be drilled and grouted according to Section 584 of the Standard Specifications.  
 Concrete Sealer shall be applied only to exposed surfaces of the new concrete on Pier 4.



BILL OF MATERIAL  
PIER 4

Bar	No.	Size	Length	Shape
$h_7(E)$	16	#5	8'-0"	┌
$h_{10}(E)$	8	#5	1'-6"	—
$h_{11}(E)$	8	#5	11"	—
$p_{15}(E)$	4	#5	5'-11"	—
$p_{16}(E)$	4	#5	7'-5"	—
$p_{17}(E)$	2	#5	1'-6"	—
$p_{18}(E)$	4	#5	1'-10"	—
$p_{19}(E)$	2	#5	2'-11"	—
$p_{20}(E)$	4	#5	2'-10"	—
$p_{21}(E)$	2	#5	1'-11"	—
$s_{11}(E)$	36	#5	4'-0"	└
$v_{11}(E)$	16	#5	2'-4"	└
$v_{14}(E)$	8	#5	1'-4"	—
$v_{16}(E)$	16	#5	3'-0"	└
$v_{17}(E)$	16	#5	1'-10"	└
$v_{18}(E)$	8	#5	4'-6"	└
Concrete Sealer		Sq. Ft.	146	
Concrete Structures		Cu. Yd.	2.9	
Reinforcement Bars, Epoxy Coated		Pound	570	

FILE NAME = 025009-74295-031.dgn

USER NAME =  
 Illinois Design Firm Number 184,001670  
 PLOT SCALE =  
 PLOT DATE = 2:408 PM 8/15/2013

DESIGNED - B.B.  
 CHECKED - A.C.S.  
 DRAWN - W.J.S.  
 CHECKED - C.J.F. & B.B.

REVISED -  
 REVISED -  
 REVISED -  
 REVISED -

STATE OF ILLINOIS  
 DEPARTMENT OF TRANSPORTATION

PIER 4 DETAILS  
 STRUCTURE NO. 025-0019

SHEET NO. 31 OF 35 SHEETS

F.A.I. RTE.	SECTION	COUNTY	TOTAL SHEETS	SHEET NO.
57/70	(25-4HB)1-3	EFFINGHAM	1760	1736
CONTRACT NO. 74295				

ILLINOIS FED. AID PROJECT