

Bench Mark: Chiseled square on raised concrete median at center of US Route 45 approximately 140'-0" North of I-57/70 centerline. US Route 45 Sta. 60+10, Elev. 592.07.

**GENERAL NOTES**

See Roadway Maintenance of Traffic plans for Plan View layout of retention systems and location of Borings.

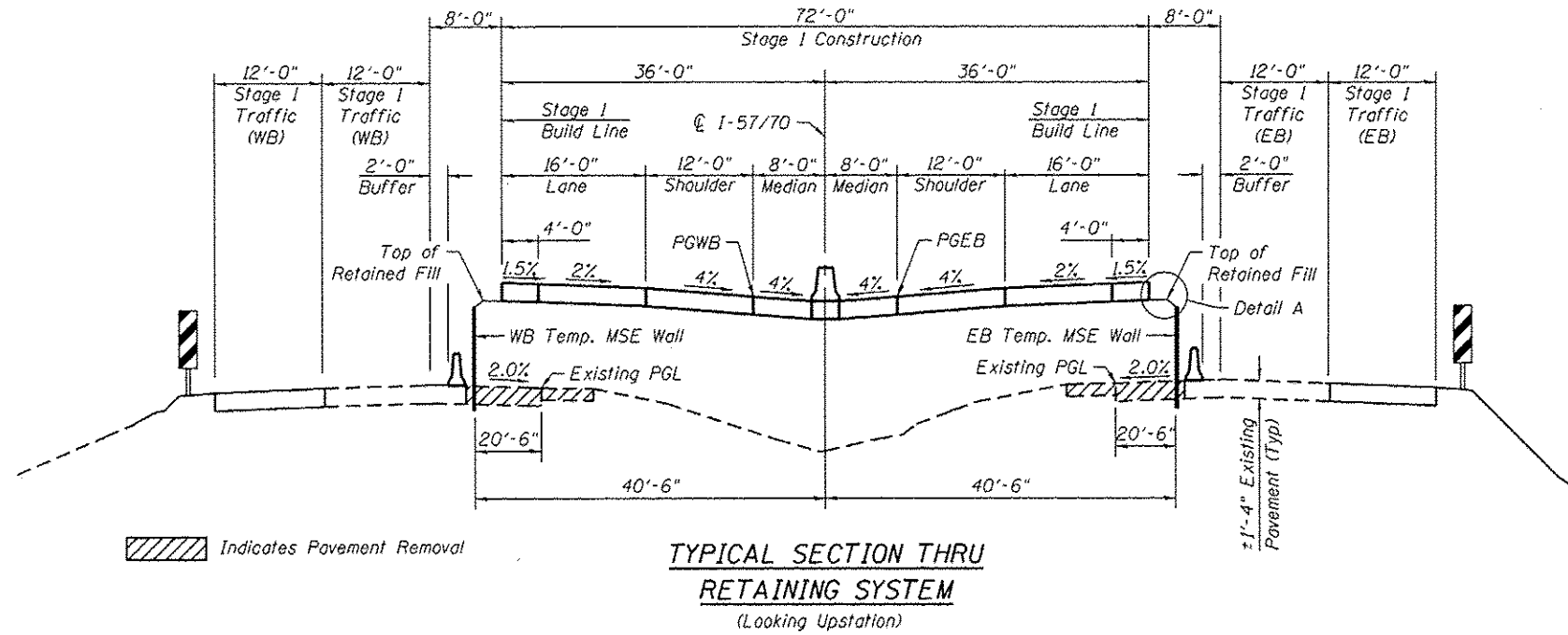
In areas designated to be shored with temporary cantilevered sheet piling, if the Contractor chooses to alter the temporary cantilevered sheet piling design requirements shown on the plans, a design submittal including plan details and calculations will be required for review and acceptance by the Engineer.

In areas designated to be shored with a Temporary MSE Wall, the Maximum Excavation Line Corresponds to the Bottom of the Exposed Sacrificial Fascia of the Temporary MSE wall. Additional Structure Excavation may be required as specified by the Temporary MSE wall manufacturer. Any incidental Structure Excavation shall be handled and paid for according to General Special Provision for Temporary MSE Walls.

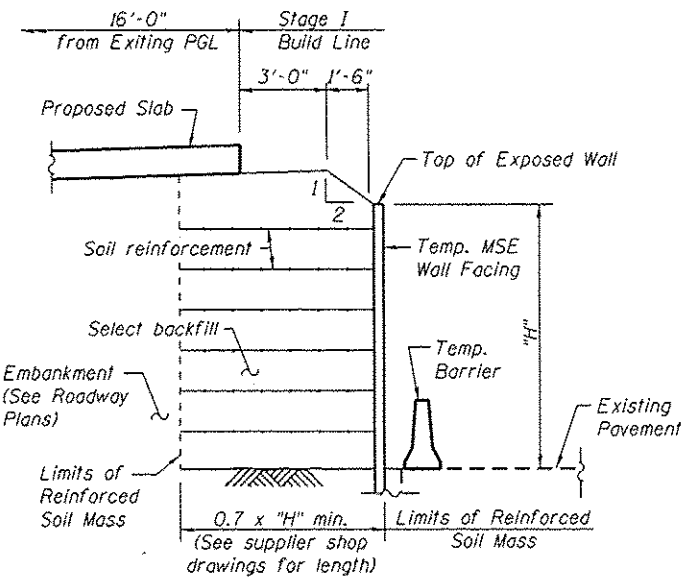
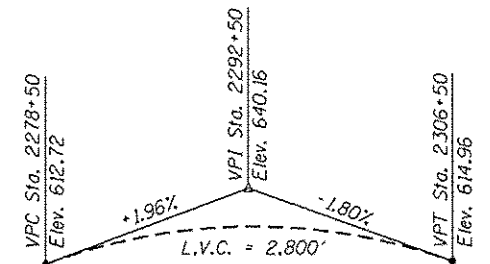
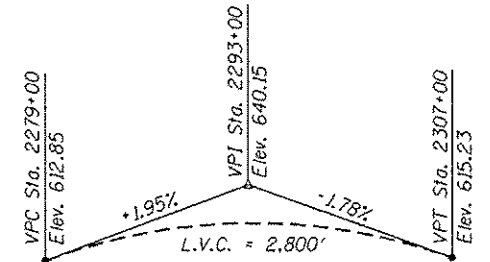
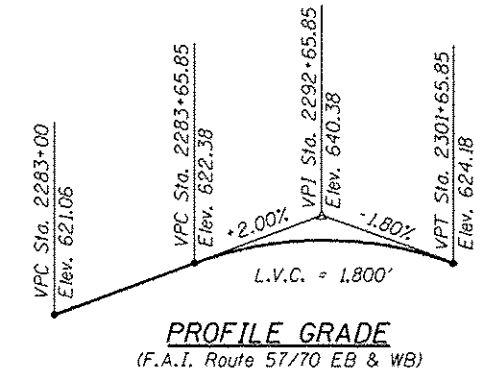
The Contractor is responsible for providing all applicable construction loads for the design of the Temporary MSE wall and temporary support system.

If the Contractor Provided Construction Loads exceed a single axle load of 16 tons or consist a total weight exceeding 36 tons, the Temporary Sheet Piling design shall be re-evaluated by the Engineer.

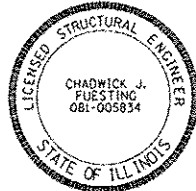
Hard driving may be encountered during installation of the temporary sheet piling. The Contractor shall take the necessary precautions to ensure the strength and stability of the sheet piling system.



Sta. 2283+50.00 to Sta. 2289+00.00 and Sta. 2297+90.00 to Sta. 2301+50.00 (WB)  
Sta. 2284+00.00 to Sta. 2289+00.00 and Sta. 2297+90.00 to Sta. 2302+50.00 (EB)

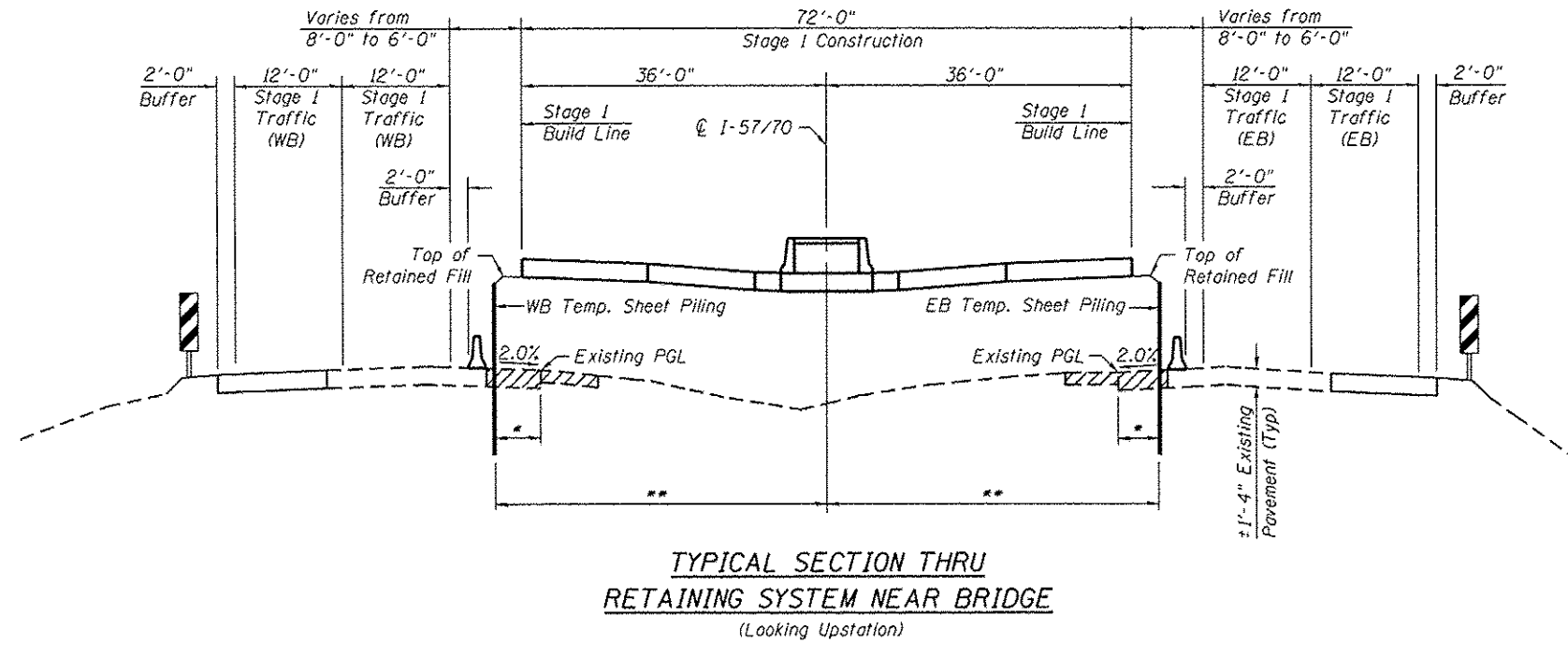


**DETAIL A**  
**TEMPORARY MSE WALL**



EXP. 11-30-2014

*Chadwick J. Fuesting 6/18/13*



\*Varies 20'-6" to 18'-0" (Sta. 2289+00.00 to Sta. 2290+80.00) (WB & EB)  
Varies 18'-0" to 20'-6" (Sta. 2296+10.00 to Sta. 2297+90.00) (WB & EB)  
18'-0" (Sta. 2290+80.00 to Sta. 2291+49.80 and Sta. 2295+87.62 to Sta. 2296+10.00) (WB)  
(Sta. 2290+80.00 to Sta. 2291+03.24 and Sta. 2295+41.05 to Sta. 2296+10.00) (EB)

\*\*Varies 40'-6" to 38'-0" (Sta. 2289+00.00 to Sta. 2290+80.00) (WB & EB)  
Varies 38'-0" to 40'-6" (Sta. 2296+10.00 to Sta. 2297+90.00) (WB & EB)  
38'-0" (Sta. 2290+80.00 to Sta. 2291+49.80 and Sta. 2295+87.62 to Sta. 2296+10.00) (WB)  
(Sta. 2290+80.00 to Sta. 2291+03.24 and Sta. 2295+41.05 to Sta. 2296+10.00) (EB)

**DESIGN SPECIFICATIONS**  
AASHTO Standard Specifications for Mechanically Stabilized Earth Walls  
2012 AASHTO LRFD Bridge Design Specifications, 6th Edition with 2012 Interims

**LOADING HL-93**  
Contractor Provided Construction Loads.  
Construction loads shall not exceed the HL-93 Loads

**TOTAL BILL OF MATERIAL**

Item	Unit	Total
Temporary Sheet Piling	Sq. Ft.	8863
Temporary Mechanically Stabilized Earth Retaining Wall	Sq. Ft.	5825