

GENERAL NOTES

BEFORE ORDERING PIPE CULVERTS OR PIPE DRAINS, THE CONTRACTOR SHALL CONSULT THE ENGINEER FOR EXACT LENGTHS.

FOR STABILIZATION, ALL TYPE III BARRICADES WILL REQUIRE A MINIMUM OF FOUR SAND BAGS PER BARRICADE.

SEEDING WILL NOT BE PERMITTED AT ANY TIME WHEN THE GROUND IS FROZEN, WET, OR IN AN UNTILLABLE CONDITION. LOCATIONS TO BE SEEDED WILL BE DETERMINED BY THE ENGINEER.

THE FINISHED EARTHWORK SHALL HAVE A VEGETATION SUSTAINING SOIL COVERING THE TOP FOUR INCHES (100 MILLIMETERS) IN AREAS TO BE SEEDED OR SODDED. THE VEGETATION SUSTAINING SOIL REQUIRED WILL NOT BE PAID FOR SEPARATELY BUT WILL BE INCLUDED IN THE COST OF FURNISHED EXCAVATION.

ALL ELEVATIONS REFERRING TO U.S.G.S. MEAN SEA LEVEL DATUM.

ABANDONED UNDERGROUND UTILITIES THAT CONFLICT WITH CONSTRUCTION SHALL BE DISPOSED OF OUTSIDE THE LIMITS OF THE RIGHT OF WAY ACCORDING TO ARTICLE 202.03 OF THE STANDARD SPECIFICATIONS AND AS DIRECTED BY THE ENGINEER. THIS WORK WILL NOT BE PAID FOR SEPARATELY, BUT WILL BE INCLUDED IN THE COST OF EARTH EXCAVATION.

ANY REFERENCE TO A STANDARD IN THESE PLANS SHALL BE INTERPRETED TO MEAN THE EDITION AS INDICATED BY THE SUBNUMBER SHOWN IN THE LIST OF STANDARDS OR THE COPY INCLUDED IN THESE PLANS.

THE FOLLOWING RATES OF APPLICATION HAVE BEEN USED IN CALCULATING PLAN QUANTITIES:

GRANULAR MATERIALS	2.05	TONS / CU YD
--------------------	------	--------------

THE WORK REQUIRED TO CONNECT ANY SEWER TO AN EXISTING DRAINAGE STRUCTURE OR PIPE WILL NOT BE PAID FOR SEPARATELY, BUT WILL BE CONSIDERED AS INCLUDED IN THE CONTRACT UNIT PRICE BID FOR THE SEWER ITEMS.

MEMBERS OF JULIE KNOWN TO BE WITHIN THE LIMITS OF THE IMPROVEMENT ARE:

EASTERN ILLINI ELECTRIC CORP.
FRONTIER
METRO COMMUNICATIONS

THE CONTRACTOR SHALL CONTACT JULIE AT LEAST 48 HOURS PRIOR TO EXCAVATION TO DETERMINE WHICH UTILITIES ARE IN THE AREA.

COMMITMENTS

STATE OF ILLINOIS
DEPARTMENT OF TRANSPORTATION
DISTRICT THREE
AS BUILT INFORMATION

SUPERVISING CONSTRUCTION FIELD ENGINEER

RESIDENT ENGINEER / TECHNICIAN

START & END DATES
OF CONSTRUCTION:

INSPECTORS:

STATE OF ILLINOIS
DEPARTMENT OF TRANSPORTATION
DISTRICT THREE

PREPARED BY: *Tom Benoit*
DISTRICT STUDIES & PLANS ENGINEER

DATE: 7-9-19

EXAMINED BY: *John V. ...*
DISTRICT CONSTRUCTION ENGINEER

Walter A. ...
DISTRICT MATERIALS ENGINEER

Tom ...
DISTRICT OPERATIONS ENGINEER

STATE OF ILLINOIS
DEPARTMENT OF TRANSPORTATION

GENERAL NOTES

SCALE: SHEET OF SHEETS STA. TO STA.

F.A.P. RTE.	SECTION	COUNTY	TOTAL SHEETS	SHEET NO.
840	(135)T	IROQUOIS	15	2
				CONTRACT NO. 66K34

MODEL: P:\csw\... FILE NAME: ...

CODE NO.	ITEM	UNIT	TOTAL QUANTITY	CONSTRUCTION CODE
				CONTRACT MAINTANCE
				100% STATE
				ROADWAY
				0043
				RURAL
20200100	EARTH EXCAVATION	CU YD	569	569
20700220	POROUS GRANULAR EMBANKMENT	CU YD	120	120
25000210	SEEDING, CLASS 2A	ACRE	0.05	0.05
25000400	NITROGEN FERTILIZER NUTRIENT	POUND	4	4
25000500	PHOSPHORUS FERTILIZER NUTRIENT	POUND	4	4
25000600	POTASSIUM FERTILIZER NUTRIENT	POUND	4	4
25100630	EROSION CONTROL BLANKET	SQ YD	220	220
44200050	WELDED WIRE REINFORCEMENT	SQ YD	150	150
44201037	CLASS B PATCHES, TYPE IV, 15 INCH	SQ YD	150	150
44201299	DOWEL BARS 1 1/2"	EACH	48	48
44213200	SAW CUTS	FOOT	364	364
44213204	TIE BARS 3/4"	EACH	18	18
48203037	HOT-MIX ASPHALT SHOULDERS, 10"	SQ YD	421	421
52200020	TEMPORARY SOIL RETENTION SYSTEM	SQ FT	697	697

Δ SPECIALITY ITEMS

MODEL: Default
 FILE: \\nlsr01\pub\baron.com\data\illinois.gov\PI\DOT\Documents\DOT_Offices\Dir\dtc_3\Projects\ID366K34\CADD\Drawings\66K34-cover.dgn

USER NAME = MARINIEJ	DESIGNED - RW	REVISED -
	DRAWN - RW	REVISED -
PLOT SCALE = 3,9370' / mm	CHECKED - TG	REVISED -
PLOT DATE = 7/9/2019	DATE - 6/6/2019	REVISED -

**STATE OF ILLINOIS
DEPARTMENT OF TRANSPORTATION**

SUMMARY OF QUANTITIES

SCALE: SHEET 1 OF 3 SHEETS STA. TO STA.

F.A.P. RTE.	SECTION	COUNTY	TOTAL SHEETS	SHEET NO.
840	(135)T	IROQUOIS	15	3
			CONTRACT NO. 66K34	
		ILLINOIS	FED. AID PROJECT	

CODE NO.	ITEM	UNIT	TOTAL QUANTITY	CONSTRUCTION CODE
				CONTRACT MAINTANCE
				100% STATE
				ROADWAY
				0043
				RURAL
61133200	FIELD TILE JUNCTION VAULTS, 3' DIA.	EACH	2	2
61140600	STORM SEWERS (SPECIAL), 18"	FOOT	104	104
67100100	MOBILIZATION	L SUM	1	1
70100405	TRAFFIC CONTROL AND PROTECTION, STANDARD 701321	EACH	1	1
70100450	TRAFFIC CONTROL AND PROTECTION, STANDARD 701201	L SUM	1	1
70100455	TRAFFIC CONTROL AND PROTECTION, STANDARD 701206	L SUM	1	1
70100500	TRAFFIC CONTROL AND PROTECTION, STANDARD 701326	L SUM	1	1
70106500	TEMPORARY BRIDGE TRAFFIC SIGNALS	EACH	1	1
70300100	SHORT TERM PAVEMENT MARKING	FOOT	62	62
70300150	SHORT TERM PAVEMENT MARKING REMOVAL	SQ FT	20	20
70400100	TEMPORARY CONCRETE BARRIER	FOOT	300	300
70400200	RELOCATE TEMPORARY CONCRETE BARRIER	FOOT	300	300
70600250	IMPACT ATTENUATORS, TEMPORARY (NON- REDIRECTIVE), TEST LEVEL 3	EACH	2	2
70600350	IMPACT ATTENUATORS, RELOCATE (NON- REDIRECTIVE), TEST LEVEL 3	EACH	2	2

MODEL: Default
 FILE: \\bls01c01.pw\pub\room\dat\illinois\pwr\WIDOT\Documents\DOT_Offices\Dir\dtc_3\Project\66K34\CADD\66K34\cover.dgn

USER NAME = woodshankr	DESIGNED - RW	REVISED -
	DRAWN - RW	REVISED -
PLOT SCALE = 100.0000' / in.	CHECKED - TG	REVISED -
PLOT DATE = 7/8/2019	DATE - 6/6/2019	REVISED -

**STATE OF ILLINOIS
DEPARTMENT OF TRANSPORTATION**

SUMMARY OF QUANTITIES

SCALE: SHEET 2 OF 3 SHEETS STA. TO STA.

F.A.P. RTE.	SECTION	COUNTY	TOTAL SHEETS	SHEET NO.
840	(135)T	IROQUOIS	15	4
			CONTRACT NO. 66K34	
		ILLINOIS	FED. AID PROJECT	

CODE NO.	ITEM	UNIT	TOTAL QUANTITY	CONSTRUCTION CODE	
				CONTRACT MAINTANCE	
				100% STATE ROADWAY	
				0043	RURAL
Δ 78001110	PAINT PAVEMENT MARKING - LINE 4"	FOOT	1240		1240
Δ 78001130	PAINT PAVEMENT MARKING - LINE 6"	FOOT	310		310
X0324079	EXISTING FIELD TILE REMOVAL	FOOT	107		107
X0327980	PAVEMENT MARKING REMOVAL - WATER BLASTING	SQ FT	487		487
X0358300	REMOVE AND RELAY END SECTIONS	EACH	1		1
X2130010	EXPLORATION TRENCH, SPECIAL	FOOT	200		200
X5000015	REMOVE AND RE-INSTALL PIPE CULVERTS	FOOT	8		8
Z0017099	DOWEL BAR ASSEMBLY	EACH	6		6
Z0030850	TEMPORARY INFORMATION SIGNING	SQ FT	42		42

Δ SPECIALITY ITEMS

MODEL: Default
FILE: h:\mfc_p\pub\harcourm.d\illinois.gov\PW\DOT\Documents\DOT_Offices\Dir\trct_3\Projects\ID366K34\CADD\Bals\66K34-cover.dgn

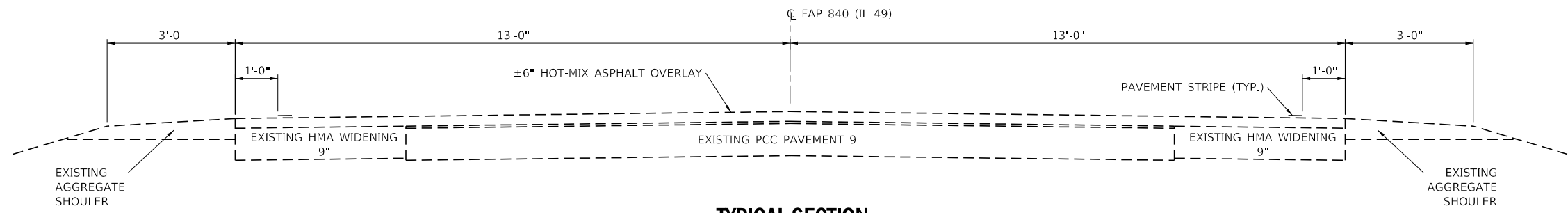
USER NAME = woodshankr	DESIGNED - RW	REVISED -
	DRAWN - RW	REVISED -
PLOT SCALE = 100.0000' / in.	CHECKED - TG	REVISED -
PLOT DATE = 7/8/2019	DATE - 6/6/2019	REVISED -

**STATE OF ILLINOIS
DEPARTMENT OF TRANSPORTATION**

SUMMARY OF QUANTITIES

SCALE: SHEET 3 OF 3 SHEETS STA. TO STA.

F.A.P. RTE.	SECTION	COUNTY	TOTAL SHEETS	SHEET NO.
840	(135)T	IROQUOIS	15	5
			CONTRACT NO. 66K34	
		ILLINOIS	FED. AID PROJECT	



TYPICAL SECTION

MODEL: Default
 FILE: h:\mhc\p\suplanroom\dat\illinois.gov\RW\DOT\Documents\DOT_Offices\District_3\Project\ID366K34\CADD\Bals\66K34-cover.dgn

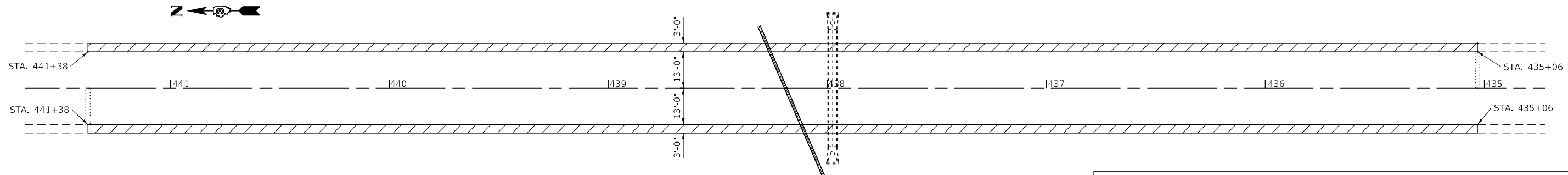
USER NAME = woodshankr1	DESIGNED - RW	REVISED -
	DRAWN - RW	REVISED -
PLOT SCALE = 100.0000' / in.	CHECKED - TG	REVISED -
PLOT DATE = 7/8/2019	DATE - 6/6/2019	REVISED -

**STATE OF ILLINOIS
 DEPARTMENT OF TRANSPORTATION**

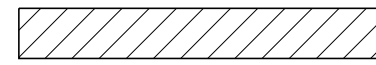
TYPICAL SECTION

SCALE: SHEET 1 OF 1 SHEETS STA. TO STA.

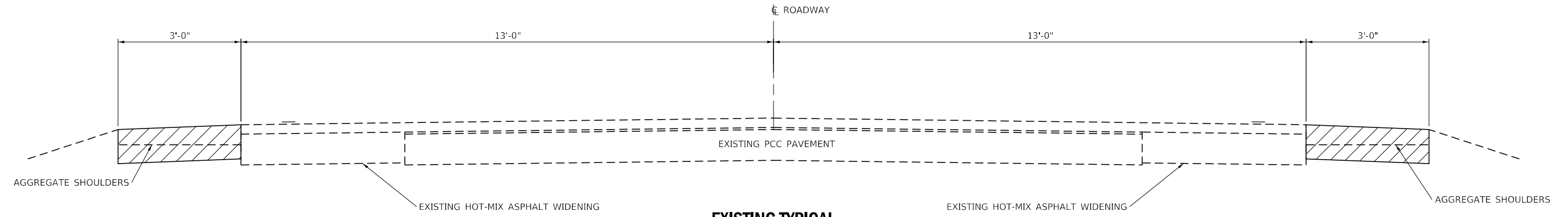
F.A.P. RTE.	SECTION	COUNTY	TOTAL SHEETS	SHEET NO.
840	(135)T	IROQUOIS	15	6
CONTRACT NO. 66K34			ILLINOIS FED. AID PROJECT	



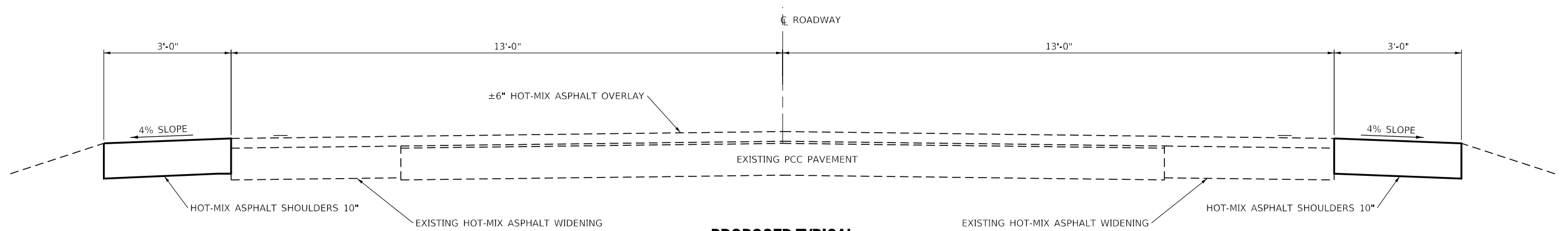
PLAN

 **EARTH EXCAVATION**

HMA MIXTURE REQUIREMENT TABLE		
LOCATION(S) :	SHOULDERS	
MIXTURE USE(S) :	BOTTOM LIFT(S)	TOP LIFT
BINDER GRADE (PG) :	PG64-22	PG64-22
DESIGN AIR VOIDS :	4.0% @ N50	4.0% @ N50
MIXTURE COMPOSITION: (MIXTURE GRADATION)	IL 19.0	IL 9.5FG
FRICITION AGGREGATE :		MIXTURE C
MIXTURE WEIGHT :	112.0 LB/SY/IN	112.0 LB/SY/IN
QUALITY MANAGEMENT PROGRAM :	QC/QA	QC/QA
SUBLOT SIZE :	N/A	N/A
DENSITY TEST METHOD :	CORES	CORES



EXISTING TYPICAL
STA. 435+06 TO STA. 441+38 LT. & RT.



PROPOSED TYPICAL
STA. 435+06 TO STA. 441+38 LT. & RT.

NOTE: ALL SHOULDER WORK SHALL BE COMPLETED PRIOR TO INSTALLING TRAFFIC CONTROL DEVICES FOR STAGE CONSTRUCTION WORK

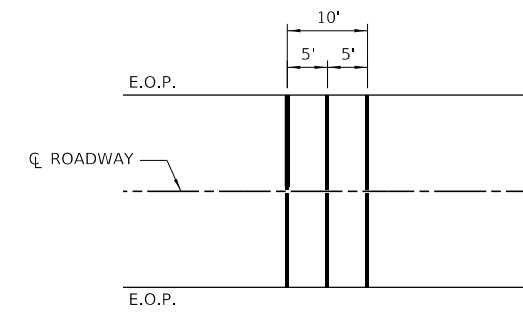
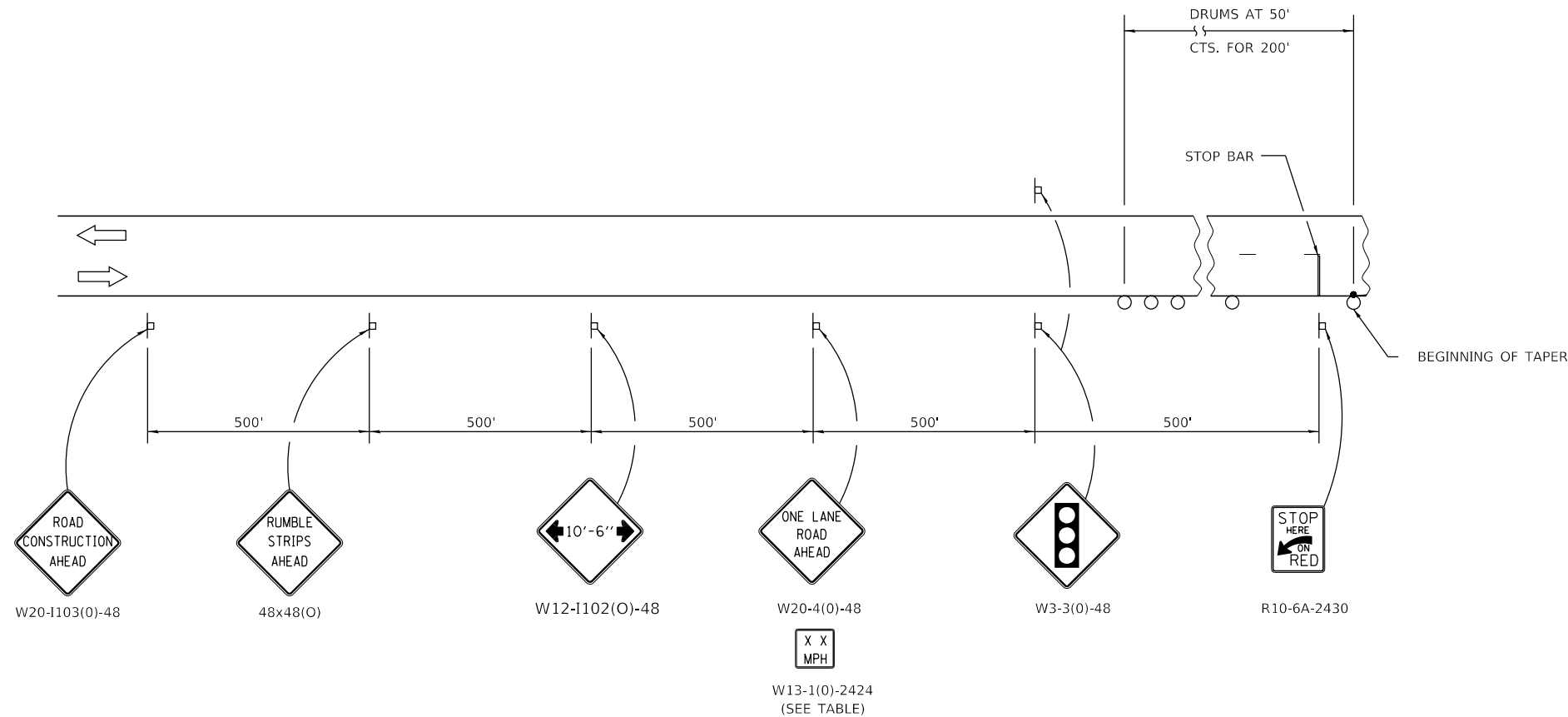
MODEL: Default
FILE: \\nas01c.pw.state.il.us\pub\aroom.d\at\links.gov\PI\DOT\Documents\DOT_Offices\District_3\Projects\ID366K34\CADD\Drawings\66K34-cover.dgn

USER NAME = woodshankr	DESIGNED - RW	REVISED -
	DRAWN - RW	REVISED -
PLOT SCALE = 100.0000' / in.	CHECKED - TG	REVISED -
PLOT DATE = 7/10/2019	DATE - 6/6/2019	REVISED -

STATE OF ILLINOIS
DEPARTMENT OF TRANSPORTATION

SHOULDER DETAILS			
SCALE:	SHEET	OF	SHEETS
	1	1	
	STA.		TO STA.

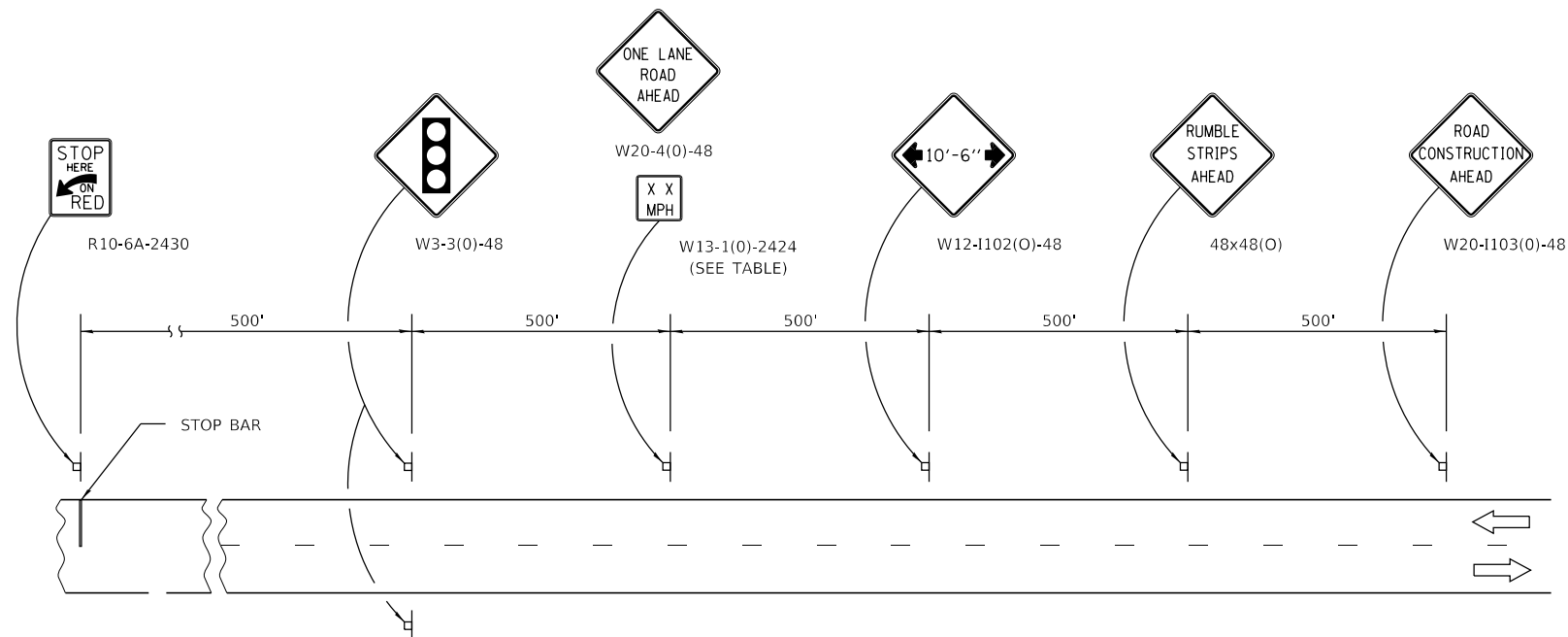
F.A.P. RTE.	SECTION	COUNTY	TOTAL SHEETS	SHEET NO.
840	(135)T	IROQUOIS	15	7
			CONTRACT NO. 66K34	
		ILLINOIS	FED. AID PROJECT	



TEMPORARY RUMBLE STRIP (SPECIAL)
SEE SPECIAL PROVISION

SYMBOLS

-  SIGN
-  DRUM
-  DRUM WITH STEADY BURNING BI-DIRECTIONAL LIGHT



MODEL: Default
 FILE: h:\mhc\pub\pubroom\dat\illinois.gov\PI\DOT\Documents\DOT_Offices\District_3\Projects\66K34\CADD\66K34\convr.dgn

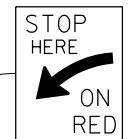
USER NAME = woodshankr	DESIGNED - RW	REVISED -
	DRAWN - RW	REVISED -
PLOT SCALE = 100.0000' / in.	CHECKED - TG	REVISED -
PLOT DATE = 7/8/2019	DATE - 6/6/2019	REVISED -

**STATE OF ILLINOIS
DEPARTMENT OF TRANSPORTATION**

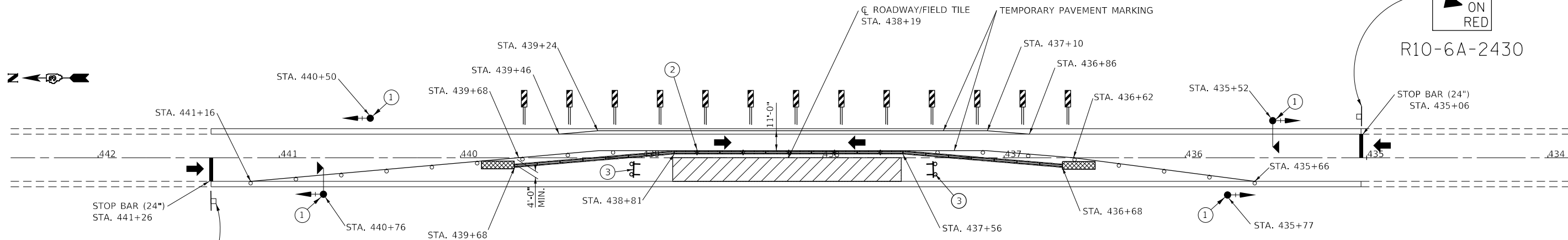
**TRAFFIC CONTROL AND PROTECTION,
STANDARD 701321 - ADVANCE SIGNING**

SCALE: SHEET 1 OF 3 SHEETS STA. TO STA.

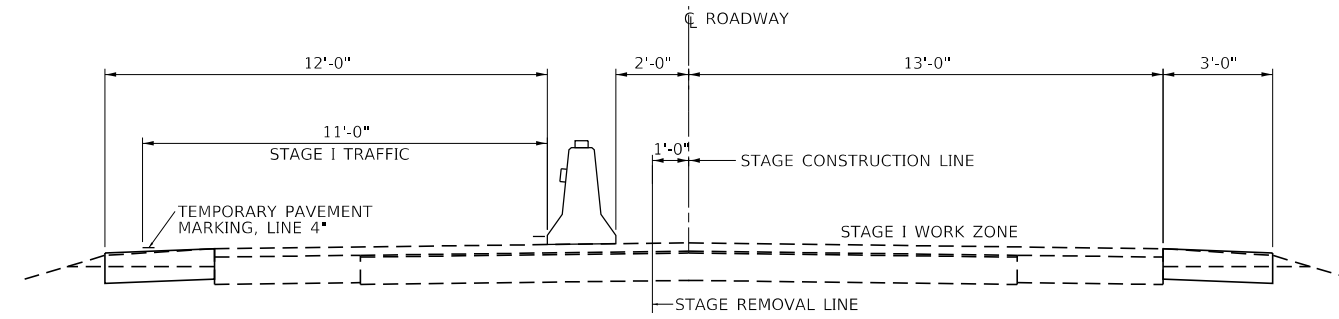
F.A.P. RTE.	SECTION	COUNTY	TOTAL SHEETS	SHEET NO.
840	(135)T	IROQUOIS	15	8
CONTRACT NO. 66K34			ILLINOIS FED. AID PROJECT	



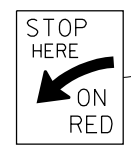
R10-6A-2430



PLAN



STAGE I

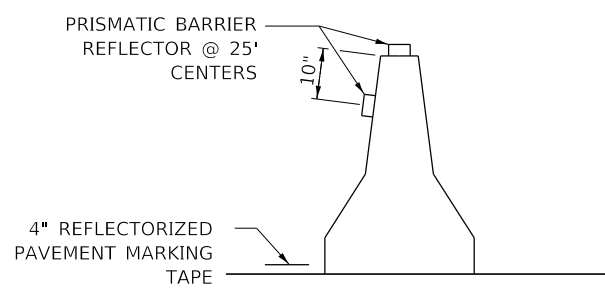


R10-6A-2430

TRAFFIC SIGNAL SEQUENCE						
PHASE	A			B		
INTERVAL	1	2	3	4	5	6
NORTHBOUND OR EASTBOUND	G	Y	R	R	R	R
SOUTHBOUND OR WESTBOUND	R	R	R	G	Y	R

TEMPORARY CONCRETE BARRIER	
NORMAL POSTED SPEED	TAPER RATIO
40 mph AND ABOVE	12:1
BELOW 40 mph	8:1

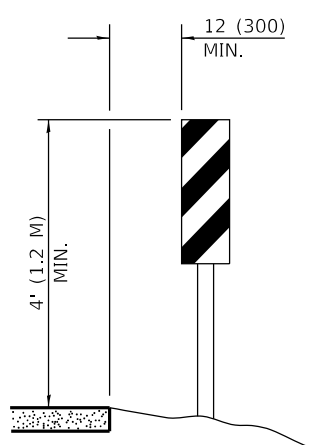
ADVISORY SPEED LIMIT	
NORMAL POSTED SPEED	ADVISORY SPEED
55 - 45 mph	40 mph
40 mph	35 mph
35 - 30 mph	30 mph



TEMPORARY CONCRETE BARRIER WALL DETAILS

SYMBOLS

- WORK AREA
- SIGN
- TYPE III BARRICADE WITH FLASHING LIGHTS
- TRAFFIC SIGNAL WITH BACKPLATE
- TEMPORARY IMPACT ATTENUATOR (NARROW)
- MICROWAVE DETECTOR
- DRUM WITH STEADY BURNING BI-DIRECTIONAL LIGHT (TAPERS)
- DRUM (TANGENTS)
- TEMPORARY CONCRETE BARRIER
- CRYSTAL, BIDIRECTIONAL GUARDRAIL/BARRIER WALL REFLECTOR



VERTICAL PANELS

(POST MOUNTED, ONE EACH SIDE)

- ① THE EDGE OF THE POST MOUNTED SIGNAL HEAD SHALL BE BETWEEN 24 (610) AND 6' (1.8 M) FROM EDGE OF SHOULDER.
- ② GUARDRAIL/BARRIER WALL REFLECTORS AT 25' (7.6 M) CTS. SEE STANDARDS 704001 & 782006.
- ③ TYPE III BARRICADE TO BE PLACED WHEN NO WORK IS BEING PERFORMED.

GENERAL NOTES

THIS STANDARD IS USED WHERE, AT ANY TIME, ANY VEHICLE, EQUIPMENT, WORKERS, OR THEIR ACTIVITIES WILL ENCROACH ON ONE LANE OF A BRIDGE. TRAFFIC SIGNALS AND A POSITIVE BARRIER ARE REQUIRED.

UNLESS OTHERWISE NOTED, "ALL" TRAFFIC CONTROL DEVICES AS SHOWN ON THESE STANDARDS SHALL NOT BE PAID FOR SEPARATELY BUT SHALL BE INCLUDED IN THE COST OF THE STANDARD.

TRAFFIC SIGNALS SHALL BE OPERATIONAL ONLY WHEN ALL TRAFFIC CONTROLS ARE IN PLACE. WHEN TRAFFIC SIGNALS ARE NOT IN OPERATION, FLAGGERS SHALL BE USED AND TRAFFIC CONTROL SHALL CONFORM TO STANDARD 701201 OR 701206.

TEMPORARY CONCRETE BARRIER SHALL BE ACCORDING TO STANDARD 704001.

EXISTING OR TEMPORARY PAVEMENT MARKINGS SHALL BE ON BOTH SIDES OF OPEN LANE FROM STOP BAR TO STOP BAR.

ALL DIMENSIONS ARE IN INCHES (MILLIMETERS) UNLESS OTHERWISE SHOWN.

TEMPORARY PAVEMENT MARKING AS SHOWN ON THIS DETAIL, SHALL NOT BE PAID FOR SEPARATELY BUT SHALL BE INCLUDED IN THE COST OF THE STANDARD.

THE ARROW ON THE BACKSIDE OF THE DIRECTIONAL INDICATOR BARRICADES MUST BE COVERED OR REMOVED. THIS WORK WILL NOT BE PAID FOR SEPARATELY, BUT WILL BE INCLUDED IN THE COST OF THE APPLICABLE TRAFFIC CONTROL STANDARD.

MODEL: Default
FILE: \\nas01\pub\baronm.d\at\illinois.gov\PI\DOT\Documents\DOT_Offices\DIR\trct_3\Projects\ID366K34\CADD\Drawings\66K34-cover.dgn

USER NAME = woodshankr	DESIGNED - RW	REVISED -
PLOT SCALE = 100.0000' / in.	DRAWN - RW	REVISED -
PLOT DATE = 7/8/2019	CHECKED - TG	REVISED -
	DATE - 6/6/2019	REVISED -

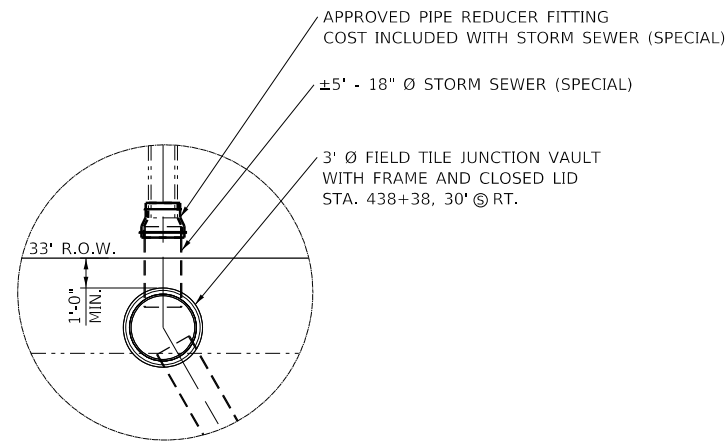
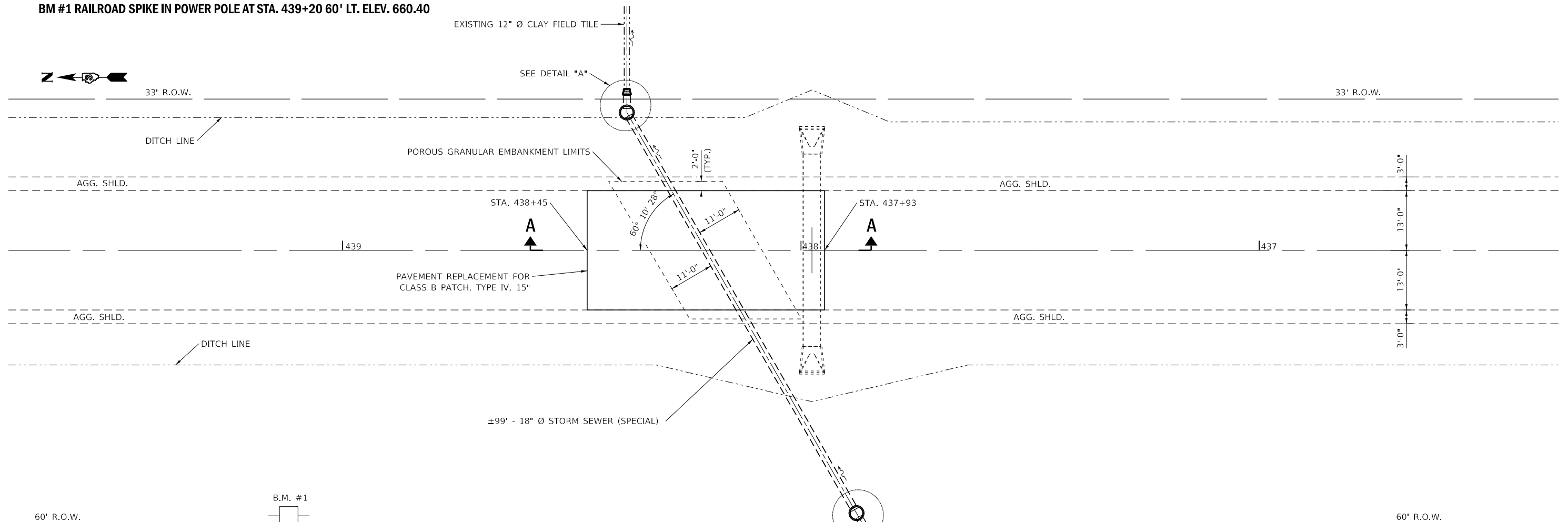
**STATE OF ILLINOIS
DEPARTMENT OF TRANSPORTATION**

**TRAFFIC CONTROL AND PROTECTION,
STANDARD 701321 - STAGE I**

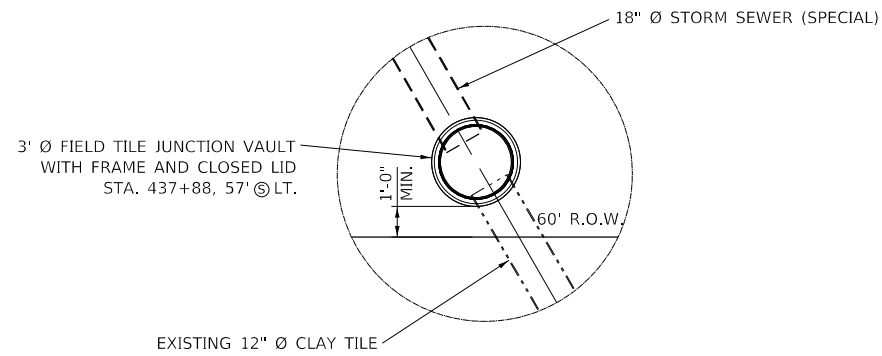
SCALE: SHEET 2 OF 3 SHEETS STA. TO STA.

F.A.P. RTE.	SECTION	COUNTY	TOTAL SHEETS	SHEET NO.
840	(135)T	IROQUOIS	15	9
CONTRACT NO. 66K34			ILLINOIS FED. AID PROJECT	

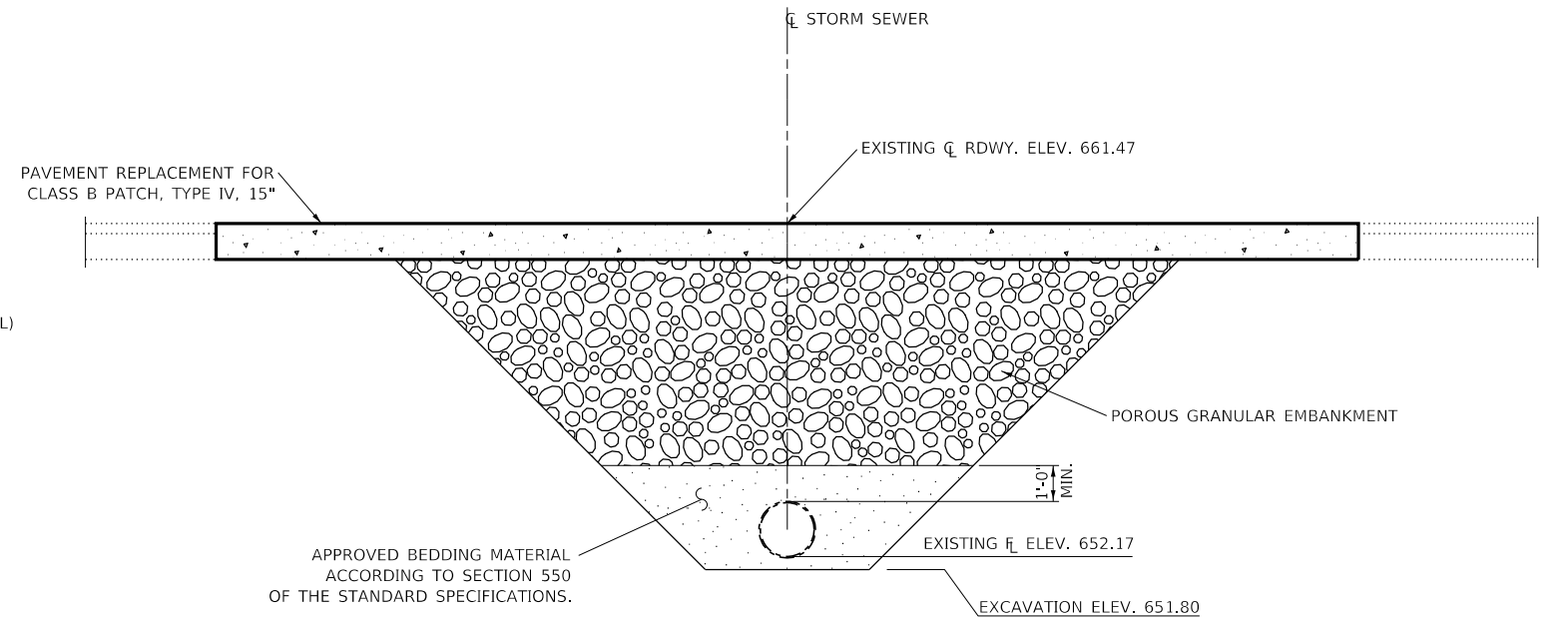
BM #1 RAILROAD SPIKE IN POWER POLE AT STA. 439+20 60' LT. ELEV. 660.40



DETAIL "A"



DETAIL "B"



PROPOSED SECTION A-A

MODEL: Default
 FILE: \\nas01c.pw.state.il.us\pub\aroom.d\at\illinois.gov\PW\DOT\Documents\DOT_Offices\Illinlet_3\Projects\ID366K34\CADD\66K34-cover.dgn

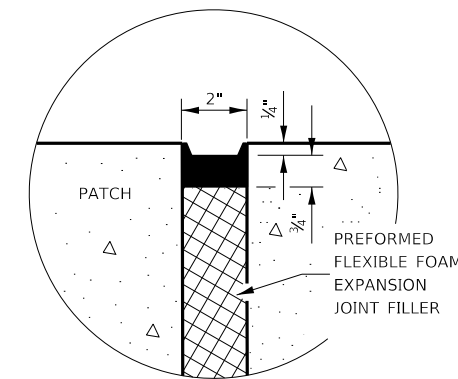
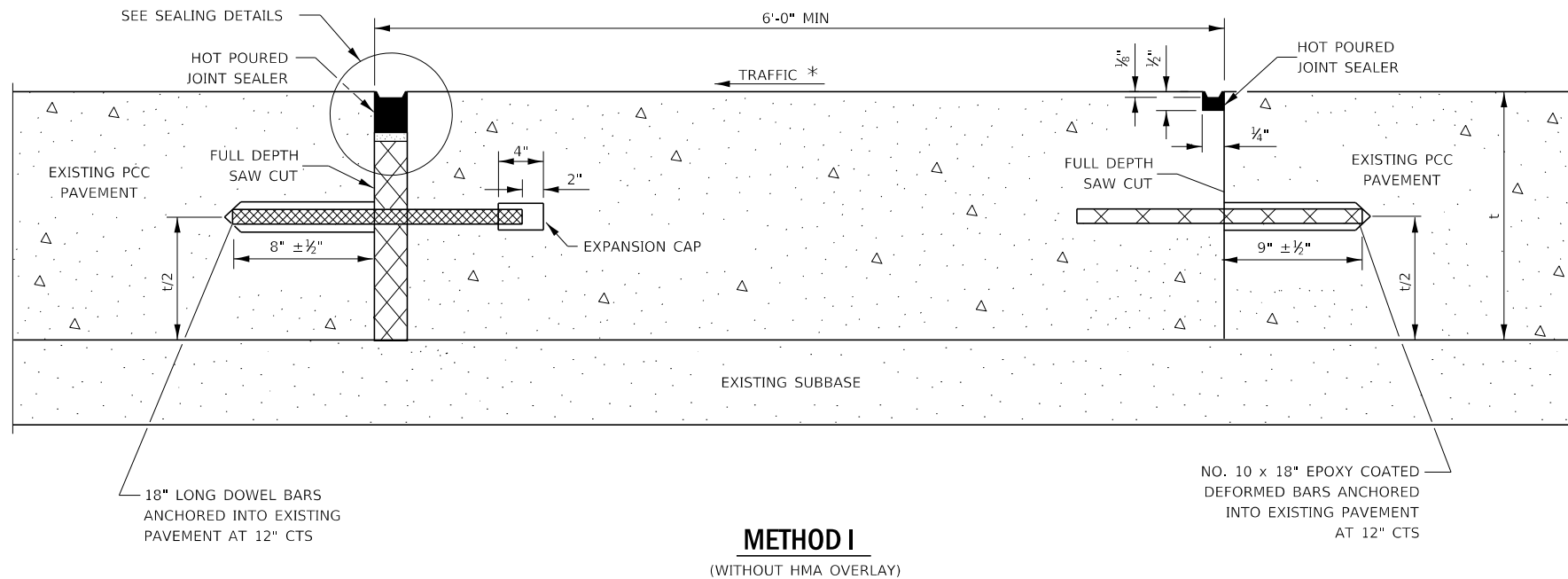
USER NAME = woodshankr	DESIGNED - RW	REVISED -
	DRAWN - RW	REVISED -
PLOT SCALE = 100,0000' / in.	CHECKED - TG	REVISED -
PLOT DATE = 7/8/2019	DATE - 6/6/2019	REVISED -

**STATE OF ILLINOIS
DEPARTMENT OF TRANSPORTATION**

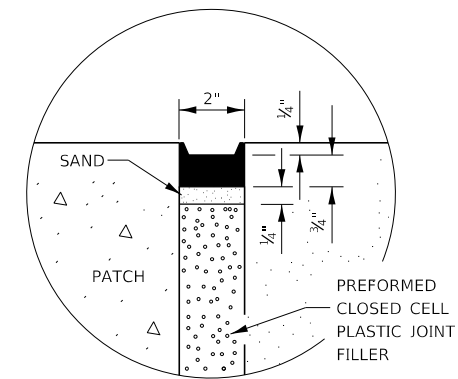
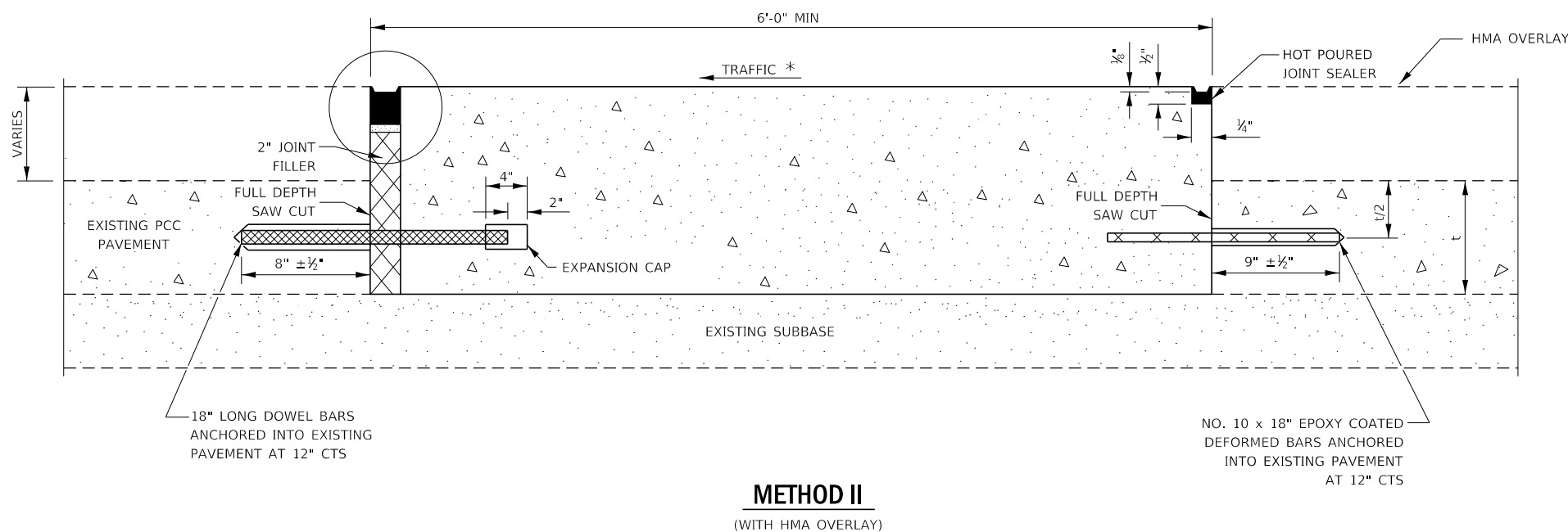
**SITE PLAN
PROPOSED DETAILS**

SCALE: SHEET 1 OF 1 SHEETS STA. TO STA.

F.A.P. RTE.	SECTION	COUNTY	TOTAL SHEETS	SHEET NO.
840	(135)T	IROQUOIS	15	12
CONTRACT NO. 66K34			ILLINOIS FED. AID PROJECT	



SEALING DETAIL



SEALING DETAIL

NOTE

* WHEN RE-ESTABLISHING A TRANSVERSE EXPANSION JOINT ON A TWO-WAY ROAD, REVERSE THE ORIENTATION OF THE DOWEL BARS WITH RESPECT TO TRAFFIC FOR ONE OF THE PATCHES SUCH THAT THE JOINT WILL BE CONTINUOUS ACROSS BOTH LANES.

MODEL: Default
FILE: h:\mhc\p\pub\haronom.dwg
PROJECT: I:\Projects\2019\66K34\66K34.dwg
DATE: 7/8/2019

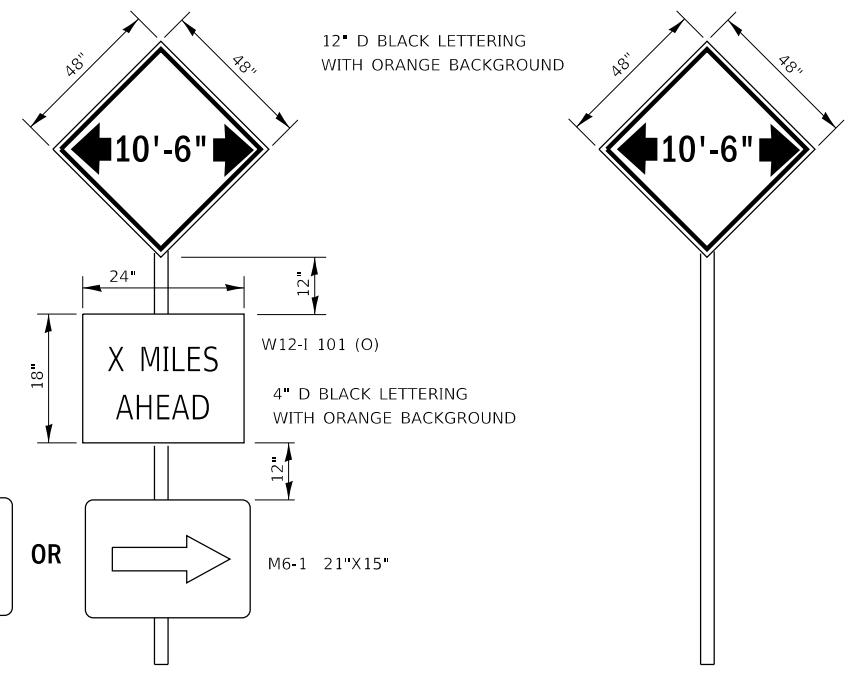
USER NAME = woodshankr1	DESIGNED - RW	REVISED -
	DRAWN - RW	REVISED -
PLOT SCALE = 100.0000' / in.	CHECKED - TG	REVISED -
PLOT DATE = 7/8/2019	DATE - 6/6/2019	REVISED -

STATE OF ILLINOIS
DEPARTMENT OF TRANSPORTATION

CLASS B PATCHING DETAILS

SCALE: SHEET 2 OF 2 SHEETS STA. TO STA.

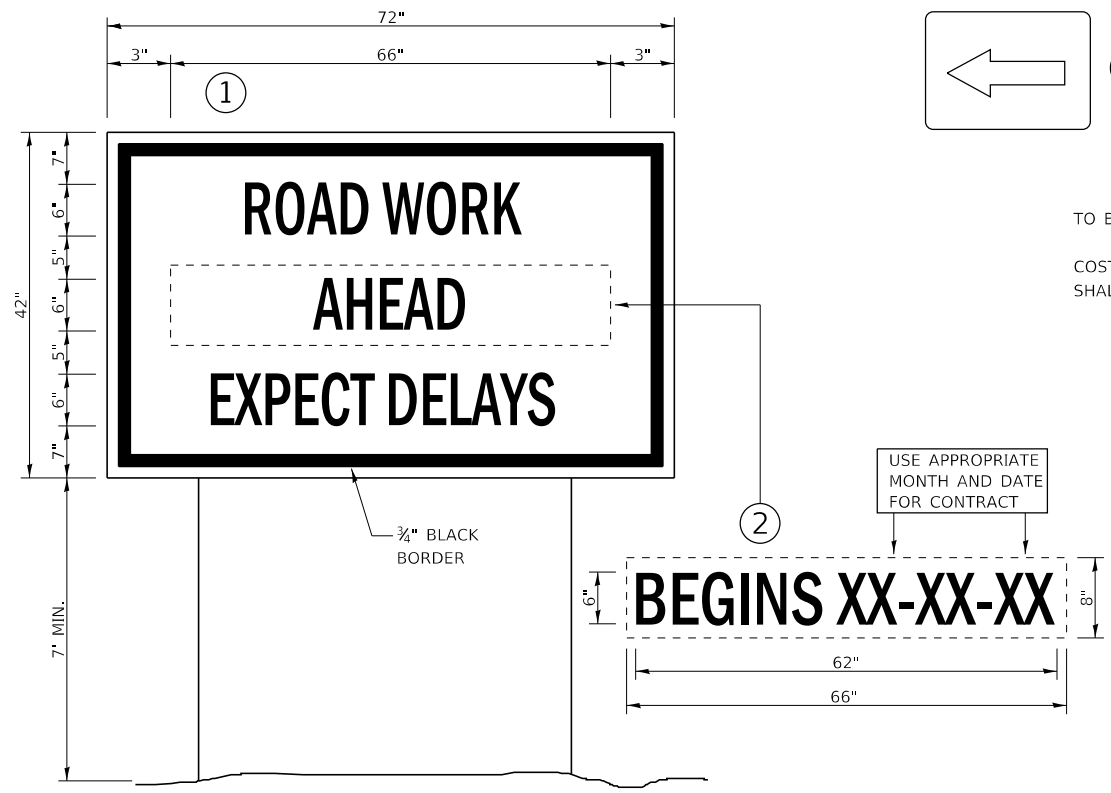
F.A.P. RTE.	SECTION	COUNTY	TOTAL SHEETS	SHEET NO.
840	(135)T	IROQUOIS	15	14
CONTRACT NO. 66K34			ILLINOIS FED. AID PROJECT	



TO BE POST MOUNTED AS SHOWN ELSEWHERE IN THE PLANS.

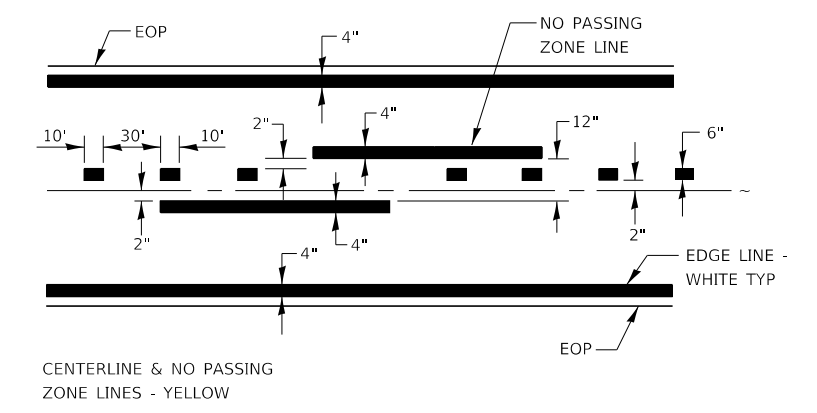
COST OF SUPPLYING, INSTALLING, MAINTAINING AND REMOVING WIDTH RESTRICTION SIGNS SHALL BE INCLUDED IN THE COST OF THE TRAFFIC CONTROL AND PROTECTION PAY ITEMS.

WIDTH RESTRICTION SIGNING DETAILS

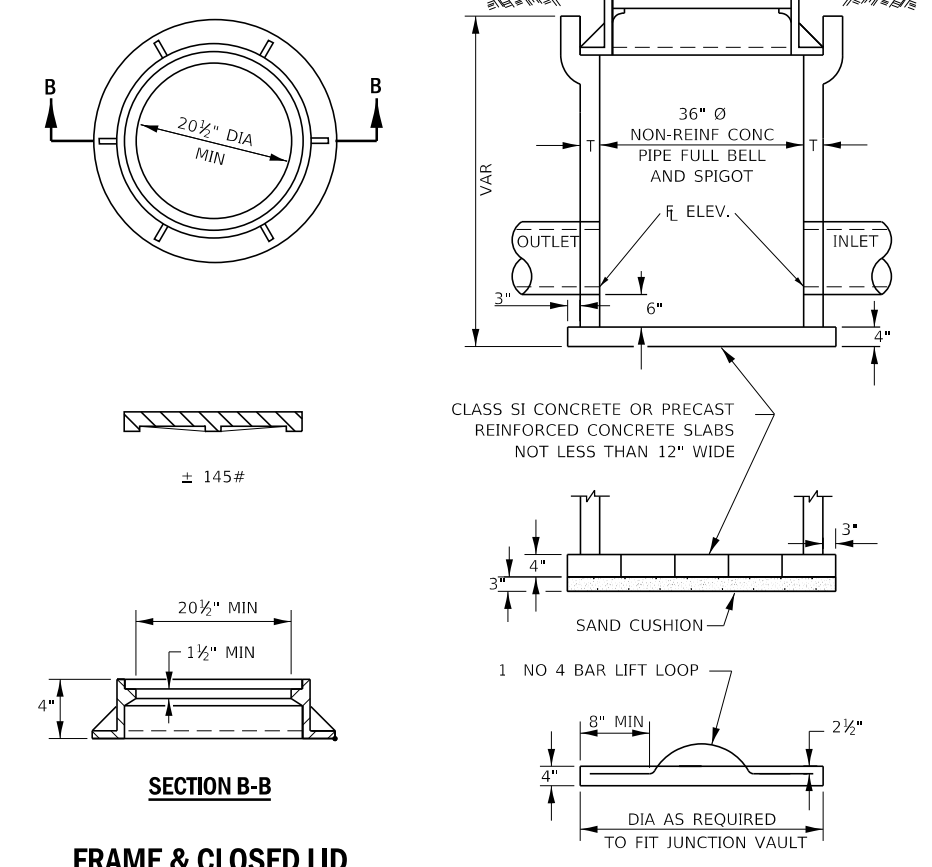


TEMPORARY INFORMATION SIGNING

- NOTES:**
- USE 6" D BLACK LETTERING ON FLUORESCENT ORANGE BACKGROUND.
 - ERECT SIGNS AT LOCATIONS IN ADVANCE OF THE "ROAD CONSTRUCTION AHEAD" SIGNS AS DIRECTED BY THE ENGINEER.
 - ERECT SIGN ① WITH INSTALLED PANEL ② A MINIMUM OF ONE WEEK PRIOR TO THE START OF THE LANE CLOSURE.
 - REMOVE PANEL ② ON THAT DATE.
 - SEE SPECIAL PROVISION "TEMPORARY INFORMATION SIGNING" FOR ADDITIONAL INFORMATION.
 - WILL BE PAID FOR PER SQ FT AS "TEMPORARY INFORMATION SIGNING". EACH SIGN = 21 SQ FT AND THE DATE PANEL ② WILL NOT BE MEASURED SEPARATELY FOR PAYMENT.



PAVEMENT MARKING



T	ALTERNATE MATERIALS FOR WALLS
4"	PRECAST REINFORCED CONCRETE RISERS
5"	CONCRETE MASONRY UNIT
6"	MONOLITHIC CONCRETE
8"	BUILDING BRICK, GRADE SW FROM CLAY OR SHALE
8"	CONCRETE BUILDING BRICK, GRADE A

- NOTES**
- THE CONTRACT UNIT PRICE FOR FIELD TILE JUNCTION VAULT SHALL INCLUDE THE COST OF FURNISHING AND PLACING THE FRAME AND GRATE OR PRECAST CONCRETE LID AND THE SAND CUSHION.
 - ALL FIELD TILE JUNCTION VAULTS SHALL BE 2'-0" IN DIAMETER UNLESS OTHERWISE NOTED ON THE PLANS.

MODEL: Default
FILE: 66k34.dwg
PLOT DATE: 7/12/2019
PLOT SCALE: 100.0000' / in.
DRAWN: RW
CHECKED: TG
DATE: 6/6/2019
DESIGNED: RW
REVISED: -
REVISED: -
REVISED: -
REVISED: -
REVISED: -
STATE OF ILLINOIS DEPARTMENT OF TRANSPORTATION
MISCELLANEOUS DETAILS
SCALE: SHEET 1 OF 1 SHEETS STA. TO STA.
F.A.P. RTE. SECTION COUNTY TOTAL SHEETS SHEET NO.
840 (135)T IROQUOIS 15 15
CONTRACT NO. 66K34
ILLINOIS FED. AID PROJECT