

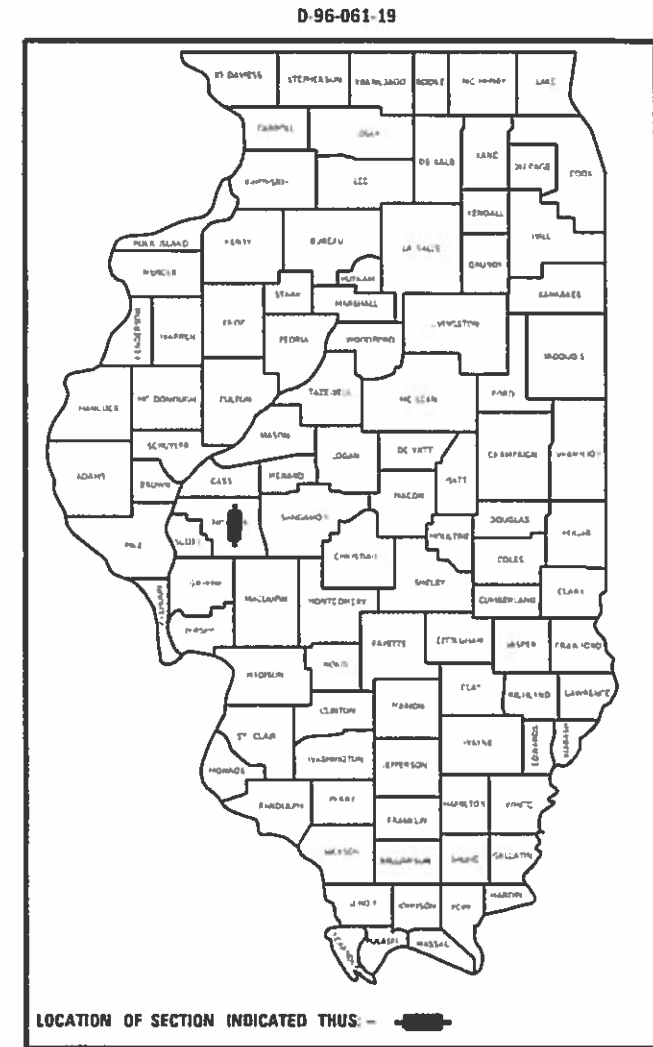
STATE OF ILLINOIS
DEPARTMENT OF TRANSPORTATION

F.A.P. SITE	SECTION	COUNTY	TOTAL SHEETS	SHEET NO.
10	(81) PP	MORGAN	6	1
		ILLINOIS	CONTRACT NO. 72L38	

FOR INDEX OF SHEETS, SEE SHEET NO. 2

PROPOSED CONTRACT MAINTENANCE

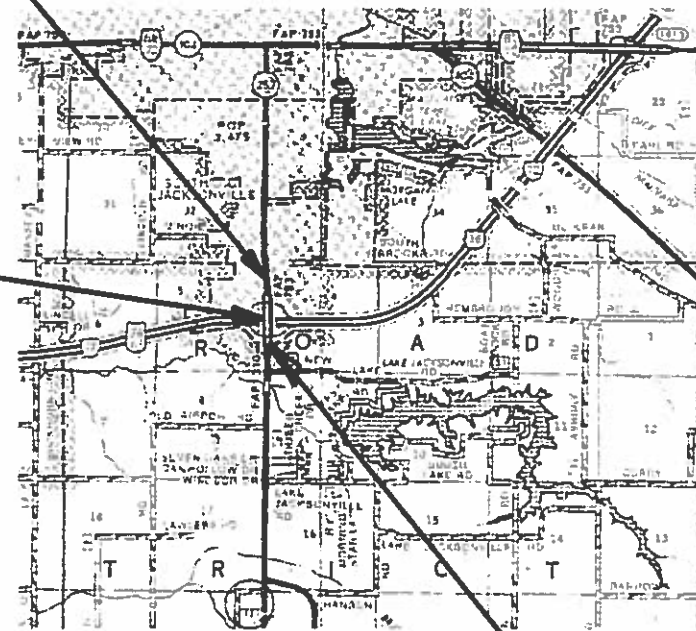
FAP 10 (IL ROUTE 267)
SECTION (81) PP
PAVEMENT PATCHING
MORGAN COUNTY



PROJECT BEGINNING
STA. 92 + 02.52

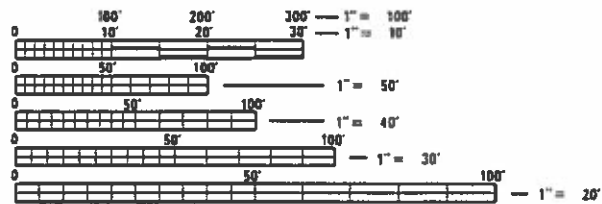
C-96-074-19

OMISSION
STA. 106 + 12.29 TO
STA. 108 + 67.00



PROJECT ENDING
STA. 114 + 00.00

ADT = 3,400
SU = 175
MU = 70



FULL SIZE PLANS HAVE BEEN PREPARED USING STANDARD ENGINEERING SCALES. REDUCED SIZED PLANS WILL NOT CONFORM TO STANDARD SCALES. IN MAKING MEASUREMENTS ON REDUCED PLANS, THE ABOVE SCALES MAY BE USED.

J.U.L.I.E.
JOINT UTILITY LOCATION INFORMATION FOR EXCAVATORS
1-800-892-0123
OR 811

PROJECT MANAGER: TIM SHARP, 217-524-9160
DESIGN ENGINEER: NKOSANE NOSAKHERE, 217-524-5010

GROSS LENGTH = 2197.48 FT. = 0.416 MILE
NET LENGTH = 1,942.77 FT. = 0.368 MILE

CONTRACT NO. 72L38

STATE OF ILLINOIS
DEPARTMENT OF TRANSPORTATION

SUBMITTED July 24 2019
[Signature] REGIONAL ENGINEER

Aug 14 2019
[Signature] ENGINEER OF DESIGN AND ENVIRONMENT

Aug 14 2019
[Signature] DIRECTOR OF HIGHWAYS PROJECT IMPLEMENTATION

PRINTED BY THE AUTHORITY
OF THE STATE OF ILLINOIS

INDEX OF SHEETS



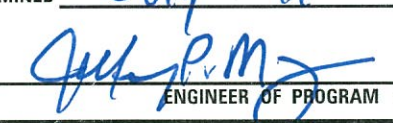
SHEET NO.	DESCRIPTION
1.	COVER SHEET
2.	INDEX OF SHEETS, STANDARDS, GENERAL NOTES & SIGNATURES
3.	SUMMARY OF QUANTITIES
4.	PLAN
5.	TYPICAL SECTIONS
6.	CLASS B RAMP PATCHING DETAIL

STANDARDS

STANDARD NO.	DESCRIPTION
442101-09	CLASS B PATCHES
442201-03	CLASS C & D PATCHES
701201-05	LANE CLOSURE, 2L, 2W, DAY ONLY, FOR SPEEDS > 45 MPH
701451-05	RAMP CLOSURE, FREEWAY / EXPRESSWAY
701456-05	PARTIAL EXIT RAMP CLOSURE FREEWAY/EXPRESSWAY
701501-06	URBAN LANE CLOSURE, 2L, 2W - UNDIVIDED
701901-08	TRAFFIC CONTROL DEVICES

NOTES

PATCH LOCATIONS DETERMINED IN THE FIELD BY THE ENGINEER.

STATE OF ILLINOIS DEPARTMENT OF TRANSPORTATION DIVISION OF HIGHWAYS DISTRICT 6	
EXAMINED <u>July 15</u> 20 <u>19</u>  ENGINEER OF OPERATIONS	
EXAMINED <u>7-18</u> 20 <u>19</u>  ENGINEER OF PROJECT IMPLEMENTATION	
EXAMINED <u>July 11</u> 20 <u>19</u>  ENGINEER OF PROGRAM DEVELOPMENT	

**STATE OF ILLINOIS
DEPARTMENT OF TRANSPORTATION**

**INDEX OF SHEETS, HIGHWAY STANDARDS,
GENERAL NOTES, & SIGNATURES**

F.A.P. RTE.	SECTION	COUNTY	TOTAL SHEETS	SHEET NO.
10	(81) PP	MORGAN	6	2
CONTRACT NO. 72L38				

SCALE: _____ SHEET ___ OF ___ SHEETS STA. _____ TO STA. _____

ILLINOIS FED. AID PROJECT

0-02174-6011
 100% STATE
 MORGAN
 ROADWAY
 0006
 URBAN

CODE NO.	ITEM	UNIT	TOTAL QUANTITY	
44200978	CLASS B PATCHES, TYPE I, 11 INCH	SQ YD	9.4	9.4
44200982	CLASS B PATCHES, TYPE II, 11 INCH	SQ YD	101	101
44201298	DOWEL BARS 1 1/4"	SQ YD	196	196
44201361	CLASS C PATCHES, TYPE I, 11 INCH	SQ YD	26	26
44201365	CLASS C PATCHES, TYPE II, 11 INCH	SQ YD	135	135
44201369	CLASS C PATCHES, TYPE III, 11 INCH	SQ YD	120	120
44201371	CLASS C PATCHES, TYPE IV, 11 INCH	SQ YD	550	550
44213204	TIE BARS 3/4"	EACH	222	222
67100100	MOBILIZATION	L SUM	1	1
70100450	TRAFFIC CONTROL AND PROTECTION, STANDARD 701201	L SUM	1	1
70100820	TRAFFIC CONTROL AND PROTECTION, STANDARD 701451	L SUM	1	1
70100825	TRAFFIC CONTROL AND PROTECTION, STANDARD 701456	L SUM	1	1
70102620	TRAFFIC CONTROL AND PROTECTION, STANDARD 701501	L SUM	1	1
70107025	CHANGEABLE MESSAGE SIGN	CAL DA	10	10

MODEL PATH: S:\COURTNAUT CAD\72L38.PBP JOB NO. 7271 MORGAN CO - PAVEMENT PATCHING PLANS 72L38.SHT.3.S02.dwg

USER NAME = sharpd	DESIGNED - _____	REVISED - _____
PLOT SCALE = 40 0000 / in.	DRAWN - _____	REVISED - _____
PLOT DATE = 7/17/2019	CHECKED - _____	REVISED - _____
	DATE - _____	REVISED - _____

**STATE OF ILLINOIS
 DEPARTMENT OF TRANSPORTATION**

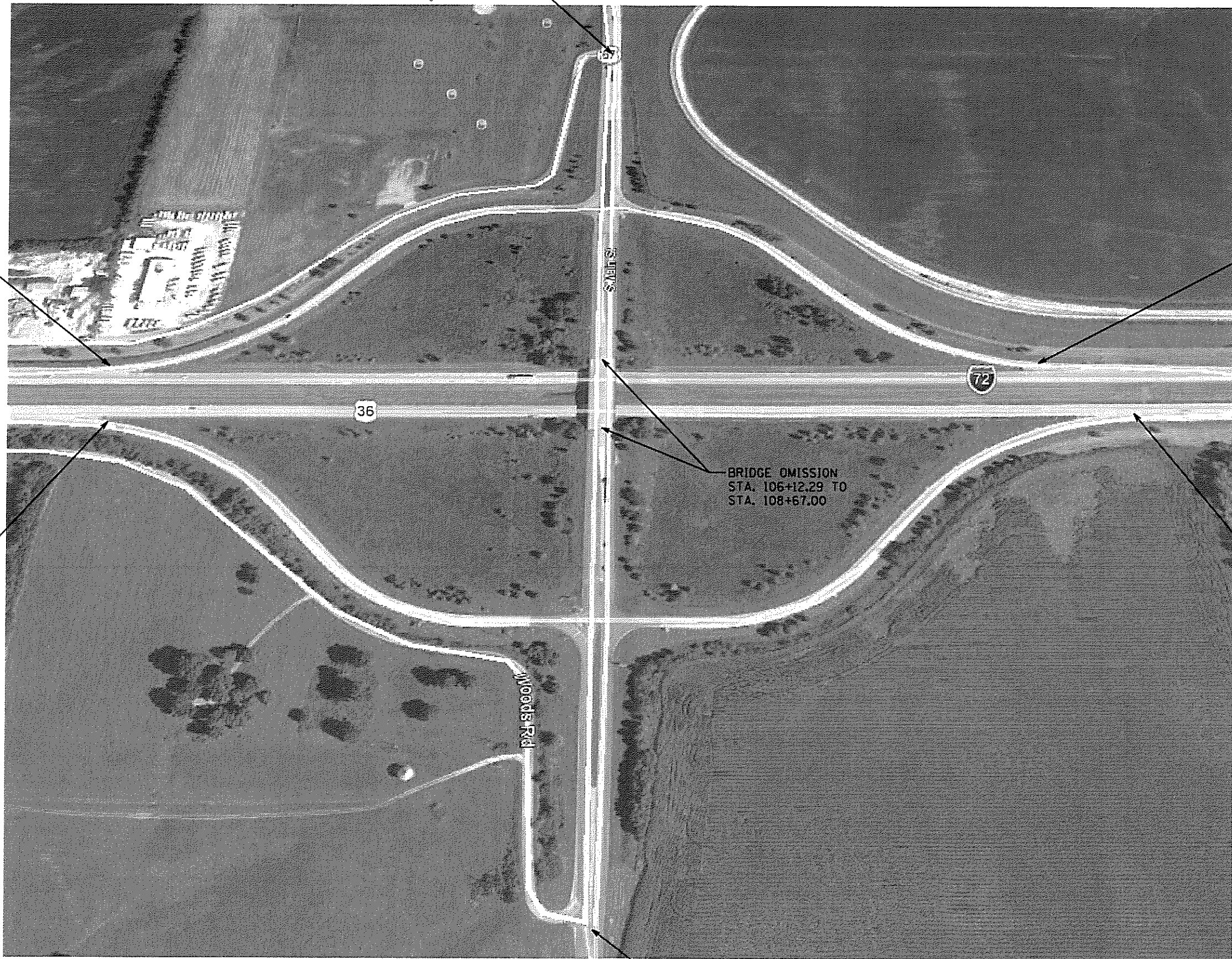
SUMMARY OF QUANTITIES

SCALE _____ SHEET ___ OF ___ SHEETS STA _____ TO STA _____

F.A.P. RTE.	SECTION	COUNTY	TOTAL SHEETS	SHEET NO.
10	(81) PP	MORGAN	6	3
			CONTRACT NO. 72L38	
ILLINOIS FED AID PROJECT				

BEGIN PROJECT
STA. 90+02.52

Loves (Next Road North)



END PATCHES
RAMP D

END PATCHES
RAMP C

END PATCHES
RAMP A

END PATCHES
RAMP B

BRIDGE OMISSION
STA. 106+12.29 TO
STA. 108+67.00

END PROJECT
STA. 114+00.00

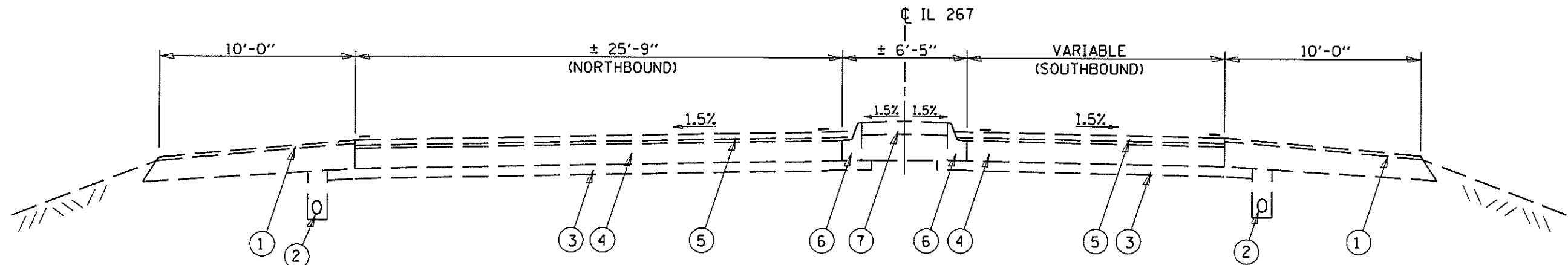
FILE NAME *	USER NAME = shorptd	DESIGNED - RT5	REVISED -
S:\CONTRMINT_CAD\72L38 -FAP 10 ILL 267	MORGAN CO. - PAVEMENT PATCHING PLANS\72L	DRAWN - JGRTS	REVISED -
Default	PLOT SCALE = 40,0000' / 1"	CHECKED -	REVISED -
	PLOT DATE = 7/15/2019	DATE - 04-01-14	REVISED -

STATE OF ILLINOIS
DEPARTMENT OF TRANSPORTATION

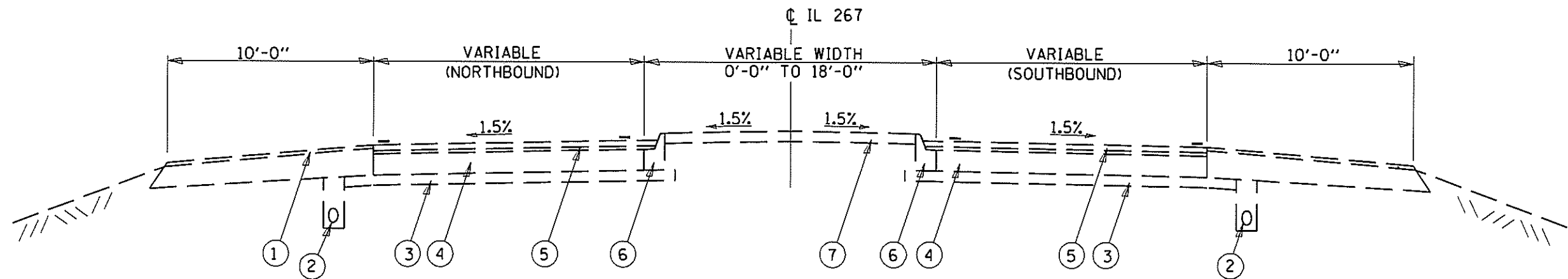
PLAN

SCALE: 1:50	SHEET 1	OF 6 SHEETS	STA.	TO STA.
-------------	---------	-------------	------	---------

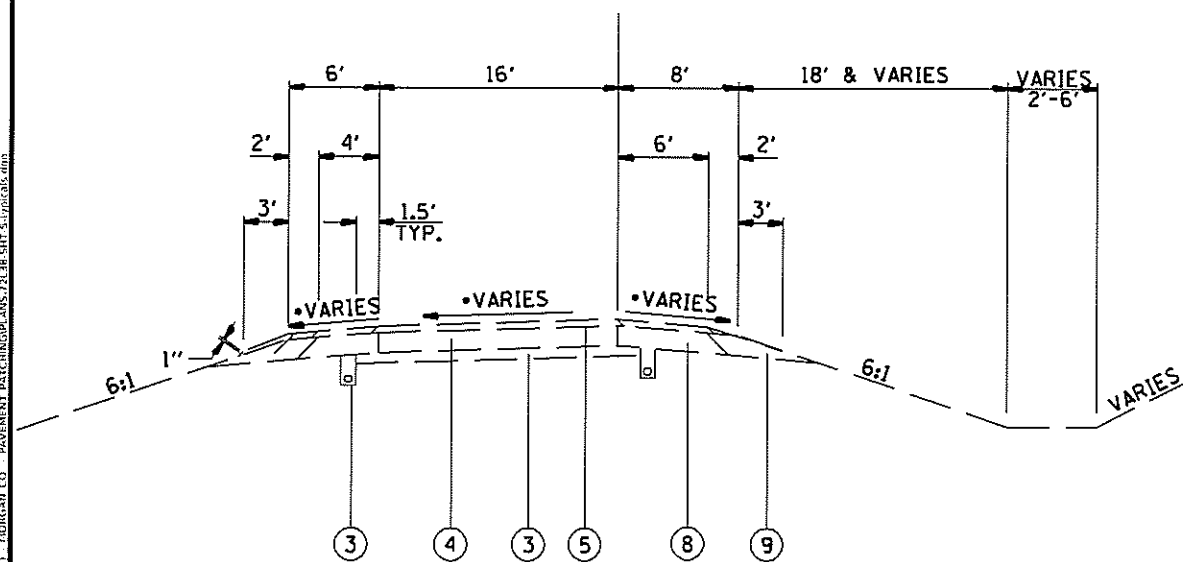
F.A.P. RTE.	SECTION	COUNTY	TOTAL SHEETS	SHEET NO.
10	9181 PP	MORGAN	6	4
CONTRACT NO. 72L38				
ILLINOIS FED. AID PROJECT				



STA. 99+50.00 TO STA. 106+12.29
(LOOKING SOUTH)



STA. 108+67.00 TO STA. 114+00.00
(LOOKING SOUTH)



RAMP TYPICAL SECTION

US ROUTE 67
 STA 6+62.40 TO STA 21+67.12 (RAMP A)
 STA 0+23.00 TO STA 15+53.12 (RAMP B)
 STA 6+62.40 TO STA 20+05.62 (RAMP C)
 STA 0+23.00 TO STA 15+53.74 (RAMP D)

LEGEND

- ① EXISTING HMA SHOULDERS,
- ② EXISTING PIPE UNDERDRAIN
- ③ EXISTING STABILIZED SUBBASE, 4"
- ④ EXISTING PCC PAVEMENT, 8"
- ⑤ EXISTING HMA SURFACE, 2 1/2"
- ⑥ EXISTING COMB. CONC. C & G,
- ⑦ EXISTING CONCRETE MEDIAN
- ⑧ EXISTING AGGREGATE SHOULDER
- ⑨ EXISTING STABILIZED SHOULDER, 8"

MODEL: D:\pav\...
 FILE NAME: S:\COURT\...
 USER: SHARPTD
 DATE: 7/15/2019

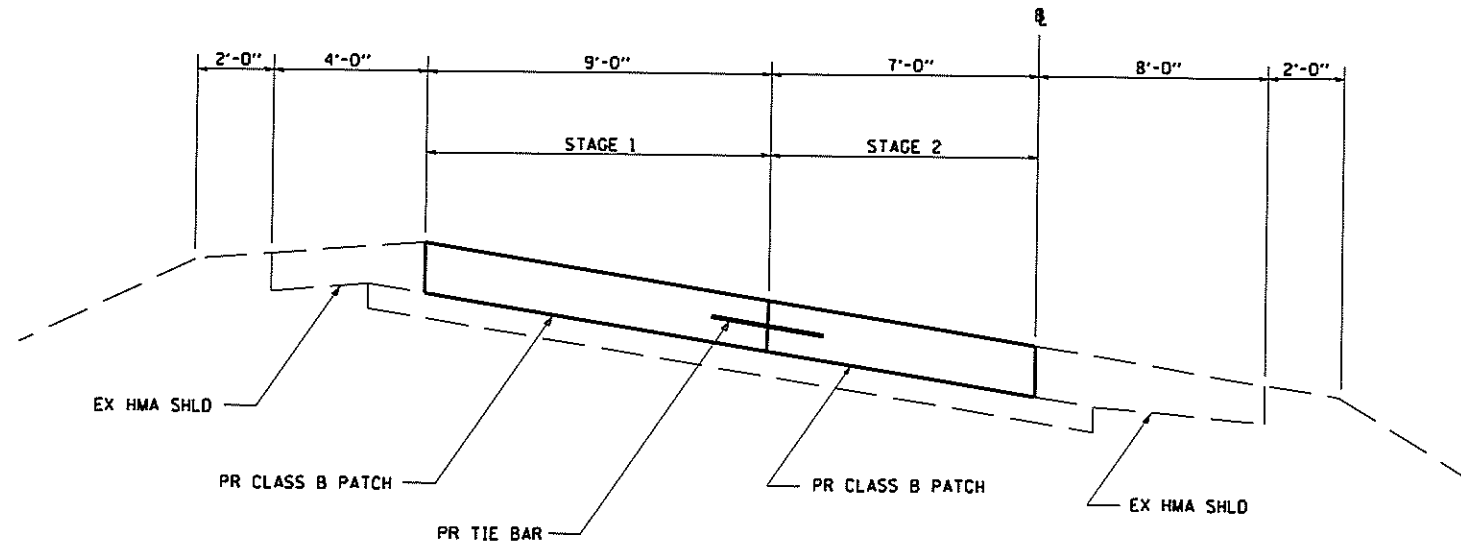
USER NAME = sharptd	DESIGNED - _____	REVISED - _____
PLOT SCALE = 40 0000' / in.	DRAWN - _____	REVISED - _____
PLOT DATE = 7/15/2019	CHECKED - _____	REVISED - _____
	DATE - _____	REVISED - _____

STATE OF ILLINOIS
DEPARTMENT OF TRANSPORTATION

TYPICAL SECTIONS

F.A.P. RTE.	SECTION	COUNTY	TOTAL SHEETS	SHEET NO.
10	(81) PP	MORGAN	6	5

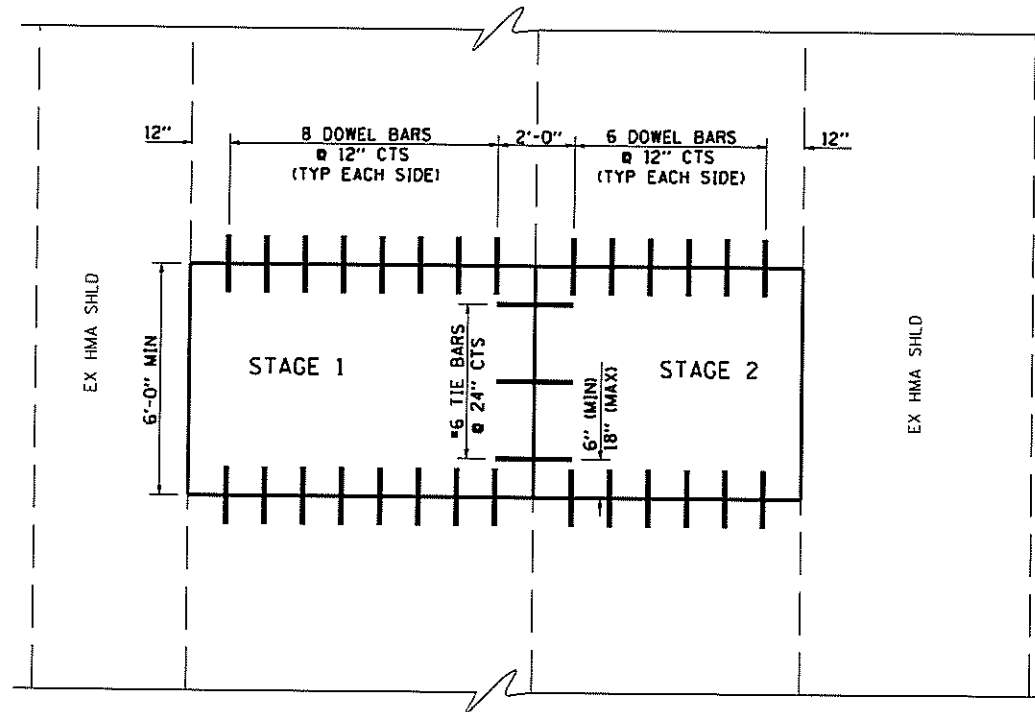
SCALE _____ SHEET _____ OF _____ SHEETS STA _____ TO STA _____ CONTRACT NO. 72L38



TYPICAL SECTION - CLASS B PATCH ON RAMPS

NOTE:

1. THIS DETAIL IS TO BE USED IN CONJUNCTION WITH STANDARD 442101.
2. TIE BARS SHALL BE NO. 6 DEFORMED BARS AT 24" CENTERS WHICH SHALL BE DRILLED AND GROUTED ACCORDING TO ARTICLE 420.05(b) OF THE STANDARD SPECIFICATIONS.



PLAN - CLASS B PATCH ON RAMPS

MODEL: Report
 FILE NAME: S:\COURTESY\DOT\72L38_PAP_10 (IL 707) - MORGAN CO - PAVEMENT PATCHING\PLANS\72L38_SUF 6 CLASS B PATCHING DETAILS ON RAMPS.dgn

USER NAME = sharptd	DESIGNED - _____	REVISED - _____
PLOT SCALE = 100 0000 / 1 in	DRAWN - _____	REVISED - _____
PLOT DATE = 7/15/2019	CHECKED - _____	REVISED - _____
	DATE - _____	REVISED - _____

**STATE OF ILLINOIS
DEPARTMENT OF TRANSPORTATION**

CLASS B PATCHING RAMP DETAILS

SCALE _____ SHEET _____ OF _____ SHEETS STA _____ TO STA _____

F.A.P. RTE.	SECTION	COUNTY	TOTAL SHEETS	SHEET NO.
10	(B1) PP	MORGAN	6	6
CONTRACT NO. 72L38				

ILLINOIS FED AID PROJECT