

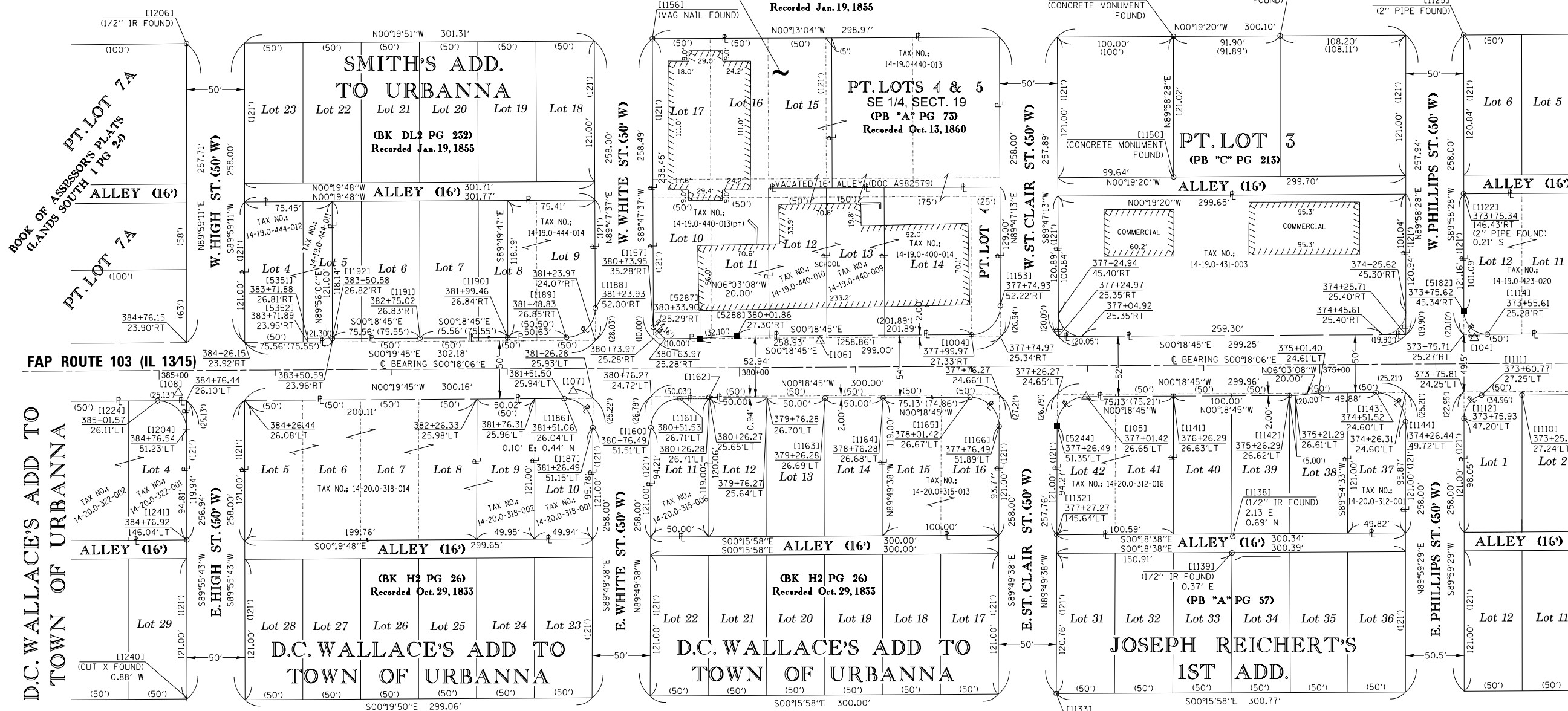
SEE LEGENDS, TOPOGRAPHIC STATEMENT, SURVEYORS NOTE(S) AND BASIS OF COORDINATES & BEARINGS STATEMENT ON SHEET 2

# BLOCK DETAIL

## SMITH'S ADD.

### TO URBANNA

(BK DL2 PG 232)  
Recorded Jan. 19, 1855



SPACE RESERVED FOR RECORDING OFFICER



**AUG. F. KLEIN'S ADD.**  
(PB 41 PG 6)  
Recorded Feb. 24, 1959

**KATIE BECKER'S 1ST ADD.**  
(PB 74 PG 42)  
Recorded Jan. 4, 1904

[PNT #]/DESCRIPTION	STATION	OFFSET	NORTH	EAST
[105]/(5/8") IR W/ALUMINUM ROW CAP FOUND	377+01.42	26.65'LT	641,313.6992	370,601.3835
[1132]/(5/8") IR W/CAP FOUND	377+27.27	145.64'LT	641,288.4807	370,720.5266
[1133]/(1/2") IR FOUND			641,288.0680	370,857.2960
[1138]/(1/2") IR FOUND			641,440.0490	370,721.8360
[1139]/(1/2") IR FOUND			641,439.3350	370,736.0820
[1141]/(5/8") IR W/CAP FOUND	376+26.29	26.63'LT	641,388.8265	370,600.9894
[1142]/IR W/CAP FOUND	375+26.29	26.62'LT	641,488.8251	370,600.4439
[1143]/(5/8") IR W/ALUMINUM ROW CAP FOUND	374+51.52	24.60'LT	641,563.5876	370,598.0360
[1144]/(5/8") IR W/ALUMINUM ROW CAP FOUND	374+26.44	49.72'LT	641,588.8010	370,623.0268
[1146]/CONCRETE MONUMENT FND			641,480.8180	370,290.5640
[1147]/CONCRETE MONUMENT FND			641,388.9210	370,291.0630
[1150]/CONCRETE MONUMENT FND			641,389.0080	370,412.0810
[1153]/(5/8") IR W/ALUMINUM ROW CAP FOUND	377+74.93	52.22'RT	641,239.7820	370,522.9160
[1004]/(5/8") IR W/ALUMINUM ROW CAP FOUND	377+99.97	27.33'RT	641,214.8671	370,547.9369
[1156]/MAG NAIL FOUND SW CORNER LOT 17			640,939.9500	370,292.9390
[1157]/(5/8") IR W/ALUMINUM ROW CAP FOUND	380+73.95	35.28'RT	640,940.8457	370,541.4309
[1160]/(5/8") IR W/ALUMINUM ROW CAP FOUND	380+76.49	51.51'LT	640,938.7692	370,628.2333
[1161]/(5/8") IR W/ALUMINUM ROW CAP FOUND	380+51.53	26.71'LT	640,963.5936	370,603.3084
[1162]/IR FND IN LANDSCAPING	380+26.40	25.49'LT	640,988.7190	370,601.9520
[1163]/(5/8") IR W/CAP FOUND	379+26.28	26.69'LT	641,088.8413	370,602.6252
[1164]/(5/8") IR W/CAP FOUND	378+76.28	26.68'LT	641,138.8404	370,602.3524

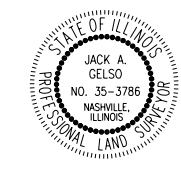
[PNT #]/DESCRIPTION	STATION	OFFSET	NORTH	EAST
[1165]/(5/8") IR W/ALUMINUM ROW CAP FOUND	378+01.42	26.67'LT	641,213.6993	370,601.9440
[1166]/(5/8") IR W/ALUMINUM ROW CAP FOUND	377+76.49	51.89'LT	641,238.7624	370,627.0378
[1186]/BENT (5/8") IR FOUND	381+51.06	26.04'LT	640,864.0660	370,603.1610
[1187]/(5/8") IR W/ALUMINUM ROW CAP FOUND	381+26.49	51.15'LT	640,888.7693	370,628.1405
[1188]/(5/8") IR W/ALUMINUM ROW CAP FOUND	381+23.93	52.00'RT	640,890.7860	370,524.9770
[1189]/(5/8") IR W/ALUMINUM ROW CAP FOUND	381+48.83	26.85'RT	640,866.0157	370,550.2531
[1190]/(5/8") IR W/CAP FOUND	381+99.46	26.84'RT	640,815.3891	370,550.5293
[1191]/(5/8") IR W/CAP FOUND	382+75.02	26.83'RT	640,739.8302	370,550.9415
[1192]/(5/8") IR W/CAP FOUND	383+50.58	26.82'RT	640,664.2718	370,551.3537
[5244]/IR SET-EXISTING ROW	377+26.49	51.38'LT	641,288.7651	370,626.2595
[5287]/IR SET-EXISTING ROW	380+33.90	25.29'RT	640,980.9539	370,551.2130
[5288]/IR SET-EXISTING ROW	380+01.86	27.30'RT	641,012.9801	370,549.0383
[5351]/DEDICATED-PR ROW	383+71.88	26.81'RT	640,642.9719	370,551.4699
[5352]/DEDICATED ROW	383+71.89	23.95'RT	640,642.9752	370,554.3328
LOT CORNER	384+26.15	23.92'RT	640,588.7163	370,554.6446
LOT CORNER	384+26.44	26.08'LT	640,588.6864	370,604.6456
PROPERTY CORNER	374+25.71	25.40'RT	641,589.1317	370,547.8959
PROPERTY CORNER	377+24.97	25.35'RT	641,289.8813	370,549.5284
PROPERTY CORNER	383+50.59	23.96'RT	640,664.2751	370,554.2104
LOT CORNER & EX ROW	384+26.44	26.08'LT	640,588.6864	370,604.6456
LOT CORNER & EX ROW	384+76.15	23.90'RT	640,538.7164	370,554.9319
LOT CORNER	384+76.44	26.10'LT	640,538.6867	370,604.9329

STATE OF ILLINOIS )  
COUNTY OF WASHINGTON )

I, JACK A. GELSO, AN ILLINOIS PROFESSIONAL LAND SURVEYOR, CERTIFY THAT I HAVE SURVEYED THE PLAT OF HIGHWAY SECTION (27, 25, 38, 56) RS ST. CLAIR COUNTY FOR THE CURRENT ILLINOIS MINIMUM STANDARDS FOR A BOUNDARY SURVEY FOR THE PROPOSED PARCELS TO BE ACQUIRED BY THE STATE OF ILLINOIS, DEPARTMENT OF TRANSPORTATION, SHOWN HEREON.

DATED 12/6/2018

JACK A. GELSO, PLS NO. 3786  
LICENSE EXPIRATION DATE: 11/30/2020



**API Survey LLC**  
1145 N. Mockingbird Road  
P.O. Box 333  
Nashville, Illinois 62263  
Fax 618-478-9001  
Ph. 618-478-9000  
Email: gary@apisurvey.com  
IDPR Design Firm License No. 184-006526

ILLINOIS DEPARTMENT OF TRANSPORTATION  
PLAT OF HIGHWAYS

FAP ROUTE 103 (IL 13/15)  
SECTION (27, 25, 38, 56) RS  
ST. CLAIR COUNTY  
JOB NO. R-98-009-17

STATION 375+00 TO STATION 385+00

SCALE: 1" = 100' SHEET 18 OF 21

ILLINOIS DEPARTMENT OF TRANSPORTATION  
OFFICE OF HIGHWAYS PROJECT IMPLEMENTATION/REGION 5/DISTRICT 8  
1102 EASTPORT PLAZA DRIVE  
COLLINSVILLE, ILLINOIS 62234-6198

F.A.P. RTE.	SECTION	COUNTY	TOTAL SHEETS	SHEET NO.
103	(27, 25, 38, 56) RS	ST. CLAIR	87	42

COMPLETION DATE OF FIELD WORK PERFORMED	
LAND SURVEY: 8/22/2018	ROW STAKING:

FED. ROAD DIST. NO. 8 ILLINOIS FED. AID PROJECT