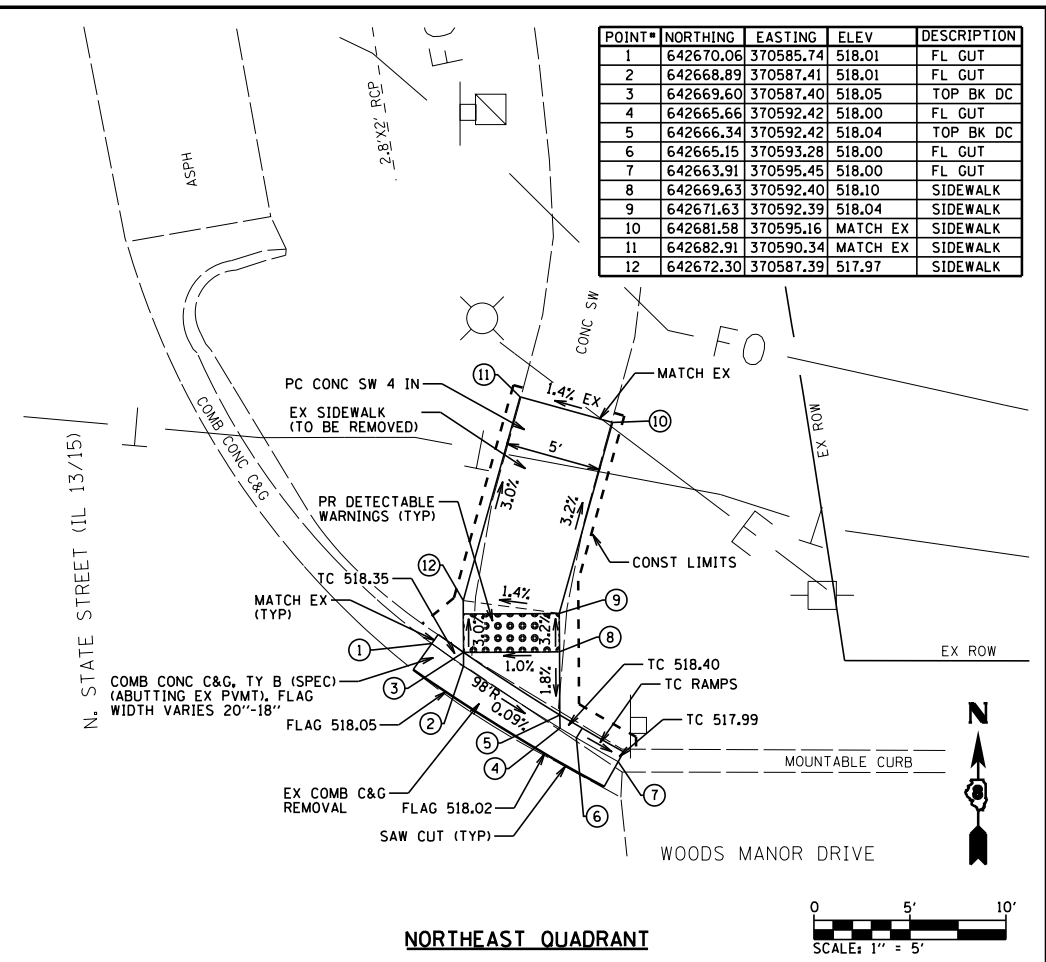
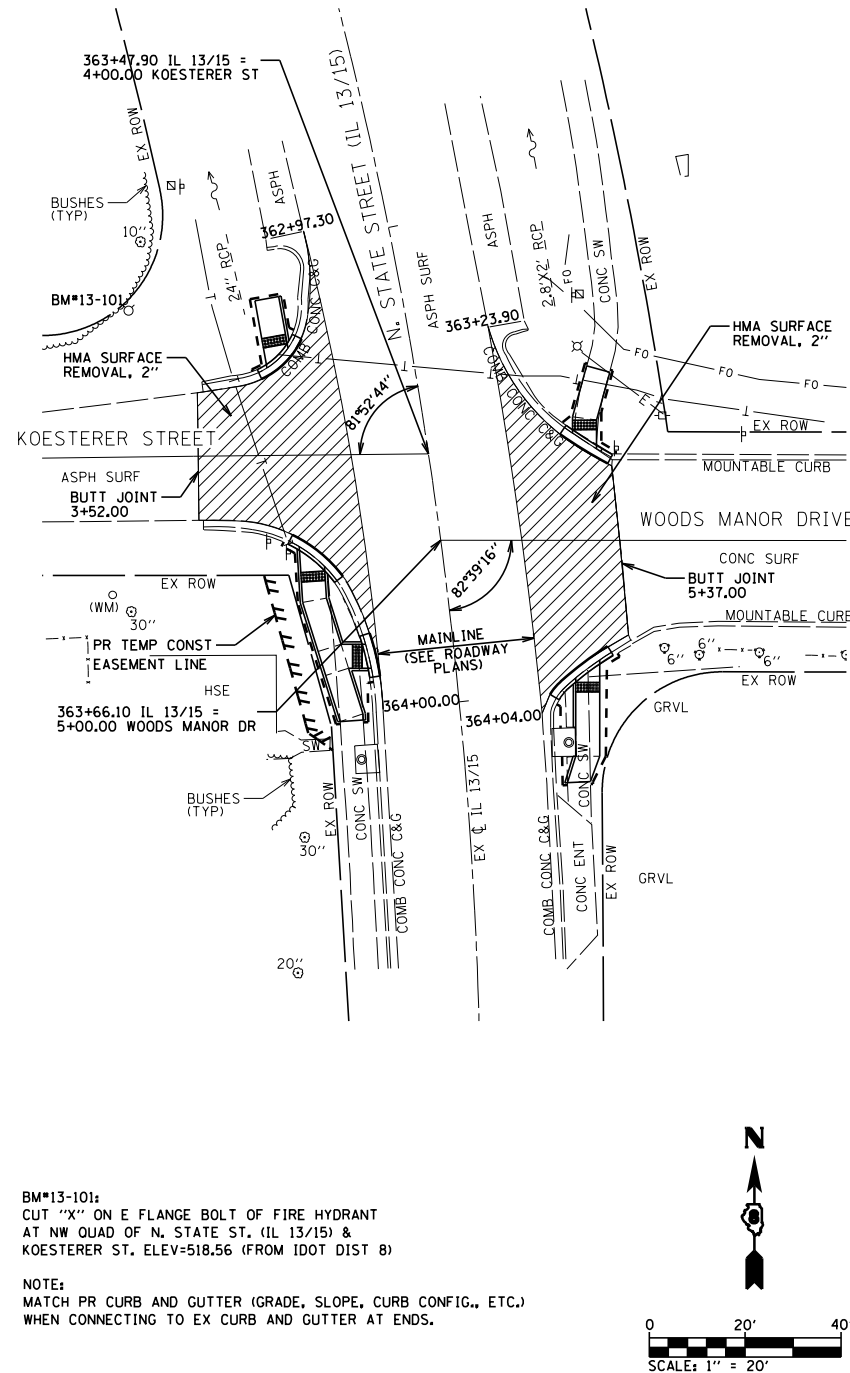
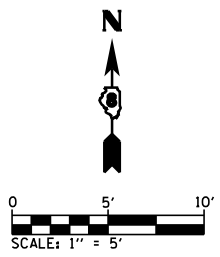


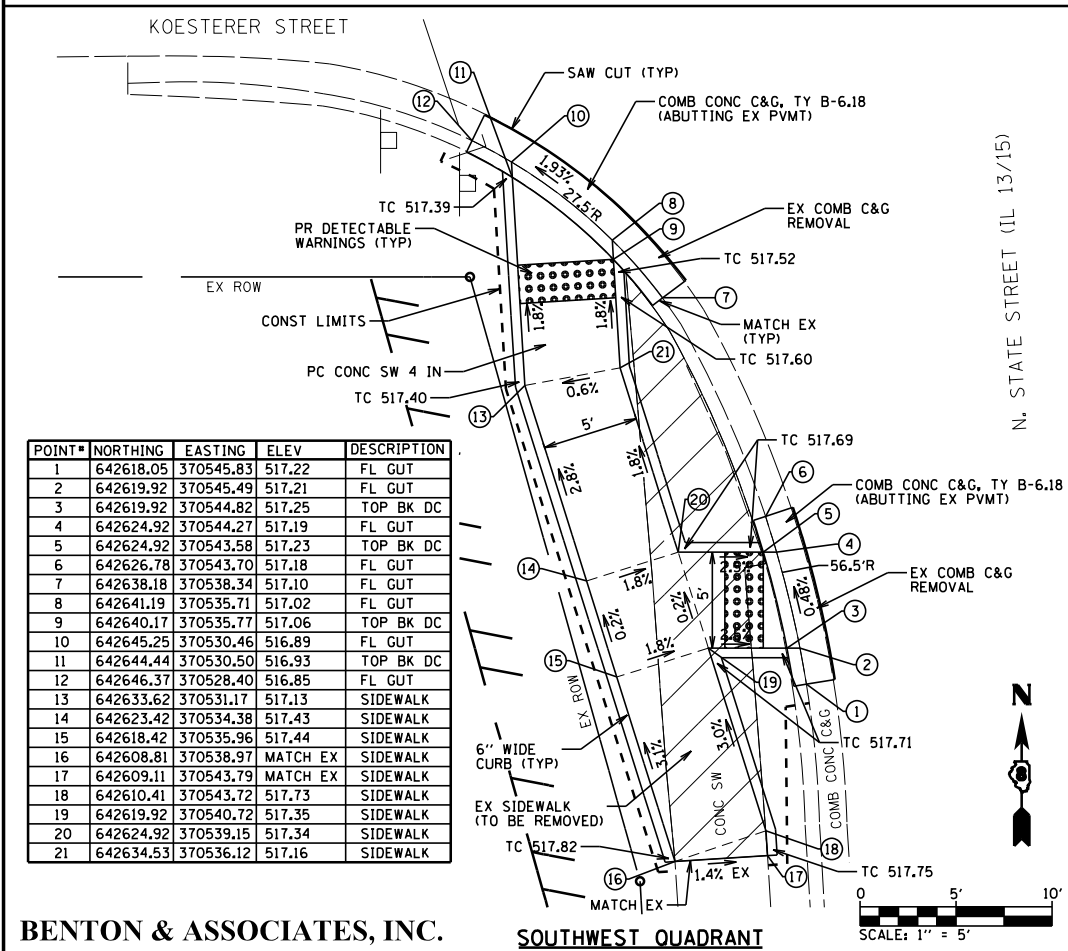
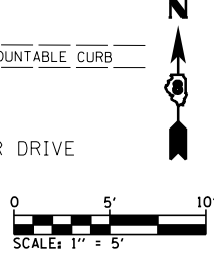
POINT#	NORTHING	EASTING	ELEV	DESCRIPTION
1	642681.55	370521.98	516.77	FL GUT
2	642682.50	370523.74	516.83	FL GUT
3	642683.21	370523.61	516.87	TOP BK DC
4	642686.59	370528.08	516.90	FL GUT
5	642687.53	370527.91	516.94	TOP BK DC
6	642689.18	370529.58	516.82	FL GUT
7	642697.37	370526.14	517.04	SIDEWALK
8	642696.48	370521.22	517.04	SIDEWALK
9	642686.64	370522.99	516.93	SIDEWALK

NORTHWEST QUADRANT



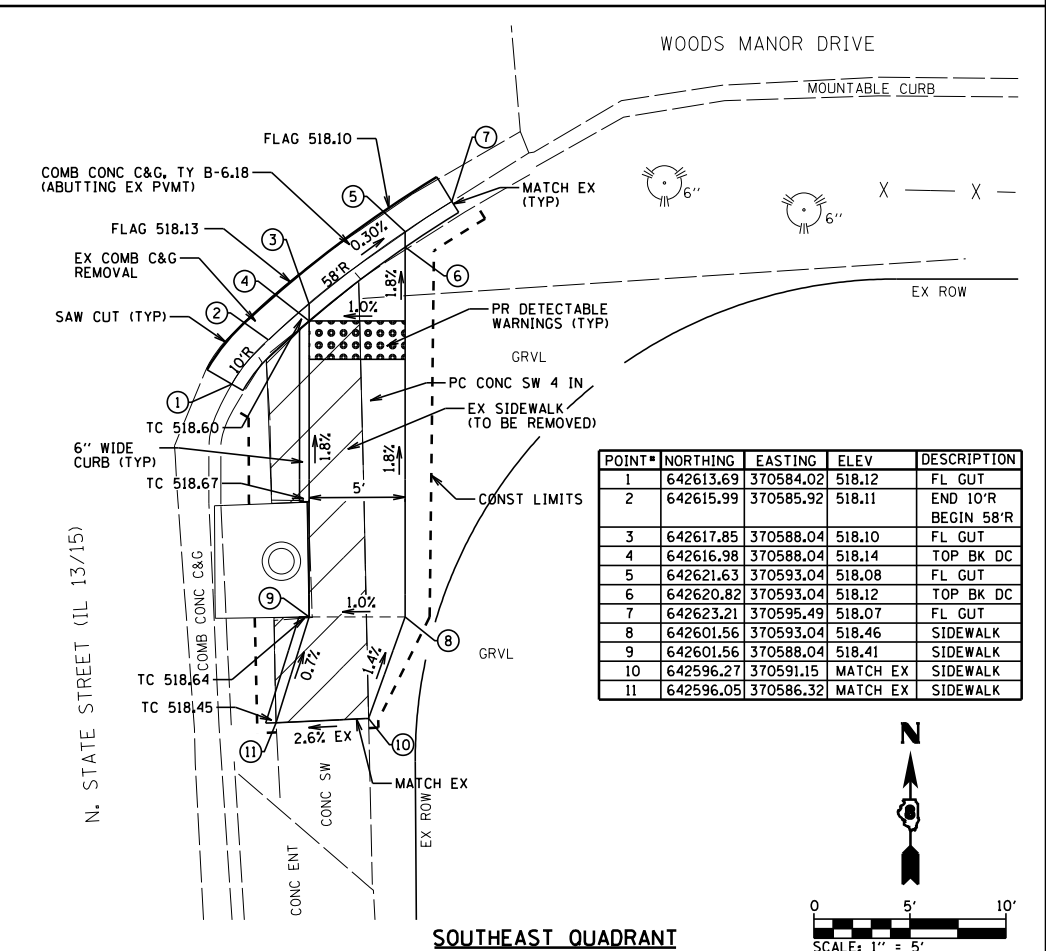
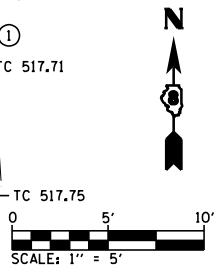
POINT#	NORTHING	EASTING	ELEV	DESCRIPTION
1	642670.06	370585.74	518.01	FL GUT
2	642668.89	370587.41	518.01	FL GUT
3	642669.60	370587.40	518.05	TOP BK DC
4	642665.66	370592.42	518.00	FL GUT
5	642666.34	370592.42	518.04	TOP BK DC
6	642665.15	370593.28	518.00	FL GUT
7	642663.91	370595.45	518.00	FL GUT
8	642669.63	370592.40	518.10	SIDEWALK
9	642671.63	370592.39	518.04	SIDEWALK
10	642681.58	370595.16	MATCH EX	SIDEWALK
11	642682.91	370590.34	MATCH EX	SIDEWALK
12	642672.30	370587.39	517.97	SIDEWALK

NORTHEAST QUADRANT



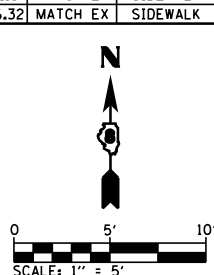
POINT#	NORTHING	EASTING	ELEV	DESCRIPTION
1	642618.05	370545.83	517.22	FL GUT
2	642619.92	370545.49	517.21	FL GUT
3	642619.92	370544.82	517.25	TOP BK DC
4	642624.92	370544.27	517.19	FL GUT
5	642624.92	370543.58	517.23	TOP BK DC
6	642626.78	370543.70	517.18	FL GUT
7	642638.18	370538.34	517.10	FL GUT
8	642641.19	370535.71	517.02	FL GUT
9	642640.17	370535.77	517.06	TOP BK DC
10	642645.25	370530.46	516.89	FL GUT
11	642644.44	370530.50	516.93	TOP BK DC
12	642646.37	370528.40	516.85	FL GUT
13	642633.62	370531.17	517.13	SIDEWALK
14	642623.42	370534.38	517.43	SIDEWALK
15	642618.42	370535.96	517.44	SIDEWALK
16	642608.81	370538.97	MATCH EX	SIDEWALK
17	642609.11	370543.79	MATCH EX	SIDEWALK
18	642610.41	370543.72	517.73	SIDEWALK
19	642619.92	370540.72	517.35	SIDEWALK
20	642624.92	370539.15	517.34	SIDEWALK
21	642634.53	370536.12	517.16	SIDEWALK

SOUTHWEST QUADRANT



POINT#	NORTHING	EASTING	ELEV	DESCRIPTION
1	642613.69	370584.02	518.12	FL GUT
2	642615.99	370585.92	518.11	END 10'R BEGIN 58'R
3	642617.85	370588.04	518.10	FL GUT
4	642616.98	370588.04	518.14	TOP BK DC
5	642621.63	370593.04	518.08	FL GUT
6	642620.82	370593.04	518.12	TOP BK DC
7	642623.21	370595.49	518.07	FL GUT
8	642601.56	370593.04	518.46	SIDEWALK
9	642601.56	370588.04	518.41	SIDEWALK
10	642596.27	370591.15	MATCH EX	SIDEWALK
11	642596.05	370586.32	MATCH EX	SIDEWALK

SOUTHEAST QUADRANT



BENTON & ASSOCIATES, INC.

BM#13-101:
CUT "X" ON E FLANGE BOLT OF FIRE HYDRANT
AT NW QUAD OF N. STATE ST. (IL 13/15) &
KOESTERER ST. ELEV=518.56 (FROM IDOT DIST B)

NOTE:
MATCH PR CURB AND GUTTER (GRADE, SLOPE, CURB CONFIG., ETC.)
WHEN CONNECTING TO EX CURB AND GUTTER AT ENDS.