



# Illinois Department of Transportation

Office of Intermodal Project Implementation / Division of Aeronautics  
1 Langhorne Bond Drive / Springfield, Illinois 62707-8415

August 30, 2019

SUBJECT: Tri-Township Airport  
Savanna, Illinois  
Carroll County  
Illinois Project Number: SFY-4650  
AIP Project Number: 3-17-SBGP-120/TBD  
Contract No. TR009  
Item No. 01A, September 20, 2019 Letting  
Addendum A

## NOTICE TO PROSPECTIVE BIDDERS

Attached is an addendum to the plans or proposal. This addendum involves revised and/or added material.

Reason for Addendum:

OEAAA Review; Modify Barricade Locations

To All Plan Holders:

This change affects one sheet in the Construction Plan drawings. There are no changes to the Special Provisions, Summary of Quantities, Schedule of Prices, or Contract calendar days.

Plan Changes:

Replace Sheet 6 of the original Construction Plans with Revised Sheet 6.

Special Provisions Changes:

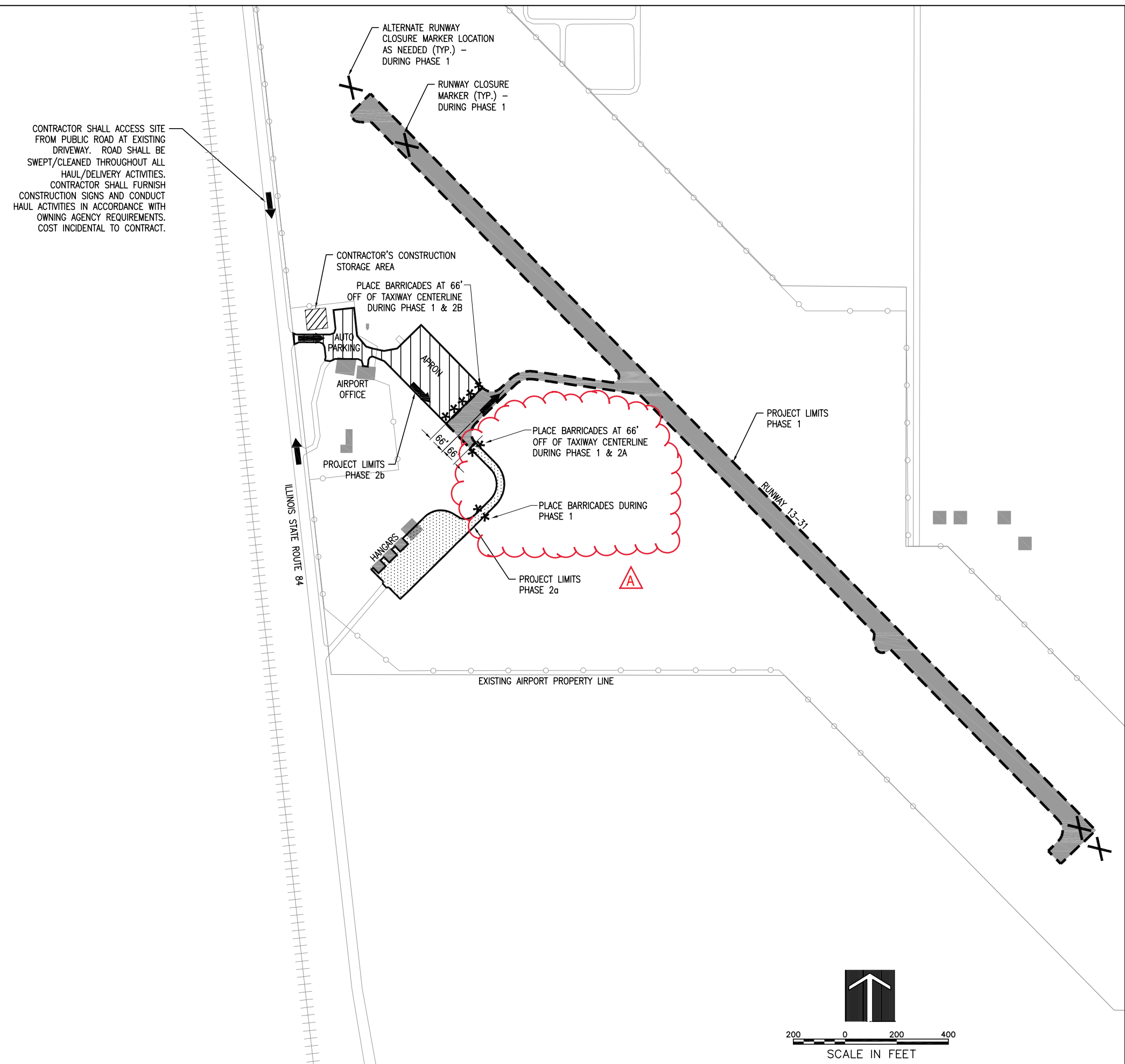
None

Schedule of Prices Changes:

None

Prime contractors must utilize the enclosed material when preparing their bid and must include any changes to the Schedule of Prices in their bid.

Questions on this addendum may be directed to Ronald M. Hudson, AICP of Hanson Professional Services Inc. at 630.368.2059.



CONTRACTOR SHALL ACCESS SITE FROM PUBLIC ROAD AT EXISTING DRIVEWAY. ROAD SHALL BE SWEEP/CLEANED THROUGHOUT ALL HAUL/DELIVERY ACTIVITIES. CONTRACTOR SHALL FURNISH CONSTRUCTION SIGNS AND CONDUCT HAUL ACTIVITIES IN ACCORDANCE WITH OWNING AGENCY REQUIREMENTS. COST INCIDENTAL TO CONTRACT.

**NOTES**

1. ALL CONTRACTOR ACTIVITIES SHALL TAKE PLACE WITHIN CONSTRUCTION LIMIT LINES AS SHOWN.
2. ALL CONSTRUCTION EQUIPMENT WILL BE LIMITED TO A HEIGHT OF 25 FEET UNLESS PRIOR APPROVAL IS GIVEN BY THE ENGINEER (SEE SPECIAL PROVISIONS).
3. CONTRACTOR'S EQUIPMENT MAY NOT DISRUPT FLIGHT OPERATIONS ON RUNWAY 13-31 AT ANY TIME DURING PHASE 2.
4. TO MINIMIZE DISTURBANCE TO TRI-TOWNSHIP AVIATION COMMUNITY CONSTRUCTION WILL BE LIMITED TO 8 HOURS PER DAY AND WILL BE COORDINATED WITH THE AIRPORT MANAGER. AT THE CONCLUSION OF EACH DAY'S WORK, THE RUNWAY WILL BE OPEN TO AIR TRAFFIC. THIS IS THE CASE EVEN IF PAVEMENT MARKINGS MAY BE PARTIALLY OBSCURED.
5. TRAFFIC TO BE MAINTAINED ON AIRPORT ROADWAYS AT ALL TIMES.
6. CONTRACTOR VEHICLES SHALL OPERATE IN ACCORDANCE WITH SPECIAL PROVISIONS SECTION 40 WHEN WITHIN THE AIRPORT OPERATIONS AREA.
7. SEE CONSTRUCTION SITE PLAN ON SHEET 3 AND SAFETY NOTES ON SHEET 5.

THE FOLLOWING ITEMS ARE TO BE COMPLETED IN PHASE 1:

1. INSTALLATION OF PROVISIONS OF TRAFFIC MAINTENANCE.
2. CRACK REPAIR WITHIN PHASE 1 LIMITS.
3. PAVEMENT MARKING WITHIN PHASE 1 LIMITS

THE FOLLOWING ITEMS ARE TO BE COMPLETED IN PHASE 2:

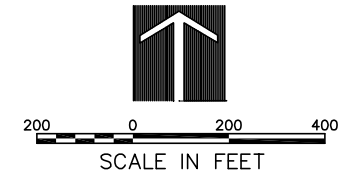
1. CRACK REPAIR WITHIN PHASE 2 LIMITS.
2. PAVEMENT MARKING WITHIN PHASE 2 LIMITS

\*\*\*\*\* STANDARD PAVEMENT BARRICADES

PHASE 1

PHASE 2a

PHASE 2b



**AIRFIELD PAVEMENT MAINTENANCE INCLUDING CRACK SEALING AND RE-MARKING**

SBGP No:  
3-17-SBGP-120/TBD  
IDA No: SFY-4650

Contract No. TR009

| NO. | DATE    | DESCRIPTION                      |
|-----|---------|----------------------------------|
| DES | DWN     | REV                              |
| A   | 8/30/19 | 0EAAA/Barricades LDH   LDH   RMH |

ISSUE: JUNE 7, 2019  
PROJECT NO: 19A0010  
CAD FILE: PHASING.DWG  
DESIGN BY: LDH 4/9/19  
DRAWN BY: LDH 4/9/19  
REVIEWED BY: RMH 07/26/19

SHEET TITLE

**PHASING PLAN**