

FOR INDEX OF SHEETS, SEE SHEET NO. 2

SUBSURFACE UTILITY ENGINEERING (S.U.E.) UTILIZED ON THIS PROJECT

FUNCTIONAL CLASSIFICATION

INTERSTATE

DESIGN DESIGNATION

2,100(35) INTERSTATE RAMP 135 (PCC-20)

TRAFFIC DATA

INTERSTATE

I-80 (RIDGE ROAD TO I-55)

2019 ADT=49,400 (EXISTING)

2040 ADT=69,600 (DESIGN)

P.V.=63.87% S.U.=4.13% M.U.=32.00%

I-80 (I-55 TO HOUBOLT RD)

2019 ADT: 65,200 (EXISTING)

2040 ADT: 93,900 (DESIGN)

P.V.=72.21% S.U.=4.53% M.U.=23.26%

DESIGN SPEED LIMIT: 70 MPH

POSTED SPEED LIMIT: 70 MPH

I-55 (I-55 NORTH OF I-80)

2017 ADT: 93,500 (EXISTING)

2040 ADT: 104,700 (DESIGN)

I-55 (I-55 SOUTH OF I-80)

2017 ADT: 71,100 (EXISTING)

2040 ADT: 82,800 (DESIGN)

DESIGN SPEED LIMIT: 70 MPH

POSTED SPEED LIMIT: 65PH

TRAFFIC DATA

I-55 RAMP A

2017 ADT: 1,630 (EXISTING)

2040 ADT: 3,900 (DESIGN)

DESIGN SPEED LIMIT: 50 MPH

POSTED SPEED LIMIT: 50 MPH

I-55 RAMP B

2017 ADT: 9,690 (EXISTING)

2040 ADT: 10,900 (DESIGN)

DESIGN SPEED LIMIT: 50 MPH

POSTED SPEED LIMIT: 50 MPH

I-55 RAMP AA

2017 ADT: 9,720 (EXISTING)

2040 ADT: 15,800 (DESIGN)

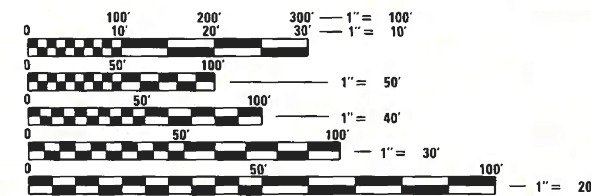
DESIGN SPEED LIMIT: 50 MPH

POSTED SPEED LIMIT: 50 MPH

E. FRONTAGE ROAD
TRAFFIC COUNT NOT AVAILABLE
DESIGN SPEED LIMIT: 45 MPH
POSTED SPEED LIMIT: 35 MPH / 25 MPH

I-55 RAMP D
2017 ADT: 8,690 (EXISTING)
2040 ADT: 8,900 (DESIGN)
DESIGN SPEED LIMIT: 50 MPH
POSTED SPEED LIMIT: 50 MPH

PROJECT IS LOCATED IN THE CITY OF JOLIET AND VILLAGE OF SHOREWOOD



FULL SIZE PLANS HAVE BEEN PREPARED USING STANDARD ENGINEERING SCALES. REDUCED SIZED PLANS WILL NOT CONFORM TO STANDARD SCALES. IN MAKING MEASUREMENTS ON REDUCED PLANS, THE ABOVE SCALES MAY BE USED.

J.U.L.I.E.
JOINT UTILITY LOCATION INFORMATION FOR EXCAVATION
1-800-892-0123
OR 811

IDOT FACILITIES ARE NOT LOCATED BY JULIE OR DIGGER. IDOT ELECTRICAL FACILITIES INCLUDING ROADWAY LIGHTING, FIBER OPTIC, ITS EQUIPMENT, TRAFFIC SIGNAL AND PUMP STATION FACILITIES ARE LOCATED BY THE DEPARTMENT'S ELECTRICAL MAINTENANCE CONTRACTOR. AS OF THE LETTING DATE, CONTACT THE MEADE ELECTRIC COMPANY AT 773-287-7672.

PROJECT ENGINEER: KEN PARK, P.E.
PROJECT MANAGER: SULEYMAN TULGAR, P.E.
CONTRACT NO. 62R26

STATE OF ILLINOIS
DEPARTMENT OF TRANSPORTATION

PROPOSED
HIGHWAY PLANS

FAI ROUTE 80 (I-80) AT I-55
SECTION FAI 80 21 STRUCTURE 5
PROJECT NHPH-HISX(002)
BRIDGE (NEW), INTERCHANGE RECONSTRUCTION,
RETAINING WALL
WILL COUNTY

C-91-113-22

SB I-55 RAMP A BEGINS
STA. 100+00.00

SB I-55 RAMP A ENDS
STA. 112+14.53

RAMP AA
PROJECT BEGINS
STA. 00+00.00

RAMP D BEGINS
STA. 6+78.95

RAMP D ENDS
STA. 16+00.00

I-55 RAMP AA RETAINING WALL
S.N. 099-W1002
STA. 13+97.42 TO
STA. 16+31.88

I-55 RAMP AA OVER I-55
S.N. 099-8330
STA. 23+19.55 TO
STA. 25+09.30

I-55 RAMP AA RETAINING WALL
S.N. 099-W1003
STA. 27+31.53 TO
STA. 1019+16.89

RAMP AA
PROJECT ENDS
STA. 31+09.63
RAMP B ENDS
STA. 1033+00.00
E. FRONTAGE RD. ENDS
STA. 37+68.82
E. FRONTAGE RD. BEGINS
STA. 4+91.00

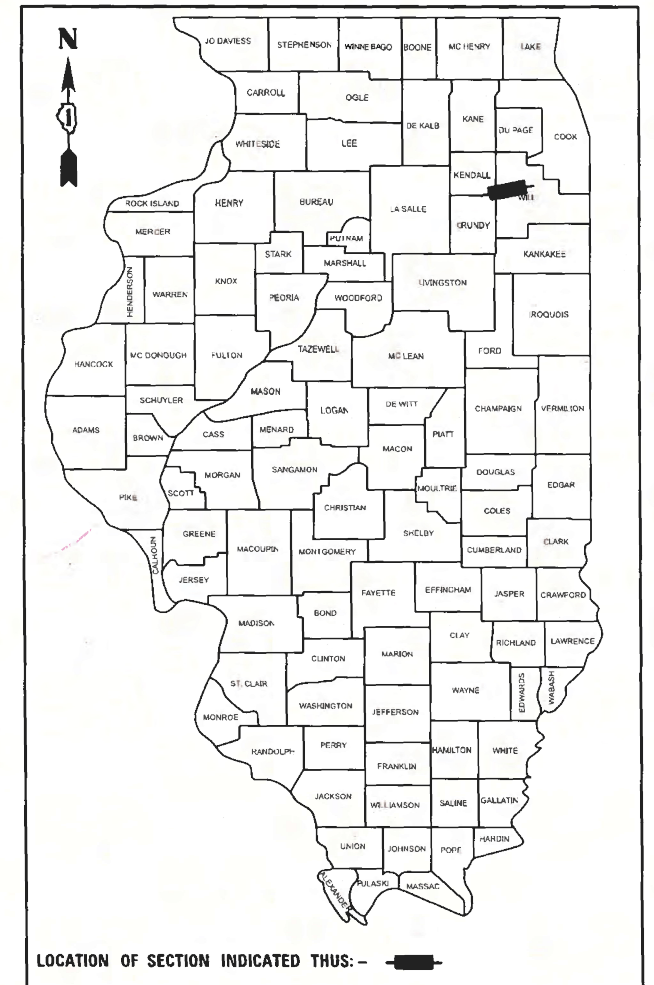
I-55 RETAINING WALL ALONG AUX LANE
S.N. 099-W1001
STA. 983+73.75 TO
STA. 1000+24.57

RAMP B BEGINS
STA. 982+94.06

STANTEC CONSULTING SERVICES INC.



DUSTIN J. BOOK, P.E.
DATE SIGNED: 06/04/2024
NO. 062-057930
EXP. DATE: 11/30/2025



LOCATION OF SECTION INDICATED THUS: - [Symbol]



STANTEC CONSULTING SERVICES INC.
350 N. ORLEANS STREET, SUITE 8000N
CHICAGO, IL 60654-1610
T: (312) 831-3000

STATE OF ILLINOIS
DEPARTMENT OF TRANSPORTATION
SUBMITTED May 29 2024
Jesse J. Jones REGIONAL ENGINEER
August 16, 2024
Scott A. Etkin
ENGINEER OF DESIGN AND ENVIRONMENT
August 16, 2024
James M. Jones
DIRECTOR OF HIGHWAYS PROJECT IMPLEMENTATION 13

PRINTED BY THE AUTHORITY
OF THE STATE OF ILLINOIS

REVISD SHEET 9/10/2024

LOCATION MAP

SCALE: 1" = 5000'

GROSS LENGTH = 3,109.63 FT. = 0.589 MILE

NET LENGTH = 2,919.24 FT. = 0.553 MILE



** 534 + 8 = 542 TOTAL SHEETS

FAI RTE.	SECTION	COUNTY	TOTAL SHEETS	SHEET NO.
I-80	FAI 80 21 STRUCTURE 5	WILL	525	1
		ILLINOIS	CONTRACT NO. 62R26	

* 525 + 9 = 534 TOTAL SHEET
P-91-185-09
D-91-206-19



MODEL: Default; FILE NAME: p:\projects\transyscorp\pw1\hobart\Documents\Projects_2018\CH401\40118002201_Sumtec\CAD\INT-C3_62R26\04-Sheet01-General\01.62R26-shh-500-001.dgn

CODE NO.	ITEM	UNIT	TOTAL QUANTITY	CONSTRUCTION CODE										
				90% FEDERAL / 10% STATE										
				ROADWAY	BRIDGE, NEW	ENVIRONMENTAL	SAFETY	LIGHTING	ITS	LANDSCAPE	RET WALL	OTHER		
0003	0008	0020	0021	0021	0021	0031	0044	0044						
URBAN	URBAN	URBAN	URBAN	URBAN	URBAN	URBAN	URBAN	URBAN						
20100110	TREE REMOVAL (6 TO 15 UNITS DIAMETER)	UNIT	507									507		
20100210	TREE REMOVAL (OVER 15 UNITS DIAMETER)	UNIT	210									210		
20100500	TREE REMOVAL, ACRES	ACRE	1.25									1.25		
20101000	TEMPORARY FENCE	FOOT	687									687		
20101200	TREE ROOT PRUNING	EACH	2									2		
20101300	TREE PRUNING (1 TO 10 INCH DIAMETER)	EACH	2									2		
20101350	TREE PRUNING (OVER 10 INCH DIAMETER)	EACH	2									2		
20200100	EARTH EXCAVATION	CU YD	52,700	52,700										
20200200	ROCK EXCAVATION	CU YD	1,000	1,000										
20201200	REMOVAL AND DISPOSAL OF UNSUITABLE MATERIAL	CU YD	2,275	2,275										
20400800	FURNISHED EXCAVATION	CU YD	65,075	65,075										
20800150	TRENCH BACKFILL	CU YD	796	796										
21001000	GEOTECHNICAL FABRIC FOR GROUND STABILIZATION	SQ YD	7,000	7,000										
21101505	TOPSOIL EXCAVATION AND PLACEMENT	CU YD	23,485									23,485		
25000115	SEEDING, CLASS 1B	ACRE	1.00									1.00		
25000210	SEEDING, CLASS 2A	ACRE	8.00									8.00		
25000310	SEEDING, CLASS 4	ACRE	10.25									10.25		
25000314	SEEDING, CLASS 4B	ACRE	0.50									0.50		
25000400	NITROGEN FERTILIZER NUTRIENT	POUND	1,800									1,800		
25000600	POTASSIUM FERTILIZER NUTRIENT	POUND	1,800									1,800		

* =SPECIALTY ITEMS

△ REVISED SHEET 9/10/2024



USER NAME = jstrouse	DESIGNED -	REVISED -
PLOT SCALE = 100.000' / in.	DRAWN -	REVISED -
PLOT DATE = 6/26/2024	CHECKED -	REVISED -
	DATE -	REVISED -

STATE OF ILLINOIS
DEPARTMENT OF TRANSPORTATION

SUMMARY OF QUANTITIES

SCALE: SHEET 1 OF 14 SHEETS STA. TO STA.

F.A.I. RTE.	SECTION	COUNTY	TOTAL SHEETS	SHEET NO.
I-80	FAI 80 21 STRUCTURE 5	WILL	525	4
CONTRACT NO. 62R26			ILLINOIS FED. AID PROJECT	

MODEL: Default; FILE NAME: P:\transys\transys\pwr\transys\pwr\hosted\Documents\Projects_2018\CH401\40118002201-Santec\CAD\INT-02_62R26\04-Sheet\01-General\01.62R26-shc-SQC-002.dgn

					CONSTRUCTION CODE							
					90% FEDERAL / 10% STATE							
CODE NO.	ITEM	UNIT	TOTAL QUANTITY	ROADWAY	BRIDGE, NEW	ENVIRONMENTAL	SAFETY	LIGHTING	ITS	LANDSCAPE	RET WALL	OTHER
				0003	0008	0020	0021	0021	0021	0031	0044	0044
				URBAN	URBAN	URBAN	URBAN	URBAN	URBAN	URBAN	URBAN	RURAL
25003210	INTERSEEDING, CLASS 2A	ACRE	3.00							3.00		
25003310	INTERSEEDING, CLASS 4	ACRE	5.00							5.00		
25100630	EROSION CONTROL BLANKET	SQ YD	81,590			81,590						
25100635	HEAVY DUTY EROSION CONTROL BLANKET	SQ YD	2,040			2,040						
28000250	TEMPORARY EROSION CONTROL SEEDING	POUND	43,830			43,830						
28000305	TEMPORARY DITCH CHECKS	FOOT	1,810			1,810						
28000400	PERIMETER EROSION BARRIER	FOOT	14,269			14,269						
28000510	INLET FILTERS	EACH	16			16						
28001000	AGGREGATE (EROSION CONTROL)	TON	235			235						
28001100	TEMPORARY EROSION CONTROL BLANKET	SQ YD	70,969			70,969						
28100107	STONE RIPRAP, CLASS A4	SQ YD	276			276						
28200200	FILTER FABRIC	SQ YD	276			276						
30300001	AGGREGATE SUBGRADE IMPROVEMENT	CU YD	2,275	2,275								
30300112	AGGREGATE SUBGRADE IMPROVEMENT 12"	SQ YD	47,586	47,586								
31101200	SUBBASE GRANULAR MATERIAL, TYPE B 4"	SQ YD	11,044	11,044								
31102100	SUBBASE GRANULAR MATERIAL, TYPE C 4"	SQ YD	9,992	9,992								
31200500	STABILIZED SUBBASE - HOT-MIX ASPHALT, 4"	SQ YD	22,103	22,103								
40200500	AGGREGATE SURFACE COURSE, TYPE A 6"	SQ YD	39	39								
40600275	BITUMINOUS MATERIALS (PRIME COAT)	POUND	44	44								
40600290	BITUMINOUS MATERIALS (TACK COAT)	POUND	8,858	8,858								

* =SPECIALTY ITEMS



USER NAME = jstrouse	DESIGNED -	REVISED -
	DRAWN -	REVISED -
PLOT SCALE = 100.000' / in.	CHECKED -	REVISED -
PLOT DATE = 6/26/2024	DATE -	REVISED -

STATE OF ILLINOIS
DEPARTMENT OF TRANSPORTATION

SUMMARY OF QUANTITIES

SCALE: SHEET 2 OF 14 SHEETS STA. TO STA.

F.A.I. RTE.	SECTION	COUNTY	TOTAL SHEETS	SHEET NO.
I-80	FAI 80 21 STRUCTURE 5	WILL	525	5
CONTRACT NO. 62R26			ILLINOIS FED. AID PROJECT	

REVIS¹ED SHEET 9/10/2024

Model: Default; File Name: P:\transportation\pwr_bentley.com\transportation\pwr_bentley.com\transportation\Documents\Projects_2018\CH40118002201-Santec\CAD\INT-02_62R26\04-sheet\01-General\01-62R26-shc-SQC-003.dgn

CONSTRUCTION CODE
90% FEDERAL / 10% STATE

CODE NO.	ITEM	UNIT	TOTAL QUANTITY	CONSTRUCTION CODE																
				ROADWAY	BRIDGE, NEW	ENVIRONMENTAL	SAFETY	LIGHTING	ITS	LANDSCAPE	RET WALL	OTHER								
				0003 URBAN	0008 URBAN	0020 URBAN	0021 URBAN	0021 URBAN	0021 URBAN	0031 URBAN	0044 URBAN	0044 RURAL								
40600370	LONGITUDINAL JOINT SEALANT	FOOT	6,554	6,554																
40701836	HOT-MIX ASPHALT PAVEMENT (FULL-DEPTH), 7 3/4"	SQ YD	8,709	8,709																
40701981	HOT-MIX ASPHALT PAVEMENT (FULL-DEPTH), 15"	SQ YD	1,572	1,572																
42000080	PAVEMENT CONNECTOR (PCC) FOR BRIDGE APPROACH SLAB	SQ YD	137	137																
42000516	PORTLAND CEMENT CONCRETE PAVEMENT 10 3/4" (JOINTED)	SQ YD	17,324	17,324																
42001300	PROTECTIVE COAT	SQ YD	32,684	32,684																
42100320	CONTINUOUSLY REINFORCED PORTLAND CEMENT CONCRETE PAVEMENT 11"	SQ YD	2,336	2,336																
42100615	PAVEMENT REINFORCEMENT	SQ YD	2,336	2,336																
44000100	PAVEMENT REMOVAL	SQ YD	23,723	23,723																
44001980	CONCRETE BARRIER REMOVAL	FOOT	222	222																
44004000	PAVED DITCH REMOVAL	FOOT	357	357																
44004250	PAVED SHOULDER REMOVAL	SQ YD	8,977	8,977																
44201851	CLASS D PATCHES, TYPE II, 17 INCH	SQ YD	352	352																
44201855	CLASS D PATCHES, TYPE III, 17 INCH	SQ YD	352	352																
44201857	CLASS D PATCHES, TYPE IV, 17 INCH	SQ YD	352	352																
48101500	AGGREGATE SHOULDERS, TYPE B 6"	SQ YD	5,467	5,467																
48203057	HOT-MIX ASPHALT SHOULDERS, 15"	SQ YD	3,915	3,915																
48300515	PORTLAND CEMENT CONCRETE SHOULDERS 10 3/4"	SQ YD	10,848	10,848																
50104400	CONCRETE HEADWALL REMOVAL	EACH	10	10																
50200100	STRUCTURE EXCAVATION	CU YD	1,644.3			481.7													1,162.6	

* =SPECIALTY ITEMS

REVISD SHEET 9/10/2024



USER NAME = jstrouse	DESIGNED -	REVISED -
PLOT SCALE = 100.000' / in.	DRAWN -	REVISED -
PLOT DATE = 6/26/2024	CHECKED -	REVISED -
	DATE -	REVISED -

STATE OF ILLINOIS
DEPARTMENT OF TRANSPORTATION

SUMMARY OF QUANTITIES

SCALE: SHEET 3 OF 14 SHEETS STA. TO STA.

F.A.I. RTE.	SECTION	COUNTY	TOTAL SHEETS	SHEET NO.
I-80	FAI 80 21 STRUCTURE 5	WILL	525	6
				CONTRACT NO. 62R26
				ILLINOIS FED. AID PROJECT

MODEL: Default
 FILE NAME: p:\projects\transys\p\w\1\stateroad\documents\projects_2018\CH401\40118002201_SummaryCAD\INT-03_62R26\04-Sheet01-General\01.62R26-sh-500-005.dgn

					CONSTRUCTION CODE							
					90% FEDERAL / 10% STATE							
CODE NO.	ITEM	UNIT	TOTAL QUANTITY	ROADWAY	BRIDGE, NEW	ENVIRONMENTAL	SAFETY	LIGHTING	ITS	LANDSCAPE	RET WALL	OTHER
				0003	0008	0020	0021	0021	0021	0031	0044	0044
				URBAN	URBAN	URBAN	URBAN	URBAN	URBAN	URBAN	URBAN	RURAL
52200250	UNTREATED TIMBER LAGGING	SQ FT	10,115								10,115	
52200500	MECHANICALLY STABILIZED EARTH RETAINING WALL	SQ FT	7,280		3,310						3,970	
52318802	DRAINAGE SYSTEM FOR STRUCTURES	L SUM	1		1							
54213660	PRECAST REINFORCED CONCRETE FLARED END SECTIONS 15"	EACH	11	11								
54213663	PRECAST REINFORCED CONCRETE FLARED END SECTIONS 18"	EACH	6	6								
54213669	PRECAST REINFORCED CONCRETE FLARED END SECTIONS 24"	EACH	20	20								
54213681	PRECAST REINFORCED CONCRETE FLARED END SECTIONS 36"	EACH	2	2								
54244405	FLUSH INLET BOX FOR MEDIAN, STANDARD 542546	EACH	1	1								
550A0070	STORM SEWERS, CLASS A, TYPE 1 15"	FOOT	48	48								
550A0120	STORM SEWERS, CLASS A, TYPE 1 24"	FOOT	302	302								
550A0360	STORM SEWERS, CLASS A, TYPE 2 15"	FOOT	194	194								
550A0380	STORM SEWERS, CLASS A, TYPE 2 18"	FOOT	263	263								
550A0410	STORM SEWERS, CLASS A, TYPE 2 24"	FOOT	741	741								
550A1280	STORM SEWERS, CLASS A, TYPE 5 24"	FOOT	317	317								
550A1620	STORM SEWERS, CLASS A, TYPE 6 36"	FOOT	205	205								
55100500	STORM SEWER REMOVAL 12"	FOOT	33	33								
55100900	STORM SEWER REMOVAL 18"	FOOT	275	275								
55101200	STORM SEWER REMOVAL 24"	FOOT	700	700								
55101400	STORM SEWER REMOVAL 30"	FOOT	142	142								
58600101	GRANULAR BACKFILL FOR STRUCTURES	CU YD	27.6		3.2						24.4	

* =SPECIALTY ITEMS

REVISED SHEET 9/10/2024



USER NAME = jstrouse	DESIGNED -	REVISED -
PLOT SCALE = 100.000' / in.	DRAWN -	REVISED -
PLOT DATE = 6/26/2024	CHECKED -	REVISED -
	DATE -	REVISED -

STATE OF ILLINOIS
DEPARTMENT OF TRANSPORTATION

SUMMARY OF QUANTITIES

SCALE: SHEET 5 OF 14 SHEETS STA. TO STA.

F.A.I. RTE.	SECTION	COUNTY	TOTAL SHEETS	SHEET NO.
I-80	FAI 80 21 STRUCTURE 5	WILL	525	8
CONTRACT NO. 62R26			ILLINOIS FED. AID PROJECT	

Model: Default
File Name: P:\ITransystems\pw_bentley.com\transyscorp\pw1_homedocuments\Projects_2018\CH401180022\01-Statens\CAD\INT-02_62R26\04-Sheet\01-General\01-62R26-shc-500-007.dgn

CONSTRUCTION CODE
90% FEDERAL / 10% STATE

CODE NO.	ITEM	UNIT	TOTAL QUANTITY	ROADWAY	BRIDGE, NEW	ENVIRONMENTAL	SAFETY	LIGHTING	ITS	LANDSCAPE	RET WALL	OTHER
				0003	0008	0020	0021	0021	0021	0031	0044	0044
				URBAN	URBAN	URBAN	URBAN	URBAN	URBAN	URBAN	URBAN	URBAN
63700180	CONCRETE BARRIER, SINGLE FACE, 44 INCH HEIGHT	FOOT	1,215				1,215					
63700280	CONCRETE BARRIER, DOUBLE FACE, 44 INCH HEIGHT	FOOT	74				74					
63700805	CONCRETE BARRIER TRANSITION	FOOT	60				60					
63700900	CONCRETE BARRIER BASE	FOOT	50				50					
64200116	SHOULDER RUMBLE STRIPS, 16 INCH	FOOT	144				144					
66400105	CHAIN LINK FENCE, 4'	FOOT	4,724	4,724								
* 66900200	NON-SPECIAL WASTE DISPOSAL	CU YD	26,183	26,183								
* 66900530	SOIL DISPOSAL ANALYSIS	EACH	12	12								
* 66901001	REGULATED SUBSTANCES PRE-CONSTRUCTION PLAN	L SUM	1	1								
* 66901003	REGULATED SUBSTANCES FINAL CONSTRUCTION REPORT	L SUM	1	1								
* 66901006	REGULATED SUBSTANCES MONITORING	CAL DA	100	100								
67100100	MOBILIZATION	L SUM	1	1								
70107025	CHANGEABLE MESSAGE SIGN	CAL DA	603				603					
70301100	TEMPORARY PAVEMENT MARKING LETTERS AND SYMBOLS - EPOXY	SQ FT	100				100					
70301120	TEMPORARY PAVEMENT MARKING - LINE 4" - EPOXY	FOOT	84,329				84,329					
70301125	TEMPORARY PAVEMENT MARKING - LINE 5" - EPOXY	FOOT	7,794				7,794					
70301140	TEMPORARY PAVEMENT MARKING - LINE 8" - EPOXY	FOOT	12,886				12,886					
70301160	TEMPORARY PAVEMENT MARKING - LINE 12" - EPOXY	FOOT	1,132				1,132					
70400100	TEMPORARY CONCRETE BARRIER	FOOT	19,262.5				19,262.5					
70400125	PINNING TEMPORARY CONCRETE BARRIER	EACH	153				153					

* =SPECIALTY ITEMS

△ REVISED SHEET 9/10/2024



USER NAME = jstrouse	DESIGNED -	REVISED -
	DRAWN -	REVISED -
PLOT SCALE = 100.000' / in.	CHECKED -	REVISED -
PLOT DATE = 6/26/2024	DATE -	REVISED -

**STATE OF ILLINOIS
DEPARTMENT OF TRANSPORTATION**

SUMMARY OF QUANTITIES

SCALE: SHEET 7 OF 14 SHEETS STA. TO STA.

F.A.I. RTE.	SECTION	COUNTY	TOTAL SHEETS	SHEET NO.
I-80	FAI 80 21 STRUCTURE 5	WILL	525	10
CONTRACT NO. 62R26			ILLINOIS FED. AID PROJECT	

MODEL: Default
 FILE NAME: pw:\transys\pw_bentley.com\transys\corp-pw\labeled\Documents\Projects_2018\CH01\401180022\01-Stattec\CAD\INT-02_62R26\04-Sheet\01-General\01.62R26-shh-SQO-008.dgn

CODE NO.	ITEM	UNIT	TOTAL QUANTITY	CONSTRUCTION CODE										
				90% FEDERAL / 10% STATE										
				ROADWAY 0003 URBAN	BRIDGE, NEW 0008 URBAN	ENVIRONMENTAL 0020 URBAN	SAFETY 0021 URBAN	LIGHTING 0021 URBAN	ITS 0021 URBAN	LANDSCAPE 0031 URBAN	RET WALL 0044 URBAN	OTHER 0044 RURAL		
70400200	RELOCATE TEMPORARY CONCRETE BARRIER	FOOT	21,525				21,525							
70600250	IMPACT ATTENUATORS, TEMPORARY (NON- REDIRECTIVE), TEST LEVEL 3	EACH	4				4							
70600260	IMPACT ATTENUATORS, TEMPORARY (FULLY REDIRECTIVE, NARROW), TEST LEVEL 3	EACH	2				2							
70600280	IMPACT ATTENUATORS, TEMPORARY (SEVERE USE, NARROW), TEST LEVEL 3	EACH	22				22							
70600332	IMPACT ATTENUATORS, RELOCATE (FULLY REDIRECTIVE, NARROW), TEST LEVEL 3	EACH	2				2							
70600350	IMPACT ATTENUATORS, RELOCATE (NON- REDIRECTIVE), TEST LEVEL 3	EACH	2				2							
70600370	IMPACT ATTENUATORS, RELOCATE (SEVERE USE, NARROW), TEST LEVEL 3	EACH	23				23							
* 72000100	SIGN PANEL - TYPE 1	SQ FT	27											27
* 72000200	SIGN PANEL - TYPE 2	SQ FT	385											385
* 72000300	SIGN PANEL - TYPE 3	SQ FT	3,847											3,847
* 72400200	REMOVE SIGN PANEL ASSEMBLY - TYPE B	EACH	6											6
* 72400310	REMOVE SIGN PANEL - TYPE 1	SQ FT	5											5
* 72400320	REMOVE SIGN PANEL - TYPE 2	SQ FT	12											12
* 72400330	REMOVE SIGN PANEL - TYPE 3	SQ FT	430											430
* 72501000	TERMINAL MARKER - DIRECT APPLIED	EACH	13				13							
* 72600100	MILE POST MARKER ASSEMBLY	EACH	1											1
* 73000100	WOOD SIGN SUPPORT	FOOT	322											322
* 73300300	OVERHEAD SIGN STRUCTURE - SPAN, TYPE III-A (5'-0" X 7'-0")	FOOT	399											399
* 73304000	OVERHEAD SIGN STRUCTURE - BRIDGE MOUNTED	FOOT	37											37
* 73400200	DRILLED SHAFT CONCRETE FOUNDATIONS	CU YD	133.8											133.8

* =SPECIALTY ITEMS

REVISED SHEET 9/10/2024



USER NAME = jstrouse	DESIGNED -	REVISED -
	DRAWN -	REVISED -
PLOT SCALE = 100.000' / in.	CHECKED -	REVISED -
PLOT DATE = 6/26/2024	DATE -	REVISED -

STATE OF ILLINOIS
DEPARTMENT OF TRANSPORTATION

SUMMARY OF QUANTITIES

SCALE: SHEET 8 OF 14 SHEETS STA. TO STA.

F.A.I. RTE.	SECTION	COUNTY	TOTAL SHEETS	SHEET NO.
I-80	FAI 80 21 STRUCTURE 5	WILL	525	11
CONTRACT NO. 62R26			ILLINOIS FED. AID PROJECT	

MODEL: Default
 FILE NAME: P:\transport\systems\pw_bentley.com\transport\pwr\homedocuments\projects_2018\CH401140118002201-Santec\CAD\INT-02_62R26\04-sheet\01-General\01.62R26-shc-500-010.dgn

CONSTRUCTION CODE

90% FEDERAL / 10% STATE

CODE NO.	ITEM	UNIT	TOTAL QUANTITY	ROADWAY	BRIDGE, NEW	ENVIRONMENTAL	SAFETY	LIGHTING	ITS	LANDSCAPE	RET WALL	OTHER
				0003	0008	0020	0021	0021	0021	0031	0044	0044
				URBAN	URBAN	URBAN	URBAN	URBAN	URBAN	URBAN	URBAN	RURAL
* 78011060	GROOVING FOR RECESSED PAVEMENT MARKING 12"	FOOT	319				319					
* 78100100	RAISED REFLECTIVE PAVEMENT MARKER	EACH	634				634					
* 78200005	GUARDRAIL REFLECTORS, TYPE A	EACH	50				50					
78300200	RAISED REFLECTIVE PAVEMENT MARKER REMOVAL	EACH	296				296					
78300202	PAVEMENT MARKING REMOVAL - WATER BLASTING	SQ FT	71,420				71,420					
* 80400100	ELECTRIC SERVICE INSTALLATION	EACH	1						1			
* 80400200	ELECTRIC UTILITY SERVICE CONNECTION	L SUM	1						1			
* 81028200	UNDERGROUND CONDUIT, GALVANIZED STEEL, 2" DIA.	FOOT	123						123			
* 81028240	UNDERGROUND CONDUIT, GALVANIZED STEEL, 4" DIA.	FOOT	360						360			
* 81028390	UNDERGROUND CONDUIT, PVC, 4" DIA.	FOOT	350					350				
* 81028750	UNDERGROUND CONDUIT, COILABLE NONMETALLIC CONDUIT, 2" DIA.	FOOT	1,798						1,798			
* 81100805	CONDUIT ATTACHED TO STRUCTURE, 3" DIA., PVC COATED GALVANIZED STEEL	FOOT	10					10				
* 81200230	CONDUIT EMBEDDED IN STRUCTURE, 2" DIA., PVC	FOOT	860					860				
* 81300530	JUNCTION BOX, STAINLESS STEEL, ATTACHED TO STRUCTURE, 12" X 10" X 6"	EACH	5					5				
* 81400200	HEAVY-DUTY HANDHOLE	EACH	6						6			
* 81603081	UNIT DUCT, 600V, 3-1C NO.2, 1/C NO.4 GROUND, (XLP-TYPE USE), 1 1/2" DIA. POLYETHYLENE	FOOT	11,835					11,835				
* 81702130	ELECTRIC CABLE IN CONDUIT, 600V (XLP-TYPE USE) 1/C NO. 6	FOOT	3,631						3,631			
* 81702140	ELECTRIC CABLE IN CONDUIT, 600V (XLP-TYPE USE) 1/C NO. 4	FOOT	930					930				
* 81702150	ELECTRIC CABLE IN CONDUIT, 600V (XLP-TYPE USE) 1/C NO. 2	FOOT	10,412					2,790	7,622			
* 81800300	AERIAL CABLE, 3-1/C NO. 2 WITH MESSENGER WIRE	FOOT	5,440					5,440				

* =SPECIALTY ITEMS



USER NAME = jstrouse	DESIGNED -	REVISED -
DRAWN -	REVISED -	
PLOT SCALE = 100.000' / in.	CHECKED -	REVISED -
PLOT DATE = 6/26/2024	DATE -	REVISED -

**STATE OF ILLINOIS
DEPARTMENT OF TRANSPORTATION**

SUMMARY OF QUANTITIES

SCALE: SHEET 10 OF 14 SHEETS STA. TO STA.

REVISED SHEET 9/10/2024				
F.A.I. RTE.	SECTION	COUNTY	TOTAL SHEETS	SHEET NO.
I-80	FAI 80 21 STRUCTURE 5	WILL	525	13
			CONTRACT NO. 62R26	
		ILLINOIS FED. AID PROJECT		

MODEL: Default
 FILE NAME: pw:\trainsystems\pw\trainsysorp\pw\l\hosted\Documents\Projects_2018\CH401\401180022001-Stantec\CAD\INT-02_62R26\04-Sheet\01-General\ID162R26-sh-SQC-012.dgn

CODE NO.	ITEM	UNIT	TOTAL QUANTITY	CONSTRUCTION CODE										
				90% FEDERAL / 10% STATE										
				ROADWAY	BRIDGE, NEW	ENVIRONMENTAL	SAFETY	LIGHTING	ITS	LANDSCAPE	RET WALL	OTHER		
0003	0008	0020	0021	0021	0021	0031	0044	0044						
URBAN	URBAN	URBAN	URBAN	URBAN	URBAN	URBAN	URBAN	RURAL						
Z0000100	ABANDON EXISTING CULVERT	EACH	1	1										
Z0013797	STABILIZED CONSTRUCTION ENTRANCE	SQ YD	8,000	8,000										
Z0013798	CONSTRUCTION LAYOUT	L SUM	1	1										
Z0018002	DRAINAGE SCUPPERS, DS-11	EACH	2		2									
X6640104	FENCE REMOVAL	FOOT	5,409	5,409										
Z0029090	DIAMOND GRINDING (BRIDGE SECTION)	SQ YD	1,012		1,012									
Z0030850	TEMPORARY INFORMATION SIGNING	SQ FT	534	534										
* Z0033020	LUMINAIRE SAFETY CABLE ASSEMBLY	EACH	38					38						
* Z0033028	MAINTENANCE OF LIGHTING SYSTEM	CAL MO	12					12						
Z0034105	MATERIAL TRANSFER DEVICE	TON	352	352										
Z0062456	TEMPORARY PAVEMENT	SQ YD	10,624	10,624										
* X8301802	REMOVE TEMPORARY WOOD POLE	EACH	3					3						
X0324097	COARSE SAND PLACEMENT, 2"	SQ YD	1,295								1,295			
X0325222	WEED CONTROL, BASAL TREATMENT	GALLON	50								50			
X0325280	EXPRESSWAY SWEEPING CYCLE	EACH	16			16								
X0326944	ATMS INTEGRATION	L SUM	1						1					
X0327120	WEED CONTROL, NATIVE LANDSCAPE ENHANCEMENT	ACRE	4.25								4.25			
* X8302151	TEMPORARY WOOD POLE, 50 FT., CLASS 4	EACH	3					3						
X0327616	MAINTAINING ITS DURING CONSTRUCTION	CAL MO	24						24					
X1400316	GAS/OIL PIPELINE PROTECTION	L SUM	1	1										

* =SPECIALTY ITEMS



USER NAME = jstrouse	DESIGNED -	REVISED -
DRAWN -	REVISED -	
PLOT SCALE = 100.000' / in.	CHECKED -	REVISED -
PLOT DATE = 6/26/2024	DATE -	REVISED -

**STATE OF ILLINOIS
DEPARTMENT OF TRANSPORTATION**

SUMMARY OF QUANTITIES

SCALE: SHEET 12 OF 14 SHEETS STA. TO STA.

△ REVISED SHEET 9/10/2024

F.A.I. RTE.	SECTION	COUNTY	TOTAL SHEETS	SHEET NO.
I-80	FAI 80 21 STRUCTURE 5	WILL	525	15
CONTRACT NO. 62R26			ILLINOIS FED. AID PROJECT	

TRAFFIC CONTROL GENERAL NOTES

1. THE MAINTENANCE OF TRAFFIC PLANS SHALL SERVE AS A GUIDE FOR THE SAFE DIVERSION OF TRAFFIC DURING EXECUTION OF THIS CONTRACT. THE CONTRACTOR MAY MODIFY THE MAINTENANCE OF TRAFFIC PLANS TO MEET CONSTRUCTION NEEDS, BUT NOT AT THE EXPENSE OF PUBLIC SAFETY OR CONVENIENCE. ANY CHANGES TO THE TRAFFIC CONTROL SHALL BE SUBMITTED TO THE ENGINEER FOR REVIEW AND APPROVAL.
2. THE REMOVAL OF EXISTING CONFLICTING PAVEMENT MARKING LINES WILL BE PAID FOR AS PAVEMENT MARKING REMOVAL - WATER BLASTING. THE REMOVAL OF TEMPORARY PAVEMENT MARKING WILL BE PAID FOR AS PAVEMENT MARKING REMOVAL - WATER BLASTING.
3. TRAFFIC CONTROL DEVICES INCLUDING, BUT NOT LIMITED TO DRUMS, VERTICAL PANELS, AND BARRICADES LOCATED IN TAPERS, GORES, AND LANE SHIFTS SHALL BE EQUIPPED WITH MONO-DIRECTIONAL STEADY BURNING LIGHTS.
4. THE CONTRACTOR SHALL REMOVE OR COVER ALL EXISTING SIGNS THAT CONFLICT WITH OR DO NOT APPLY TO THE REVISED TRAFFIC PATTERNS AND SHALL RESTORE THE SIGNS AT THE END OF CONSTRUCTION AS DIRECTED BY THE ENGINEER.
5. SIGNING FOR CONSTRUCTION ENTRANCES/EXITS SHALL BE IMPLEMENTED ACCORDING TO DISTRICT TRAFFIC CONTROL STANDARD TC-18 SIGNING AND FLAGGING OPERATIONS AT WORK ZONE OPENINGS.
6. TRAFFIC CONTROL AND PROTECTION SHALL BE PERFORMED IN ACCORDANCE WITH SECTION 701 OF THE STANDARD SPECIFICATIONS FOR ROAD AND BRIDGE CONSTRUCTION.
7. THE CONTRACTOR SHALL REMOVE ALL EXISTING RAISED REFLECTIVE PAVEMENT MARKERS WHICH CONFLICT WITH THE TRAFFIC CONTROL PLANS. THIS WORK SHALL BE PAID FOR AS "RAISED REFLECTIVE PAVEMENT MARKER, REFLECTOR REMOVAL." THE REINSTALLATION OF REFLECTORS INTO THE RAISED PAVEMENT MARKER CASTINGS UPON COMPLETION OF STAGING SHALL BE PAID FOR AS "RAISED REFLECTIVE PAVEMENT MARKER, REFLECTOR REPLACEMENT."
8. EXACT LOCATION OF ALL WARNING SIGNS AND BARRICADES SHALL BE STAKED IN THE FIELD BY THE CONTRACTOR FOR APPROVAL BY THE ENGINEER PRIOR TO INSTALLATION.
9. ALL WARNING SIGNS SHALL BE A MINIMUM OF 48" x 48" AND HAVE A BLACK LEGEND AND BORDER ON A FLORESCENT ORANGE REFLECTORIZED BACKGROUND.
10. ALL REQUIRED TRAFFIC CONTROL DEVICES SHALL BE IN PLACE PRIOR TO THE START OF CONSTRUCTION.
11. THE CONTRACTOR SHALL CONTACT THE EXPRESSWAY'S TRAFFIC CONTROL SUPERVISOR AT (847) 705-4155 AND KALPANA KANNAN-HOSADURGA, THE DISTRICT ONE TRAFFIC CONTROL SUPERVISOR, AT KALPANA.KANNAN-HOSADURGA@ILLINOIS.GOV, A MINIMUM OF 72 HOURS IN ADVANCE OF BEGINNING WORK.
12. A 24" DEFLECTION AREA IS REQUIRED FROM THE BACK SIDE OF THE TEMPORARY BARRIER WALL TO ANY OBSTRUCTION OR DROP OFF IN THE WORK ZONE. IF THIS DEFLECTION AREA CANNOT BE MAINTAINED, THE TEMPORARY CONCRETE BARRIER WALL SHALL BE ANCHORED TO THE PAVEMENT (EXCLUDING BRIDGE DECKS) IN ACCORDANCE WITH THE IDOT SAFETY ENGINEERING POLICY MEMORANDUM 4-21. THIS WORK SHALL BE PAID FOR AS PINNING TEMPORARY CONCRETE BARRIER.
13. THE CONTRACTOR SHALL REQUEST AND GAIN APPROVAL FROM THE ILLINOIS DEPARTMENT OF TRANSPORTATION'S EXPRESSWAY TRAFFIC OPERATIONS ENGINEER AT WWW.IDOTLCS.COM TWENTY-FOUR (24) HOURS IN ADVANCE OF ALL DAILY LANE, RAMP, AND SHOULDER CLOSURES AND 7 DAYS IN ADVANCE OF ALL PERMANENT AND WEEKEND CLOSURES ON ALL FREEWAYS AND/OR EXPRESSWAYS IN DISTRICT ONE. THIS ADVANCE NOTIFICATION IS CALCULATED BASED ON A WORKWEEK OF MONDAY THROUGH FRIDAY AND SHALL NOT INCLUDE WEEKENDS OR HOLIDAYS.
14. ALL TEMPORARY INFORMATION SIGNS SHALL HAVE A BLACK LEGEND AND BORDER ON A FLUORESCENT ORANGE REFLECTORIZED BACKGROUND.
15. ALL TRAFFIC CONTROL DEVICES SHALL BE REMOVED, COVERED OR TURNED AWAY FROM TRAFFIC AS SOON AS THEY ARE NO LONGER NECESSARY.
16. THE FURNISHING, INSTALLATION, AND RELOCATION OF ALL TRAFFIC SIGNS SHALL BE IN ACCORDANCE WITH THE MANUAL ON UNIFORM TRAFFIC CONTROL DEVICES AND THE STANDARD SPECIFICATIONS. THIS WORK SHALL BE INCLUDED IN THE COST OF TRAFFIC CONTROL AND PROTECTION (EXPRESSWAYS) FOR THOSE SIGNS ALONG EXPRESSWAYS. ALL CONFLICTING TRAFFIC SIGNS SHALL BE COVERED AS DIRECTED BY THE ENGINEER.
17. ALL TEMPORARY PAVEMENT MARKINGS SHOWING DETERIORATION AFTER 7 DAYS SHALL BE REPLACED BY THE CONTRACTOR AS DIRECTED BY THE ENGINEER. SUFFICIENT QUANTITIES FOR ONE PLACEMENT HAS BEEN PROVIDED FOR EACH STAGE. ALL MARKINGS THAT REQUIRE REPLACEMENT SHALL BE REPLACED BY THE CONTRACTOR AT HIS/HER OWN EXPENSE.
18. BEFORE BEGINNING ANY WORK, THE CONTRACTOR SHALL RETAIN AND RECORD FOR FUTURE REFERENCE, ALL EXISTING PAVEMENT MARKING LINES AND RAISED REFLECTIVE PAVEMENT MARKERS THAT CONFLICT WITH TEMPORARY MARKINGS, IN ORDER THAT THESE LOCATIONS CAN BE RE-ESTABLISHED FOR PROPOSED STRIPING AT THE COMPLETION OF THIS CONTRACT. THE EXACT LOCATIONS OF ALL PROPOSED PAVEMENT MARKINGS SHALL BE DIRECTED BY THE ENGINEER.
19. ALL DAMAGE TO EXISTING PAVEMENT MARKINGS OR RAISED REFLECTIVE PAVEMENT MARKERS OUTSIDE THE REMOVAL LINE SHOWN ON THE PLANS SHALL BE REPLACED AT NO ADDITIONAL COST TO THE DEPARTMENT.
20. TYPE I, TYPE II, AND TYPE III BARRICADES SHALL BE WEIGHTED IN A MANNER APPROVED BY THE MANUFACTURER SO THEY ARE NOT MOVED BY TRAFFIC.
21. THE "ROAD CONSTRUCTION AHEAD" SIGNS ON ARTERIALS SHALL REMAIN INSTALLED UNTIL THE COMPLETION OF THE PROJECT OR WHEN NO ROADWAY HAZARDS REMAIN WITHIN THE WORK ZONE.

22. THE CONTRACTOR IS DIRECTED TO THE FACT THAT OTHER SEPARATE CONTRACTS ARE, OR MAY BE, IN FORCE THAT INTERSECT THE LIMITS OF THIS PROJECT. THE CONTRACTOR SHALL COOPERATE WITH THE OTHER CONTRACTORS IN THE PHASING AND PERFORMANCE OF THIS WORK SO AS NOT TO DELAY, INTERRUPT, OR HINDER THE PROGRESS OR COMPLETION OF THE WORK BEING PERFORMED BY OTHER CONTRACTORS. THE CONTRACTOR SHALL TAKE INTO CONSIDERATION THE REQUIREMENTS OUTLINED IN THE SPECIAL PROVISION "CONTRACTOR COOPERATION" WHEN WORKING WITH OTHER CONTRACTORS AND THE DEPARTMENT. NO ADDITIONAL COMPENSATION WILL BE ALLOWED FOR COMPLIANCE WITH THE ABOVE REQUIREMENTS, NOT FOR ANY DELAYS OR INCONVENIENCES RESULTING FROM THE ACTIVITIES OF OTHER CONTRACTORS, SHOULD A CONFLICT ARISE BETWEEN THE CONTRACTORS WITH RESPECT TO SEQUENCE OF CONSTRUCTION OR MAINTENANCE OF TRAFFIC REQUIREMENTS, SAID CONFLICTS SHALL BE RESOLVED BY, OR AT THE DISCRETION OF THE ENGINEER.

IDOT CONTRACT 62R28 INCLUDES PROVISIONS FOR PLANNED RAMP CLOSURES AND DETOURS OF TRAFFIC AS PART OF THE MAINTENANCE OF TRAFFIC PLAN. COORDINATE WITH THE ENGINEER AND 62R28 CONTRACTOR FOR THE TIMING OF THE ESTABLISHED RAMP CLOSURES AND DETAILS.

ANTICIPATED RAMP CLOSURES DATES AND DURATION'S ARE LISTED BELOW FOR REFERENCE:

RAMP AA: APRIL 1, 2025 TO JUNE 30, 2026

RAMP BB: DECEMBER 1, 2025 TO MARCH 31, 2026
 RAMP CC: APRIL 1, 2025 TO NOVEMBER 30, 2025
 JULY 1, 2026 TO SEPTEMBER 30, 2026
 RAMP DD: JULY 1, 2026 TO SEPTEMBER 30, 2026



23. ACCESS ALONG MOUND ROAD AND E. FRONTAGE ROAD MUST BE MADE AVAILABLE THROUGH CONSTRUCTION TO OWNERS OF THE ADJACENT PROPERTIES, IDOT, CITY OF JOLIET, CSX RAILROAD AND THEIR DULY AUTHORIZED AGENTS. THE CONTRACTOR SHALL PROVIDE A MINIMUM 10-FOOT WIDE TRAVERSABLE ROUTE FOR THE LISTED ENTITIES THROUGH THE WORK ZONE TO THEIR RESPECTIVE PROPERTIES. THE ACCESS ROUTE SHALL BE ADJUSTED THROUGH CONSTRUCTION TO ACCOMMODATE THE ADJACENT WORK AND AS APPROVED BY THE ENGINEER. ACCESS ALONG MOUND ROAD AND E. FRONTAGE ROAD IS NOT REQUIRED TO BE PROVIDED TO THE MOTORING PUBLIC. THIS WORK SHALL NOT BE PAID FOR SEPARATELY BUT SHALL BE INCLUDED IN THE UNIT PRICES OF THE PAY ITEMS ASSOCIATED WITH THE RECONSTRUCTION OF MOUND ROAD AND E. FRONTAGE ROAD.

MODEL: Default
 FILE NAME: p:\it\transys\stems-pw\kentley.com\transys\corp\ppl\hosted\Documents\Projects_2018\C14011401180022\01-Share\CAD\INT-02_62R26\04-Sheet\03-MOT\0162R26-shr-mot-notes-001.dgn



USER NAME	▀ dbook	DESIGNED -	MRS	REVISED -	9/6/2024
		DRAWN -	MRS	REVISED -	
PLOT SCALE	▀ 100,0000' / in.	CHECKED -	BDS	REVISED -	
PLOT DATE	▀ 9/6/2024	DATE -	11/18/2022	REVISED -	

**STATE OF ILLINOIS
DEPARTMENT OF TRANSPORTATION**

**SUGGESTED TRAFFIC CONTROL PLAN
GENERAL NOTES**

SCALE: NTS SHEET 1 OF 61 SHEETS STA. TO STA.

1 REVISED SHEET 9/10/2024

F.A.I. RTE.	SECTION	COUNTY	TOTAL SHEETS	SHEET NO.
I-80	FAI 80 21 STRUCTURE 5	WILL	525	121
				CONTRACT NO. 62R26
		ILLINOIS	FED. AID PROJECT	

SUGGESTED STAGING SEQUENCE

PRE-STAGE

MAINTENANCE OF TRAFFIC

RAMP D
 MAINTAIN EXISTING TRAFFIC ON THE RAMP. IMPLEMENT SHOULDER CLOSURES ADJACENT THE WORK ZONE PER THE SUGGESTED MAINTENANCE OF TRAFFIC PLAN AND DISTRICT ONE DETAIL TC-17.

ADVISORY SPEED = 50 MPH

CONSTRUCTION TO BE COMPLETED IN STAGE

RAMP D
 WORK IN THIS STAGE CONSISTS OF REMOVING EXISTING PAVEMENT MARKINGS AND REPLACING WITH TEMPORARY PAVEMENT MARKINGS ON RAMP D AND PLACING TEMPORARY PAVEMENT FOR USE IN STAGES 2A AND 2B. COORDINATE EXACT LIMITS OF TEMPORARY PAVEMENT WITH CONTRACT 62R28. THE EXISTING RUMBLE STRIPS ALONG RAMP D ON BOTH SIDES ARE TO BE FILLED IN.

STAGE 2A

MAINTENANCE OF TRAFFIC

RAMP D
 MAINTAIN RAMP TRAFFIC AND SHIFT ALL TRAFFIC ONTO THE TEMPORARY PAVEMENT CONSTRUCTED DURING PRE-STAGE AS WELL AS PORTIONS CONSTRUCTED IN CONTRACT 62R28 ACCORDING TO THE SUGGESTED MAINTENANCE OF TRAFFIC PLAN.

ADVISORY SPEED = 50 MPH

RAMP B
 SHIFT RAMP B TRAFFIC TO THE TEMPORARY RAMP B SLIP RAMP DEFINED IN SHEETS 181A THROUGH 181H. SLIP RAMP FOLLOWS TEMPORARY AND PERMANENT PAVEMENTS CONSTRUCTED IN PREVIOUS STAGE.

ADVISORY SPEED = 40 MPH

I-55
 CONTRACTOR TO SHIFT TRAFFIC TO THE OUTSIDE SHOULDERS AND MAINTAIN TWO LANES FOR NB AND THREE LANES FOR SB TRAFFIC ACCORDING TO THE SUGGESTED MAINTENANCE OF TRAFFIC PLAN. UTILIZE HIGHWAY STANDARDS AND DISTRICT DETAIL TO CLOSE LANES, AS NEEDED, DURING THE ALLOWABLE HOURS.

I-80 OVER I-55 CENTER PIER IS IDENTIFIED FOR CONSTRUCTION IN CONTRACT 62R28. COORDINATE WITH CONTRACTOR ACCORDINGLY FOR LIMITS AND TIMING

WORK ZONE SPEED LIMIT = 55 MPH

CONSTRUCTION TO BE COMPLETED IN STAGE

RAMP D/ SB I-55 RAMP A
 WORK IN THIS STAGE CONSISTS OF RELOCATING TEMPORARY CONCRETE BARRIER (STAGE 1). CONSTRUCT THE PROPOSED OUTSIDE PORTIONS OF THE RAMP D AND OUTSIDE SHOULDERS. PROPOSED PORTIONS OF STORM SEWER AND DRAINAGE ITEMS WITHIN THE AVAILABLE WORK ZONE AND PROVIDE TEMPORARY CONNECTIONS TO THE EXISTING FACILITIES TO MAINTAIN DRAINAGE. CONSTRUCT PORTIONS OF TEMPORARY PAVEMENT FOR USE IN STAGE 2B.

I-55
 REMOVE THE I-55 MEDIAN AND CONSTRUCT THE RAMP AA OVER I-55 CENTER PIER AND INSIDE I-55 SHOULDERS. REMOVE CONFLICTING PAVEMENT MARKINGS (STAGE 1). PLACE TEMPORARY PAVEMENT MARKINGS AND RELOCATE TEMPORARY CONCRETE BARRIER.

REMOVE OVERHEAD SIGN STRUCTURE FOUNDATIONS AT THE MEDIAN AND OUTSIDE SHOULDER AT TWO LOCATIONS. INSTALL TEMPORARY SIGNS INFORMATION SIGNS AT THE DESIGNATED LOCATIONS. MAINTAIN THE TEMPORARY SIGNS UNTIL THE PROPOSED SIGN STRUCTURE AND SIGNS ARE CONSTRUCTED.

RAMP AA
 OFFLINE CONSTRUCTION OF RAMP AA TO CONTINUE WEST OF I-55. CONTRACTOR COORDINATION FOR THE I-80 OVER RAMP AA BRIDGE WORK. COMPLETE RAMP AA EAST OF I-55 AND CONNECT TO RAMP B.

STAGE 2B

MAINTENANCE OF TRAFFIC

RAMP D/ SB I-55 RAMP A
 MAINTAIN TRAFFIC ON THE RAMP AND SHIFT ALL TRAFFIC ONTO THE PROPOSED PAVEMENT CONSTRUCTED IN STAGE 2A AND TEMPORARY PAVEMENT CONSTRUCTED IN STAGE 2A ACCORDING TO THE SUGGESTED MAINTENANCE OF TRAFFIC PLAN.

ADVISORY SPEED = 50 MPH

CONSTRUCTION TO BE COMPLETED IN STAGE

RAMP D/ SB I-55 RAMP A
 REMOVE AND REPLACE TEMPORARY PAVEMENT MARKINGS ON RAMP D AND SB I-55 RAMP. REMOVE AND RELOCATE TEMPORARY CONCRETE BARRIER (STAGE 2A). CONSTRUCT THE PROPOSED INSIDE PORTIONS OF THE RAMP D AND SB I-55 RAMP AND INSIDE SHOULDERS. COMPLETE PROPOSED PORTIONS OF STORM SEWER AND DRAINAGE ITEMS WITHIN THE AVAILABLE WORK ZONE.

RAMP AA
 CONSTRUCT REMAINING PORTIONS OF RAMP AA AND SHOULDERS. CONSTRUCT THE REMAINING RAMP AA FLYOVER BRIDGE. THE BRIDGE MUST BE COMPLETED BY OCTOBER 30, 2026.

STAGE 1

MAINTENANCE OF TRAFFIC

I-55
 SHIFT AND NARROW LANES NORTHBOUND AND SOUTHBOUND TRAFFIC ACCORDING TO THE SUGGESTED MAINTENANCE OF TRAFFIC PLAN. CONTRACTOR TO UTILIZE D1 DETAIL TC-09 AND TC-17 AND HIGHWAY STANDARDS 701400, 701401, 701428, AND 701446 DURING THE ALLOWABLE HOURS AS SHOWN ON STAGING PLANS.

WORK ZONE SPEED LIMIT = 55 MPH

CONSTRUCTION TO BE COMPLETED IN STAGE

RAMP AA/RAMP B
 OFFLINE CONSTRUCTION OF EMBANKMENT TO BEGIN.

E. FRONTAGE ROAD
 REMOVE AND RECONSTRUCT TRAVEL LANES AND SHOULDERS THROUGH PROJECT LIMITS.

I-55
 WORK IN THIS STAGE CONSISTS OF REMOVING CONFLICTING EXISTING PAVEMENT MARKINGS, PLACING TEMPORARY PAVEMENT MARKINGS AND TEMPORARY CONCRETE BARRIER. CONSTRUCT THE NORTHBOUND AND SOUTHBOUND AUXILIARY LANES AND SHOULDERS ACCORDING TO THE MAINTENANCE OF TRAFFIC PLAN.

CONSTRUCTION OF OUTSIDE ABUTMENTS FOR RAMP AA FLYOVER BRIDGE TO BEGIN. CONSTRUCTION OF ABUTMENTS MUST BE COMPLETED BY JULY 1, 2026.

CONSTRUCT RETAINING WALL 099-W1001.

CONSTRUCT OVERHEAD SIGN STRUCTURE FOUNDATIONS AT THE MEDIAN AND OUTSIDE SHOULDER AT ONE LOCATIONS. INSTALL SIGN TRUSS SPAN TRUSS AND SIGN PANELS USING A FULL CLOSURE. REMOVE EXISTING SIGN STRUCTURES AND SIGNS ONCE PROPOSED SIGNS ARE COMPLETE.

MODEL: Default
 FILE NAME: p:\projects\transystems-pw-bentley.com\transystems\scorp-pw1-bentley\Documents\Projects_2018\C401\401180022\01-5stntec\CAD\INT-02_62R26\04-sheet\03-MOT\0162R26-shr-mot-sequence-002.dgn



USER NAME	= dbook	DESIGNED	- MRS	REVISED	- 9/6/2024
DRAWN	- MRS	REVISIONS	-		
PLOT SCALE	= 100,0000' / in.	CHECKED	- BDS	REVISED	-
PLOT DATE	= 9/6/2024	DATE	- 11/18/2022	REVISED	-

STATE OF ILLINOIS
 DEPARTMENT OF TRANSPORTATION

SUGGESTED TRAFFIC CONTROL PLAN STAGING SEQUENCE

SCALE: NTS SHEET 2 OF 16 SHEETS STA. TO STA.

REVISED SHEET 9/10/2024

F.A.I. RTE.	SECTION	COUNTY	TOTAL SHEETS	SHEET NO.
I-80	FAI 80 21 STRUCTURE 5	WILL	525	122
CONTRACT NO. 62R26				
ILLINOIS		FED. AID PROJECT		

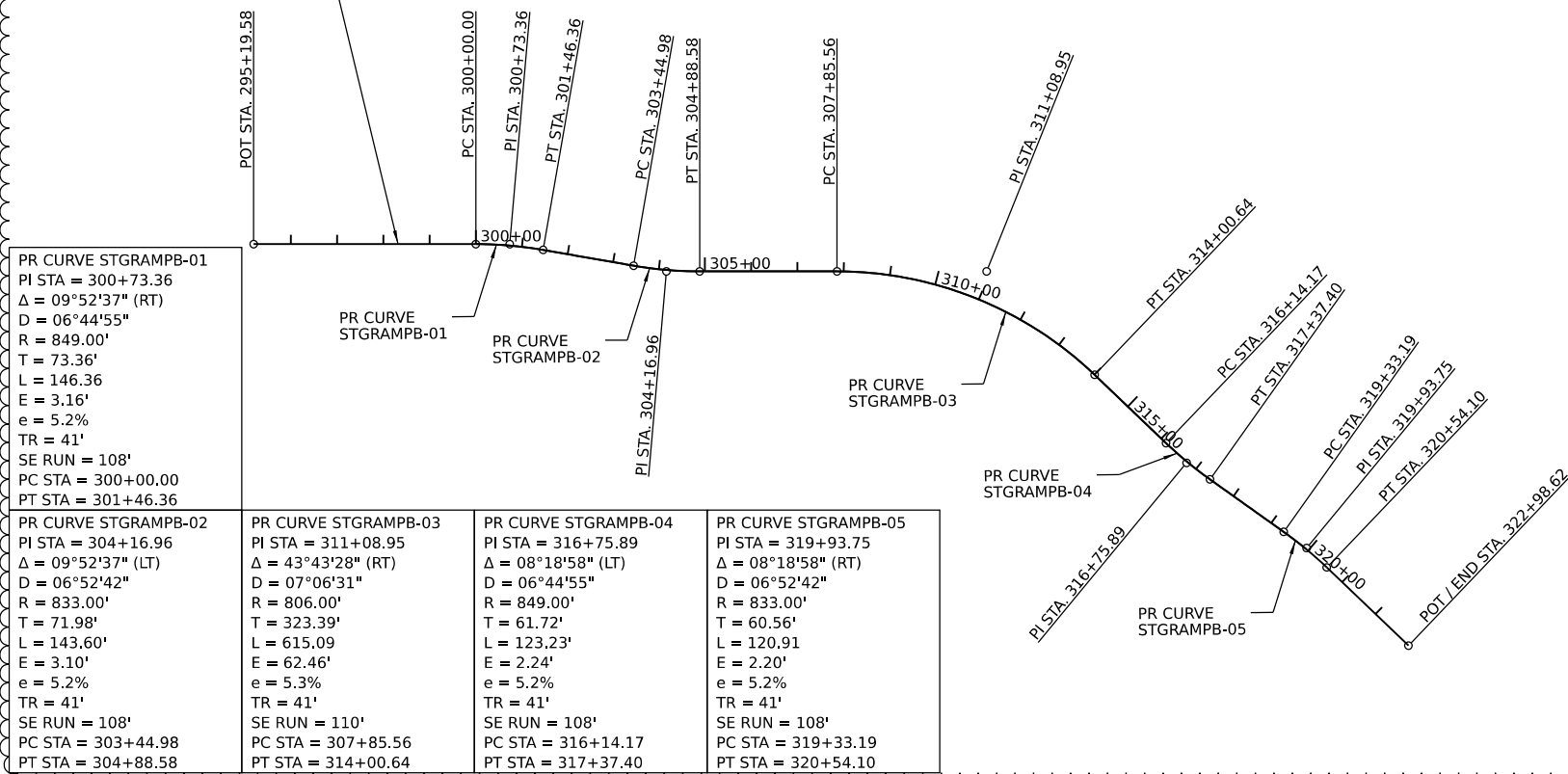
TRAFFIC CONTROL GENERAL NOTES

1. THE MAINTENANCE OF TRAFFIC PLANS SHALL SERVE AS A GUIDE FOR THE SAFE DIVERSION OF TRAFFIC DURING EXECUTION OF THIS CONTRACT. THE CONTRACTOR MAY MODIFY THE MAINTENANCE OF TRAFFIC PLANS TO MEET CONSTRUCTION NEEDS, BUT NOT AT THE EXPENSE OF PUBLIC SAFETY OR CONVENIENCE. ANY CHANGES TO THE TRAFFIC CONTROL SHALL BE SUBMITTED TO THE ENGINEER FOR REVIEW AND APPROVAL.
2. THE CONSTRUCTION OF RAMP B OVERLAPS CONTRACT 62R26 AND 62R28 AND INCLUDES MAINTENANCE OF TRAFFIC IN BOTH CONTRACTS. THE CONTRACTOR SHALL COORDINATE ALL RAMP B STAGE CHANGES WITH THE ENGINEER AND CONTRACT 62R28 PRIOR TO IMPLEMENTING THE WORK.

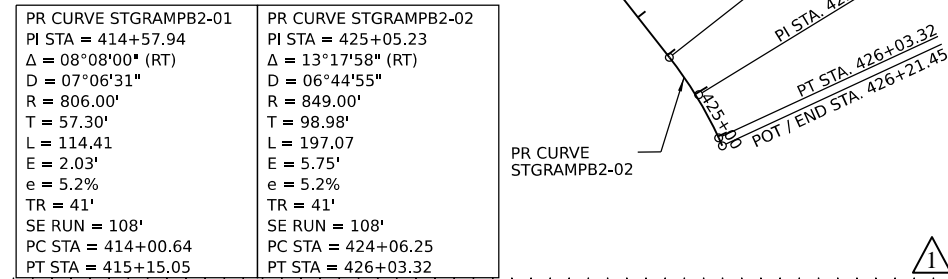
BILL OF MATERIALS

ITEM	DESCRIPTION	UNIT	QUANTITY
20200100	EARTH EXCAVATION	CU YD	1705
20400800	FURNISHED EXCAVATION	CU YD	2025
20800150	TRENCH BACKFILL	CU YD	64
31101200	SUBBASE GRANULAR MATERIAL, TYPE B 4"	SQ YD	7055
44000100	PAVEMENT REMOVAL	SQ YD	6635
54213663	PRECAST REINFORCED CONCRETE FLARED END SECTIONS 18"	EACH	2
54213669	PRECAST REINFORCED CONCRETE FLARED END SECTIONS 24"	EACH	4
550A0380	STORM SEWERS, CLASS A, TYPE 2 18"	FOOT	135
550A0410	STORM SEWERS, CLASS A, TYPE 2 24"	FOOT	371
55100900	STORM SEWER REMOVAL 18"	FOOT	135
55101200	STORM SEWER REMOVAL 24"	FOOT	371
70301120	TEMPORARY PAVEMENT MARKING - LINE 4" - EPOXY	FOOT	14100
70301140	TEMPORARY PAVEMENT MARKING - LINE 8" - EPOXY	FOOT	1759
70301160	TEMPORARY PAVEMENT MARKING - LINE 12" - EPOXY	FOOT	57
70400100	TEMPORARY CONCRETE BARRIER	FOOT	7962.5
70400200	RELOCATE TEMPORARY CONCRETE BARRIER	FOOT	2850.0
70600250	IMPACT ATTENUATORS, TEMPORARY (NON- REDIRECTIVE), TEST LEVEL 3	EACH	2
70600280	IMPACT ATTENUATORS, TEMPORARY (SEVERE USE, NARROW), TEST LEVEL 3	EACH	1
78300202	PAVEMENT MARKING REMOVAL - WATER BLASTING	SQ FT	5929
Z0062456	TEMPORARY PAVEMENT	SQ YD	6635

PR RAMP B SLIP RAMP



PR RAMP B SLIP RAMP 02



POINT	STATION	NORTHING	EASTING	CURVE
POB	295+19.58	1752706.45	1021594.57	
PC	300+00.00	1753186.75	1021605.02	STGRAMPB-01
PI	300+73.36	1753260.09	1021606.62	STGRAMPB-01
PT	301+46.36	1753332.08	1021620.77	STGRAMPB-01
PC	303+44.98	1753526.97	1021659.09	STGRAMPB-02
PI	304+16.96	1753597.6	1021672.97	STGRAMPB-02
PT	304+88.58	1753669.56	1021674.54	STGRAMPB-02
PC	307+85.56	1753966.46	1021680.99	STGRAMPB-03
PI	311+08.95	1754289.78	1021688.03	STGRAMPB-03
PT	314+00.65	1754518.57	1021916.58	STGRAMPB-03
PC	316+14.17	1754669.63	1022067.49	STGRAMPB-04
PI	316+75.89	1754713.3	1022111.11	STGRAMPB-04
PT	317+37.40	1754762.82	1022147.96	STGRAMPB-04
PC	319+33.19	1754919.89	1022264.84	STGRAMPB-05
PI	319+93.75	1754968.48	1022301	STGRAMPB-05
PT	320+54.10	1755011.32	1022343.79	STGRAMPB-05
POT / END	322+98.62	1755184.32	1022516.61	

POINT	STATION	NORTHING	EASTING	CURVE
POB / PC	414+00.64	1754518.57	1021916.58	STGRAMPB2-01
PI	414+57.94	1754559.11	1021957.08	STGRAMPB2-01
PT	415+15.06	1754593.51	1022002.91	STGRAMPB2-01
PC	424+06.25	1755128.56	1022715.61	STGRAMPB2-02
PI	425+05.23	1755187.98	1022794.77	STGRAMPB2-02
PT	426+03.32	1755227.6	1022885.47	STGRAMPB2-02
POT / END	426+21.45	1755234.86	1022902.09	



ADDED ENTIRE SHEET 9/10/2024



USER NAME	DESIGNED	REVISED
drawn	-	9/6/2024
PLOT SCALE	CHECKED	REVISED
1" = 400.000' / in.	-	-
PLOT DATE	DATE	REVISED
9/6/2024	-	-

STATE OF ILLINOIS
DEPARTMENT OF TRANSPORTATION

SUGGESTED CONSTRUCTION STAGING-RAMP B SLIP RAMP
GENERAL NOTES, BILL OF MATERIALS AND ALIGNMENT

F.A.I. RTE.	SECTION	COUNTY	TOTAL SHEETS	SHEET NO.
I-80	FAI 80 21 STRUCTURE 5	WILL	525	181A
CONTRACT NO. 62R26			ILLINOIS FED. AID PROJECT	

MODEL: Default
 FILE NAME: p:\projects\transportation\p01_bentley\documents\projects_2018\c40118002701-Shance\CAD\INT_02_62R26\05-Addendum\0162R26_sht-general-notes-ramp.dgn

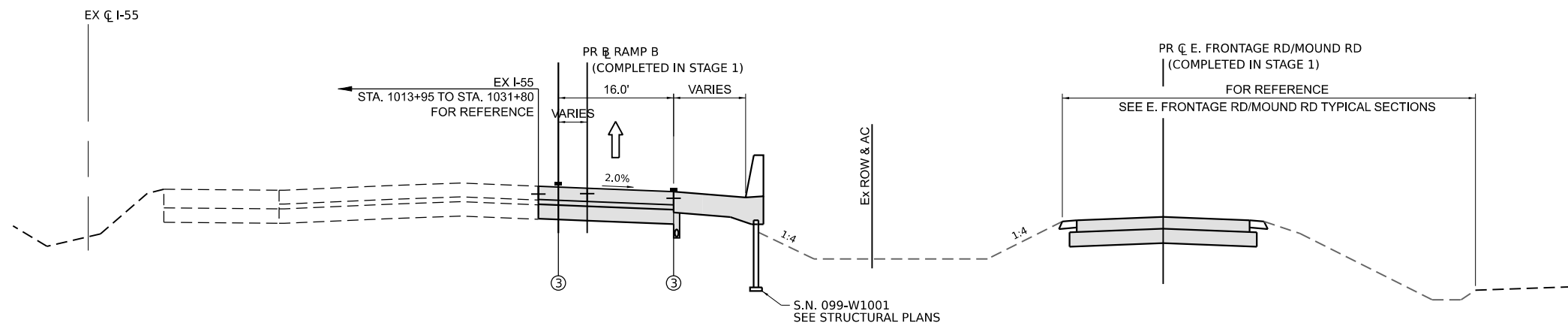
LEGEND

- TEMPORARY PAVEMENT
- COMPLETED PERMANENT PAVEMENT
- DIRECTION OF TRAFFIC FLOW
- TEMPORARY CONCRETE BARRIER
- ① TEMPORARY PAVEMENT MARKING - LINE 4" - EPOXY (SOLID YELLOW)
- ② TEMPORARY PAVEMENT MARKING - LINE 4" - EPOXY (SOLID WHITE)
- ③ TEMPORARY PAVEMENT MARKING - LINE 8" - EPOXY (SOLID WHITE)

NOTES:

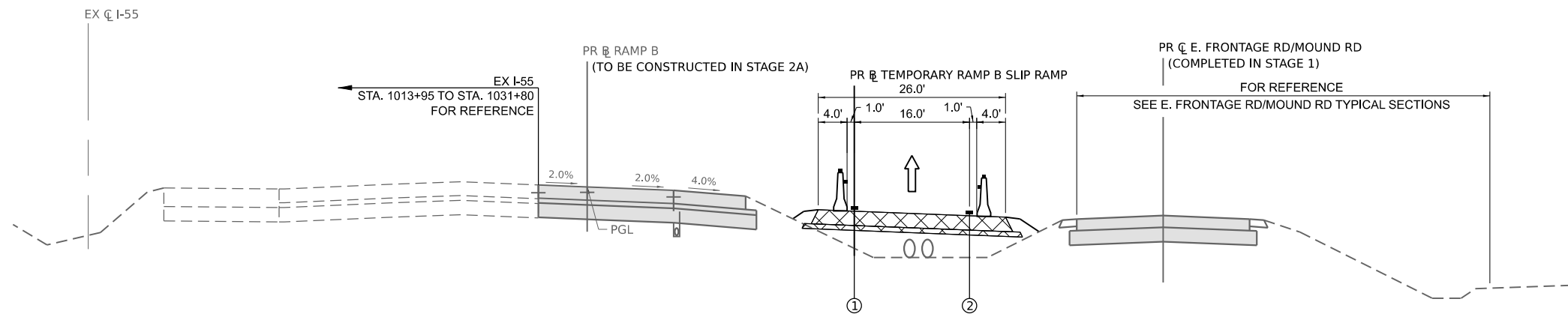
TYPE C BARRIER WALL REFLECTORS SHALL BE PLACED EVERY 25' ALONG TEMPORARY CONCRETE BARRIER, IN ACCORDANCE WITH THE SPECIAL PROVISION FOR TRAFFIC CONTROL AND PROTECTION (EXPRESSWAYS) THE TYPE C REFLECTORS APPLIED TO TEMPORARY BARRIER SHOULD NOT BE PAID FOR SEPARATELY. THE COST OF THE REFLECTORS ARE INCLUDED IN THE UNIT PRICE OF TEMPORARY CONCRETE BARRIER AND TEMPORARY CONCRETE BARRIER (RELOCATE) PAY ITEMS.

REFLECTORS SHALL BE MOUNTED ON TOP OF BARRIER AND THE FACE ADJACENT TO TRAFFIC, ACCORDING TO STANDARD 704001-08. WHERE TEMPORARY CONCRETE BARRIER IS SEPARATING OPPOSING TRAFFIC, REFLECTORS SHALL BE USED ON BOTH SIDES.



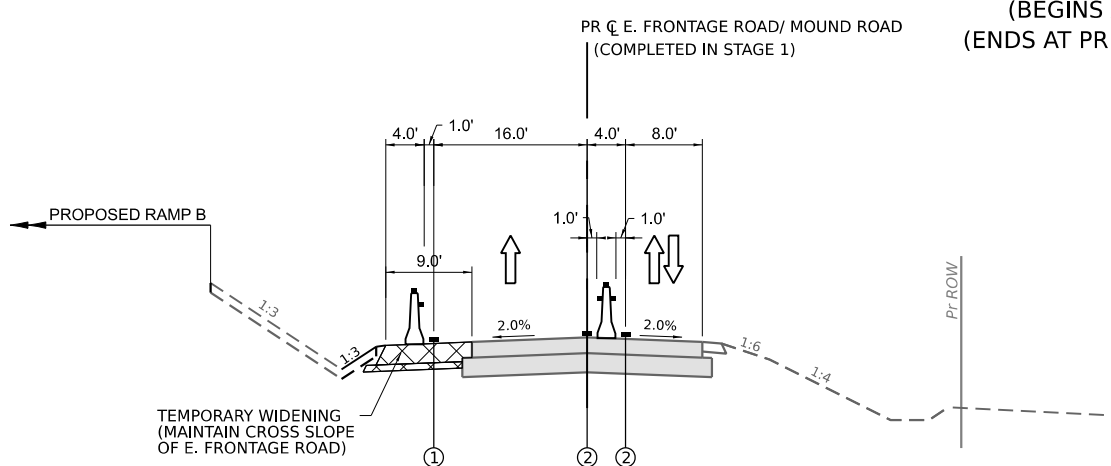
PROPOSED NB I-55 AUXILIARY LANE (RAMP B)

LOOKING NORTH
PR RAMP B STA. 995+54.5 TO STA. 1001+00.0



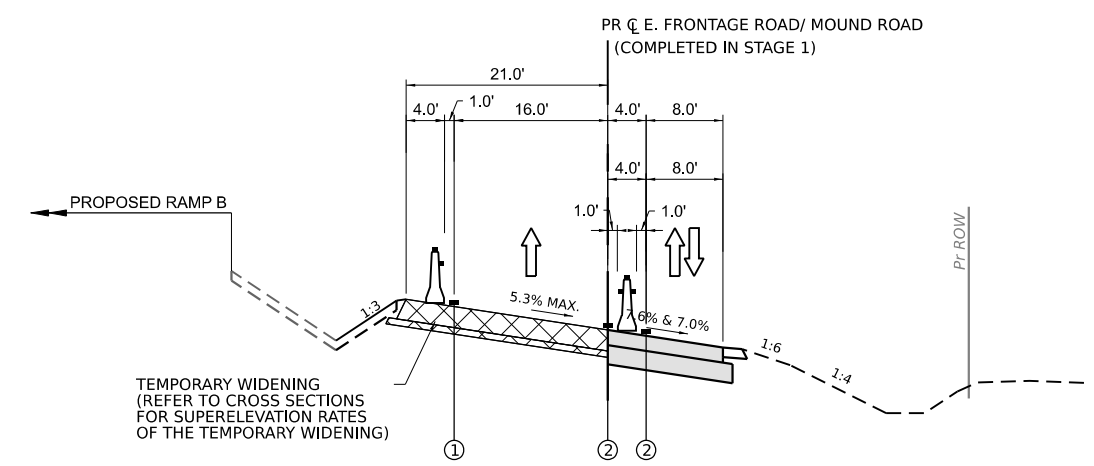
PROPOSED RAMP B SLIP RAMP

LOOKING NORTH
PR RAMP B SLIP RAMP: STA. 300+38.5 TO STA. 302+96.7
(BEGINS AT PR RAMP B STA. 1001+00.0)
(ENDS AT PR E. FRONTAGE ROAD STA. 12+99.8)



PROPOSED E. FRONTAGE ROAD/ RAMP B SLIP RAMP

LOOKING NORTH
PR E. FRONTAGE ROAD/ MOUND ROAD
STA. 12+99.8 TO STA. 17+97.9
STA. 25+00.2 TO 29+91.5



PROPOSED E. FRONTAGE ROAD/ RAMP B SLIP RAMP

LOOKING NORTH
PR E. FRONTAGE ROAD/ MOUND ROAD
STA. 17+97.9 TO STA. 25+00.2
(FULL SUPERELEVATION)

ADDED ENTIRE SHEET 9/10/2024

MODEL: Default; FILE NAME: p:\projects\systems-pw\kentley.com\transys\scorp\p1\hatched\Documents\Projects_2018\C401401180022\01-States\CAD\INT-02_62R26\05-Addendum\0162R26-shc1.rvt



USER NAME	dbook	DESIGNED	-	REVISED	-	9/6/2024
DRAWN	-	REVISION	-	REVISION	-	
PLOT SCALE	= 100,000 * / in.	CHECKED	-	REVISION	-	
PLOT DATE	= 9/6/2024	DATE	-	REVISION	-	


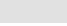


STATE OF ILLINOIS
DEPARTMENT OF TRANSPORTATION

SUGGESTED CONSTRUCTION STAGING
TYPICAL SECTIONS - TEMPORARY RAMP B SLIP RAMP

F.A.I. RTE.	SECTION	COUNTY	TOTAL SHEETS	SHEET NO.
I-80	FAI 80 21 STRUCTURE 5	WILL	525	181B
CONTRACT NO. 62R26				
ILLINOIS FED. AID PROJECT				

SCALE: SHEET OF SHEETS STA. TO STA.

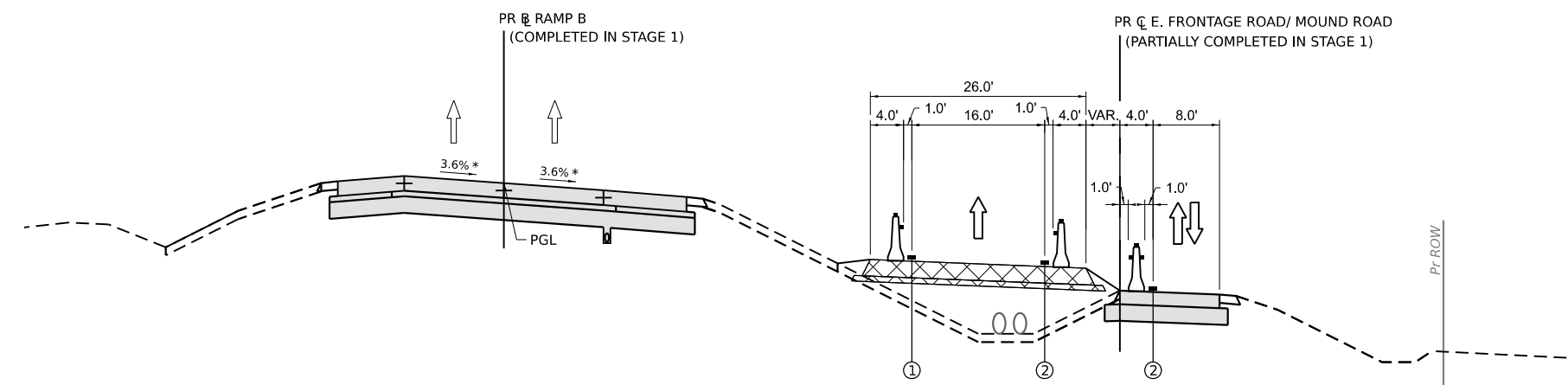
LEGEND

-  TEMPORARY PAVEMENT
-  COMPLETED PERMANENT PAVEMENT
-  DIRECTION OF TRAFFIC FLOW
-  TEMPORARY CONCRETE BARRIER
- ① TEMPORARY PAVEMENT MARKING - LINE 4" - EPOXY (SOLID YELLOW)
- ② TEMPORARY PAVEMENT MARKING - LINE 4" - EPOXY (SOLID WHITE)
- ③ TEMPORARY PAVEMENT MARKING - LINE 8" - EPOXY (SOLID WHITE)

NOTES:

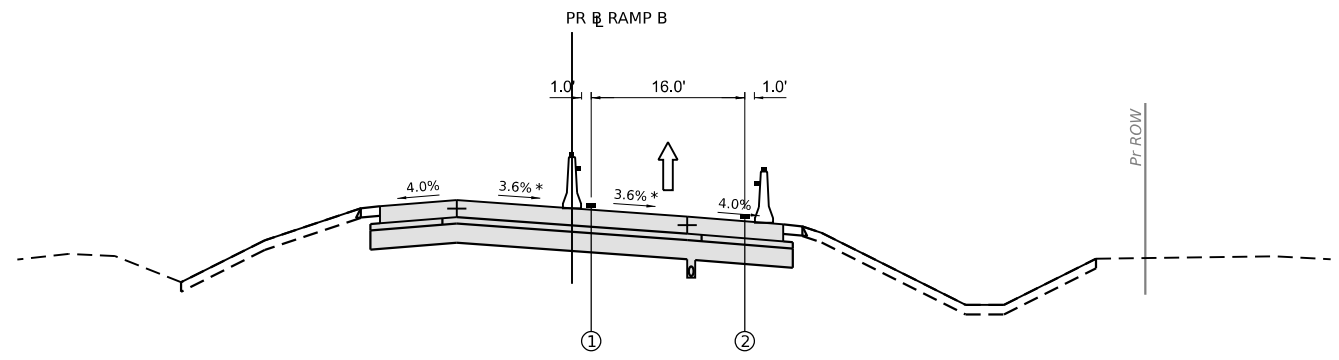
TYPE C BARRIER WALL REFLECTORS SHALL BE PLACED EVERY 25' ALONG TEMPORARY CONCRETE BARRIER, IN ACCORDANCE WITH THE SPECIAL PROVISION FOR TRAFFIC CONTROL AND PROTECTION (EXPRESSWAYS) THE TYPE C REFLECTORS APPLIED TO TEMPORARY BARRIER SHOULD NOT BE PAID FOR SEPARATELY. THE COST OF THE REFLECTORS ARE INCLUDED IN THE UNIT PRICE OF TEMPORARY CONCRETE BARRIER AND TEMPORARY CONCRETE BARRIER (RELOCATE) PAY ITEMS.

REFLECTORS SHALL BE MOUNTED ON TOP OF BARRIER AND THE FACE ADJACENT TO TRAFFIC, ACCORDING TO STANDARD 704001-08. WHERE TEMPORARY CONCRETE BARRIER IS SEPARATING OPPOSING TRAFFIC, REFLECTORS SHALL BE USED ON BOTH SIDES.




PROPOSED E. FRONTAGE ROAD/ RAMP B SLIP RAMP

LOOKING NORTH
 PR \bar{B} RAMP B SLIP RAMP: STA. 320+00.0 TO STA. 325+05.2
 (BEGINS AT PR \bar{C} E. FRONTAGE ROAD STA. 29+91.5)
 (ENDS AT PR \bar{B} RAMP B STA. 1026+26.4)



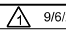
PROPOSED RAMP B

LOOKING NORTH
 PR \bar{B} RAMP B STA. 1026+26.4 TO STA. 1033+00.0

 ADDED ENTIRE SHEET 9/10/2024

MODEL: D:\default...
 FILE NAME: p:\projects\systems-pw-bentley.com\transys\corp\pw1\hosted\Documents\Projects_2018\C401\401180022\01-5hmtcc\CAD\INT-02_62R26\05-Addendum\0162R26-shc.tpp



USER NAME	▀ dbook	DESIGNED	-	REVISED	-	 9/6/2024
DRAWN	-	DRAWN	-	REVISED	-	
PLOT SCALE	▀ 100,000 * / in.	CHECKED	-	REVISED	-	
PLOT DATE	▀ 9/6/2024	DATE	-	REVISED	-	

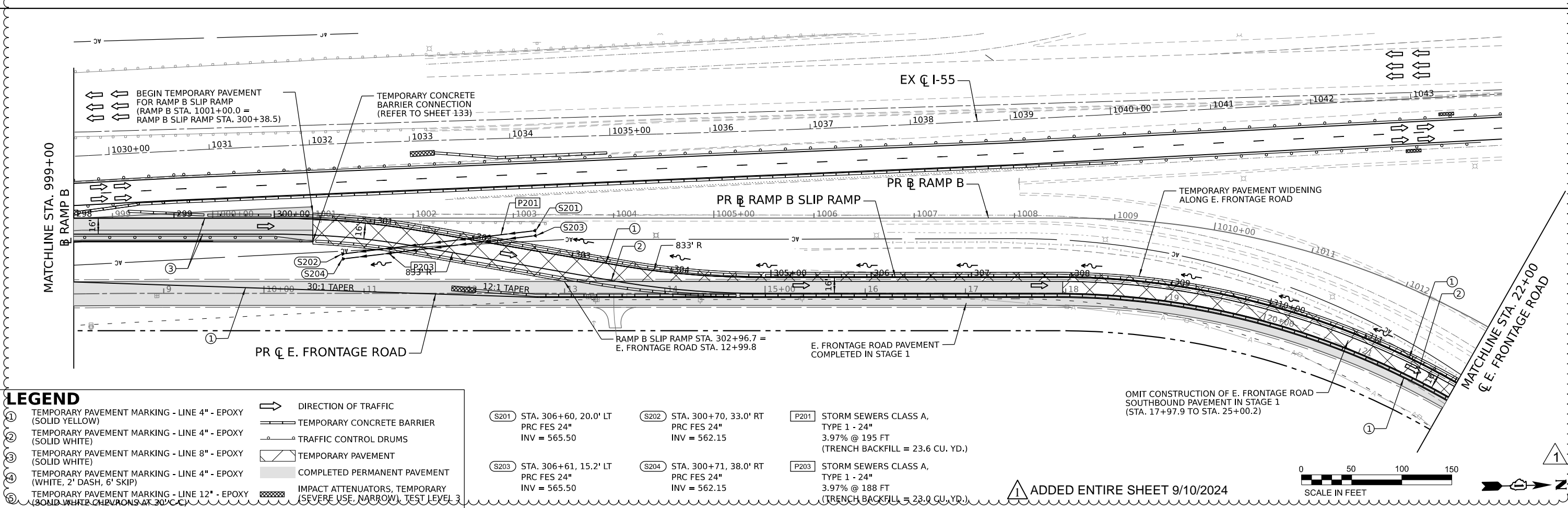
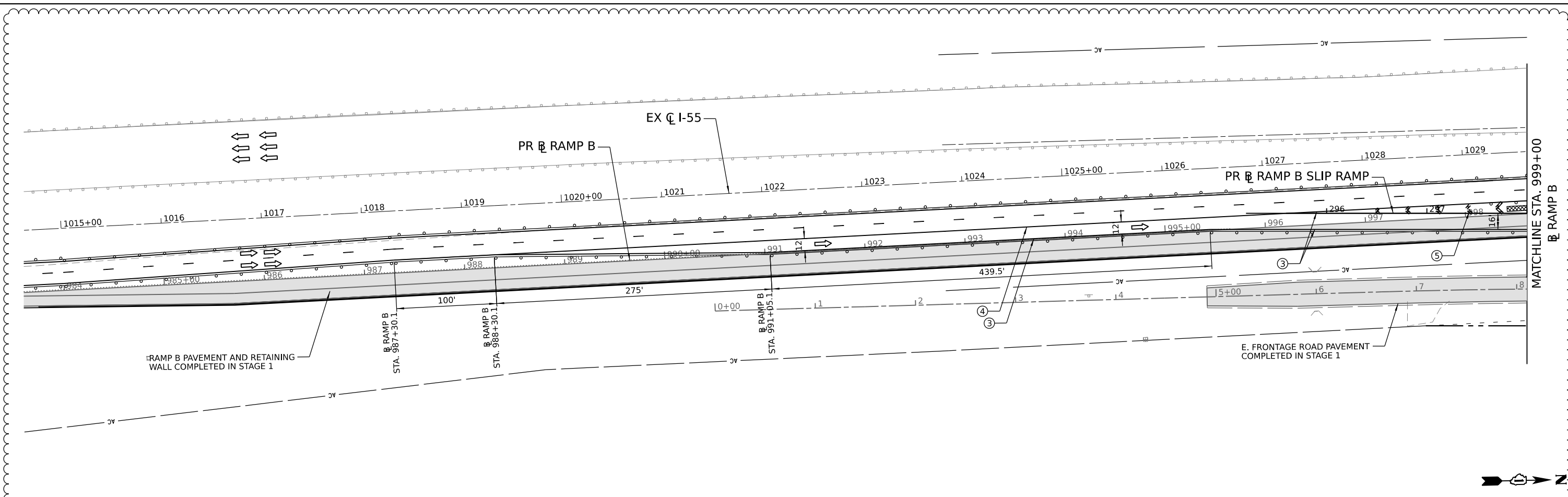
**STATE OF ILLINOIS
 DEPARTMENT OF TRANSPORTATION**

**SUGGESTED CONSTRUCTION STAGING
 TYPICAL SECTIONS – TEMPORARY RAMP B SLIP RAMP**

SCALE: SHEET OF SHEETS STA. TO STA.

F.A.I. RTE.	SECTION	COUNTY	TOTAL SHEETS	SHEET NO.
I-80	FAI 80 21 STRUCTURE 5	WILL	525	181C
CONTRACT NO. 62R26				
ILLINOIS FED. AID PROJECT				

MODEL: Default
 FILE NAME: p:\projects\transmission\paw_bentley\comtrans\scorp\paw_bentley\Documents\Projects_2018\C401180022\01-Struct\CAD\INT\02_62R26\05-Addendum\0162R26-shr-ramp-dpr-ramp01-001.dgn



LEGEND

① TEMPORARY PAVEMENT MARKING - LINE 4" - EPOXY (SOLID YELLOW)	➔ DIRECTION OF TRAFFIC
② TEMPORARY PAVEMENT MARKING - LINE 4" - EPOXY (SOLID WHITE)	▬ TEMPORARY CONCRETE BARRIER
③ TEMPORARY PAVEMENT MARKING - LINE 8" - EPOXY (SOLID WHITE)	○ TRAFFIC CONTROL DRUMS
④ TEMPORARY PAVEMENT MARKING - LINE 4" - EPOXY (WHITE, 2' DASH, 6' SKIP)	▨ TEMPORARY PAVEMENT
⑤ TEMPORARY PAVEMENT MARKING - LINE 12" - EPOXY (SOLID WHITE CHEVRONS AT 30' C/C)	▩ COMPLETED PERMANENT PAVEMENT
	▨ IMPACT ATTENUATORS, TEMPORARY SEVERE USE, NARROW, TEST LEVEL 3

(S201) STA. 306+60, 20.0' LT PRC FES 24" INV = 565.50	(S202) STA. 300+70, 33.0' RT PRC FES 24" INV = 562.15	(P201) STORM SEWERS CLASS A, TYPE 1 - 24" 3.97% @ 195 FT (TRENCH BACKFILL = 23.6 CU. YD.)
(S203) STA. 306+61, 15.2' LT PRC FES 24" INV = 565.50	(S204) STA. 300+71, 38.0' RT PRC FES 24" INV = 562.15	(P203) STORM SEWERS CLASS A, TYPE 1 - 24" 3.97% @ 188 FT (TRENCH BACKFILL = 23.0 CU. YD.)

ADDED ENTIRE SHEET 9/10/2024



USER NAME	dbook	DESIGNED	-	REVISED	-	9/6/2024
PLOT SCALE	1" = 100.000' / in.	DRAWN	-	REVISED	-	
PLOT DATE	9/6/2024	CHECKED	-	REVISED	-	
		DATE	-	REVISED	-	

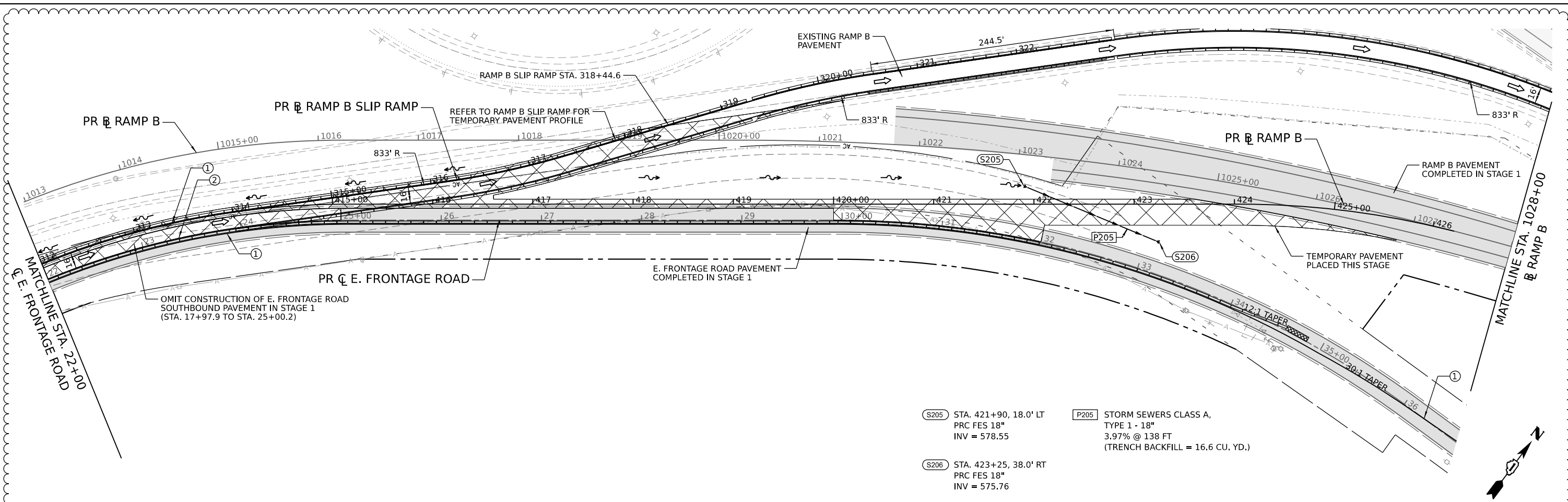
**STATE OF ILLINOIS
DEPARTMENT OF TRANSPORTATION**

**SUGGESTED CONSTRUCTION STAGING
TEMPORARY RAMP B SLIP RAMP - STAGE 2A**

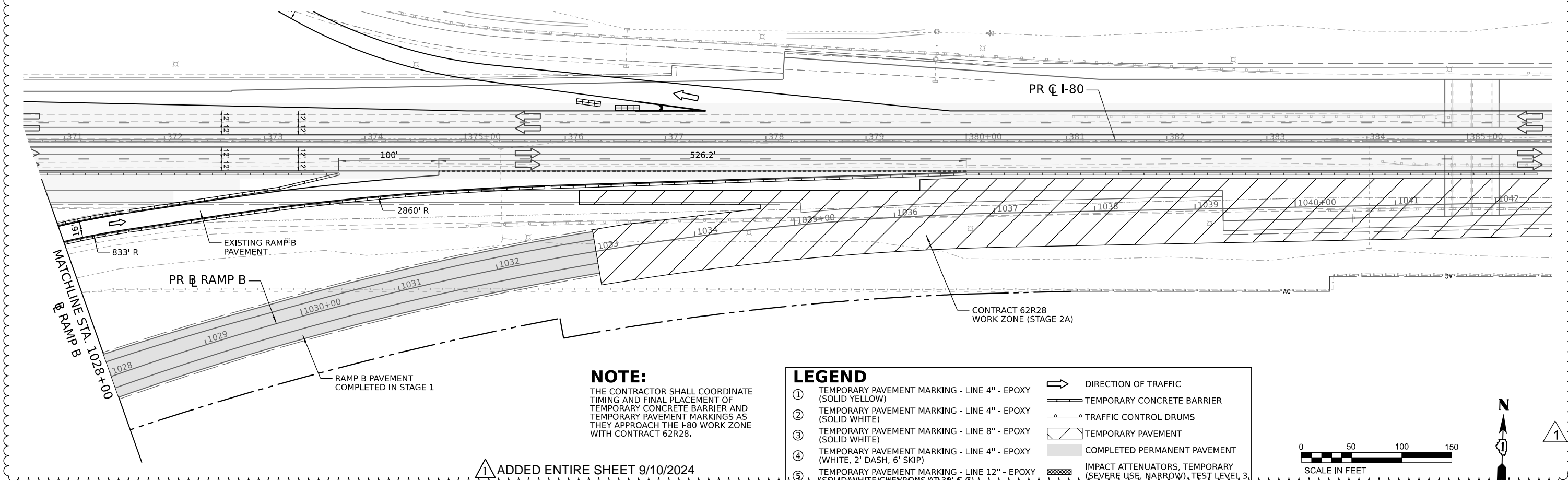
F.A.I. RTE.	SECTION	COUNTY	TOTAL SHEETS	SHEET NO.
I-80	FAI 80 21 STRUCTURE 5	WILL	525	181D
CONTRACT NO. 62R26			ILLINOIS FED. AID PROJECT	

SCALE: SHEET OF SHEETS STA. TO STA.

MODEL: I:\default...
 FILE NAME: ...
 PROJECTS: 2018\CH401180022\01-Struct\CAD\INT-02_62R26\05-Addendum\0162R26-shr-ramp-01-ramp01-002.dgn



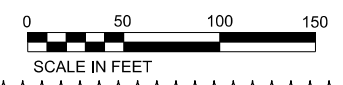
- (S205) STA. 421+90, 18.0' LT
PRC FES 18"
INV = 578.55
- (S206) STA. 423+25, 38.0' RT
PRC FES 18"
INV = 575.76
- (P205) STORM SEWERS CLASS A,
TYPE 1 - 18"
3.97% @ 138 FT
(TRENCH BACKFILL = 16.6 CU. YD.)



NOTE:
 THE CONTRACTOR SHALL COORDINATE TIMING AND FINAL PLACEMENT OF TEMPORARY CONCRETE BARRIER AND TEMPORARY PAVEMENT MARKINGS AS THEY APPROACH THE I-80 WORK ZONE WITH CONTRACT 62R28.

LEGEND

- ① TEMPORARY PAVEMENT MARKING - LINE 4" - EPOXY (SOLID YELLOW)
- ② TEMPORARY PAVEMENT MARKING - LINE 4" - EPOXY (SOLID WHITE)
- ③ TEMPORARY PAVEMENT MARKING - LINE 8" - EPOXY (SOLID WHITE)
- ④ TEMPORARY PAVEMENT MARKING - LINE 4" - EPOXY (WHITE, 2' DASH, 6' SKIP)
- ⑤ TEMPORARY PAVEMENT MARKING - LINE 12" - EPOXY (SOLID WHITE CHEVRONS AT 30' C-C)
- ➡ DIRECTION OF TRAFFIC
- ▬ TEMPORARY CONCRETE BARRIER
- TRAFFIC CONTROL DRUMS
- ▨ TEMPORARY PAVEMENT
- ▩ COMPLETED PERMANENT PAVEMENT
- ▧ IMPACT ATTENUATORS, TEMPORARY (SEVERE USE, NARROW, TEST LEVEL 3)



① ADDED ENTIRE SHEET 9/10/2024



USER NAME	dbook	DESIGNED	-	REVISED	-	9/6/2024
DRAWN	-	REVIS	-	REVIS	-	
PLOT SCALE	100,000' / in.	CHECKED	-	REVIS	-	
PLOT DATE	9/6/2024	DATE	-	REVIS	-	

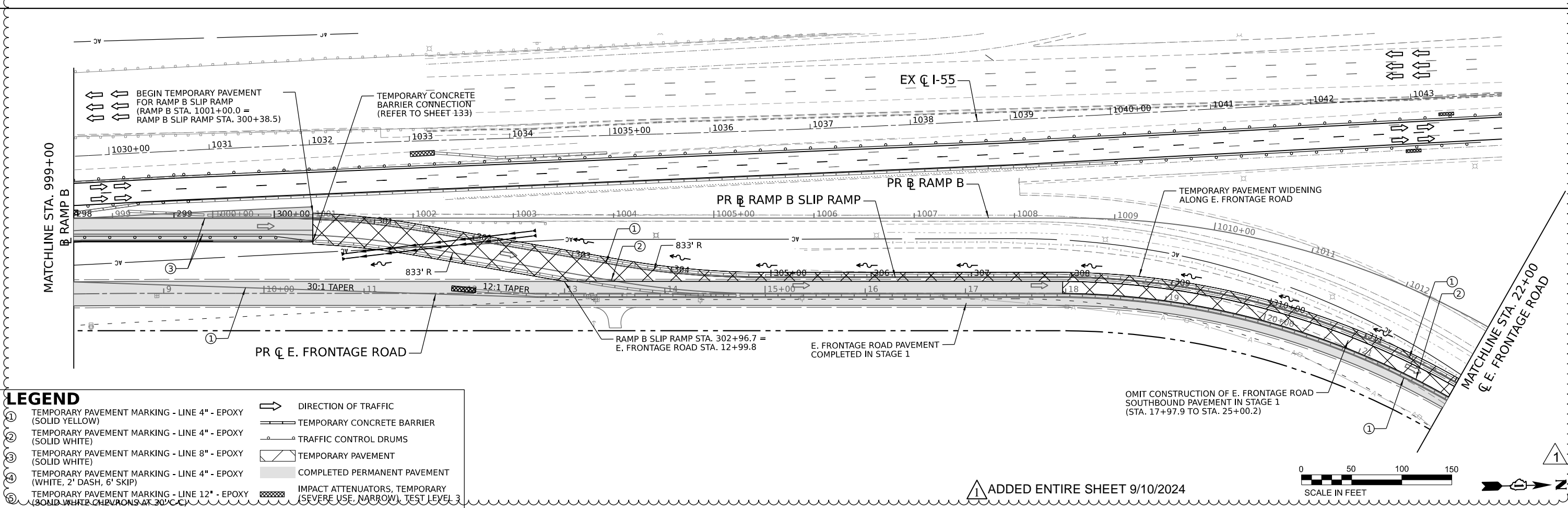
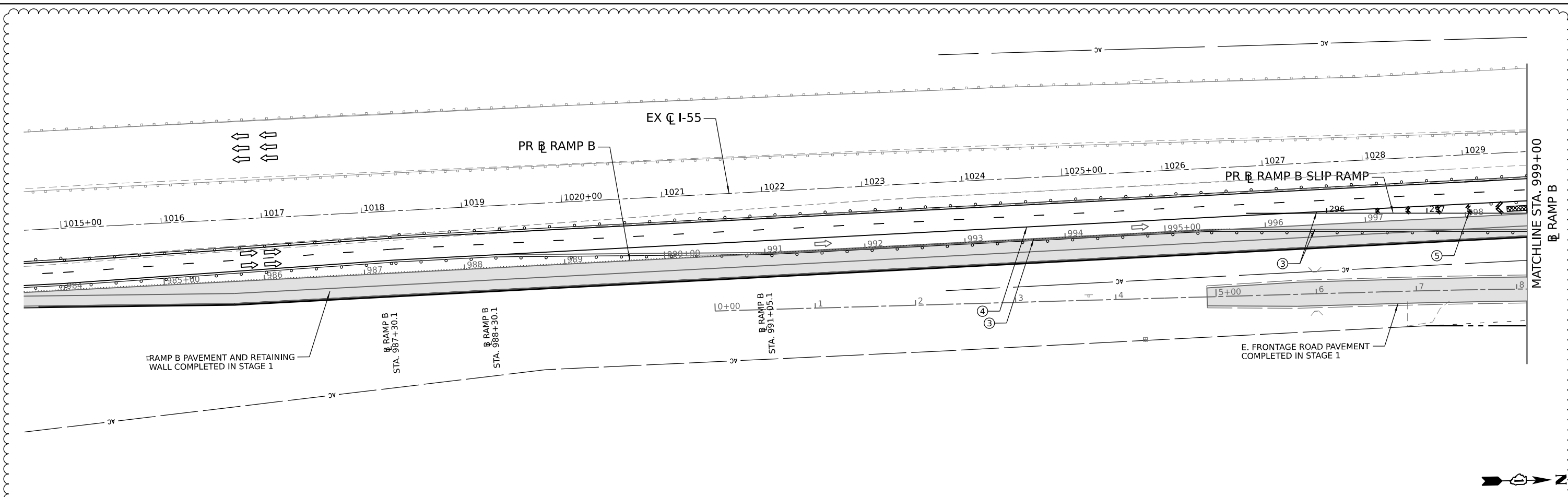
**STATE OF ILLINOIS
 DEPARTMENT OF TRANSPORTATION**

**SUGGESTED CONSTRUCTION STAGING
 TEMPORARY RAMP B SLIP RAMP - STAGE 2A**

SCALE: SHEET OF SHEETS STA. TO STA.

F.A.I. RTE.	SECTION	COUNTY	TOTAL SHEETS	SHEET NO.
I-80	FAI 80 21 STRUCTURE 5	WILL	525	181E
CONTRACT NO. 62R26			ILLINOIS FED. AID PROJECT	

MODEL: Default
 FILE NAME: p:\projects\transystem\paw_bentley\comatransys\scorp\paw_bentley\Documents\Projects_2018\C401180022\01-Struct\CAD\INT\02_62R26\05-Addendum\0162R26-shc-ramp-21-ramp02-001.dgn



LEGEND

①	TEMPORARY PAVEMENT MARKING - LINE 4" - EPOXY (SOLID YELLOW)	➔	DIRECTION OF TRAFFIC
②	TEMPORARY PAVEMENT MARKING - LINE 4" - EPOXY (SOLID WHITE)	▬	TEMPORARY CONCRETE BARRIER
③	TEMPORARY PAVEMENT MARKING - LINE 8" - EPOXY (SOLID WHITE)	○	TRAFFIC CONTROL DRUMS
④	TEMPORARY PAVEMENT MARKING - LINE 4" - EPOXY (WHITE, 2' DASH, 6' SKIP)	▨	TEMPORARY PAVEMENT
⑤	TEMPORARY PAVEMENT MARKING - LINE 12" - EPOXY (SOLID WHITE CHEVRONS AT 30' C/C)	▩	COMPLETED PERMANENT PAVEMENT
		▨	IMPACT ATTENUATORS, TEMPORARY SEVERE USE, NARROW, TEST LEVEL 3

① ADDED ENTIRE SHEET 9/10/2024



USER NAME	dbook	DESIGNED	-	REVISED	-	9/6/2024
PLOT SCALE	100,000' / in.	DRAWN	-	REVISED	-	
PLOT DATE	9/6/2024	CHECKED	-	REVISED	-	
		DATE	-	REVISED	-	

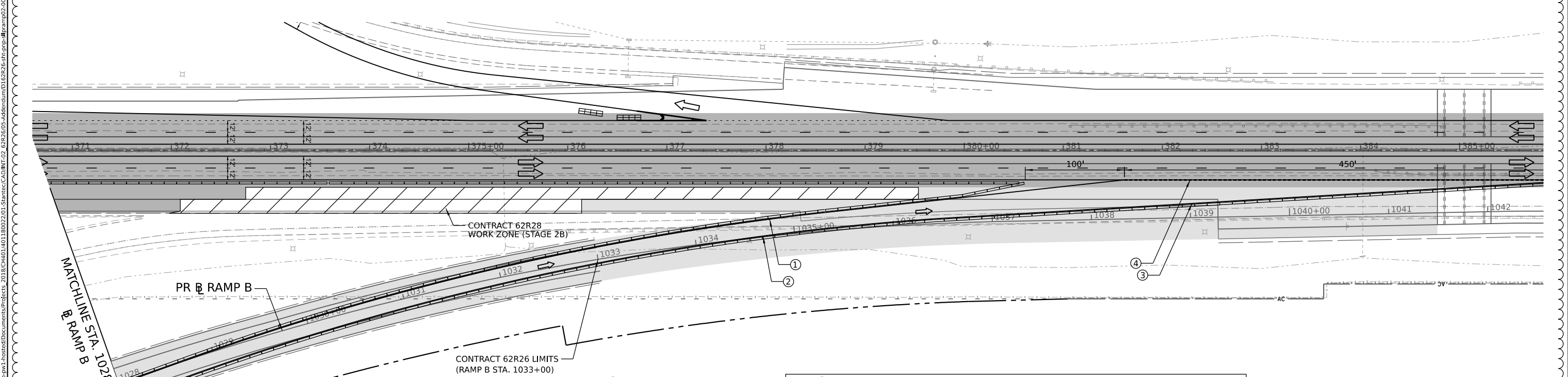
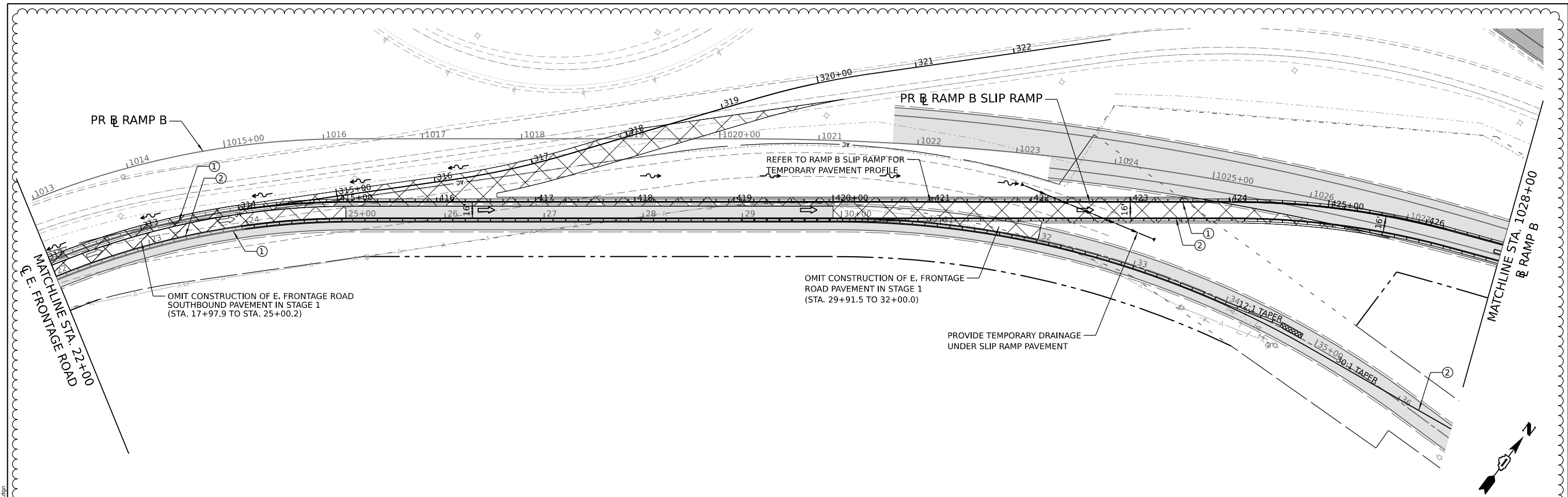
STATE OF ILLINOIS
DEPARTMENT OF TRANSPORTATION

SUGGESTED CONSTRUCTION STAGING
TEMPORARY RAMP B SLIP RAMP - STAGE 2B

SCALE:	SHEET	OF	SHEETS	STA.	TO	STA.
--------	-------	----	--------	------	----	------

F.A.I. RTE.	SECTION	COUNTY	TOTAL SHEETS	SHEET NO.
I-80	FAI 80 21 STRUCTURE 5	WILL	525	181F
CONTRACT NO. 62R26			ILLINOIS FED. AID PROJECT	

MODEL: Default
 FILE NAME: p:\projects\transystem-pw-bentley.com\transys\corp\pw1\hosted\Documents\Projects_2018\CH401\401180022\01-Stantec\CAD\INT\02_62R26\05-Addendum\0162R26-shr-ramp-02.dgn
 PROJECT: 2018\CH401\401180022\01-Stantec\CAD\INT\02_62R26\05-Addendum\0162R26-shr-ramp-02.dgn



NOTE:
 THE CONTRACTOR SHALL COORDINATE TIMING AND FINAL PLACEMENT OF TEMPORARY CONCRETE BARRIER AND TEMPORARY PAVEMENT MARKINGS AS THEY APPROACH THE I-80 WORK ZONE WITH CONTRACT 62R28.

LEGEND

①	TEMPORARY PAVEMENT MARKING - LINE 4" - EPOXY (SOLID YELLOW)	➔	DIRECTION OF TRAFFIC
②	TEMPORARY PAVEMENT MARKING - LINE 4" - EPOXY (SOLID WHITE)	▬	TEMPORARY CONCRETE BARRIER
③	TEMPORARY PAVEMENT MARKING - LINE 8" - EPOXY (SOLID WHITE)	○	TRAFFIC CONTROL DRUMS
④	TEMPORARY PAVEMENT MARKING - LINE 4" - EPOXY (WHITE, 2' DASH, 6' SKIP)	▨	TEMPORARY PAVEMENT
⑤	TEMPORARY PAVEMENT MARKING - LINE 12" - EPOXY (SOLID WHITE CHEVRONS AT 30' C/C)	■	COMPLETED PERMANENT PAVEMENT
		▩	IMPACT ATTENUATORS, TEMPORARY (SEVERE USE, NARROW, TEST LEVEL 3)



ADDED ENTIRE SHEET 9/10/2024



USER NAME	dbook	DESIGNED	-	REVISED	-	9/6/2024
PLOT SCALE	100.000' / in.	DRAWN	-	REVISED	-	
PLOT DATE	9/6/2024	CHECKED	-	REVISED	-	
		DATE	-	REVISED	-	

STATE OF ILLINOIS
DEPARTMENT OF TRANSPORTATION

SUGGESTED CONSTRUCTION STAGING
TEMPORARY RAMP B SLIP RAMP - STAGE 2B

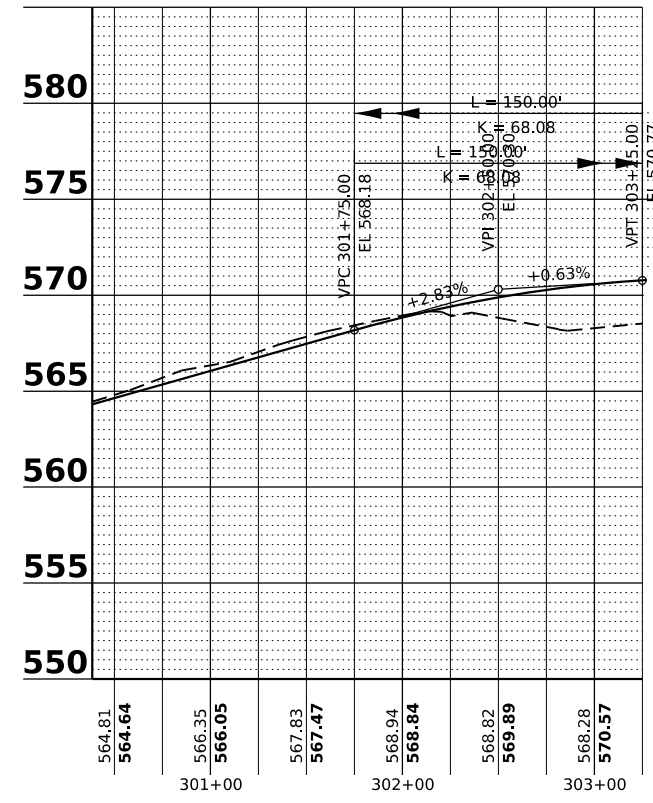
SCALE: SHEET OF SHEETS STA. TO STA.

F.A.I. RTE.	SECTION	COUNTY	TOTAL SHEETS	SHEET NO.
I-80	FAI 80 21 STRUCTURE 5	WILL	525	181G
				CONTRACT NO. 62R26
		ILLINOIS	FED. AID PROJECT	



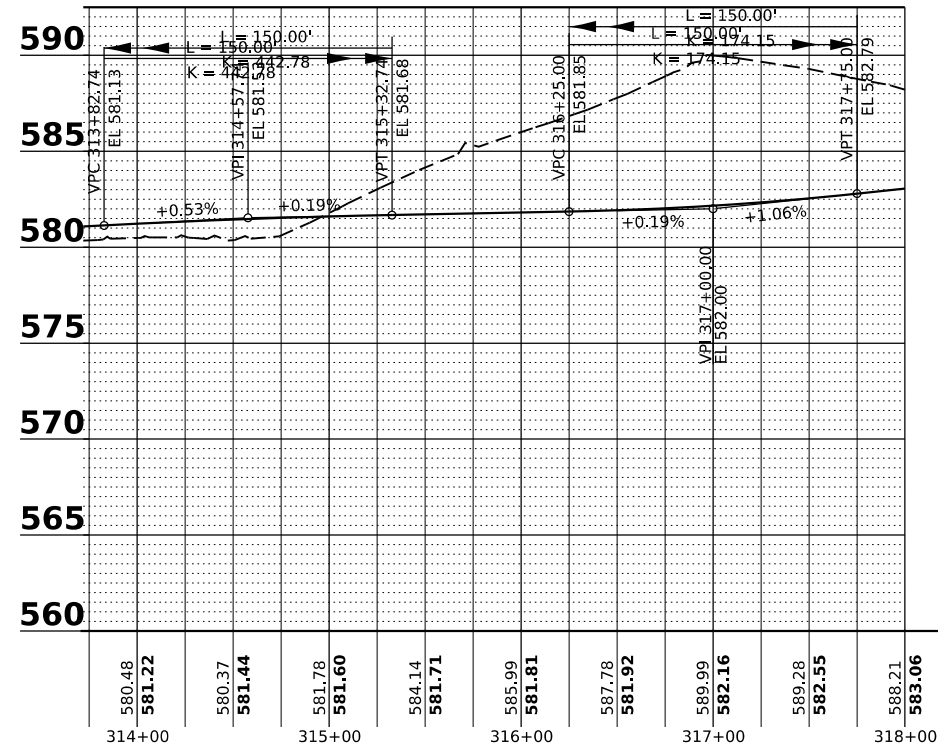
1

MODEL: D:\default...
 FILE NAME: p:\projects\systems\pwr\kentley.com\transys\corp\pwr\hatched\Documents\Projects_2018\C401\401180022\01-5hntcc\CAD\INT-02_6326\05-Addendum\016326-shr-prof-slipramp-001.dgn



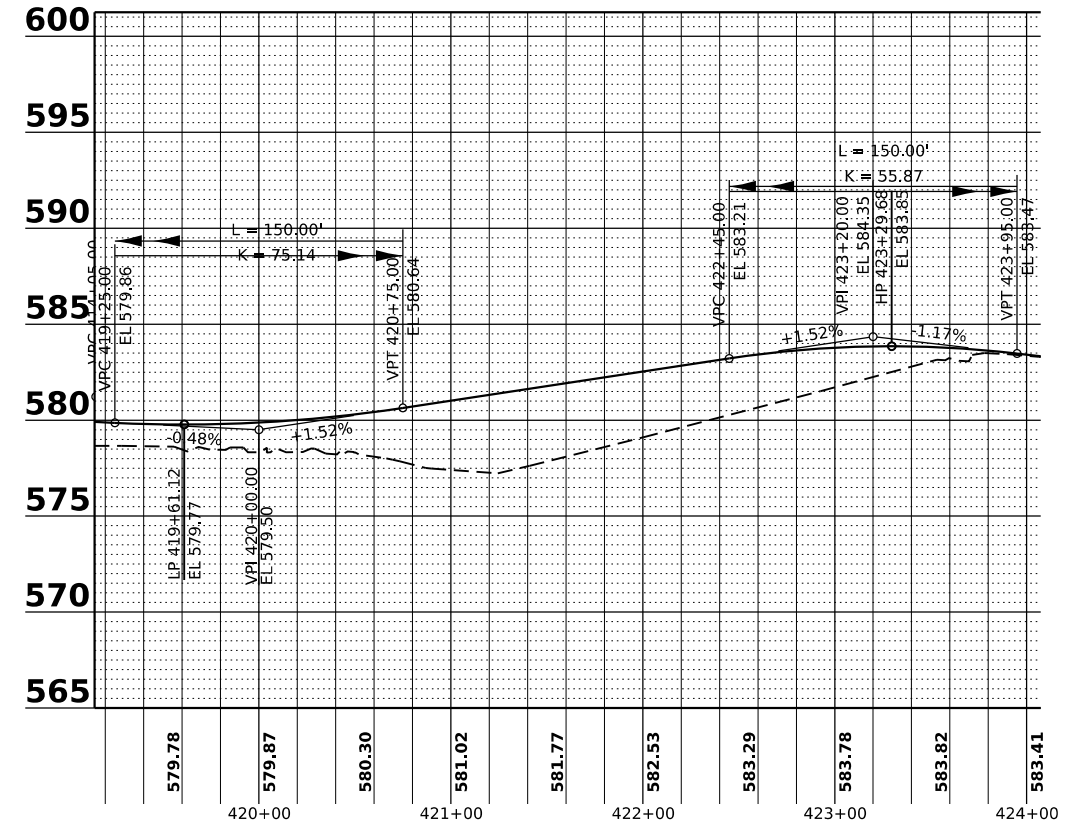
PROPOSED RAMP B SLIP RAMP PROFILE

PR B RAMP B SLIP RAMP: STA. 300+38.5 TO STA. 302+96.7



PROPOSED RAMP B SLIP RAMP PROFILE

PR B RAMP B SLIP RAMP: STA. 313+82.7 TO STA. 318+00.0



PROPOSED RAMP B SLIP RAMP PROFILE

PR B RAMP B SLIP RAMP: STA. 419+25.0 TO STA. 423+95.0

ADDED ENTIRE SHEET 9/10/2024



USER NAME = dbook	DESIGNED -	REVISED - 9/6/2024
PLOT SCALE = 100,000' / in.	DRAWN -	REVISED -
PLOT DATE = 9/6/2024	CHECKED -	REVISED -
	DATE -	REVISED -

STATE OF ILLINOIS
DEPARTMENT OF TRANSPORTATION

**SUGGESTED CONSTRUCTION STAGING
TEMPORARY RAMP B SLIP RAMP PROFILES**

SCALE: SHEET OF SHEETS STA. TO STA.

F.A.I. RTE.	SECTION	COUNTY	TOTAL SHEETS	SHEET NO.
I-80	FAI 80 21 STRUCTURE 5	WILL	525	181H
ILLINOIS FED. AID PROJECT			CONTRACT NO. 62R26	